

DRAKE SQUARE LED FLUSH MOUNT

SKU# 12059L, 12060L

Rated Voltage 200-240V~ 50Hz

Thank you for purchasing this quality GE product. To ensure correct function and safety, please read and follow all instructions carefully before using the product. Please keep instructions for future reference.

Warranty

- This fitting is covered by a 3 year warranty. The warranty is from date of purchase, not the date of installation.
- If the fitting is not installed by a licensed electrician it will void the warranty.
- Please retain proof of purchase and evidence of installation by a licensed electrician for any warranty enquiries.
- Warranty will be void if the fitting is used on the same circuit which has a dimmer switch.
- Failure to comply with the instructions in this manual may increase the risk of damage or injury and will void warranty.

Installation requirements

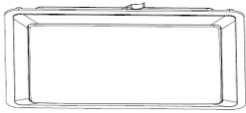
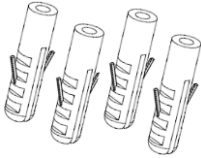
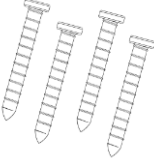
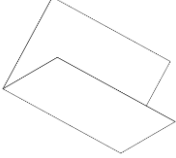
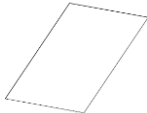
- Must be installed by a licensed electrician.
- All wiring and installation of the light fitting must adhere to local and national wiring rules.
eg. AS/NZS 3000:2007/Amendment 2:2012 Electrical installations.
- Select a suitable location for installation:
 - This product is suitable for indoor use only.
 - The mounting point must support 2 times the weight of the fitting.
 - Ensure the fitting is not installed next to any air vent system.
 - When installing a fitting in an area prone to moisture, ensure that the area is well ventilated and an appropriately rated exhaust fan is used if required. Damage or corrosion caused by moisture is not a product fault, and as such is not covered under warranty.
- Take care not to pull any electrical wires during unpacking as this may damage the connection.
- Lay out all the components on a smooth surface and make sure there are no components missing before assembling. If parts are missing, return the complete product to the place of purchase for inspection or replacement.
- Check whether the fitting has been damaged during transport. Do not operate/install any product which appears damaged in any way. Return the complete product to the place of purchase for inspection, repair or replacement.
- Ensure power to the circuit you are working on has been switched OFF before commencing any electrical work.



- **CAUTION: risk of electric shock** . The light source of this luminaire is not replaceable; when the light source reaches its end of life the whole luminaire shall be replaced.



Installation Instructions

Part list

				
Whole fitting	Plastic anchor X 4	Mounting screw X 4	Instruction manual	Warranty card

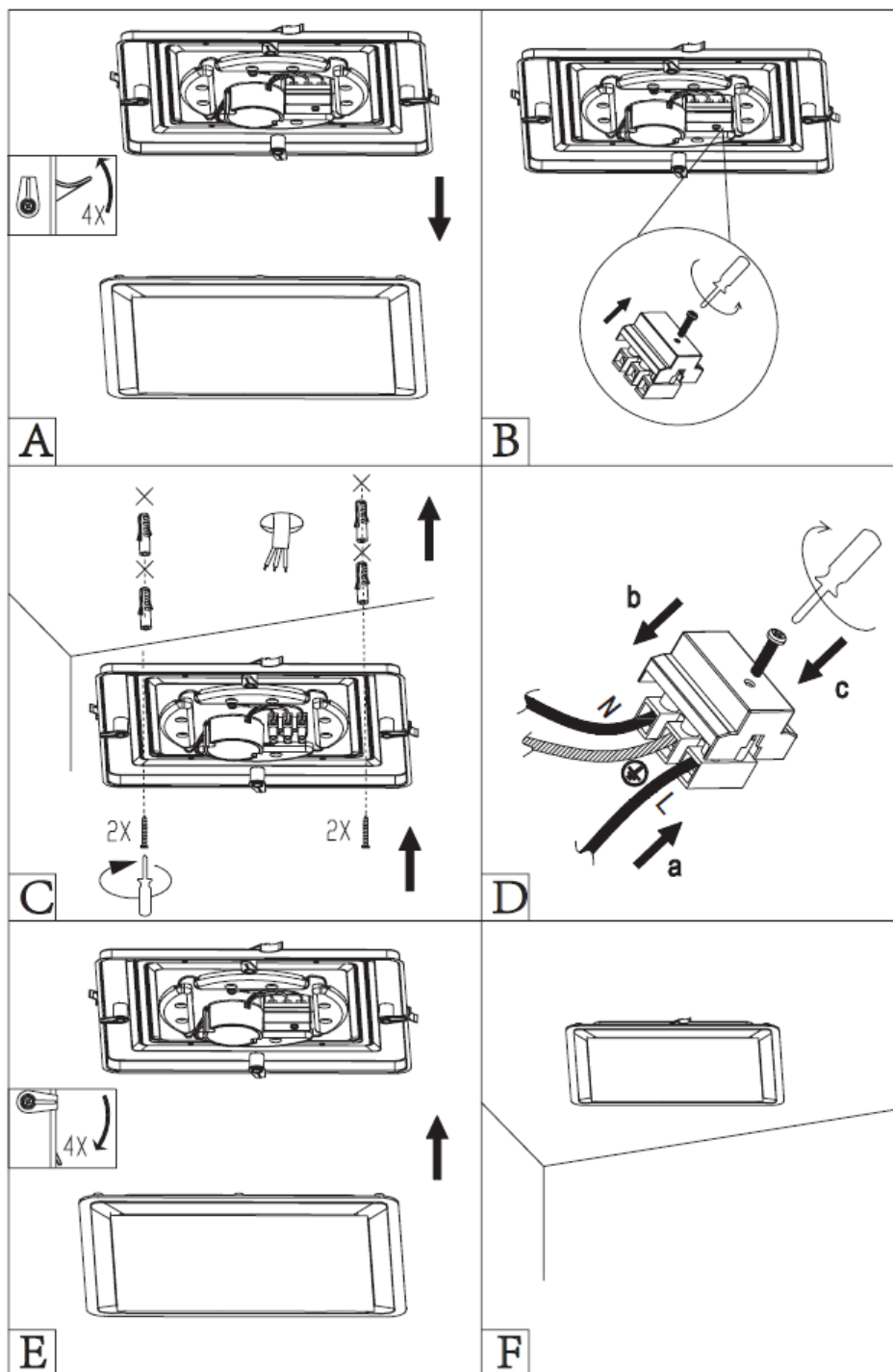
Installation directions

1. Remove all packaging material from the product and be careful not to throw away accessories that may be hidden within the packaging material.
2. Remove the shade from the fitting by pulling 4 brackets out. Fig. A
3. Remove the terminal block cover by loosening the screw. Fig. B
4. Use the fitting as a template to mark the screw positions onto the ceiling.
5. Install the fitting onto the ceiling by using appropriately sized mounting screws and anchors. Fig. C
Ensure the mounting screws and anchors used are suitable for the mounting surface.
6. Connect the mains supply wire to the terminal block. Fig. D

Mains Supply Wire	Fitting Wire	
Neutral – Blue or Black	Blue	(N)
Earth – Yellow/Green 	Yellow/Green	
Live – Brown or Red	Brown	(L)

Ensure that the wires are secure and no bare wires are exposed. Install the cover back over the terminal block.
7. Reinstall the shade back to fitting. Fig. E
8. Turn ON the power to the fitting.

Installation Instructions



Safety tips

- Always ensure the power is OFF and the fitting has cooled down before performing any maintenance, cleaning or adjustment to the fitting.
- To avoid injury or damage to the fitting, ensure that power leads and screws are secure before connecting the power.
- Ensure that the fitting does not come in contact with corrosive chemicals, etc.
- To clean, wipe with a damp clean cloth. Never soak the fitting with water.

Specifications

SKU #	12059L	12060L
Colour	White	
Insulation Class	Class I	
Rated Voltage	200-240V~ 50Hz	
Rated Wattage	12W	
LED Specs	GuangPu LEDs, 3000K,820lm	GuangPu LEDs, 4000K, 850lm
Weight	0.69kg	
Dimensions	L:335mm W:335mm H: 85mm	

GE is a trademark of General Electric Company and is under license by Light Source Solutions of 140 Fulton Drive Derrimut Vic 3030 Australia