

ELROSE

SKU# 099065, 099066, 099067, 099068

Thank you for purchasing this quality Lucci product. To ensure correct function and safety, please read and follow all instructions carefully before assembly, installation and use of this product. Please keep instructions for future reference.

Warranty

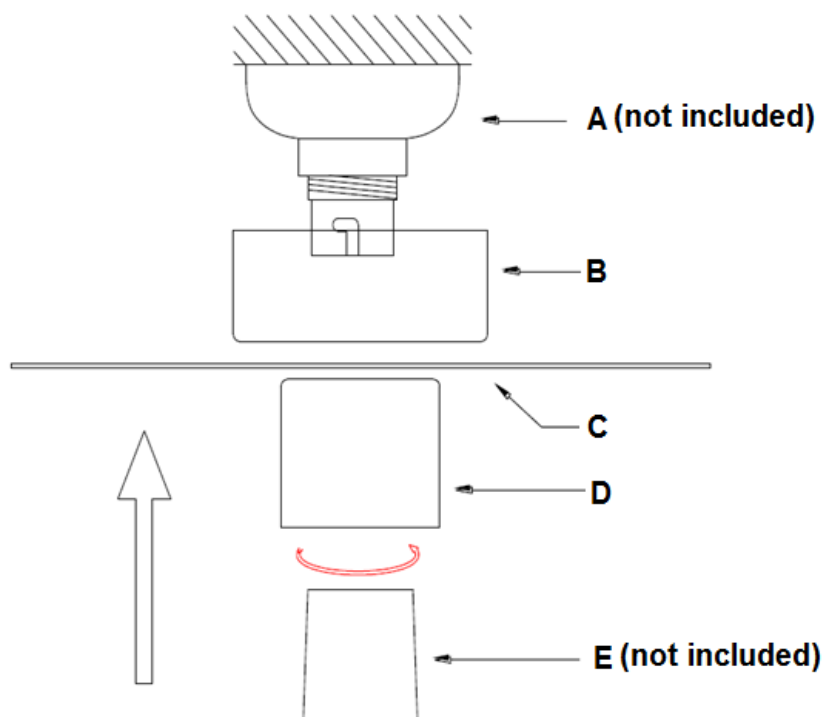
- This fitting is covered by a 12 month warranty. The warranty is from date of purchase, not the date of installation. Please retain proof of purchase.
- Warranty will be void if there is any damage due to improper usage or modification to the fitting.
- Failure to comply with the instructions in this manual may increase the risk of damage or injury and will void warranty.

Installation requirements

- This fitting is a DIY (Do It Yourself) product, no electrical wiring connection or disconnection is required.
- This fitting can only be installed to an existing batten holder (not included). Ensure the existing batten holder is in good working condition and the plastic has not become cracked or brittle.
- This product is suitable for indoor use only.
- Do not exceed the maximum globe wattage rating.
- Lay out all the components on a smooth surface and make sure there are no components missing before assembling. If parts are missing, return the complete product to the place of purchase for inspection or replacement.
- Check whether the fitting has been damaged during transport. Do not operate/install any product which appears damaged in any way. Return the complete product to the place of purchase for inspection, repair or replacement.
- Ensure power to the batten holder you are working on has been switched OFF before commencing the installation. Only turn the power back on after it is fully assembled with the globe installed and is ready for use for the first time.

Installation directions

1. Remove all packaging material from the product and be careful not to throw away accessories that may be hidden within the packaging material.
2. Remove the skirt (E – not included) from the existing batten holder (A – not included) on your ceiling.
3. Attach the batten holder cover (B), decorative plate (C), lamp holder cover (D) onto the batten holder (A – not included) and secure with the skirt (E – not included). Ensure that the skirt and all parts are attached securely.
4. Install globes (not included) into the lamp holder. Do not exceed the maximum wattage rating.
5. After the installation, switch on the fitting to test and enjoy your new lighting product.



Safety tips

- Always ensure the power is OFF and the fitting has cooled down before performing any maintenance, cleaning, changing the globe or adjustment to the fitting.
- Handle the fitting and/or shade with care to avoid any damage or breakage.
- Ensure that the fitting does not come in contact with corrosive chemicals, etc.
- To clean, wipe with a damp clean cloth. Never soak the fitting with water.

Specifications

SKU #	099065	099066	099067	099068
Colour	Matte Black	Brushed Brass	Brushed Copper	Chrome
Rated Wattage	Max.45W (When use with this DIY fitting)			
Lamp Holder	Installation to an existing batten holder (not included)			
Weight	0.39kg			
Dimensions	H:72mm Dia:220mm			