

MFL HARLO 1 LIGHT CCT TRACK SPOT

SKU# 149060, 149061.

Rated Voltage 220-240V~ 50Hz

To ensure correct function and safety, please read and follow all instructions carefully before assembly, installation and use of this luminaire. Please keep instructions for future reference.

NOTE: This installation instruction applies to the luminaire only.

The Lucci track systems and lamp are sold separately.

When working with 240V, a licensed electrician is required.

Warranty

- This luminaire is covered by a 5-year warranty valid for in-store replacement or refund only.
- The warranty period starts from the date of purchase, not the date of installation.
- Please retain the proof of purchase for any warranty enquiries.
- The warranty will be void if there is any damage due to improper usage or modification to the luminaire.
- The warranty is subject to the luminaire being used with a Lucci track system (sold separately).
- Failure to comply with the instructions in this manual may increase the risk of damage or injury and will void the warranty.

Installation Requirements

- The installation location must have a Lucci track (sold separately) pre-installed on the ceiling.
If you do not have an existing Lucci track (sold separately) pre-installed on the ceiling, please contact a licensed electrician for installation.
- This luminaire is recommended to be used with the Lucci track II system (SKU# 149052, 149053, 149054, 149055).
This luminaire is also compatible with Lucci track I system (SKU# 140020, 140022, 140057, 140058).
- Select a suitable location for installation:
 - This luminaire is suitable for indoor use only.
 - The mounting point must support 2 times the weight of the luminaire.
 - Ensure the luminaire is not installed in direct line of an air vent/system.
 - If installing a luminaire in an area prone to moisture, ensure that the area is well ventilated, and an appropriately rated exhaust fan is used if required. Damage or corrosion caused by moisture is not a product fault, and as such is not covered under warranty.
- The colour shifting function is designed to operate with a mechanical or relay ON/OFF switch, as well as selected semi-conductor ON/OFF switches, such as MFL Artisan or Lucci Power Dimmers with ON/OFF functionality.

NOTE: The colour shifting function may not operate correctly on all semi-conductor switches.

- The use of a LED dimmer is strongly recommended. Please see Highly Recommended Dimmers section of the Specifications on Page 4 for a list of SKUs that have been specifically designed & tested for use with this luminaire.

NOTE: Dimming may cause buzzing sounds or a slight flicker. There may be slight delays with the LED light start up or slight uneven light performance when more than one LED luminaire is linked together, switched ON or dimmed. This is not a product fault and as such is not covered under warranty.

NOTE: Some dimmers have a minimum load of 20W. Ensure the dimmer position is on the maximum setting before turning on the LED luminaire and adjust the dimmer down to your desired light level.

NOTE: Testing cannot account for installation variables such as variation in mains supply voltage, cable capacitance, electrical noise, transients, surges and ripple control signals (commonly found in NSW & QLD).

NOTE: The information provided is correct to the best of Beacon Lighting's knowledge at the date of publication.

- Take care not to pull any electrical wires during unpacking as this may damage the connection.
- Lay out all the components on a smooth surface and make sure no components are missing before assembling. If parts are missing, return the complete product to the place of purchase for inspection or replacement.
- Check whether the luminaire has been damaged during transport. Do not operate/install any product which appears damaged in any way. Return the complete product to the place of purchase for inspection, repair or replacement.

Installation Directions

WARNING: Ensure power to the circuit you are working on has been switched OFF before commencing the installation.

1. Remove all packaging material from the product and be careful not to throw away accessories that may be hidden within the packaging material.

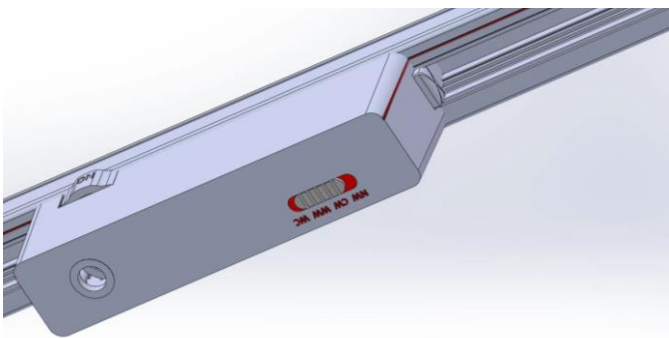
NOTE: The installation location must have a Lucci track (sold separately) pre-installed on the ceiling.
If you do not have an existing Lucci track (sold separately) pre-installed on the ceiling, please contact a licensed electrician for installation.

2. The colour temperature of this luminaire can be pre-set OR operated via the connected wall light switch;
To pre-set the colour temperature, select the colour temperature via the switch on the back of the luminaire head.
OR

Select WC (Wall Control) on the luminaire to switch the colour temperature via the connected wall light switch.

NOTE: The luminaire must be turned off before using the switch to change the colour temperature OR selecting WC (Wall Control).

3. Look at the track adaptor and locate the side with the groove on the housing.
Look at the Lucci track (sold separately) and locate the side which has the groove.
Align the groove on the track adaptor with the groove on the Lucci track (sold separately) to ensure the luminaire is inserted in the correct direction. (refer to the picture below)



4. Check and ensure the lock on the track adaptor is in the "OFF" position. (Fig. A-3).
5. Push and hold down on the locking clip (Fig. A-1).
Insert the luminaire into the Lucci track (sold separately). (Fig. A-2).
Secure the luminaire by twisting the lock on the track adaptor to the "ON" position. (Fig. A-3)
6. Hold onto the track adapter and adjust the head to your desired angle.
The maximum angle of adjustment for the head is 90° and the maximum angle of rotation is 350° (Fig. B)

NOTE: DO NOT adjust the head up or down more than 90° and DO NOT rotate the head more than 350°.
As this may damage the knuckle joint and the internal wires.

7. After the installation, switch on the luminaire to test and enjoy your new lighting product.

COLOUR SWITCHING VIA THE WALL LIGHT SWITCH (3000K - 5000K - 4000K):

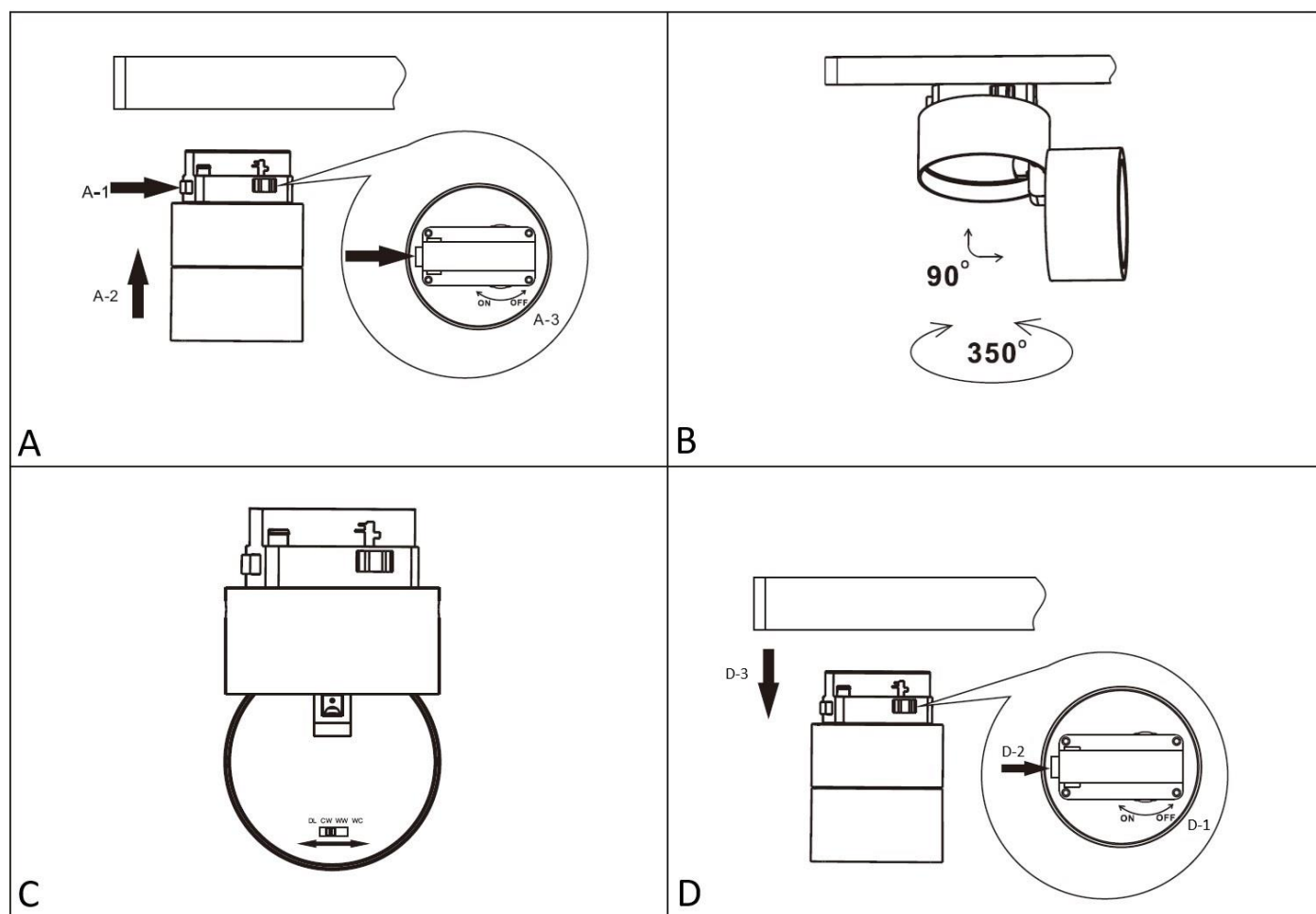
NOTE: If the luminaire is installed with a dimmer, it is recommended to turn the dimmer to the highest position before adjusting the colour temperature via the wall light switch.

- To operate the colour shifting function, use the connected mechanical or relay ON/OFF wall light switch.

NOTE: The switch on the LED driver must be at the WC (Wall Control) position. (Fig. C)

- While the luminaire is on, toggle the wall light switch OFF and ON again within 3 seconds.
The colour shifting sequence will jump from 3000K – 5000K – 4000K.
- For the colour shifting to memorise the colour temperature, leave the wall switch OFF for over 7 seconds.
- To reset the colour temperature, toggle the wall switch OFF and ON twice within 1 second. Repeat if it doesn't reset.

NOTE: If using an MFL Artisan or Lucci Power Dimmer, please see the Dimmer Installation Manual for instructions on how to operate the colour shifting functions correctly.



Safety Tips

- Always ensure the power is OFF and the luminaire has cooled down before performing any maintenance, cleaning or making any adjustment to the luminaire.
- To avoid injury or damage to the luminaire, ensure that power leads and screws are secure before connecting the power.
- The light source contained in this luminaire shall only be replaced by the manufacturer or his service agent or similar qualified person.
- There are no user serviceable parts, do not attempt to dismantle or open the luminaire.
- Select a suitable location away from liquids and hazards.
- To clean, wipe with a soft damp cloth. Do NOT soak or immerse the luminaire in water or other liquids.
- Ensure that the luminaire does not come in contact with corrosive chemicals/solvents or abrasive cleaners etc.

Specifications

SKU #	147060	147061
Colour	White	Black
Rated Voltage	220-240V~ 50Hz	
Rated Wattage	12W Max.	
LED Specs	Colour switching LEDs*, Dimmable, CRI>90	
Rated Lumens	3000K – 750 lumens 4000K – 850 lumens 5000K – 850 lumens	
Highly Recommended Dimmers	Lucci Power: SKU# 290989, 290992, 290993, 290994. MFL Artisan: SKU# 197015, 197016, 197017, 197018. Lucci LEDlux: SKU# 290997. Buster + Punch: DIM-002.	
Compatible Dimmers	Clipsal: 31E2RUDM, 32E450UDM. HPM: Cat. 400T.	
Weight	0.4kg	
Dimensions	H:130mm Dia:100mm	

* The colour shifting function is designed to operate with a mechanical or relay ON/OFF switch, as well as selected semi-conductor ON/OFF switches, such as MFL Artisan or Lucci Power Dimmers with ON/OFF functionality.

NOTE: The colour shifting function may not operate correctly on all semi-conductor switches.