

MFL RAIL LIVE JOINER

SKU# 147092

Rated Voltage 48V

To ensure correct function and safety, please read and follow all instructions carefully before assembly, installation and use of this product. Please keep instructions for future reference.

NOTE: This installation instruction applies to this joiner accessory only, not the track system.

The MFL Rail track and luminaires are sold separately.

When working with 240V, a licensed electrician is required.

Warranty

- This product is covered by a 12-month warranty valid for in-store replacement or refund only.
- The warranty period starts from the date of purchase, not the date of installation.
- Please retain proof of purchase for any warranty enquiries.
- Warranty will be void if there is any damage due to improper usage or modification to the product.
- Failure to comply with the instructions in this manual may increase the risk of damage or injury and will void the warranty.

Installation Requirements

- All wiring and installation of this product must adhere to the latest local and national wiring rules. e.g. AS/NZS 3000 Electrical Installations. If unsure, please contact a licensed electrician.

NOTE: When working with 240V, a licensed electrician is required

- Do not exceed the maximum rated current.
- Select a suitable location for installation:
 - This product is suitable for indoor use only.
 - The mounting point must support 2 times the weight of the track system and any attached luminaires.
 - The maximum mechanical loading for the track system, inclusive of the weight of luminaires and accessories is 2.5kg. Do not exceed this weight.
 - The track system is unsuitable for the connection of inductive loads.
 - It is the user's responsibility to ensure electrical, mechanical and thermal compatibility between the track system and luminaires attached to it.
- Take care not to pull any electrical wires during unpacking as this may damage the connection.
- Lay out all the components on a smooth surface and make sure no components are missing before assembling. If parts are missing, return the complete product to the place of purchase for inspection or replacement.
- Check whether the product has been damaged during transport. Do not operate/install any product which appears damaged in any way. Return the complete product to the place of purchase for inspection, repair or replacement.

Installation Directions

WARNING: Ensure power to the circuit you are working on has been switched OFF before commencing the installation or any electrical work.

1. Remove all packaging material from the product and remove the cap from the joiner.
2. Place the joiner in the middle of the 2 MFL Rail tracks (sold separately).

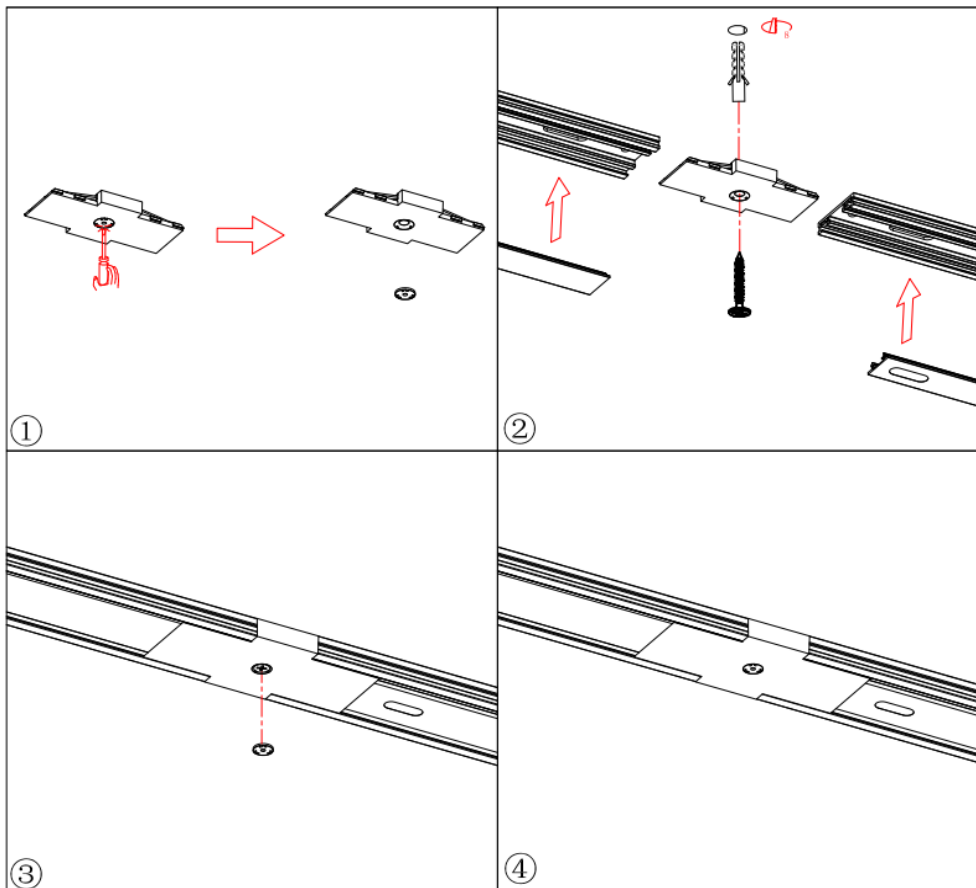
NOTE: This joiner accessory is only compatible with the MFL Rail track system.

3. Connect both the MFL Rail tracks (sold separately) together with the joiner.
4. Ensure both the MFL Rail tracks (sold separately) are secure with the joiner.
5. Mark the screw hole position of the joiner onto the mounting surface.
6. If required, drill the screw hole first.

Install the joiner onto the mounting surface using appropriately sized mounting screws and anchors.

Ensure the screws and anchors used are suitable for the mounting surface and the surrounding environment.

7. Install the magnetic strip back onto the MFL rail tracks (sold separately) and install the screw through the joiner.
8. Install the cap back onto the joiner to cover the screw.
9. After the installation is complete, install a luminaire (sold separately) to test and ensure the track system is working.



Safety Tips

- Always ensure the power is OFF and the product has cooled down before performing any maintenance, cleaning or making any adjustments.
- To avoid injury or damage to the product, ensure that power leads and screws are secure before connecting the power.
- To clean, wipe with a soft damp cloth. Do NOT soak or immerse the product in water or other liquids.
- Ensure that the product does not come in contact with corrosive chemicals/solvents or abrasive cleaners etc.

Specifications

SKU #	147092
Rated Voltage	48V
Rated Current	16A
Protection Class	Class III