

MFL RAIL SMD LINEAR

SKU# 147097

Rated Voltage 48V — — —

To ensure correct function and safety, please read and follow all instructions carefully before assembly, installation and use of this luminaire. Please keep instructions for future reference.

NOTE: This installation instruction applies to the luminaire only.

The MFL Rail track and luminaires are sold separately.

When working with 240V, a licensed electrician is required.

Warranty

- This luminaire is covered by a 3-year warranty valid for in-store replacement or refund only.
- The warranty period starts from the date of purchase, not the date of installation.
- Please retain the proof of purchase for any warranty enquiries.
- The use of non-compatible drivers (sold separately) may damage the LEDs and will void the warranty.
- The use of non-compatible dimmers (sold separately) may damage the LEDs and will void the warranty.
- The warranty is subject to the luminaire being used with a MFL Rail track system (sold separately).
- The warranty will be void if there is any damage due to improper usage or modification to the luminaire.
- Failure to comply with the instructions in this manual may increase the risk of damage or injury and will void the warranty.

Installation Requirements

- The installation location must have a MFL Rail track (sold separately) pre-installed. If you do not have an existing MFL Rail track (sold separately) pre-installed, contact a licensed electrician for installation.
- This luminaire is recommended to be used with the MFL driver SKU# 147095 (sold separately).
- This luminaire is recommended to be used with the MFL Rail track SKU# 147090, 147091 (sold separately).
- Select a suitable location for installation:
 - This luminaire is suitable for indoor use only.
 - The maximum mechanical loading for the MFL Rail track (not included), inclusive of the weight of luminaires and accessories is 2.5kg. Do not exceed this weight.
 - The MFL Rail track (not included) is unsuitable for the connection of inductive loads.
 - It is the user's responsibility to ensure electrical, mechanical and thermal compatibility between the MFL Rail track (not included) and the luminaires attached to it.
 - If installing a luminaire in an area prone to moisture, ensure that the area is well ventilated, and an appropriately rated exhaust fan is used if required. Damage or corrosion caused by moisture is not a product fault, and as such is not covered under warranty.
- This luminaire is only dimmable when used together with a dimmable driver. The MFL driver SKU# 147095 (sold separately) is recommended.
- The use of a LED dimmer is strongly recommended. Please see **Highly Recommended Dimmers** section of the Specifications on Page 3 for a list of SKUs that have been specifically designed & tested for use with this luminaire.

NOTE: Dimming may cause buzzing sounds or a slight flicker. There may be slight delays with the LED light start up or slight uneven light performance when more than one LED luminaire is linked together, switched ON or dimmed. This is not a product fault and as such is not covered under warranty.

NOTE: Some dimmers have a minimum load of 20W. Ensure the dimmer position is on the maximum setting before turning on the LED luminaire and adjust the dimmer down to your desired light level.

NOTE: Testing cannot account for installation variables such as variation in mains supply voltage, cable capacitance, electrical noise, transients, surges and ripple control signals (commonly found in NSW & QLD).

NOTE: The information provided is correct to the best of Beacon Lighting's knowledge at the date of publication.

- Take care not to pull any electrical wires during unpacking as this may damage the connection.
- Lay out all the components on a smooth surface and make sure no components are missing before assembling. If parts are missing, return the complete product to the place of purchase for inspection or replacement.
- Check whether the luminaire has been damaged during transport. Do not operate/install any product which appears damaged in any way. Return the complete product to the place of purchase for inspection, repair or replacement.

Installation Directions

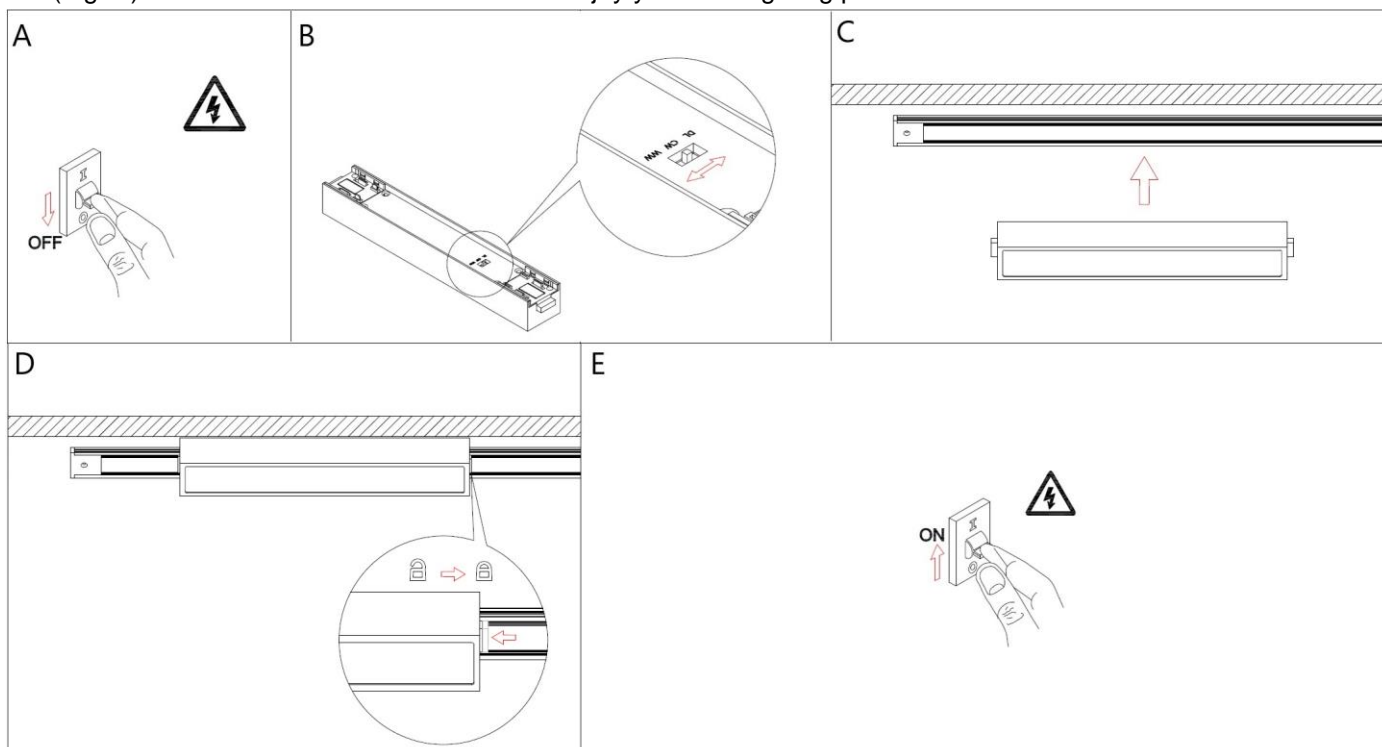
WARNING: Ensure power to the circuit you are working on has been switched OFF before commencing the installation. (Fig. A)

1. Remove all packaging material from the luminaire and be careful not to throw away accessories that may be hidden within the packaging material.

NOTE: The installation location must have a MFL Rail track (sold separately) pre-installed.

If you do not have an existing MFL Rail track (sold separately) pre-installed, please contact a licensed electrician for installation.


2. Select the colour temperature for the luminaire by sliding the switch on the back of the luminaire. (Fig. B)
DL: Day Light, **CW:** Cool White, **WW:** Warm White.
3. Ensure the two tabs on the side of the luminaire are unlocked and sticking out. If the tabs are not unlocked, press the tabs so they stick out. Attach the luminaire into the MFL Rail track (sold separately). (Fig. C)
4. To lock and secure the luminaire onto the MFL Rail track (sold separately) press the tabs at both ends of the luminaire. (Fig. D)
5. After the installation is complete, check and ensure the luminaire is secure and switch the power ON to the circuit. (Fig. E) Switch on the luminaire to test and enjoy your new lighting product.



Safety Tips

- Always ensure the power is OFF and the luminaire has cooled down before performing any maintenance, cleaning or making any adjustment to the luminaire.
- To avoid injury or damage to the luminaire, ensure that power leads and screws are secure before connecting the power.
- The light source of this luminaire is not replaceable; when the light source reaches its end of life the whole luminaire shall be replaced.
- There are no user serviceable parts, do not attempt to dismantle or open the luminaire.
- Select a suitable location away from liquids and hazards.
- To clean, wipe with a soft damp cloth. Do NOT soak or immerse the luminaire in water or other liquids.
- Ensure that the luminaire does not come in contact with corrosive chemicals/solvents or abrasive cleaners etc.

Specifications

SKU #	147097
Rated Voltage	48V  *
Rated Wattage	12W
LED Specs	750 lumens Max, 3000K/4000K/5000K, CRI>90, Dimmable **
Highly Recommended Dimmers	Lucci Power: SKU# 290989, 290992, 290993, 290994. MFL Artisan: SKU# 197015, 197016, 197017, 197018. Lucci LEDlux: SKU# 290997. Lucci Connect: SKU# 299043. Buster + Punch: DIM-002.
Compatible Dimmers	Clipsal: 31E2PUDM, 31E2RUDM, 32E450UDM. DIGINET LED Smart MEDM HPM: Cat. 400T.
Weight	0.2kg
Dimensions	L:250mm W:39mm H:30mm

* This luminaire is recommended to be used with the MFL driver SKU# 147095 (sold separately).

** This luminaire is only dimmable when used together with a dimmable driver. The MFL driver SKU# 147095 (sold separately) is recommended.