

SCRIPT II 1LIGHT TRACK HEAD

SKU# 147120, 147121, 147122

Rated Voltage 220-240V~ 50Hz

To ensure correct function and safety, please read and follow all instructions carefully before assembly, installation and use of this luminaire. Please keep instructions for future reference.

NOTE: This installation instruction applies to the luminaire only.

The Lucci track systems and lamp are sold separately.

When working with 240V, a licensed electrician is required.

Warranty

- This luminaire is covered by a 12-month warranty valid for in-store replacement or refund only.
- The warranty period starts from the date of purchase, not the date of installation.
- Please retain the proof of purchase for any warranty enquiries.
- The warranty will be void if there is any damage due to improper usage or modification to the luminaire.
- The warranty is subject to the luminaire being used with a Lucci track system (sold separately).
- Failure to comply with the instructions in this manual may increase the risk of damage or injury and will void the warranty.

Installation Requirements

- The installation location must have a Lucci track (sold separately) pre-installed on the ceiling.
If you do not have an existing Lucci track (sold separately) pre-installed on the ceiling, please contact a licensed electrician for installation.
- This luminaire is recommended to be used with the Lucci track II system (SKU# 149052, 149053, 149054, 149055). This luminaire is also compatible with Lucci track I system (SKU# 140020, 140022, 140057, 140058).
- Select a suitable location for installation:
 - This luminaire is suitable for indoor use only.
 - The mounting point must support 2 times the weight of the luminaire.
 - If installing a luminaire in an area prone to moisture, ensure that the area is well ventilated, and an appropriately rated exhaust fan is used if required. Damage or corrosion caused by moisture is not a product fault, and as such is not covered under warranty.
- **Do not exceed the maximum wattage rating. The luminaire is only suitable for LED globes.**
- Take care not to pull any electrical wires during unpacking as this may damage the connection.
- Lay out all the components on a smooth surface and make sure no components are missing before assembling. If parts are missing, return the complete product to the place of purchase for inspection or replacement.
- Check whether the luminaire has been damaged during transport. Do not operate/install any product which appears damaged in any way. Return the complete product to the place of purchase for inspection, repair or replacement.

Installation Directions

WARNING: Ensure power to the circuit you are working on has been switched OFF before commencing the installation.

1. Remove all packaging material from the product and be careful not to throw away accessories that may be hidden within the packaging material.

NOTE: The installation location must have a Lucci track (sold separately) pre-installed on the ceiling.
If you do not have an existing Lucci track (sold separately) pre-installed on the ceiling, please contact a licensed electrician for installation.

2. Use a screw driver to loose the screws (C) of the adjustment rail (B).

NOTE: Decide the height of the lampholder according to the shades intended to be installed. The luminaire is only compatible to the following MFL SCRIPT shades and decorative handles (Sold separately).

SKU#147075, 147076, 147077 (MFL SCRIPT SHORT CYLINDER SHADE – Height 100mm) (E)

SKU# 147078, 147079, 147080 (MFL SCRIPT TALL CYLINDER SHADE – Height 142mm) (F)

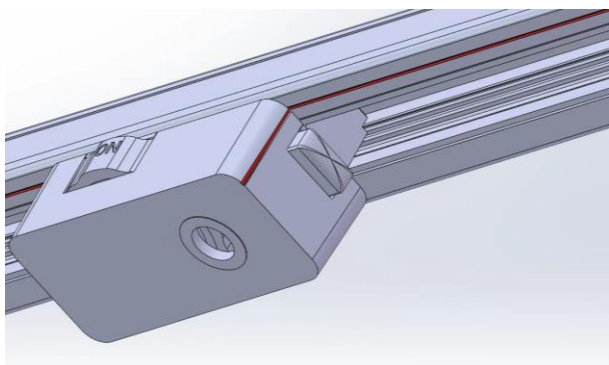
SKU# 147081, 147082, 147083 (MFL SCRIPT TAPERED CYLINDER SHADE – Height 101mm) (G)

SKU# 147084, 147085, 147086, 147087 (MFL SCRIPT DECORATIC HANDLE) (H)

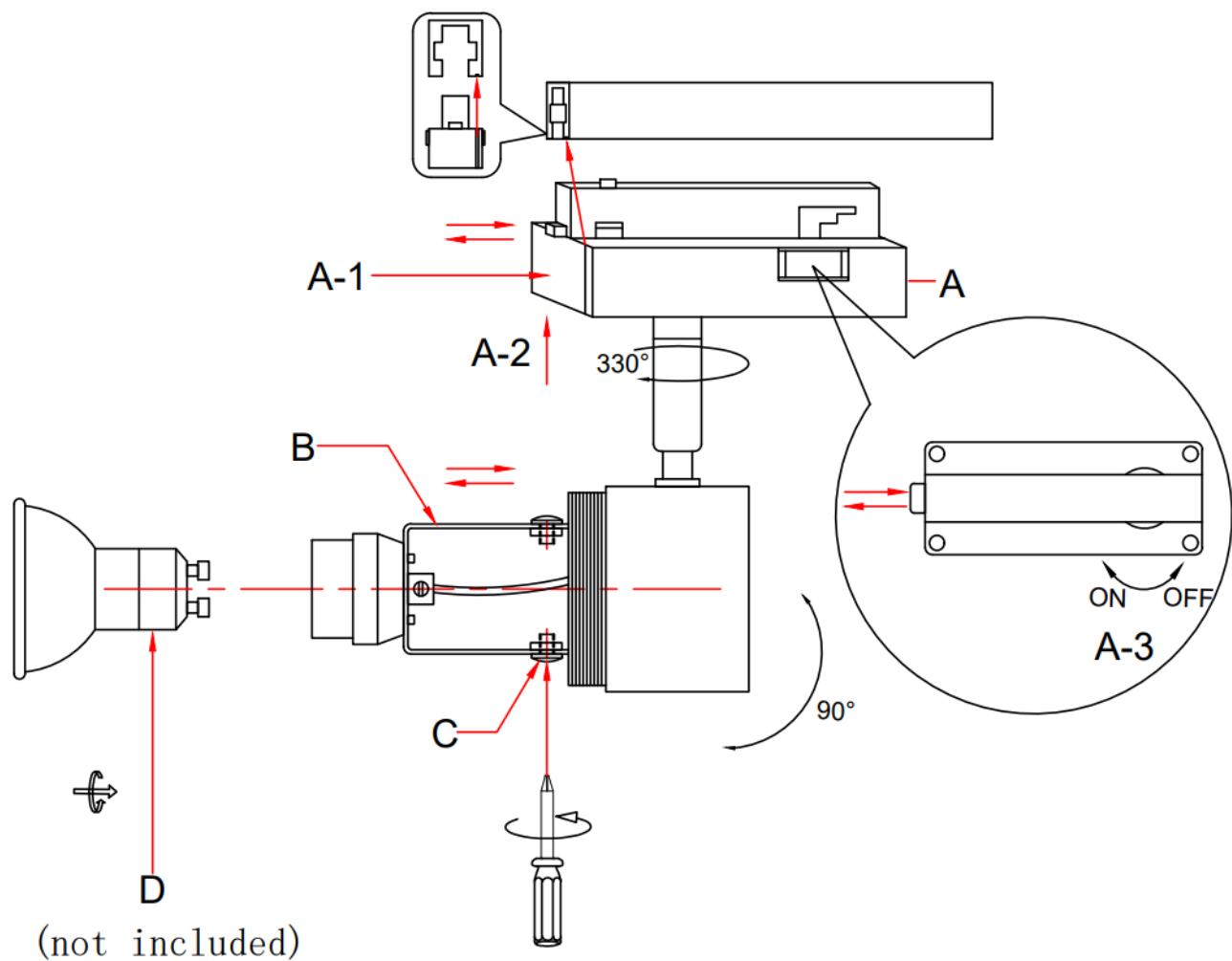
3. Adjust the height of the lampholder via the adjustable rail (B). Ensure the screw (C) is tighten after adjustment.
4. Install a LED GU10 globe (D-Not included) onto the lamp holder. Do not exceed the maximum wattage rating.
5. Install the decorative handle (H-Not included) onto the luminaire if needed.
6. Install the lamp shade (E/F/G- Not included) onto the luminaire.


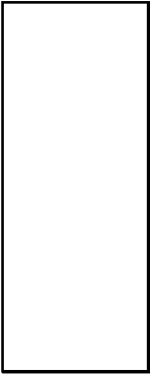
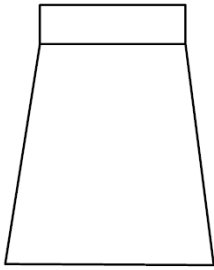
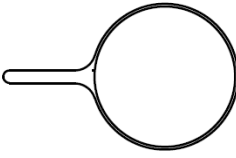
NOTE: Lamp shades MUST BE installed before turning on the power.

7. Look at the track adaptor (A) and locate the side with the earth pin or the groove on the housing.
Look at the Lucci track (sold separately) and locate the side which has the groove.
Align the grove on the track adaptor with the grove on the Lucci track (sold separately) to ensure the luminaire is inserted in the correct direction. (refer to the picture below)



8. Check and ensure the lock on the track adaptor (A) is in the “OFF” position.
9. Push and hold down on the locking clip on the track adaptor (A).
Insert the track adaptor (A) into the Lucci track (sold separately) and secure it by twisting the lock on the track adaptor (A) to the “ON” position.
10. Hold onto the track adapter (A) and adjust the luminaire head to your desired angle.
NOTE: DO NOT adjust the head up or down more than 90° and DO NOT rotate the head more than 330°.
As this may damage the knuckle joint and the internal wires.
11. After the installation, switch on the luminaire to test and enjoy your new lighting product.



			
E(100mm)	F(142mm)	G(101mm)	H
147075	147078	147081	147084
147076	147079	147082	147085
147077	147080	147083	147086
			147087

NOTE: DO NOT adjust the head up or down more than 90° and **DO NOT** rotate the head more than 330°. As this may damage the knuckle joint and the internal wires.

Safety Tips

- Always ensure the power is OFF and the luminaire has cooled down before performing any maintenance, cleaning, changing the lamp or making any adjustment to the luminaire.
- To avoid injury or damage to the luminaire, ensure that power leads and screws are secure before connecting the power.
- Select a suitable location away from liquids and hazards.
- To clean, wipe with a soft damp cloth. Do NOT soak or immerse the luminaire in water or other liquids.
- Ensure that the luminaire does not come in contact with corrosive chemicals/solvents or abrasive cleaners etc.

Specifications

SKU #	147120	147121	147122
Colour	Black	White	Brass Finish
Rated Voltage	220-240V~ 50Hz		
Rated Wattage	10W Max. (LED only)		
Lamp Holder	GU10		
Compatible shades and decorative handles	SKU#147075, 147076, 147077 (MFL SCRIPT SHORT CYLINDER SHADE-Sold separately) SKU# 147078, 147079, 147080 (MFL SCRIPT TALL CYLINDER SHADE-Sold separately) SKU# 147081, 147082, 147083 (MFL SCRIPT TAPERED CYLINDER SHADE-Sold separately) SKU# 147084, 147085, 147086, 147087 (MFL SCRIPT DECORATIC HANDLE-Sold separately)		
Weight	0.28kg		
Dimensions	H:180mm L:125mm W:125mm Max		