

HUSTON II LED TRACK SPOT

SKU# 149068, 149069

Rated Voltage 220-240V~ 50Hz

To ensure correct function and safety, please read and follow all instructions carefully before assembly, installation and use of this luminaire. Please keep instructions for future reference.

NOTE: This installation instruction applies to the luminaire only.

The Lucci track systems and lamp are sold separately.

When working with 240V, a licensed electrician is required.

Warranty

- This luminaire is covered by a 3-year warranty valid for in-store replacement or refund only.
- The warranty period starts from the date of purchase, not the date of installation.
- Please retain the proof of purchase for any warranty enquiries.
- The use of non-compatible dimmers may damage the LED luminaire and will void your warranty.
- The warranty will be void if there is any damage due to improper usage or modification to the luminaire.
- The warranty is subject to the luminaire being used with a Lucci track system (sold separately).
- Failure to comply with the instructions in this manual may increase the risk of damage or injury and will void the warranty.

Installation Requirements

- The installation location must have a Lucci track (sold separately) pre-installed on the ceiling.
If you do not have an existing Lucci track (sold separately) pre-installed on the ceiling, please contact a licensed electrician for installation.
- This luminaire is recommended to be used with the Lucci track II system (SKU# 149052, 149053, 149054, 149055). This luminaire is also compatible with Lucci track I system (SKU# 140020, 140022, 140057, 140058).
- Select a suitable location for installation:
 - This luminaire is suitable for indoor use only.
 - The mounting point must support 2 times the weight of the luminaire.
- If installing a luminaire in an area prone to moisture, ensure that the area is well ventilated, and an appropriately rated exhaust fan is used if required. Damage or corrosion caused by moisture is not a product fault, and as such is not covered under warranty.
- **“Scene Change at the Wall Switch”** functionality is enabled when the slide switch on the luminaire is set to the “WC” position. This colour shifting function is designed to operate with a mechanical or relay ON/OFF switch, as well as selected semi-conductor ON/OFF switches, such as MFL Artisan or Lucci Power Dimmers with ON/OFF functionality. Please note the colour shifting function may not operate correctly on all semi-conductor switches.
- This luminaire is dimmable and the use of a LED dimmer is strongly recommended. Please see **Highly Recommended Dimmers** Section of the Specifications on Page 4 for a list of SKUs that have been specifically designed & tested for use with this luminaire.

NOTE: Dimming may cause buzzing sounds or a slight flicker. There may be slight delays with the LED light start up or slight uneven light performance when more than one LED light luminaire is linked together, switched ON or dimmed. This is not a product fault and as such is not covered under warranty.

NOTE: Some dimmers have a minimum load of 20W. Ensure the dimmer position is on the maximum setting before turning on the LED light and adjust the dimmer down to your desired light level.

NOTE: Testing cannot account for installation variables such as variation in mains supply voltage, cable capacitance,

electrical noise, transients, surges and ripple control signals (commonly found in NSW & QLD).

NOTE: The information provided is correct to the best of Beacon Lighting's knowledge at the date of publication.

- Take care not to pull any electrical wires during unpacking as this may damage the connection.
- Lay out all the components on a smooth surface and make sure no components are missing before assembling. If parts are missing, return the complete product to the place of purchase for inspection or replacement.
- Check whether the luminaire has been damaged during transport. Do not operate/install any product which appears damaged in any way. Return the complete product to the place of purchase for inspection, repair or replacement.

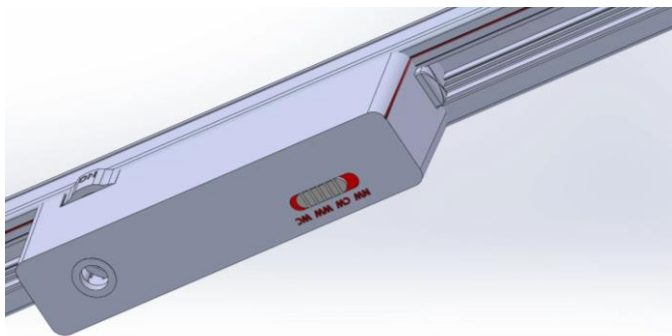
Installation Directions

WARNING: Ensure power to the circuit you are working on has been switched OFF before commencing the installation.

1. Remove all packaging material from the product and be careful not to throw away accessories that may be hidden within the packaging material.

NOTE: The installation location must have a Lucci track (sold separately) pre-installed on the ceiling. If you do not have an existing Lucci track (sold separately) pre-installed on the ceiling, please contact a licensed electrician for installation.

2. Look at the track adaptor of this luminaire and locate the side with the earth pin or the groove on the housing. Look at the Lucci track (sold separately) and locate the side which has the groove. Align the groove on the track adaptor with the groove on the Lucci track (sold separately) to ensure the luminaire is inserted in the correct direction. (refer to the picture below)



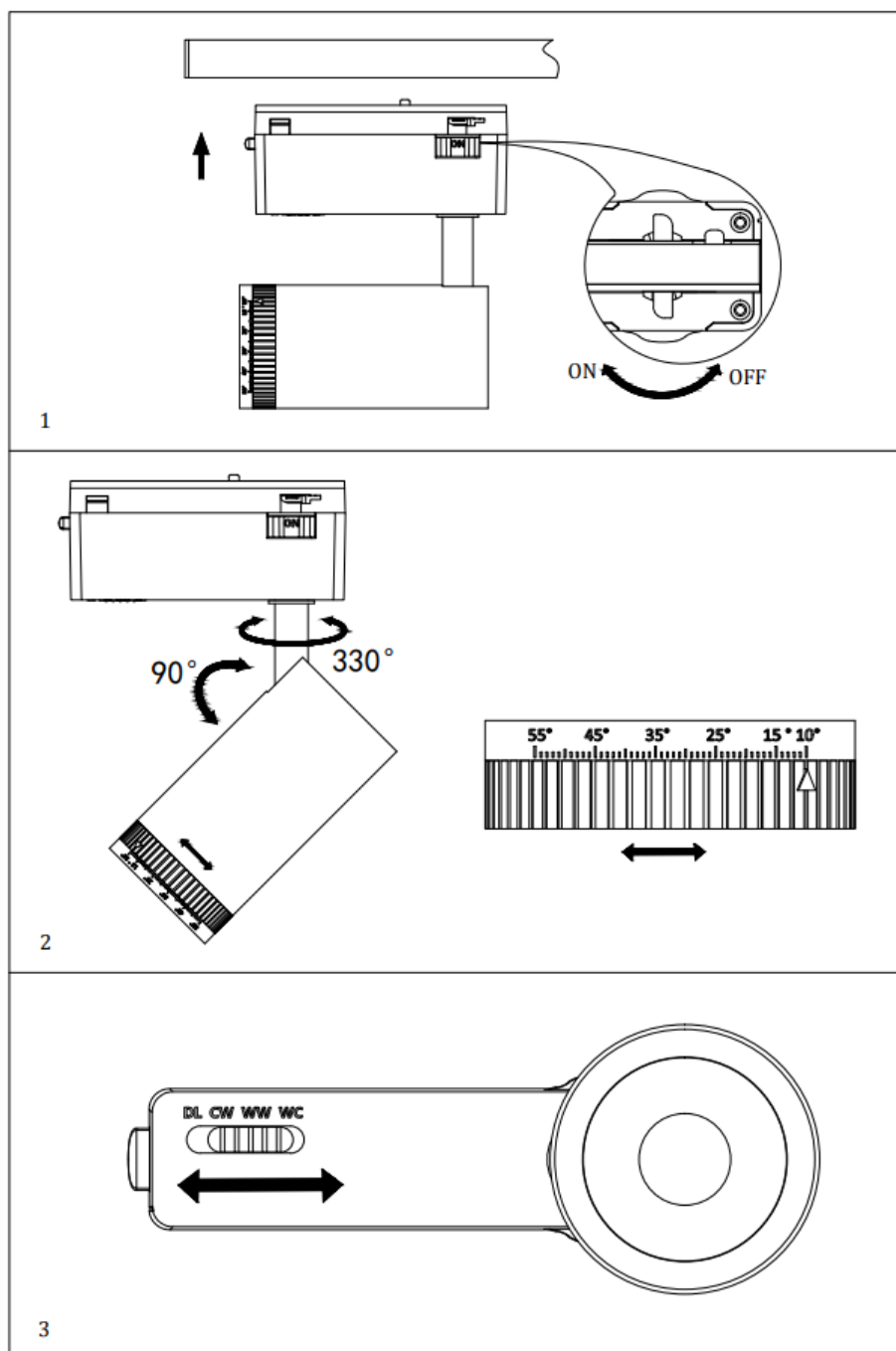
3. Check and ensure the lock on the track adaptor is in the "OFF" position. (Picture 1)
4. Push and hold down on the locking clip on the track adaptor.
Insert the track adaptor into the Lucci track (sold separately) and secure it by twisting the lock on the track adaptor to the "ON" position. (Picture 1)
5. Hold onto the track adapter and adjust the luminaire head to your desired angle. (Picture 2)

NOTE: DO NOT adjust the head up or down more than 90° and DO NOT rotate the head more than 330°. As this may damage the knuckle joint and the internal wires.

6. Adjust your desired beam angle (10 degree to 55 degree). (Picture 2)
7. The colour temperature of this luminaire can be pre-set to a desired colour temperature OR operated via the connected wall switch. Use the slide switch on the luminaire to select your desired colour temperature ("WW" for 3000K *Warm White*, "CW" for 4000K *Cool White*, or "DL" for 5000K *Daylight*) or move the switch to the "WC" (*Wall Control*) setting to enable "Scene Change at the Wall Switch" functionality. (Picture 3)

NOTE: Before using the slide switch on the luminaire to select the colour temperature, the luminaire MUST be switched OFF, or it may damage the LED driver.

8. After the installation, switch on the luminaire to test and enjoy your new lighting product.



SCENE CHANGE AT THE WALL SWITCH (3000K – 5000K – 4000K):

- To operate the “Scene Change at the Wall Switch” colour shifting function, use the connected mechanical or relay ON/OFF wall switch.

NOTE: The slide switch on the luminaire must be at the “WC” (Wall Control) position.

NOTE: If the luminaire is installed with dimmer, it is recommended to turn the dimmer to the highest position before adjusting the colour temperature as below.

- While the luminaire is on, toggle the wall switch OFF and ON again within 3 seconds. The colour shifting sequence will jump from 3000K → 5000K → 4000K.
- For the colour shifting to memorise the colour temperature, leave the wall switch OFF for over 7 seconds.
- To reset the colour shifting, toggle the wall switch OFF and ON twice within 1 second. Repeat if it doesn't reset.

NOTE: If using an MFL Artisan or Lucci Power Dimmer, please see the Dimmer Installation Manual for instructions on how to operate the colour shifting functions correctly.

Safety Tips

- Always ensure the power is OFF and the luminaire has cooled down before performing any maintenance, cleaning, changing the lamp or making any adjustment to the luminaire.
- To avoid injury or damage to the luminaire, ensure that power leads and screws are secure before connecting the power.
- Select a suitable location away from liquids and hazards.
- To clean, wipe with a soft damp cloth. Do NOT soak or immerse the luminaire in water or other liquids.
- Ensure that the luminaire does not come in contact with corrosive chemicals/solvents or abrasive cleaners etc.
- The light source of this luminaire is not replaceable; when the light source reaches its end of life, the whole luminaire shall be replaced. There are no serviceable parts, do not attempt to dismantle or open the product.

Specifications

SKU #	149068	149069
Colour	Textured White	Textured Black
Rated Voltage	220-240V~ 50Hz	
Rated Wattage	13W	
LED specs	Colour shifting LEDs*, Dimmable, CRI>90	
Colour Temperature and Lumens	3000K – 800 lumens 5000K – 900 lumens 4000K – 950 lumens	
Highly Recommended Dimmers	MFL Artisan SKU# 197015, 197016, 197017, 197018. Lucci Power SKU# 290989, 290992, 290993, 290994. Buster + Punch DIM-002	
Compatible Dimmers	Clipsal 31E2PUDM, 31E2RUDM, 32E450UDM. DIGINET LED Smart MEDM. HPM Cat. 400T.	
Weight	0.6kg	
Dimensions	H:220mm L:230mm W:130mm MAX	

***NOTE:** Use the slide switch on the luminaire to select the colour temperature (“WW” for 3000K *Warm White*, “CW” for 4000K *Cool White*, or “DL” for 5000K *Daylight*) or move the switch to the “WC” (*Wall Control*) setting to enable “Scene Change at the Wall Switch” functionality.

***NOTE:** The “Scene Change at the Wall Switch” function is designed to operate with a mechanical or relay ON/OFF switch, as well as selected semi-conductor ON/OFF switches, such as MFL Artisan or Lucci Power Dimmers with ON/OFF functionality outlined above. Please note this colour shifting function may not operate correctly on all semi-conductor switches.