

PANORAMA READING LIGHT

SKU# 150710, 150711

Rated Voltage 220-240V~ 50Hz

Thank you for purchasing this quality Lucci product. To ensure correct function and safety, please read and follow all instructions carefully before assembly, installation and use of this luminaire. Please keep instructions for future reference.

Warranty

- This luminaire is covered by a 3-year warranty. The warranty is from the date of purchase, not the date of installation.
- If the luminaire is not assembled and installed by a licensed electrician the warranty will be void.
- Please retain the proof of purchase and evidence of installation by a licensed electrician for any warranty enquiries.
- Warranty will be void if there is any damage due to improper usage or modification to the luminaire.
- Failure to comply with the instructions in this manual may increase the risk of damage or injury and will void the warranty.

Installation Requirements


- Must be assembled and installed by a licensed electrician.
- All wiring and installation of the luminaire must adhere to the latest local and national wiring rules. eg. AS/NZS 3000 Electrical installations.
- This luminaire is a Class I product and must be earthed during wiring and installation.
- **This luminaire is dimmable via the touch switch. DO NOT connect the luminaire to an external dimmer.**
- Select a suitable location for installation:
 - This luminaire is suitable for indoor use only.
 - The mounting point must support 2 times the weight of the luminaire.
 - Ensure the luminaire is not installed in the direct line of an air vent/system.
 - If installing a luminaire in an area prone to moisture, ensure that the area is well ventilated and an appropriately rated exhaust fan is used if required. Damage or corrosion caused by moisture is not a product fault, and as such is not covered under warranty.
- Take care not to pull any electrical wires during unpacking as this may damage the connection.
- Lay out all the components on a smooth surface and make sure no components are missing before assembling. If parts are missing, return the complete product to the place of purchase for inspection or replacement.
- Check whether the luminaire has been damaged during transport. Do not operate/install any product which appears damaged in any way. Return the complete product to the place of purchase for inspection, repair or replacement.
- Ensure power to the circuit you are working on has been switched OFF before commencing any electrical work.

Installation Directions

Installation method I – Surface mounted (Figure 1)

1. Remove all packaging material from the product and be careful not to throw away accessories that may be hidden within the packaging material. If assembly is required, place the luminaire on a smooth non-scratch surface.
2. Remove the mounting bracket from the luminaire by loosening the screws on both sides.
3. Use the mounting bracket as a template to mark the screw positions onto the ceiling and drill the holes.
4. Install the mounting bracket onto the ceiling by using appropriately sized mounting screws and anchors. Ensure the screws and anchors used are suitable for the mounting surface and the surrounding environment.
5. Connect the mains supply wire to the terminal block.

Mains Supply Wire

Earth – Yellow/Green 

Neutral – Blue or Black

Live – Brown or Red

Luminaire Wire / Terminal Block

Yellow/Green 

Blue or N

Brown or L

NOTE: Ensure the wires are secure and no bare wires are exposed.

6. Install the luminaire back onto the mounting bracket and secure it by tightening the screws.

NOTE: Take care to not damage any of the wirings by neatly placing them inside the back of the luminaire.

7. Adjust the spotlight to your desired position.

NOTE: Do not bend the spotlight up and down more than 90° and do not rotate the spotlight more than 330° as this may damage the knuckle joint or damage the internal wiring.

8. Switch on the luminaire to test all the lighting functions and enjoy your new lighting product.
9. Short press the touch switch to switch on/off and change colour temperature (3000K-4000K-5000K);
Long press the touch switch to dim the light down.
10. Charge your device via the USB output of the luminaire. The rated output of the USB output is 5V DC, 2.1A. Refer to the instruction manual of your device for the required charge ratings.

Installation method II – Recessed mounted (Figure 2)

1. Remove all packaging material from the product and be careful not to throw away accessories that may be hidden within the packaging material. If assembly is required, place the luminaire on a smooth non-scratch surface.
2. Remove the mounting bracket from the luminaire by loosening the screws on both sides.
3. Cut an installation hole of 170mm x 60mm into the ceiling.
4. Push the mounting bracket into the cut-out hole. Use the screwdriver to turn the two locking ears to the side.
5. Connect the mains supply wire to the terminal block.


Mains Supply Wire

Earth – Yellow/Green 

Neutral – Blue or Black

Live – Brown or Red

Luminaire Wire / Terminal Block

Yellow/Green 

Blue or N

Brown or L

NOTE: Ensure the wires are secure and no bare wires are exposed.

6. Install the luminaire back onto the mounting bracket and secure it by tightening the screws.

NOTE: Take care to not damage any of the wirings by neatly placing them inside the back of the luminaire.

7. Adjust the spotlight to your desired position.

NOTE: Do not bend the spotlight up and down more than 90° and do not rotate the spotlight more than 330° as this may damage the knuckle joint or damage the internal wiring.

8. Switch on the luminaire to test all the lighting functions and enjoy your new lighting product.
9. Short press the touch switch to switch on/off and change colour temperature (3000K-4000K-5000K);
Long press the touch switch to dim the light down.
10. Charge your device via the USB output of the luminaire. The rated output of the USB output is 5V DC, 2.1A. Refer to the instruction manual of your device for the required charge ratings.

NOTE: Insulation can be covered and abutted against the recessed luminaire as per the IC requirement. The recessed luminaire can be abutted to any structural members, building elements or object

Figure 1
Installation method I – Surface mounted

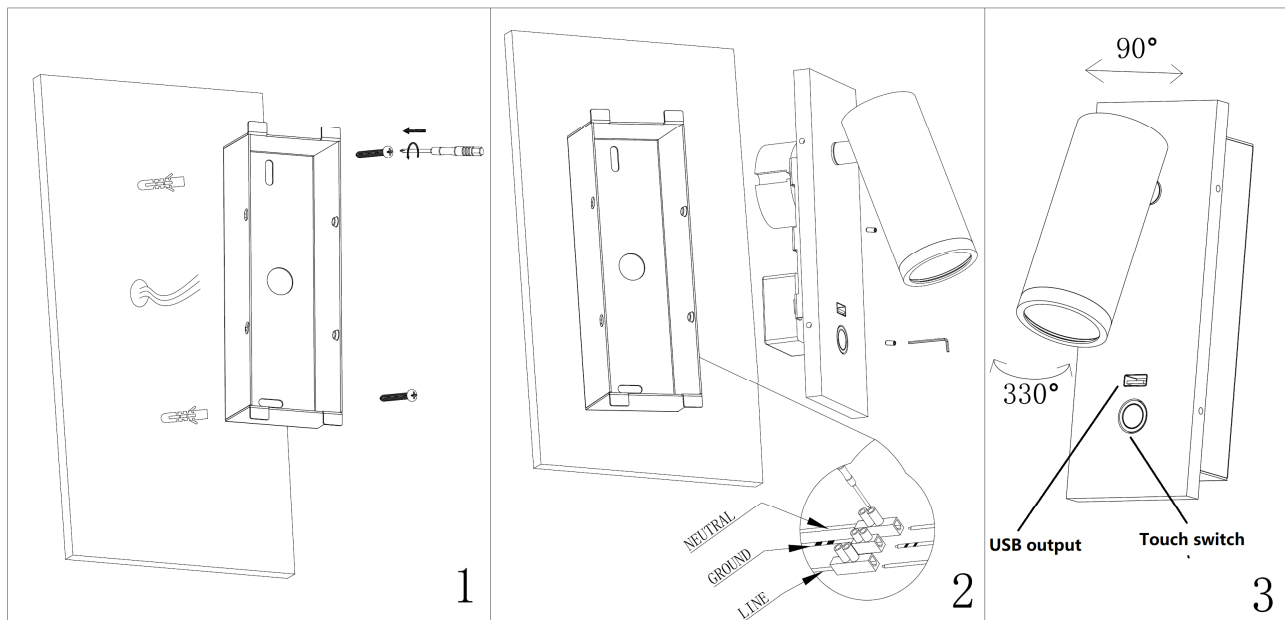
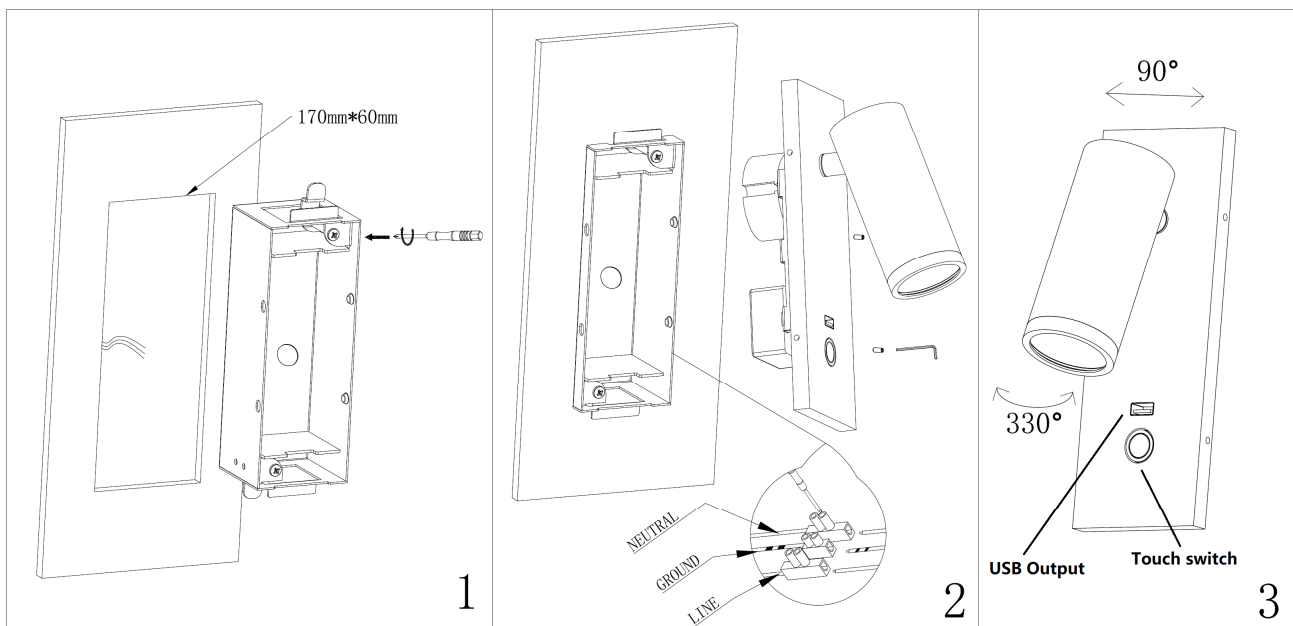


Figure 2
Installation method II –Recesse mounted



Safety Tips

- Always ensure the power is OFF and the luminaire has cooled down before performing any maintenance, cleaning or making any adjustment to the luminaire.
- To avoid injury or damage to the luminaire, ensure that power leads and screws are secure before connecting the power.
- The light source of this luminaire is not replaceable; when the light source reaches its end of life the whole luminaire shall be replaced. There are no serviceable parts, do not attempt to dismantle or open the luminaire.
- Select a suitable location away from liquids and hazards.
- To clean, wipe with a soft damp clean cloth. Do NOT soak or immerse the luminaire in water or other liquids.
- Ensure that the luminaire does not come in contact with corrosive chemicals/solvents or abrasive cleaners etc.

Specifications

SKU #	150710	150711
Colour	Black	White
Rated Voltage	220-240V~ 50Hz	
Rated Wattage	12W	
Insulation Class	Class I	
LEDs	3000K - 4000K - 5000K 750 lumens, CRI >90, Dimmable via touch switch	
USB Charger	5V 2.1A	
Weight	0.8 kg	
Dimensions	H:235mm W:120mm E:165mm	