

RENO 3LT SPOTLIGHT

SKU# 151027, 151031

Rated Voltage 220-240V~ 50Hz

Thank you for purchasing this quality Lucci product. To ensure correct function and safety, please read and follow all instructions carefully before assembly, installation and use of this luminaire. Please keep instructions for future reference.

Warranty

- This luminaire is covered by a 12 month warranty. The warranty is from date of purchase, not the date of installation.
- If the luminaire is not installed by a licensed electrician it will void the warranty.
- Please retain proof of purchase and evidence of installation by a licensed electrician for any warranty enquiries.
- Warranty will be void if there is any damage due to improper usage or modification to the luminaire.
- Failure to comply with the instructions in this manual may increase the risk of damage or injury and will void warranty.

Installation requirements

- Must be assembled and installed by a licensed electrician.
- All wiring and installation of the luminaire must adhere to the latest local and national wiring rules.
eg. AS/NZS 3000 Electrical installations.
- This luminaire is a Class I product and must be earthed during wiring and installation
- Select a suitable location for installation:
 - This product is suitable for indoor use only.
 - The mounting point must support 2 times the weight of the luminaire.
 - Ensure the luminaire is not installed next to any air vent system.
 - When installing a luminaire in an area prone to moisture, ensure that the area is well ventilated and an appropriately rated exhaust fan is used if required. Damage or corrosion caused by moisture is not a product fault, and as such is not covered under warranty.
- Take care not to pull any electrical wires during unpacking as this may damage the connection.
- Lay out all the components on a smooth surface and make sure there are no components missing before assembling. If parts are missing, return the complete product to the place of purchase for inspection or replacement.
- Check whether the luminaire has been damaged during transport. Do not operate/install any product which appears damaged in any way. Return the complete product to the place of purchase for inspection, repair or replacement.
- Ensure power to the circuit you are working on has been switched OFF before commencing any electrical work.

Installation Directions

1. Remove all packaging material from the product and be careful not to throw away accessories that may be hidden within the packaging material. If assembly is required, place the luminaire on a smooth non-scratch surface.
2. Remove the shades from luminaire. (Fig. 2)
3. Install globes (not included) into the lamp holders and install the shades back onto the luminaire (Fig. 3)
4. Remove the mounting bracket from the luminaire by loosening the screws on the side. (Fig. 4)
5. Use the mounting bracket as a template to mark the screw positions on the wall. (Fig. 5)
6. Install the mounting bracket onto the wall by using appropriately sized mounting screws and anchors. Ensure the screws and anchors used are suitable for the mounting surface and the surrounding environment. (Fig. 5 & 6)
7. Connect the mains supply wire to the terminal block. (Fig. 7)

Mains Supply Wire

Earth – Yellow/Green

Neutral – Blue

Live – Brown

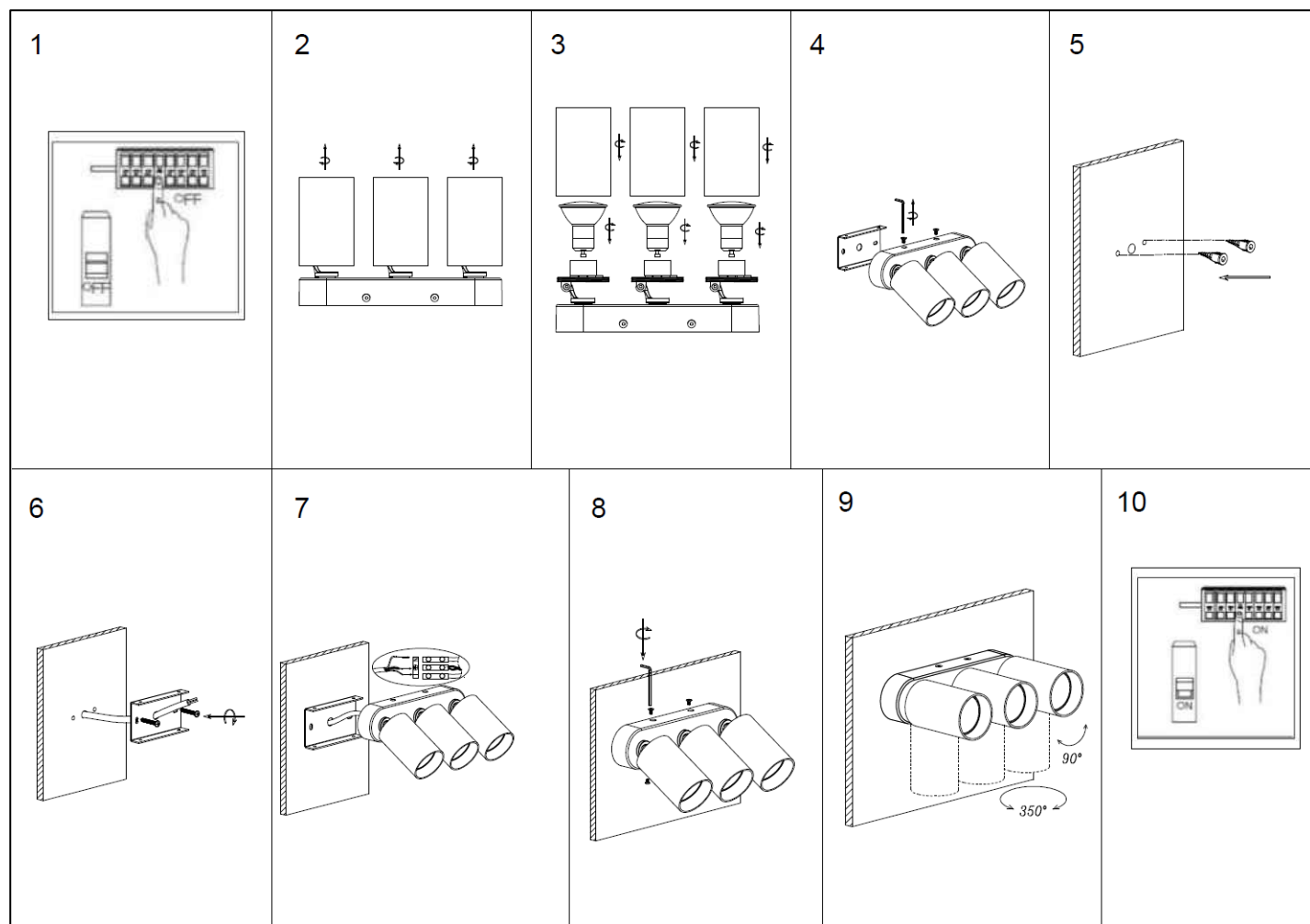
Luminaire Wire / Terminal Block

Yellow/Green or 

Blue or N

Brown or L

8. Ensure the wires are secure and no bare wires are exposed. (Fig. 7)
 9. Install the luminaire back onto the mounting bracket and secure by tightening the screws on the side. (Fig. 8).
 10. Adjust the spot heads to your desired angle. (Fig.9)
- NOTE: Do not bend the spot head more than 90° as this may damage the internal wiring.**
- NOTE: Do not rotate the spot head more than 350° as this may damage the internal wiring.**
11. After the installation, switch on the luminaire to test all the lighting functions and enjoy your new luminaire. (Fig.10)



NOTE: Do not bend the spot heads more than 90° as this may damage the internal wiring.

NOTE: Do not rotate the spot head more than 350° as this may damage the internal wiring.

Safety Tips

- Always ensure the power is OFF and the luminaire has cooled down before performing any maintenance, cleaning, changing the globe or making any adjustment to the luminaire.
- To avoid injury or damage to the luminaire, ensure that power leads and screws are secure before connecting the power.
- Select a suitable location away from liquids and hazards
- Ensure that the luminaire does not come in contact with corrosive chemicals/solvents or abrasive cleaners etc.
- To clean, wipe with a damp clean cloth. Do NOT soak or immerse the luminaire in water or other liquids.

Specifications

| SKU # | 151027 | 151031 |
|------------------|-------------------------|------------|
| Colour | Sand White | Sand Black |
| Insulation Class | Class I | |
| Rated Voltage | 220-240V~ 50Hz | |
| Rated Wattage | 30W Max. (3x Max. 10W) | |
| Lamp Holder | GU10 | |
| Weight | 0.7 kg | |
| Dimensions | H:150mm W:380mm E:220mm | |