

ARTISAN LED SPOT LIGHT

SKU# 151086, 151087

Rated Voltage 220-240V~ 50Hz

Thank you for purchasing this quality MFL product. To ensure correct function and safety, please read and follow all instructions carefully before assembly, installation and use. Please keep instructions for future reference.

Warranty

- This luminaire is covered by a 3 year warranty. The warranty is from date of purchase, not the date of installation. Please retain proof of purchase.
- The use of non-compatible dimmers may damage your LED luminaire and will void your warranty.
- Warranty will be void if there is any damage due to improper usage or modification to the luminaire.
- Failure to comply with the instructions in this manual may increase the risk of damage or injury and will void warranty.

Installation Requirements

- Must be assembled and installed by a licensed electrician.
- All wiring and installation of the luminaire must adhere to latest local and national wiring rules. eg. AS/NZS 3000 Electrical installations.
- The luminaire is a Class I product and must be earthed during wiring and installation.
- Select a suitable location for installation:
 - This luminaire is suitable for indoor use only.
 - This luminaire is only suitable to be installed onto the wall. Do not install onto the ceiling.
 - The mounting point must support 2 times the weight of the luminaire and its compatible shade.
- This luminaire is dimmable and has been tested at the date of publication with the dimmers listed in the specification section.

NOTE: Dimming may cause buzzing sounds or a slight flicker. There may be slight delays with the LED light start up or slight uneven light performance when more than one LED luminaire is linked together, switched ON or dimmed. This is not a product fault and as such is not covered under warranty.

NOTE: Some dimmers have a minimum load of 20W. Ensure the dimmer position is on the maximum setting before turning on the LED light and adjust the dimmer down to your desired light level.

NOTE: Testing cannot account for installation variables such as variation in mains supply voltage, cable capacitance, electrical noise, transients, surges and ripple control signals (commonly found in NSW & QLD).

NOTE: The information provided is correct to the best of Beacon Lighting's knowledge at the date of publication.

- This luminaire **MUST NOT** be covered with thermal insulation and must keep clearance from the structural members and building elements.

RISK OF FIRE – Required clearance from structural members and building elements
HCB = 10 mm, SCB = 10mm, MIC = 25mm, SCI = 25mm

- Take care not to pull any electrical wires during unpacking as this may damage the connection.
- Lay out all the components on a smooth surface and make sure there are no components missing before assembling. If parts are missing, return the complete product to the place of purchase for inspection or replacement.
- Check whether the luminaire has been damaged during transport. Do not operate/install any product which appears damaged in any way. Return the complete product to the place of purchase for inspection, repair or replacement.
- Ensure power to the circuit you are working on has been switched OFF before commencing any electrical work.

Installation Directions

Installation without dimmer accessory

ATTENTION: Switch off the mains power before installation.

Remove all packaging material from the product and be careful not to throw away accessories that may be hidden within the packaging material.

1. Cut an installation hole of \varnothing 76mm into the wall (Fig 1).
2. Loosen the three screws on the front plate and take the luminaire parts out from the mounting bracket.
3. Gently pull the supply cords through the installation hole (Fig 3).
4. Gently pull the supply cords through the mounting bracket (Fig 4).

NOTE: This is a class one product and must be maintained during installation.

5. Install the mounting bracket into the cut-out hole. Push the mounting clamps outward and tighten the screws on the mounting bracket until the mounting clamps are clamped firmly on the wall (Fig 5).
6. Connect the mains supply wire to the terminal blocks. Ensure that the wires are secure and no bare wires are exposed.

Mains Supply Wire

Earth – Yellow/Green

Neutral – Blue or Black

Live – Brown or Red

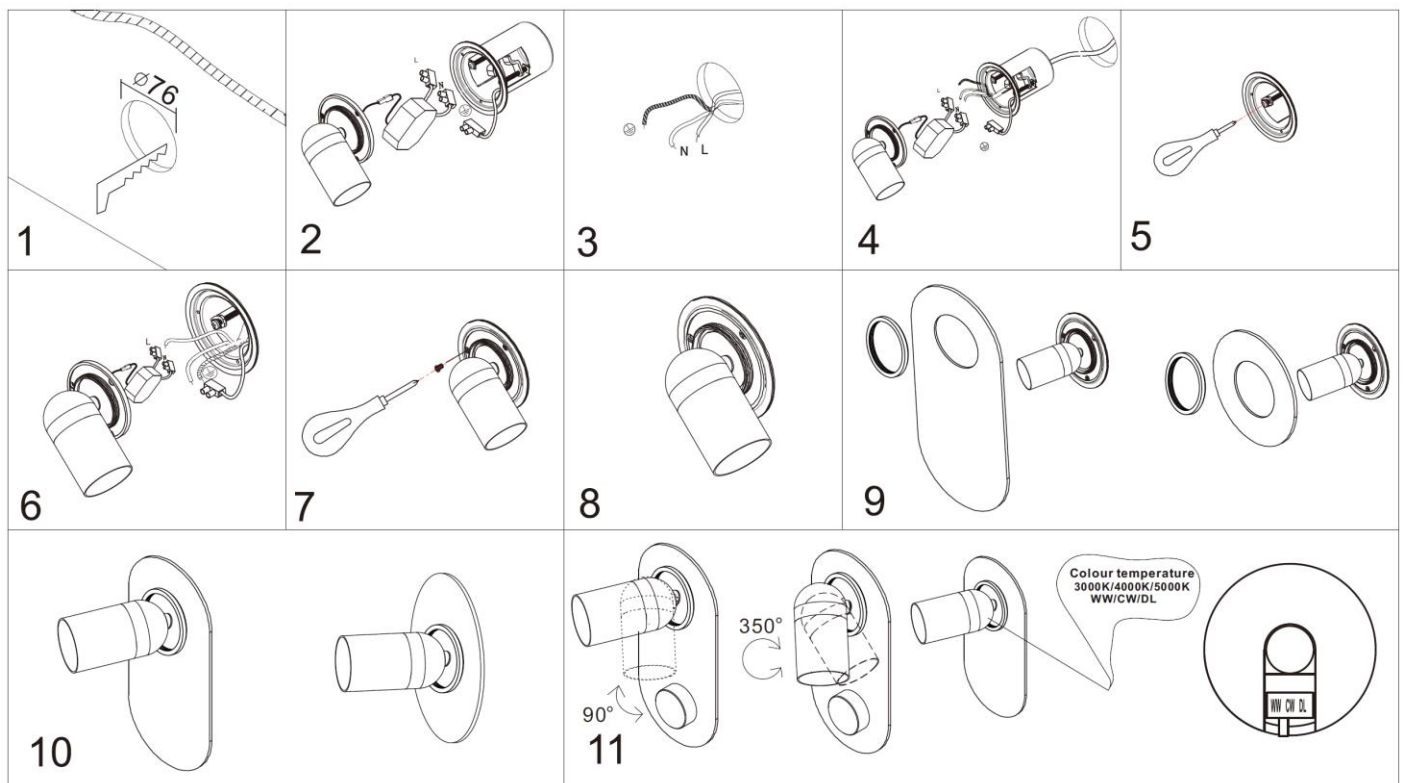
Luminaire Wire / Terminal block

Yellow/Green or

Blue or N

Brown or L

7. Put all luminaire parts back to the mounting bracket. Install the front plate back to the mounting bracket by tightening the three screws (Fig 7).
8. Install the decorative plate (Sold separately Round plate: sku# 197002, 197004, 197006, 197008, Oval plate: sku# 197003, 197005, 197007, 197009) onto the front plate then lock it by its decorative ring (Fig 9).
9. Use the toggle switch to select the desired colour temperature (3000K, 4000K, 5000K) (Fig 11).
10. After the installation, switch on the luminaire to test all the lighting functions and enjoy your new lighting product.



NOTE: Do not adjust the head more than 90° up and down, as this may damage the internal wiring.

NOTE: Do not rotate the head more than 350° ,as this may damage the internal wiring.

Installation Directions

Installation with dimmer accessory (dimmer accessory sold separately)

ATTENTION: Switch off the mains power before installation.

Remove all packaging material from the product and be careful not to throw away accessories that may be hidden within the packaging material.


1. Cut two installation holes of Ø 76mm, 140mm apart into the wall (Fig 1).
2. Loosen the three screws on the front plate and take the luminaire parts out from the mounting bracket.
3. Remove the rotary dimmer from the body/mounting fram. (Fig 3).
4. Gently pull the supply cords through the installation holes (Fig 4).
5. Gently pull the supply cords through the mounting bracket (Fig 5).

NOTE: This is a class one product and must be maintained during installation.

NOTE: The dimmer must be connected to the line side of the load. (See wiring diagram in Fig 8)

6. Install the mounting brackets into the cut-out holes. Push the mounting clamps outward and tighten the screws on the mounting bracket until the mounting clamps are clamped firmly on the wall (Fig 6).
7. Connect the mains supply wire to the terminal blocks. Use the supplied terminal block and box to connect the dimmer.

Connect the 240V~ active mains supply to the terminal block marked ACTIVE.

Connect the luminaire load to the terminal block marked .

Connect the neutral of the load to the 240V~ mains supply neutral.

Ensure that the wires are secure and no bare wires are exposed (Fig 7 & 8).


Mains Supply Wire

Earth – Yellow/Green

Neutral – Blue or Black

Live – Brown or Red

Luminaire Wire / Terminal block

Yellow/Green or 

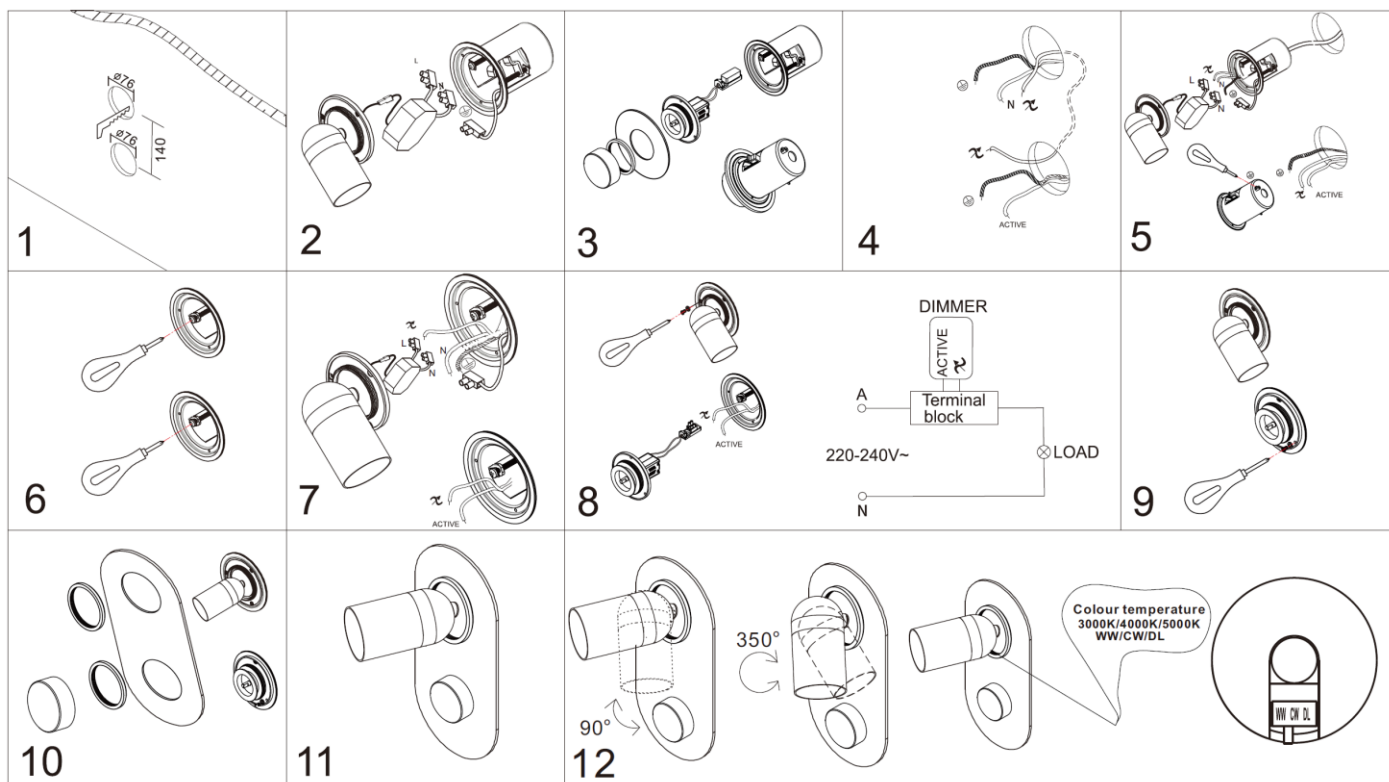
Blue or N

Brown or L

8. Put all luminaire and dimmer parts back to the mounting bracket. Install the front plate back to the mounting bracket by tightening the three screws (Fig 9).
9. Install the decorative plate (Sold separately Double Oval plate: sku# 197023, 197024, 197025, 197026) onto the front plate then lock it by its decorative ring.
10. After the installation, switch on the luminaire to test all the lighting functions and enjoy your new lighting product.

NOTE:

- **Two or more dimmer MUST NOT be connected in parallel or series to control the same load from two different locations.**
- **For operating details and additional programming options, refer to the dimmer instruction manual.**



NOTE: Do not adjust the head more than 90° up and down, as this may damage the internal wiring.

NOTE: Do not rotate the head more than 350° ,as this may damage the internal wiring.

Safety tips

- Always ensure the power is OFF and the luminaire has cooled down before performing any maintenance, cleaning or making any adjustment to the luminaire.
- The light source of this luminaire is not replaceable; when the light source reaches its end of life the whole luminaire shall be replaced.
- To avoid injury or damage to the luminaire, ensure that power leads and screws are secure before connecting the power.
- Select a suitable location away from liquids and hazards.
- Ensure that the luminaire does not come in contact with corrosive chemicals, etc.
- To clean, wipe with a damp clean cloth. Never soak the luminaire with water.

Troubleshooting		
PROBLEM	POSSIBLE CAUSE	SUGGESTED SOLUTION
Does not work. (New installation)	Wiring loose or no power to the LED fitting.	Check your circuit breaker/safety switch box and turn on power to your circuit.
		Contact the installing licensed electrician to check if the fitting has been installed correctly.
Does not work. (Existing installation)	No power to the LED fitting.	Check your circuit breaker/safety switch box and turn on power to your circuit.
		Contact your nearest Beacon Lighting store.
Flickers when dimming. (New installation)	Non-recommended dimmer used.	Check the dimmer used. Ensure the dimmer used is on the list of recommended dimmers in this manual.
	Some dimmers have a variable loading adjustment function. eg. Lucci LEDlux SKU# 290998 dimmer. This may not have been adjusted during the installation of the dimmer.	The variable resistor needs to be adjusted to suit the LED fitting load to reduce the flickering.
Flickers when dimming. (Existing installation)	Dimmer position on low.	Ensure the dimmer position is on the maximum setting before turning on the LED fitting and adjust the dimmer down to your desired light level.
Buzzing sound.	Non-recommended dimmer used.	Check the dimmer used. Ensure the dimmer used is on the list of recommended dimmers in this manual.
Uneven light start up	Dimmer position on low when switched on.	Ensure the dimmer position is on the maximum setting before turning on the LED fitting and adjust the dimmer down to your desired light level.

Specifications			
SKU #	151086		151087
Colour	WHITE		BLACK
Rated Voltage	220-240V~ 50Hz		
Rated Wattage	8.5W		
LED Specs	3000K, 600 lumen Max, CRI > 90	4000K, 650 lumen MAX, CRI > 90	5000K, 650 lumen MAX, CRI > 90
Dimmer Information	Highly Recommended Dimmers		Compatible Dimmers
	All Lucci , MFL and Buster+Punch Dimmers		DIGINET LED Smart MEDM; Clipsal 42E350RUD2M-VW, 31E2PUDM, 32E450UDM; HPM: Cat. 400TR; DETA: 6032B series 2; Trader: PMPUSWV1G
Weight	0.42kg		
Cut-out Size	Ø76mm		
Dimensions	D:84mm x H:190mm		
Compatible decorative plate	Sold separately - Round plate: sku# 197002, 197004, 197006, 197008, 197038 Oval plate: sku# 197003, 197005, 197007, 197009 Double Oval plate: sku# 197023, 197024, 197025, 197026		
Compatible dimmer accessory	Sold separately – sku# 197015, 197016, 197017, 197018		