

ECLIPSE DAY NIGHT SLEEP DOWNLIGHT (NON DIMMABLE)

SKU# 170030

Rated Voltage 220-240V~ 50Hz

Thank you for purchasing this quality Lucci product. To ensure correct function and safety, please read and follow all instructions carefully before assembly, installation and use of this luminaire. Please keep instructions for future reference.

Warranty

- This recessed luminaire is covered by a 3-year warranty valid for in-store replacement or refund only.
- The warranty period starts from the date of purchase, not the date of installation. Please retain the proof of purchase.
- The luminaire is non-dimmable. The use of dimmers may damage your recessed luminaire and will void your warranty.
- Warranty will be void if there is any damage due to improper usage or modification to the recessed luminaire.
- Failure to comply with the instructions in this manual may increase the risk of damage or injury and will void the warranty.

Installation Requirements

- Before the installation, check the installation location in the ceiling has access to a socket outlet which is connected to a wall light switch. If it does not, please contact a licensed electrician to arrange installation of the socket outlet, wall light switch before continuing.
- All wiring and installation of the recessed luminaire must adhere to the latest local and national wiring rules. eg. AS/NZS 3000 Electrical installations. If unsure, please contact a licensed electrician.
- The front cover of the LED downlight is rated IP44 only after it is fully installed. This must be maintained during installation. **NOTE: The recessed parts of the LED downlight is rated IP40.**
- Select a suitable location for installation;
 - The mounting point must support 2 times the weight of the recessed luminaire.
 - This recessed luminaire is suitable for indoor or outdoor use, provided that it is installed under cover or eaves.
- This recessed luminaire has an insulating ceiling type IC-4 rating. Building insulation material can safely be exposed continuously to temperatures up to 90°C may abut and cover the luminaire. (Please refer to the Clearance Information section and the IC-4 rating section in this instruction manual for further details.)
- If loose-fill insulation or thermal insulation is not fixed into position or if there are loose combustible materials (e.g. leaves or combustible materials stored in the roof space), a barrier or guard is required as per the Clearance Information section in this instruction manual.
- The recessed luminaire must not be used if the diffuser has been cracked or damaged.
- Take care not to pull any electrical wires during unpacking as this may damage the connection.
- Lay out all the components on a smooth surface and make sure no components are missing before assembling. If parts are missing, return the complete product to the place of purchase for inspection or replacement.
- Check whether the recessed luminaire has been damaged during transport. Do not operate/install any product which appears damaged in any way. Return the complete product to the place of purchase for inspection, repair or replacement.
- Ensure power to the circuit you are working on has been switched OFF before commencing any electrical work.

Installation Directions

1. Remove all packaging material from the product and be careful not to throw away accessories that may be hidden within the packaging material.

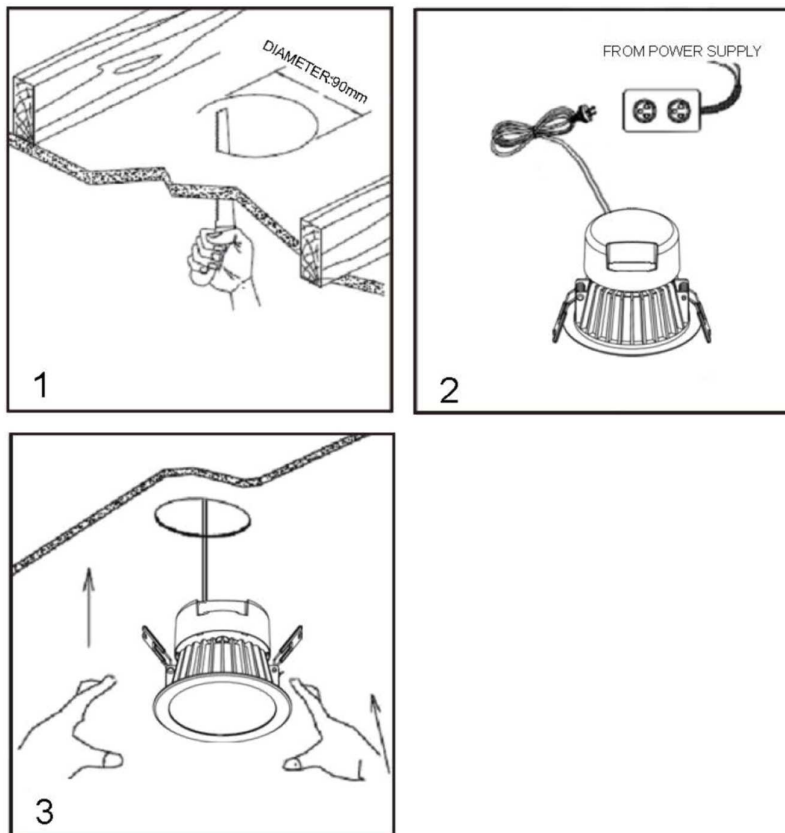
NOTE: Before installation, plug the downlight into a socket outlet to ensure it is working correctly.

Installation Instructions

2. Cut an installation hole of Ø90mm into the ceiling. (Fig. 1).
3. Insert the plug into the socket outlet and ensure it is fully plugged in. (Fig. 2)
4. Push the springs up and put the LED downlight up through the cut-out hole and into the ceiling. (Fig. 3)
5. Ensure all the clearance values are maintained during and after installation of the LED downlight, thermal insulation, loose-fill insulation, loose combustible materials and any structural members

NOTE: Please refer to the Clearance Information section and the IC-4 section in this instruction manual for further details.

6. After the installation, switch on the LED downlight to test all the lighting functions and enjoy your new LED downlight.



NOTE:

This luminaire incorporates 3 light level and colour temperature scenes known as Day, Night & Sleep.

These scenes have been specifically designed to harmonize with your day, improve energy levels and assist your body in preparing for sleep. Control is via a mechanical or relay ON/OFF switch only. This lamp is not compatible with rotary or touch button dimmer switches.

Switching cycle

Switching the lamp on / off within 2-3 seconds will cycle the lamp through the below pattern.

FIRST SWITCH 2700K 50LM – (Sleep) recommended setting for at least 2 hours before bed.

SECOND SWITCH 2700K 750LM – (Night) recommended setting 6 hours before bed.

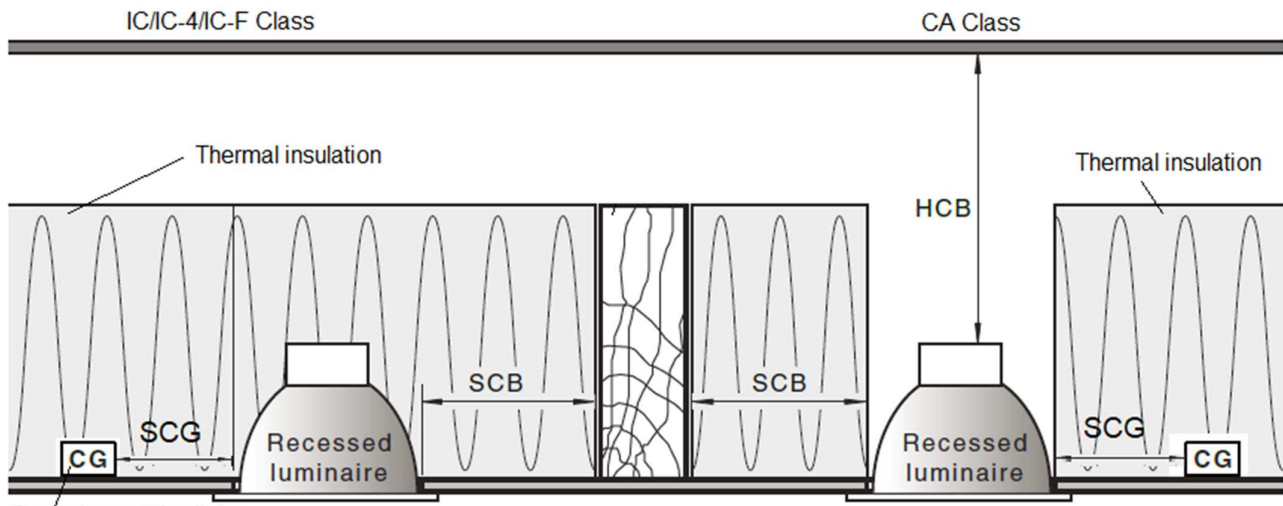
THIRD SWITCH 4000K 800LM – (Day) recommended setting at your wake and throughout the bulk of your day.

Switching twice immediately (within 1 second) will return the lamp directly to the default first switch setting - 2700K 50lm

The lamp contains a memory feature that activates after remaining on for more than 7 seconds. This will ensure the lamp returns to your last active setting.

Your downlight has been pre-set to the sleep function. Simply toggle through to reach your desired lighting.

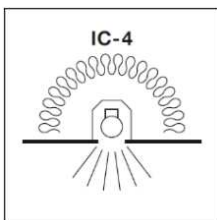
Clearance Information – AS/NZS 3000 Wiring Rules



Control gear / Auxiliary equipment driver / transformer (Control gear of this luminaire can be placed under thermal insulation)

LOCATION	DISTANCE	DESCRIPTION
HCB	N/A (Minimum)	Clearance between the top of the recessed luminaire and any combustible materials, building elements or objects above it.
SCB	0 mm (Minimum)	Clearance between the side of the recessed luminaire and any combustible materials, building elements or objects.
SCI	0 mm (Abutted)	Insulation can be abutted against the side of the recessed luminaire and covered as per IC-4 rating. See the IC-4 rating section for more details.
SCG	N/A	Auxiliary equipment/driver/transformer must be placed 100mm away from the luminaire. It can be placed under the thermal insulation and covered.

IC-4 Rating – AS/NZS 60598.2.2: 2016



1. A closed luminaire that allows building insulation to come into contact with its sides and to cover it.
2. Type IC-4 recessed luminaire can be used together with building insulation that can safely be exposed continuously to temperatures up to 90°C may abut and cover the luminaire;
3. Building elements can be abutted against the recessed luminaire.

Safety Tips

- Always ensure the power is OFF and the LED downlight has cooled down before performing any maintenance, cleaning or making any adjustment to the recessed luminaire.
- The external flexible cable or cord of this luminaire cannot be replaced; if the cable or cord is damaged, the luminaire shall be destroyed.
- The luminaire must not be used if the protective shield has been cracked. Replace any cracked protective shield before using the luminaire.
- The light source of this luminaire is not replaceable; when the light source reaches its end of life the whole luminaire shall be replaced. There are no serviceable parts, do not attempt to dismantle or open the product.
- To avoid injury or damage to the luminaire, ensure that power leads and screws are secure before connecting the power.

Installation Instructions

- Ensure that the fitting does not come in contact with corrosive chemicals/solvents or abrasive cleaners etc.
- To clean, wipe with a soft damp clean cloth. Do NOT soak or immerse the product in water or other liquids.

Specifications	
SKU #	170030
Colour	White
Rated Voltage	220-240V~ 50Hz,
Rated Wattage	9W
LED Specs	NON-Dimmable , Colour Switching (2700K-4000K), CRI > 90
Rated Lumens	2700K - 50 lumens 2700K - 750 lumens 4000K - 800 lumens
Weight	0.2kg
Cut-out Size	Ø 90mm
IP Rating	IP44 for the front cover of the LED downlight (after installation) IP40 for the back of the LED downlight (recessed parts)
Recessed Luminaire Classification	IC-4
Dimensions	H:88mm Dia:104mm