

LEDlux ISON SURFACE

SKU# 170040, 170041, 170042, 170043, 170044, 170045

Rated Voltage 220-240V~ 50Hz

Thank you for purchasing this quality Lucci product. To ensure correct function and safety, please read and follow all instructions carefully before assembly, installation and use of this product. Please keep instructions for future reference.

Warranty

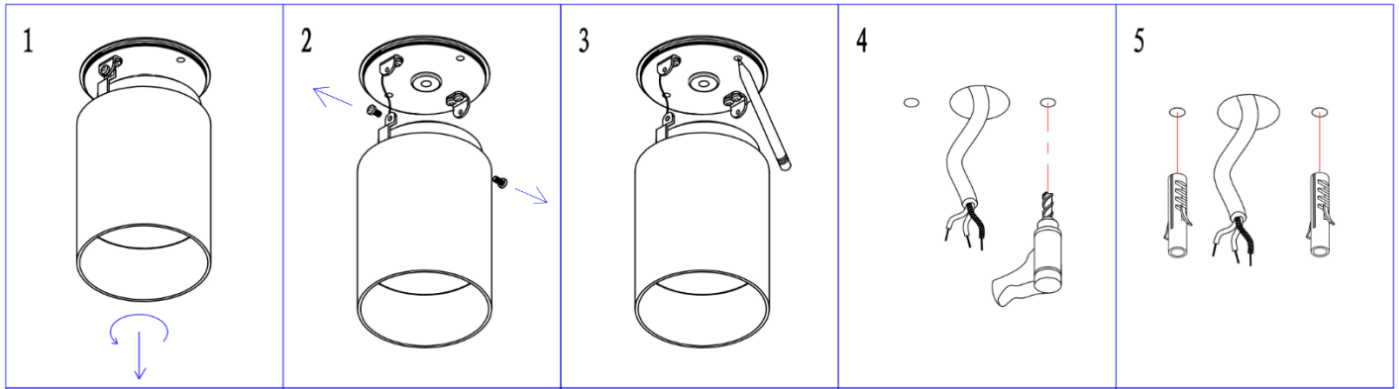
- This light fitting is covered by a 5-year warranty. The warranty is from date of purchase, not the date of installation.
- If the fitting is not installed by a licensed electrician it will void the warranty.
- Please retain proof of purchase and evidence of installation by a licensed electrician for any warranty enquiries.
- The use of non-recommended dimmers may damage your LED light fitting and will void the warranty.
- Warranty will be void if there is any damage due to improper usage or modification to the fitting.
- Failure to comply with the instructions in this manual may increase the risk of damage or injury and will void warranty.

Installation requirements

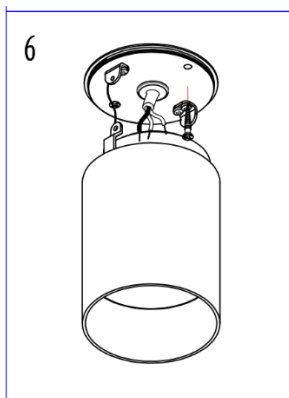
- Must be installed by a licensed electrician.
- All wiring and installation of the light fitting must adhere to local and national wiring rules.
eg. AS/NZS 3000:2007/Amendment 2:2012 Electrical installations.
- This is a Class I fitting and must be earthed during installation.
- Select a suitable location for installation;
 - This product is suitable for indoor Use.
 - This product is suitable for ceiling mount only or high location so that it is out of arm's reach.
 - mounting point must support 2 times the weight of the fitting.
 - This fitting is rated IP44 which is protected against splashes of water, this must be maintained during installation.
- This fitting is dimmable and has been tested with the Lucci LEDlux SKU# 290998, 290997, 299043 dimmer, Clipsal 31E2PUDM, PDL354RDMLLED-VW, 32E450UDM, 32E450TM, 31E2RUDM, 32ELEDM dimmers only.
NOTE: The use of non-recommended dimmers may damage your LED light fitting and will void the warranty.
NOTE: For the best dimming range use with the Lucci LEDlux dimmer SKU# 290998 and adjust the variable resistor at minimum and maximum dimming positions on the dimmer during the installation.
NOTE: Dimming may cause buzzing sounds or a slight flicker. There may be slight delays with the LED light start up or slight uneven light performance when more than one LED light fitting is linked together, switched ON or dimmed. This is not a product fault and as such is not covered under warranty.
NOTE: Some dimmers have a minimum load of 20W. Before turning on the fitting, ensure the dimmer position is on the maximum setting.
- Take care not to pull any electrical wires during unpacking as this may damage the connection.
- Lay out all the components on a smooth surface and make sure there are no components missing before assembling. If parts are missing, return the complete product to the place of purchase for inspection or replacement.
- Check whether the fitting has been damaged during transport. Do not operate/install any product which appears damaged in any way. Return the complete product to the place of purchase for inspection, repair or replacement.
- Ensure power to the circuit you are working on has been switched OFF before commencing any electrical work.

Installation directions

1. Remove all packaging material from the fitting.
2. Loosen the base from the fitting by turning it anticlockwise and pull down. (1)
3. Release the base from the fitting by loosening the screws (2), keep the safety cable between the lamp base and fitting.
4. Use the fitting's base as a template to mark the screw positions onto the ceiling (3). Drill holes into the ceiling and push plastic anchors into the holes. (4&5)




5. Install the lamp base onto the ceiling by using the mounting screws provided (6). Check and ensure that the anchors and mounting screws are suitable for the mounting surface.



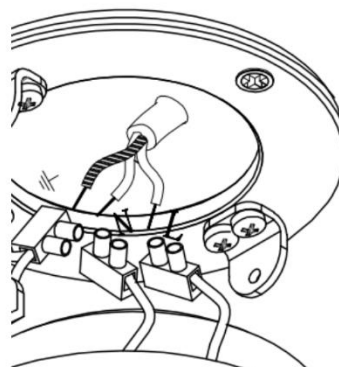
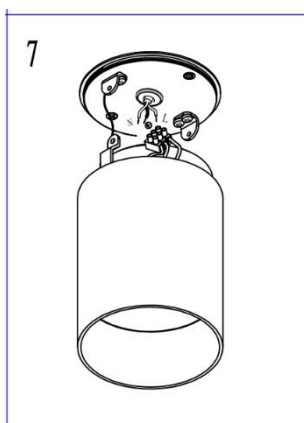
6. Connect the mains supply wire to the terminal blocks (7). Ensure that the wires are secure and no bare wires are exposed.

Mains Supply Wire

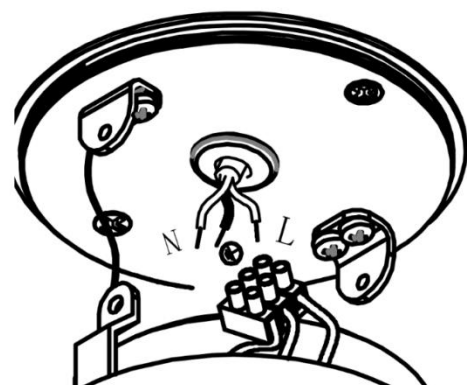
Earth – Yellow/Green 
 Neutral – Blue or Black
 Live – Brown or Red

Fitting Wire

Yellow/Green
 Blue
 Brown

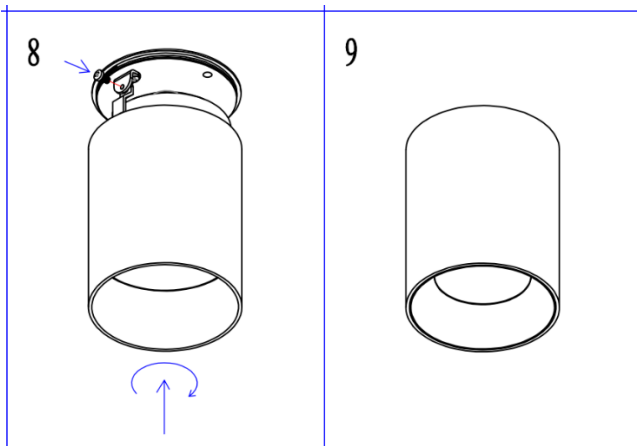


7a-sku170040, 170041, 170042



7b --sku170043, 170044, 170045

7. Install the lamp body onto the lamp base – re-lock the screws (8), pull up and turning the lamp body onto lamp base by Clockwise(8&9)



8. After the installation is complete, switch on the luminaire to test and enjoy your new lighting product.
9. To operate the colour shifting function, use the wall switch.
- While the luminaire is on, toggle the wall switch OFF and ON again within 3 seconds.
The colour shifting sequence will jump from 3000K → 5000K → 4000K.
 - For the colour shifting to memorise the colour temperature, leave the wall switch OFF for over 7 seconds.
 - To reset the colour shifting, toggle the wall switch OFF and ON twice within 1 second.

Safety tips

- Always ensure the power is OFF and the fitting has cooled down before performing any maintenance, cleaning or making any adjustment to the fitting.
- To avoid injury or damage to the fitting, ensure that power leads and screws are secure before connecting the power.
- Ensure that the fitting does not come in contact with corrosive chemicals, etc.
- To clean, wipe with a damp clean cloth. Never soak the fitting with water.
- Handle the fitting and cover/shade with care to avoid breakage.

Specifications

SKU #	170040, 170041, 170042	170043, 170044, 170045
Insulation Class	Class I	
Rated Voltage	220-240V~ 50Hz	
Rated Wattage	12W	
LEDs	3000K,4000K,5000K 800lm	
Weight	0.55kg	0.65kg
Dimensions	D:80 H:100mm	D:80 H:150mm
IP Rating	IP44	