

ISON SURFACE MOUNT DOWNLIGHT

SKU# 170040, 170041, 170042, 170043, 170044, 170045, 178298, 178299

Rated Voltage 220-240V~ 50Hz

To ensure correct function and safety, please read and follow all instructions carefully before assembly, installation and use of this product. Please keep instructions for future reference.

Warranty

- This light fitting is covered by a 5-year warranty. The warranty is from date of purchase, not the date of installation.
- If the fitting is not installed by a licensed electrician it will void the warranty.
- Please retain proof of purchase and evidence of installation by a licensed electrician for any warranty enquiries.
- The use of non-recommended dimmers may damage your LED light fitting and will void the warranty.
- Warranty will be void if there is any damage due to improper usage or modification to the fitting.
- Failure to comply with the instructions in this manual may increase the risk of damage or injury and will void warranty.

Installation requirements

- Must be installed by a licensed electrician.
- All wiring and installation of the light fitting must adhere to local and national wiring rules. eg. AS/NZS 3000:2007/Amendment 2:2012 Electrical installations.
- This is a Class I fitting and must be earthed during installation.
- Select a suitable location for installation;
 - This product is suitable for ceiling mount only or high location so that it is out of arm's reach.
 - mounting point must support 2 times the weight of the fitting.
 - This fitting is rated IP44 which is protected against splashes of water, this must be maintained during installation.
- The colour shifting function is designed to operate with a mechanical or relay ON/OFF switch, as well as selected semi-conductor ON/OFF switches, such as MFL Artisan or Lucci Power Dimmers with ON/OFF functionality. Please note the colour shifting function may not operate correctly on all semi-conductor switches.
- This luminaire is dimmable and the use of an LED dimmer is strongly recommended. Please see **Highly Recommended Dimmers** Section of the Specifications on Page 4 for a list of SKUs that have been specifically designed & tested for use with this luminaire.

NOTE: Dimming may cause buzzing sounds or a slight flicker. There may be slight delays with the LED luminaire start-up or uneven light performance when more than one LED luminaire is linked together, switched ON or dimmed. This is not a product fault and as such is not covered under warranty.

NOTE: Some dimmers have a minimum load of 20W. Ensure the dimmer position is on the maximum setting before turning on the LED light and adjust the dimmer down to your desired light level.

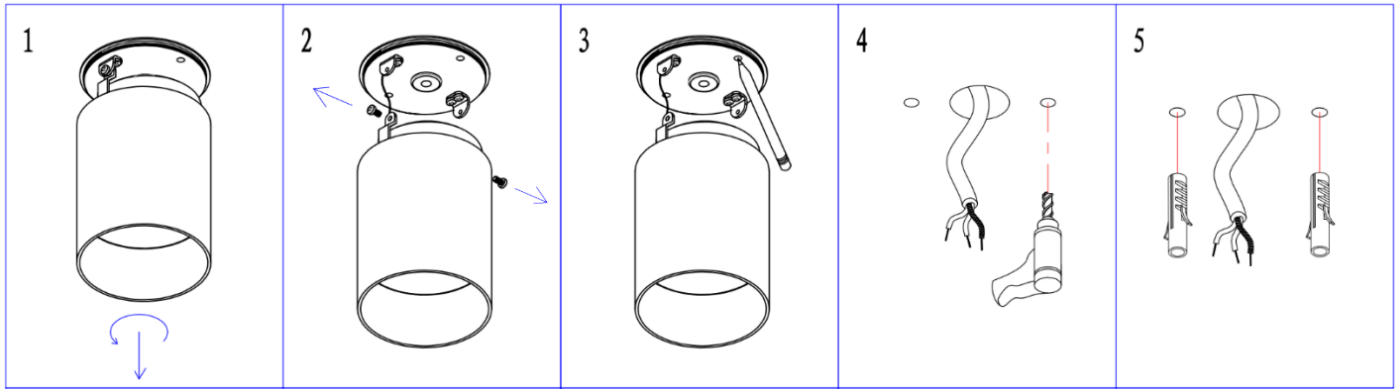
NOTE: Testing cannot account for installation variables such as variation in mains supply voltage, cable capacitance, electrical noise, transients, surges and ripple control signals (commonly found in NSW & QLD).

NOTE: The information provided is correct to the best of Beacon Lighting's knowledge at the date of publication.

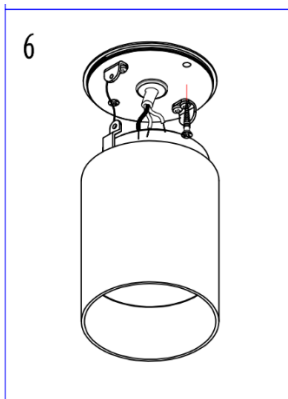
- Take care not to pull any electrical wires during unpacking as this may damage the connection.
- Lay out all the components on a smooth surface and make sure no components are missing before assembling. If parts are missing, return the complete product to the place of purchase for inspection or replacement.
- Check whether the fitting has been damaged during transport. Do not operate/install any product which appears damaged in any way. Return the complete product to the place of purchase for inspection, repair or replacement.
- Ensure power to the circuit you are working on has been switched OFF before commencing any electrical work.

Installation directions

1. Remove all packaging material from the fitting.
2. Loosen the base from the fitting by turning it anticlockwise and pull down. (1)
3. Release the base from the fitting by loosening the screws (2), keep the safety cable between the lamp base and fitting.
4. Use the fitting's base as a template to mark the screw positions onto the ceiling (3). Drill holes into the ceiling and push plastic anchors into the holes. (4&5)




5. Install the lamp base onto the ceiling by using the mounting screws provided (6). Check and ensure that the anchors and mounting screws are suitable for the mounting surface.



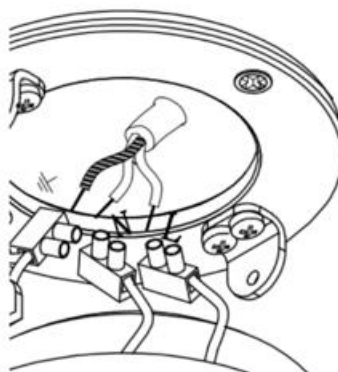
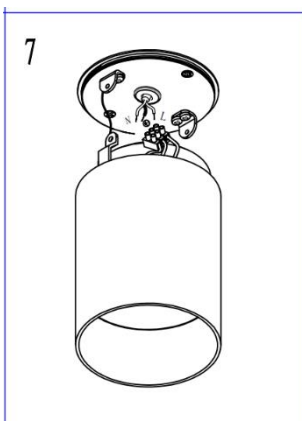
6. Connect the mains supply wire to the terminal blocks (7). Ensure that the wires are secure and no bare wires are exposed.

Mains Supply Wire

Earth – Yellow/Green 
 Neutral – Blue or Black
 Live – Brown or Red

Fitting Wire

Yellow/Green
 Blue
 Brown

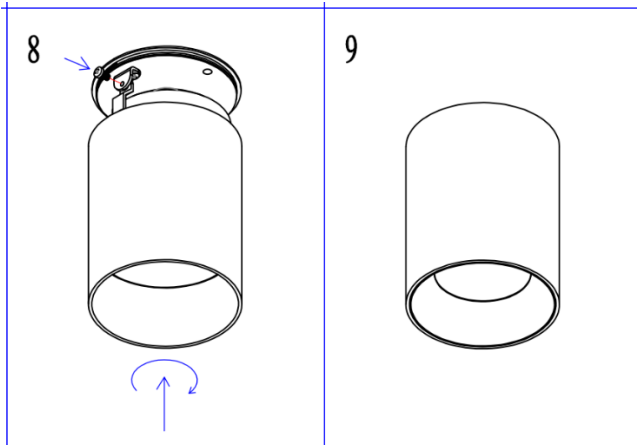


7a-sku170040, 170041, 170042 , 178298



7b -sku170043, 170044, 170045 , 178298

7. Install the lamp body onto the lamp base – re-lock the screws (8), pull up and turning the lamp body onto lamp base by Clockwise (8&9)



8. After the installation is complete, switch on the luminaire to test and enjoy your new lighting product.

This product has a colour switching function (3000K / 4000K / 5000K):

NOTE: If the luminaire is installed with dimmer, it is recommended to turn the dimmer to the highest position before adjusting the colour temperature as below.

- Turn on the luminaire for the first time; the luminaire will switch to colour temperature 3000K.
- Turn off the luminaire, then turn it on again within 3 seconds; the luminaire will switch to colour temperature 5000K.
- Turn off the luminaire, then turn it on again within 3 seconds; the luminaire will switch to colour temperature 4000K.
- If the luminaire is turned off for more than 7 seconds, it will keep the same colour temperature as it was last on.
- The colour temperature will reset to 3000K if the switch is turn on/off quickly twice within 1 second.

NOTE: If using an MFL Artisan or Lucci Power Dimmer, please see the Dimmer Installation Manual for instructions on how to operate the colour shifting functions correctly.

Safety tips

- Always ensure the power is OFF and the fitting has cooled down before performing any maintenance, cleaning or making any adjustment to the fitting.
- To avoid injury or damage to the fitting, ensure that power leads and screws are secure before connecting the power.
- Ensure that the fitting does not come in contact with corrosive chemicals, etc.
- To clean, wipe with a damp clean cloth. Never soak the fitting with water.
- Handle the fitting and cover/shade with care to avoid breakage.
- The light source contained in this luminaire shall only be replaced by the manufacturer or his service agent or a similar qualified person.

Specifications		
SKU #	170040, 170041, 170042, 178298	170043, 170044, 170045, 178299
Insulation Class	Class I	
Rated Voltage	220-240V~ 50Hz	
Rated Wattage	12W	
LED Specs	Colour shifting (3000K-4000K-5000K) LEDs*, Dimmable, CRI>90	
Rated Lumens	800 lumens Max.	
Highly Recommended Dimmers	Lucci Power SKU# 290989, 290992, 290993, 290994. MFL Artisan SKU# 197015, 197016, 197017, 197018. Buster + Punch DIM-002	
Compatible Dimmers	Clipsal 31E2RUDM, 31E2PUDM, 32E450UDM, DIGINET LED Smart MEDM, HPM Cat. 400T	
Weight	0.55kg	0.65kg
Dimensions	D:80 H:100mm	D:80 H:150mm
IP Rating	IP44	

* The colour shifting function is designed to operate with a mechanical or relay ON/OFF switch, as well as selected semi-conductor ON/OFF switches, such as MFL Artisan or Lucci Power Dimmers with ON/OFF functionality outlined above. Please note the colour shifting function may not operate correctly on all semi-conductor switches.