

ECLIPSE MAXI COLOUR SHIFTING DOWNLIGHT

SKU# 170065, 178271

Rated Voltage 220-240V~ 50Hz

To ensure correct function and safety, please read and follow all instructions carefully before assembly, installation and use of this luminaire. Please keep instructions for future reference.

Warranty

- This recessed luminaire is covered by a 5-year warranty valid for in-store replacement or refund only.
- The warranty period starts from the date of purchase, not the date of installation. Please retain the proof of purchase.
- The use of non-compatible dimmers may damage your recessed luminaire and will void your warranty.
- Warranty will be void if there is any damage due to improper usage or modification to the recessed luminaire.
- Failure to comply with the instructions in this manual may increase the risk of damage or injury and will void the warranty.

Installation Requirements

- Before the installation, check the installation location in the ceiling has access to a socket outlet which is connected to a wall light switch and dimmer. If it does not, please contact a licensed electrician to arrange installation of the socket outlet, wall light switch and dimmer before continuing.
- All wiring and installation of the recessed luminaire must adhere to latest local and national wiring rules. eg. AS/NZS 3000 Electrical installations. If unsure, please contact a licensed electrician.
- The front cover of the recessed downlight is rated IP44 only after it is fully installed. This must be maintained during installation. **NOTE: The recessed parts of the recessed downlight is rated IP40.**
- Select a suitable location for installation;
 - The mounting point must support 2 times the weight of the recessed luminaire.
 - This recessed luminaire is suitable for indoor or outdoor use, provided that it is installed under cover or under eaves.
- This luminaire is dimmable and was tested with the dimmers listed in the specification table at the date of publication. The use of a LED dimmer is strongly recommended. Please see **Highly Recommended Dimmers** Section of the Specifications on Page 5 for a list of SKUs that have been specifically designed & tested for use with this luminaire. **NOTE:** Dimming may cause buzzing sounds or a slight flicker. There may be slight delays with the LED light start up or slight uneven light performance when more than one LED light fitting is linked together, switched ON or dimmed. This is not a product fault and as such is not covered under warranty. **NOTE:** Some dimmers have a minimum load of 20W. Ensure the dimmer position is on the maximum setting before turning on the LED light and adjust the dimmer down to your desired light level. **NOTE:** Testing cannot account for installation variables such as variation in mains supply voltage, cable capacitance, electrical noise, transients, surges and ripple control signals (commonly found in NSW & QLD). **NOTE:** The information provided is correct to the best of Beacon Lighting's knowledge at the date of publication.
- This recessed luminaire has an insulating ceiling type IC-4 rating. Building insulation material can safely be exposed continuously to temperatures up to 90°C may abut and cover the luminaire. (Please refer to the Clearance Information section and the IC-4 rating section in this instruction manual for further details.)
- If loose fill insulation or thermal insulation is not fixed into position or if there are loose combustible materials (e.g. leaves or combustible materials stored in the roof space), a barrier or guard is required as per the Clearance Information section in this instruction manual.
- The recessed luminaire must not be used if the diffuser has been cracked or damaged.
- Take care not to pull any electrical wires during unpacking as this may damage the connection.

- Lay out all the components on a smooth surface and make sure no components are missing before assembling. If parts are missing, return the complete product to the place of purchase for inspection or replacement.
- Check whether the luminaire has been damaged during transport. Do not operate/install any product which appears damaged in any way. Return the complete product to the place of purchase for inspection, repair or replacement.
- Ensure power to the circuit you are working on has been switched OFF before commencing any electrical work.

Installation Directions

1. Remove all packaging material from the product and be careful not to throw away accessories that may be hidden within the packaging material.

NOTE: Before installation, plug the recessed luminaire into a socket outlet to ensure it is working correctly.

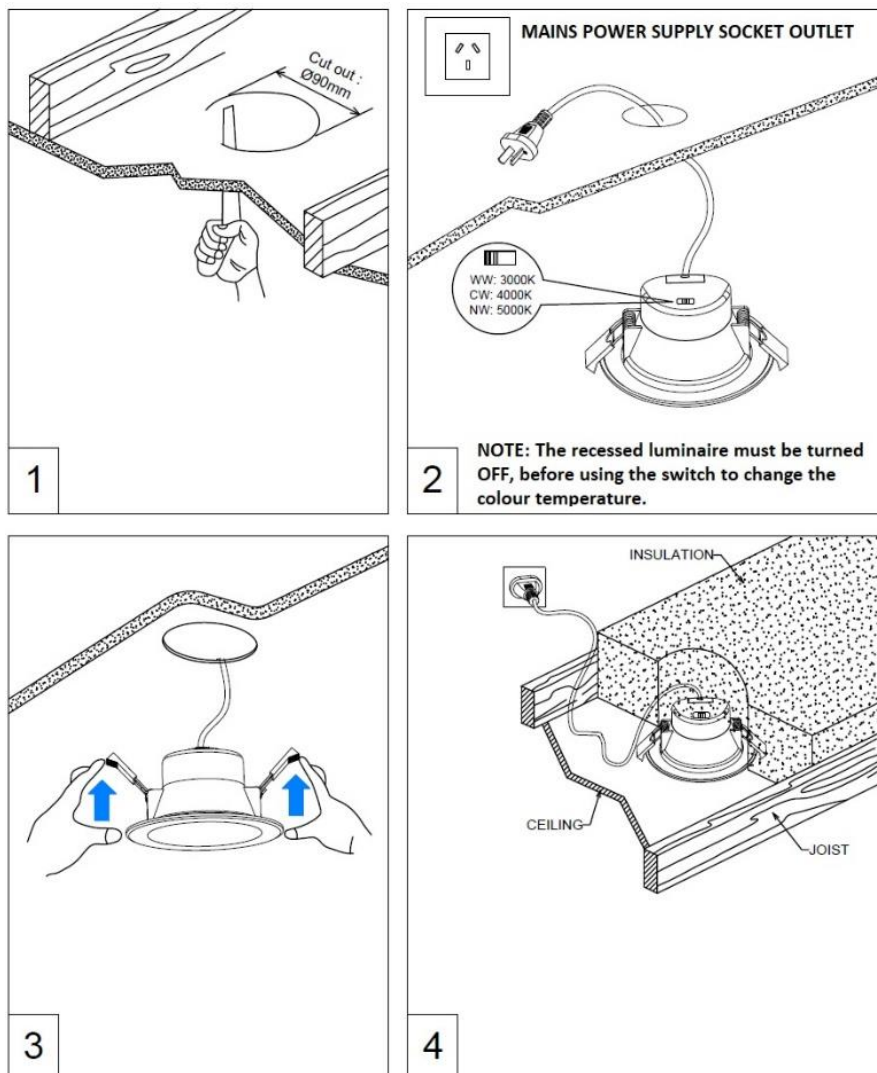
2. Select the colour temperature via the switch on the back of the recessed luminaire. (Fig. 2)

NOTE: The recessed luminaire must be turned off before using the switch to change the colour temperature.

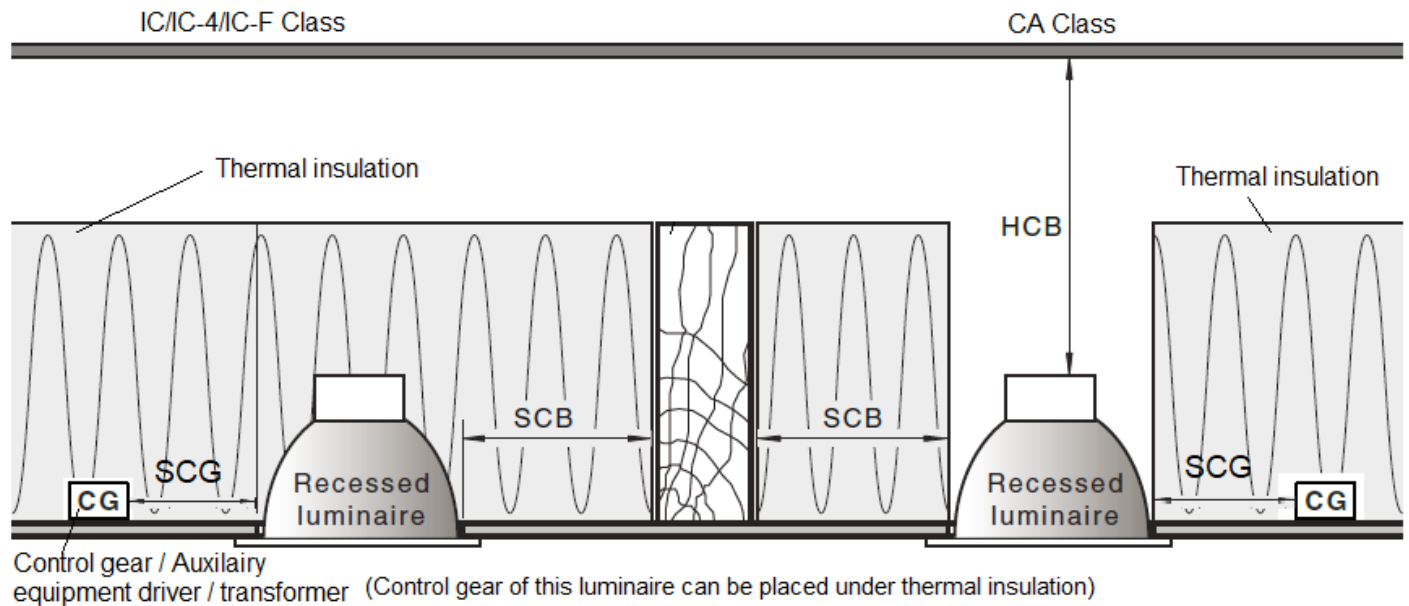
3. Cut an installation hole of Ø90mm into the ceiling. (Fig. 1).
4. Insert the plug into the socket outlet and ensure it is fully plugged in. (Fig. 2)
5. Push the springs up and put the recessed luminaire up through the cut-out hole and into the ceiling. (Fig. 3)
6. Ensure all the clearance values are maintained during and after installation of the recessed luminaire, thermal insulation, loose fill insulation, loose combustible materials and any structural members. (Fig. 4)

NOTE: Please refer to the Clearance Information section and the IC-4 section in this instruction manual for further details.

7. After the installation, switch on the luminaire on to test all the lighting functions and enjoy your new luminaire.

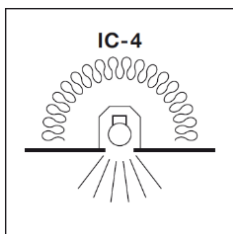


Clearance Information – AS/NZS 3000 Wiring Rules



LOCATION	DISTANCE	DESCRIPTION
HCB	0mm	Minimum distance between the top of the recessed luminaire and any building element above it.
MIC	0mm	Minimum distance between the top of the recessed luminaire and the building insulation above it.
SCB	0mm	Minimum distance between the side of the recessed luminaire and any building element as specified in AS/NZS 3000.
SCI	0mm (Abutted)	Minimum distance between the recessed luminaire and any building insulation. Insulation can be abutted against the side of recessed luminaire and covered as per IC-4 Rating. See IC-4 Rating section for more details.
SCG	100mm	Auxiliary equipment/driver/transformer must be placed 100mm away from the luminaire. It can be placed under the thermal insulation and covered.

IC-4 Rating – AS/NZS 60598.2.2: 2016



A recessed luminaire that can be abutted against normally flammable materials, including building insulation, and can be covered in normal use. Building elements and building insulation to the heated parts of the luminaire. This classification of recessed luminaire is effectively a sealed unit that has a restricted flow of air between the habitable room the luminaire emits light into and the void/space where the main body of the luminaire is located.

- A closed luminaire that allows building insulation to come into contact with its sides and to cover it.
- Type IC-4 recessed luminaire can be used together with building insulation that can safely be exposed continuously to temperatures up to 90°C may abut and cover the luminaire.
- The declared IC-4 rating is based on the default testing ambient temperatures 25°C according to the standard.

RISK OF FIRE – REQUIRED CLEARANCE FROM STRUCTURAL MEMBERS AND BUILDING ELEMENTS
 HCB=0 mm MIC=0mm SCB=0mm SCI=0mm

Safety Tips

- Always ensure the power is OFF and the recessed luminaire has cooled down before performing any maintenance, cleaning or making any adjustment to the recessed luminaire.
- If the external flexible cable or cord of this luminaire is damaged, it shall be exclusively replaced by the manufacturer or his service agent or a similar qualified person in order to avoid a hazard.
- The recessed luminaire must not be used if the diffuser/protective shield has been cracked or damaged.
- The light source of this luminaire is not replaceable; when the light source reaches its end of life the whole luminaire shall be replaced. There are no serviceable parts, do not attempt to dismantle or open the product.
- To avoid injury or damage to the luminaire, ensure that power leads and screws are secure before connecting the power.
- Ensure the recessed luminaire does not come in contact with corrosive chemicals/solvents or abrasive cleaners etc.
- To clean, wipe with a soft damp clean cloth. Do NOT soak or immerse the product in water or other liquids.

Specifications v2.0

SKU #	170065	178271
Colour	White	Black
Rated Voltage	220-240V~ 50Hz	
Rated Wattage	8W	
LED Specs	Shineon LEDs, Dimmable, Colour Switching, CRI ≥ 80	
Rated Lumens	3000K - 750 lumens 4000K - 850 lumens 5000K - 800 lumens	
Highly Recommended Dimmers	Lucci Power: SKU# 290989, 290992, 290993, 290994. MFL Artisan: SKU# 197015, 197016, 197017, 197018. Lucci LEDlux: SKU# 290997. Lucci Connect: SKU# 299043. Buster + Punch: DIM-002.	
Compatible Dimmers	Clipsal: 31E2PUDM, 31E2RUDM, 32E450UDM. DIGINET: LED Smart MEDM. HPM: Cat. 400T	
Weight	0.2kg	
Cut-out Size	Ø 90mm	
IP Rating	IP44 for the front cover of the LED downlight (after installation) IP40 for the back of the LED downlight (recessed parts)	
Recessed Luminaire Classification	IC-4	
Dimensions	H:58mm Dia:115mm	