

HARLO LED CCT ADJUST SURFACE MOUNT

SKU# 177002, 177003

Rated Voltage 220-240V~ 50Hz

To ensure correct function and safety, please read and follow all instructions carefully before assembly, installation and use of this product. Please keep instructions for future reference.

Warranty

- This luminaire is covered by a 5-year warranty. The warranty is from the date of purchase, not the date of installation.
- If the luminaire is not assembled and installed by a licensed electrician, the warranty will be void.
- Please retain the proof of purchase and evidence of installation by a licensed electrician for any warranty enquiries.
- Warranty will be void if there is any damage due to improper usage or modification to the luminaire.
- Failure to comply with the instructions in this manual may increase the risk of damage or injury and will void the warranty.

Installation Requirements

- This luminaire must be assembled and installed by a licensed electrician.
- All wiring and installation of the luminaire must adhere to the latest local and national wiring rules.

E.g. AS/NZS 3000 Electrical Installations.

- This luminaire is a Class I product and must be earthed during wiring and installation.
- Do not exceed the maximum wattage rating.
- Select a suitable location for installation:
 - This luminaire is suitable for indoor use only.
 - The mounting point must support 2 times the weight of the luminaire.
 - If installing a luminaire in an area prone to moisture, ensure that the area is well ventilated, and an appropriately rated exhaust fan is used if required. Damage or corrosion caused by moisture is not a product fault, and as such is not covered under warranty.
- When the toggle switch on the luminaire is at WC location, to operate the colour shifting function by wall switch. The colour shifting function is designed to operate with a mechanical or relay ON/OFF switch, as well as selected semi-conductor ON/OFF switches, such as MFL Artisan or Lucci Power Dimmers with ON/OFF functionality. Please note the colour shifting function may not operate correctly on all semi-conductor switches.
- This luminaire is dimmable and the use of an LED dimmer is strongly recommended. Please see **Highly Recommended Dimmers** Section of the Specifications on Page 5 for a list of SKUs that have been specifically designed & tested for use with this luminaire.

NOTE: Dimming may cause buzzing sounds or a slight flicker. There may be slight delays with the LED luminaire start-up or uneven light performance when more than one LED luminaire is linked together, switched ON or dimmed. This is not a product fault and as such is not covered under warranty.

NOTE: Some dimmers have a minimum load of 20W. Ensure the dimmer position is on the maximum setting before turning on the LED light and adjust the dimmer down to your desired light level.

NOTE: Testing cannot account for installation variables such as variation in mains supply voltage, cable capacitance, electrical noise, transients, surges and ripple control signals (commonly found in NSW & QLD).

- Take care not to pull any electrical wires during unpacking as this may damage the connection.
- Lay out all the components on a smooth surface and make sure no components are missing before assembling. If parts are missing, return the complete product to the place of purchase for inspection or replacement.
- Check whether the luminaire has been damaged during transport. Do not operate/install any product which appears damaged in any way. Return the complete product to the place of purchase for inspection, repair or replacement.
- Ensure power to the circuit you are working on has been switched OFF before commencing any electrical work.

Installation Directions

1. Remove all packaging material from the product and be careful not to throw away accessories that may be hidden within the packaging material. If assembly is required, place the luminaire on a smooth non-scratch surface.
2. Remove the mounting bracket from the luminaire body by loosening the screws on both sides and disconnecting the quick connector plug. Figure 1.
3. Use the mounting bracket as a template to mark the screw positions on the installation point. Figure 2.
4. Install the mounting bracket onto the installation point by using appropriately sized mounting screws and anchors. Ensure the screws and anchors used are suitable for the mounting surface and the surrounding environment. Figure 2.
5. Connect the mains supply wire to the terminal block on the mounting bracket. Figure 3.


Mains Supply Wire

Earth – Yellow/Green 

Neutral – Blue or Black

Live – Brown or Red

Luminaire Wire / Terminal Block

Yellow/Green or 

Blue

Brown

Ensure the wires are secure and no bare wires are exposed.

NOTE: The luminaire is a Class I product and must be earthed during wiring and installation.

6. Install the luminaire body back onto the mounting bracket by connecting the quick connector plug and tightening the screws on both sides. Figure 4.
7. Rotate horizontally the luminaire arm and adjust vertically the luminaire shade to your desired angle. Figure 5.

NOTES FOR ARM AND SHADE ADJUSTMENT: To avoid and damage to the joints or internal wiring, please do not adjust the arm or shade beyond the angles listed:

Maximum rotation angle of the arm: no more than 180° right to left.

Maximum tilt angle of shade: no more than 90° up and down.

8. After the installation, switch on the luminaire to test and enjoy your new lighting product.
9. Use the toggle switch on the luminaire to select the colour temperature – DL or CW or WW or WC. Figure 6.

DL --- Daylight 5000K

CW --- Cool White 4000K

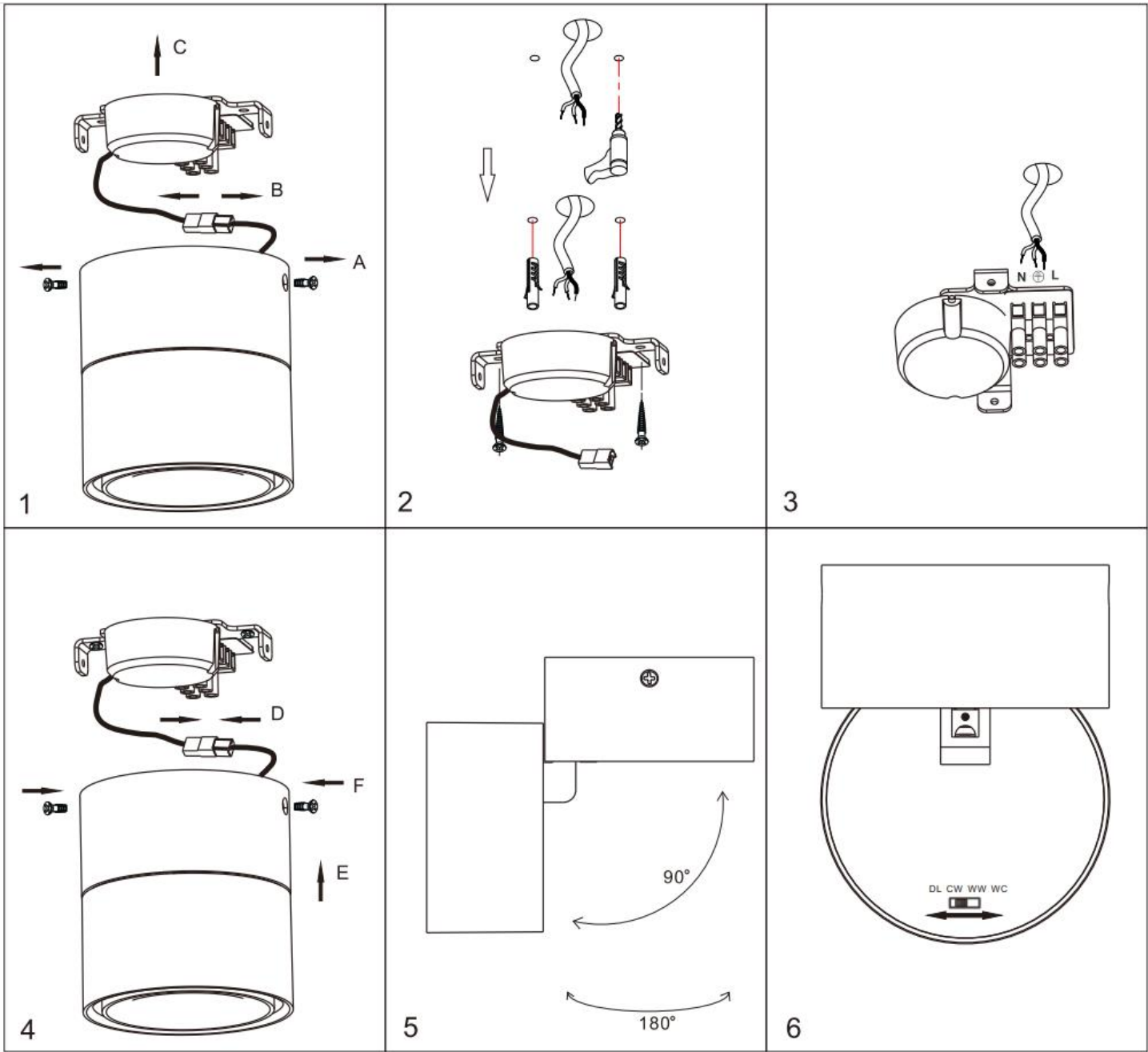
WW --- Warm White 3000K

WC ---- Wall Control

When the toggle switch on the luminaire is switched to WC location, to operate the colour shifting function, use the wall switch.

- While the luminaire is on, toggle the wall switch OFF and ON again within 3 seconds. The colour shifting sequence will jump from 3000K → 5000K → 4000K.
- For the colour shifting to memorise the colour temperature, leave the wall switch OFF for over 7 seconds.
- To reset the colour shifting, toggle the wall switch OFF and ON twice within 1 second.

NOTE: If using an MFL Artisan or Lucci Power Dimmer, please see the Dimmer Installation Manual for instructions on how to operate the colour shifting functions correctly.



Troubleshooting		
PROBLEM	POSSIBLE CAUSE	SUGGESTED SOLUTION
Does not work. (New installation)	Loose wiring or no power to the luminaire.	Check your circuit breaker/safety switch box and turn on the power to your circuit.
		Contact the installing licensed electrician to check if the luminaire has been installed correctly.
Does not work. (Existing installation)	No power to the luminaire.	Check your circuit breaker/safety switch box and turn on the power to your circuit.
		Contact your nearest Beacon Lighting store.
Flickers when dimming. (New installation)	Non-recommended dimmer used.	Check the dimmer used. Ensure the dimmer used is on the list of recommended dimmers in this manual.
	Some dimmers have a variable loading adjustment function This may not have been adjusted during the installation of the dimmer.	The variable resistor needs to be adjusted to suit the luminaire load to reduce the flickering.
Flickers when dimming. (Existing installation)	Dimmer position on low.	Ensure the dimmer position is on the maximum setting before turning on the luminaire and adjust the dimmer down to your desired light level.
Buzzing sound.	Non-recommended dimmer used.	Check the dimmer used. Ensure the dimmer used is on the list of recommended dimmers in this manual.
Uneven light on start-up	Dimmer position on low when switched on.	Ensure the dimmer position is on the maximum setting before turning on the luminaire and adjust the dimmer down to your desired light level.

Safety Tips

- Always ensure the power is OFF and the luminaire has cooled down before performing any maintenance, cleaning or making any adjustment to the luminaire.
- To avoid injury or damage to the luminaire, ensure that power leads and screws are secure before connecting the power.
- Select a suitable location away from liquids and hazards.
- To clean, wipe with a soft damp cloth. Do NOT soak or immerse the luminaire in water or other liquids.
- Ensure that the luminaire does not come in contact with corrosive chemicals/solvents or abrasive cleaners etc.
- The light source of this luminaire is not replaceable; when the light source reaches its end of life, the whole luminaire shall be replaced. There are no serviceable parts, do not attempt to dismantle or open the product.

Specifications		
SKU #	177002	177003
Colour	White	Black
Rated Voltage	220-240V~ 50Hz	
Rated Wattage	12W	
LED Specs	Colour shifting LEDs*, Dimmable, CRI>90	
Colour Temperature and Lumens	3000K – 800 lumens 5000K – 850 lumens 4000K – 850 lumens	
Highly Recommended Dimmers	MFL Artisan SKU# 197015, 197016, 197017, 197018, Lucci Power SKU# 290989, 290992, 290993, 290994, BUSTER+ PUNCH: DIM-002	
Compatible Dimmers	Lucci LEDlux SKU# 290997, Clipsal 31E2RUDM, 31E2PUDM, 32E450UDM, DIGINET LED Smart MEDM, HPM Cat. 400T	
Weight	0.75kg	
Luminaire Dimensions	H:105mm Dia:100mm	

*Use the toggle switch on the luminaire to select the colour temperature - 5000K or 4000K or 3000K or Wall control.