

MFL PINGO GU10 DOWNLIGHT

SKU# 177020, 177021

Rated Voltage 220-240V~ 50Hz

Thank you for purchasing this quality MFL product. To ensure correct function and safety, please read and follow all instructions carefully before assembly, installation and use of this downlight. Please keep instructions for future reference.

Warranty

- This downlight is covered by a 5 year warranty valid for in-store replacement or refund only. The warranty is from date of purchase, not the date of installation. Please retain proof of purchase.
- Warranty will be void if there is any damage due to improper usage or modification to the downlight.
- Failure to comply with the instructions in this manual may increase the risk of damage or injury and will void warranty.

Installation Requirements

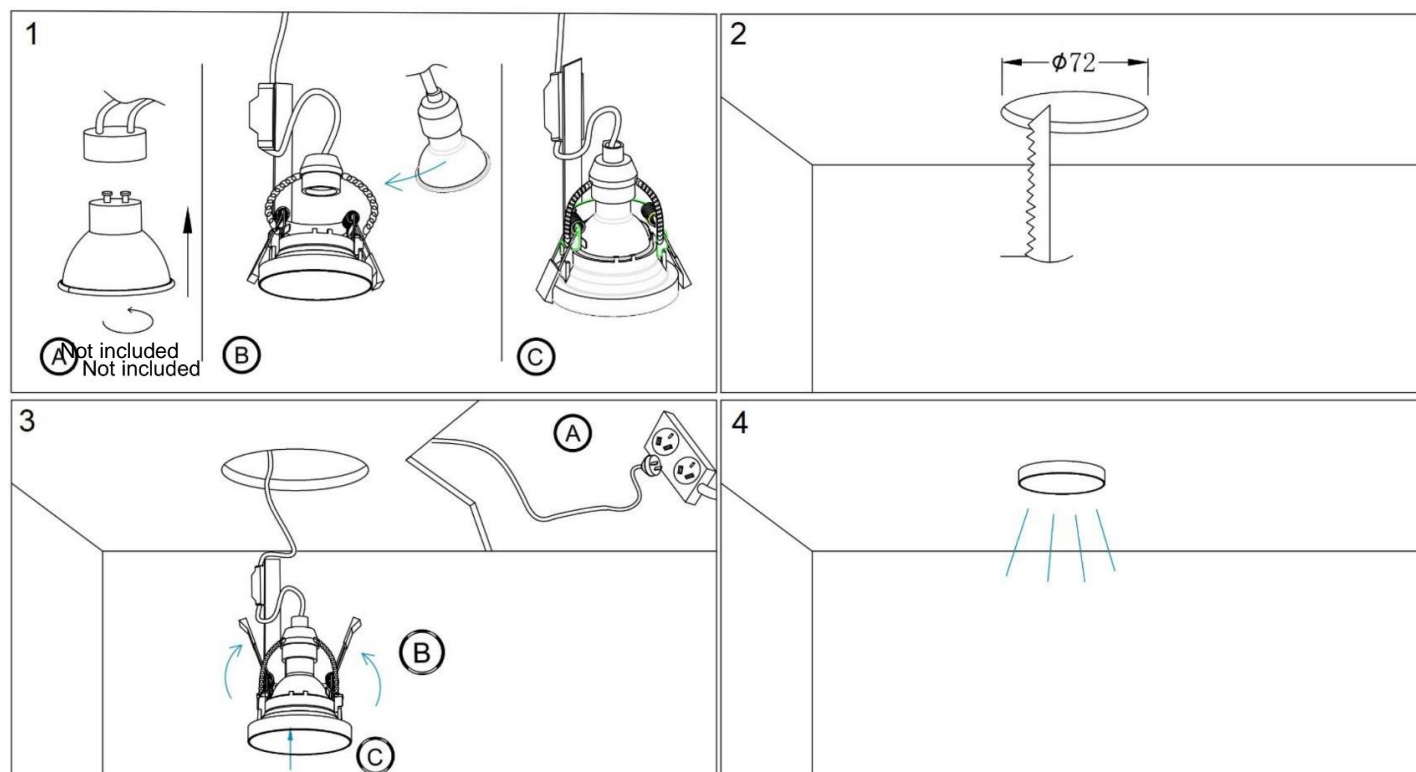
- Before installation, check the installation location in the ceiling has access to a socket outlet which is connected to a wall light switch. If it does not, please contact a licensed electrician to arrange installation of the socket outlet and wall light switch before continuing
- All wiring and installation of the downlight must adhere to latest local and national wiring rules. eg. AS/NZS 3000 Electrical installations. If unsure, please contact a licensed electrician.
- This is a Class II product, this must be maintained during the installation.
- Select a suitable location for installation:
 - This downlight is suitable for indoor use only.
 - The mounting point must support 2 times the weight of the downlight.
 - If installing a downlight in an area prone to moisture, ensure that the area is well ventilated and an appropriately rated exhaust fan is used if required. Damage or corrosion caused by moisture is not a product fault, and as such is not covered under warranty
- This downlight has an insulating ceiling type IC-4 rating. Building insulation material can safely be exposed continuously to temperatures up to 90°C may abut and cover the downlight. (Please refer to the Clearance Information section and the IC-4 Rating section in this instruction manual for further details).
- If loose fill insulation or thermal insulation is not fixed into position or if there are loose combustible materials (e.g. leaves or combustible materials stored in the roof space), a barrier or guard is required as per the Clearance Information section in this instruction manual.
- Take care not to pull any electrical wires during unpacking as this may damage the connection.
- Lay out all the components on a smooth surface and make sure there are no components missing before assembling. If parts are missing, return the complete product to the place of purchase for inspection or replacement.
- Check whether the downlight has been damaged during transport. Do not operate/install any product which appears damaged in any way. Return the complete product to the place of purchase for inspection, repair or replacement.
- Ensure power to the circuit you are working on has been switched OFF before commencing any electrical work.

Installation Directions

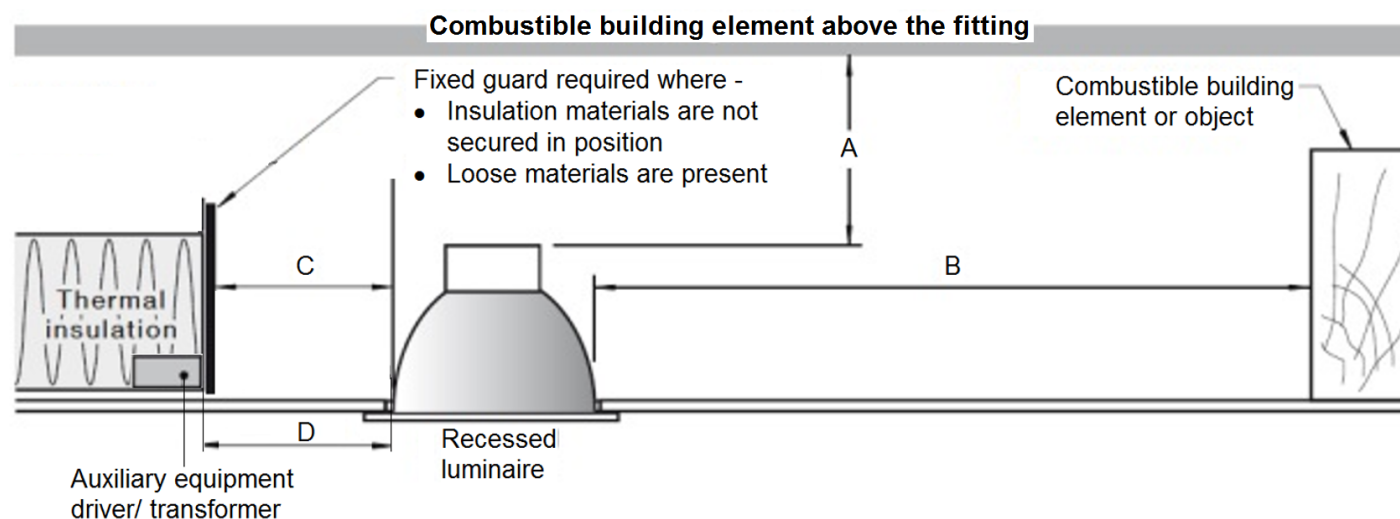
1. Remove all packaging material from the product and be careful not to throw away accessories that may be hidden within the packaging material.
2. Install a globe (Fig. 1A - not included) into the lamp holder. Do not exceed the maximum wattage rating.
3. Insert the globe into the frame (Fig. 1B) and ensure it is held in position using the spring clips on the frame. (Fig. 1C)
4. Cut an installation hole of $\varnothing 72\text{mm}$ into the ceiling. (Fig.2)
5. Insert the plug into the socket outlet and ensure it is fully plugged in. (Fig. 3A)
6. Push the springs up and install the downlight up into the cut-out hole in the ceiling. (Fig 3B)
7. Ensure all the clearance values are maintained during and after installation of the downlight, thermal insulation, loose fill insulation, loose combustible materials and any structural members.

NOTE: Refer to the Clearance Information section and the IC-4 section in this instruction manual for further details

8. After the installation, switch on the downlight to test all lighting functions and enjoy your new lighting product. (Fig. 4)

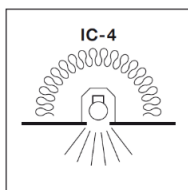


Clearance Information – AS/NZS 3000 Wiring Rules



| LOCATION | DISTANCE | DESCRIPTION |
|----------|-------------------|---|
| A | 0 mm (Minimum) | Clearance between the top of the recessed luminaire and any combustible materials, building elements or objects above it. |
| B | 0 mm (Minimum) | Clearance between the side of the recessed luminaire and any combustible materials, building elements or objects. |
| C | 0 mm (Abutted) | Insulation can be abutted against the side of recessed luminaire and covered as per IC-4 Rating. See IC-4 Rating section for more details. |
| D | 100mm | Auxiliary equipment/driver/transformer must be placed 100mm away from the luminaire. It can be placed under the thermal insulation and covered. |

IC Rating – AS/NZS 60598.2.2: 2016



1. A closed luminaire that allows building insulation to come into contact with its sides and to cover it.
2. Type IC-4 recessed luminaire can be used together with building insulation that can safely be exposed continuously to temperatures up to 90°C may abut and cover the luminaire;

Safety Tips

- Always ensure the power is OFF and the downlight has cooled down before performing any maintenance, cleaning, changing the globe or making any adjustment to the downlight.
- The external flexible cable or cord of this luminaire cannot be replaced; if the cable or cord is damaged, the downlight shall be destroyed.
- To avoid injury or damage to the downlight, ensure that power leads and screws are secure before connecting the power.
- Select a suitable location away from liquids and hazards.
- Ensure that the downlight does not come in contact with corrosive chemicals/solvents or abrasive cleaners etc.
- To clean, wipe with a soft damp clean cloth. Do NOT soak or immerse the downlight in water or other liquids.

| Specifications | | |
|-----------------------------------|------------------|--------|
| SKU # | 177020 | 177021 |
| Colour | White | Black |
| Insulation Class | Class II | |
| Rated Voltage | 220-240V~ 50Hz | |
| Rated Wattage | 11W Max. | |
| Lamp Holder | GU10 | |
| Cut-out Size | Ø 72mm | |
| Recessed Luminaire Classification | IC-4 | |
| Weight | 0.3kg | |
| Dimensions | H:153mm Dia:82mm | |