

CLICK GU10 DOWNLIGHT

SKU# 177091

Rated Voltage 220-240V~ 50Hz

Thank you for purchasing this quality MFL product. To ensure correct function and safety, please read and follow all instructions carefully before assembly, installation and use of this luminaire. Please keep instructions for future reference.

Warranty

- This luminaire is covered by a 5 year warranty. The warranty is from date of purchase, not the date of installation.
- If the luminaire is not assembled and installed by a licensed electrician it will void the warranty.
- Please retain proof of purchase and evidence of installation by a licensed electrician for any warranty enquiries.
- Warranty will be void if there is any damage due to improper usage or modification to the luminaire.
- Failure to comply with the instructions in this manual may increase the risk of damage or injury and will void warranty.

Installation Requirements

- Must be assembled and installed by a licensed electrician.
- All wiring and installation of the luminaire must adhere to the latest local and national wiring rules. eg. AS/NZS 3000 Electrical installations. If unsure, please contact a licensed electrician.
- Select a suitable location for installation:
 - The mounting point must support 2 times the weight of the luminaire.
 - This luminaire is suitable for indoor use.
 - Ensure the luminaire is not installed in direct line of an air vent/system.
 - If installing a luminaire in an area prone to moisture, ensure that the area is well ventilated and an appropriately rated exhaust fan is used if required. Damage or corrosion caused by moisture is not a product fault, and as such is not covered under warranty.
- This luminaire has an insulating ceiling type IC-4 rating. Building insulation material can safely be exposed continuously to temperatures up to 90°C may abut and cover the luminaire. (Please refer to the Clearance Information section and the IC-4 Rating section in this instruction manual for further details).
- If loose fill insulation or thermal insulation is not fixed into position or if there are loose combustible materials (e.g. leaves or combustible materials stored in the roof space), a barrier or guard is required as per the Clearance Information section in this instruction manual.
- Take care not to pull any electrical wires during unpacking as this may damage the connection.
- Lay out all the components on a smooth surface and make sure there are no components missing before assembling. If parts are missing, return the complete product to the place of purchase for inspection or replacement.
- Check whether the luminaire has been damaged during transport. Do not operate/install any product which appears damaged in any way. Return the complete product to the place of purchase for inspection, repair or replacement.
- Ensure power to the circuit you are working on has been switched OFF before commencing any electrical work.

Installation Directions

Remove all packaging material from the product and be careful not to throw away accessories that may be hidden within the packaging material.

TRIM DOWNLIGHT INSTALLATION

1. Cut an installation hole of Ø 92mm into the ceiling. Fig.1
2. Ensure the mains supply wire can be readily accessible for easier installation. Fig.2
3. Press the springs (A) up and in towards the frame (B) and install the frame (B) into the cut-out hole. Fig.3

- Open the terminal block cover by loosening the screws. Connect the mains supply wire to the terminal block. Fig.4

Mains Supply Wire

Neutral – Blue

Live – Brown

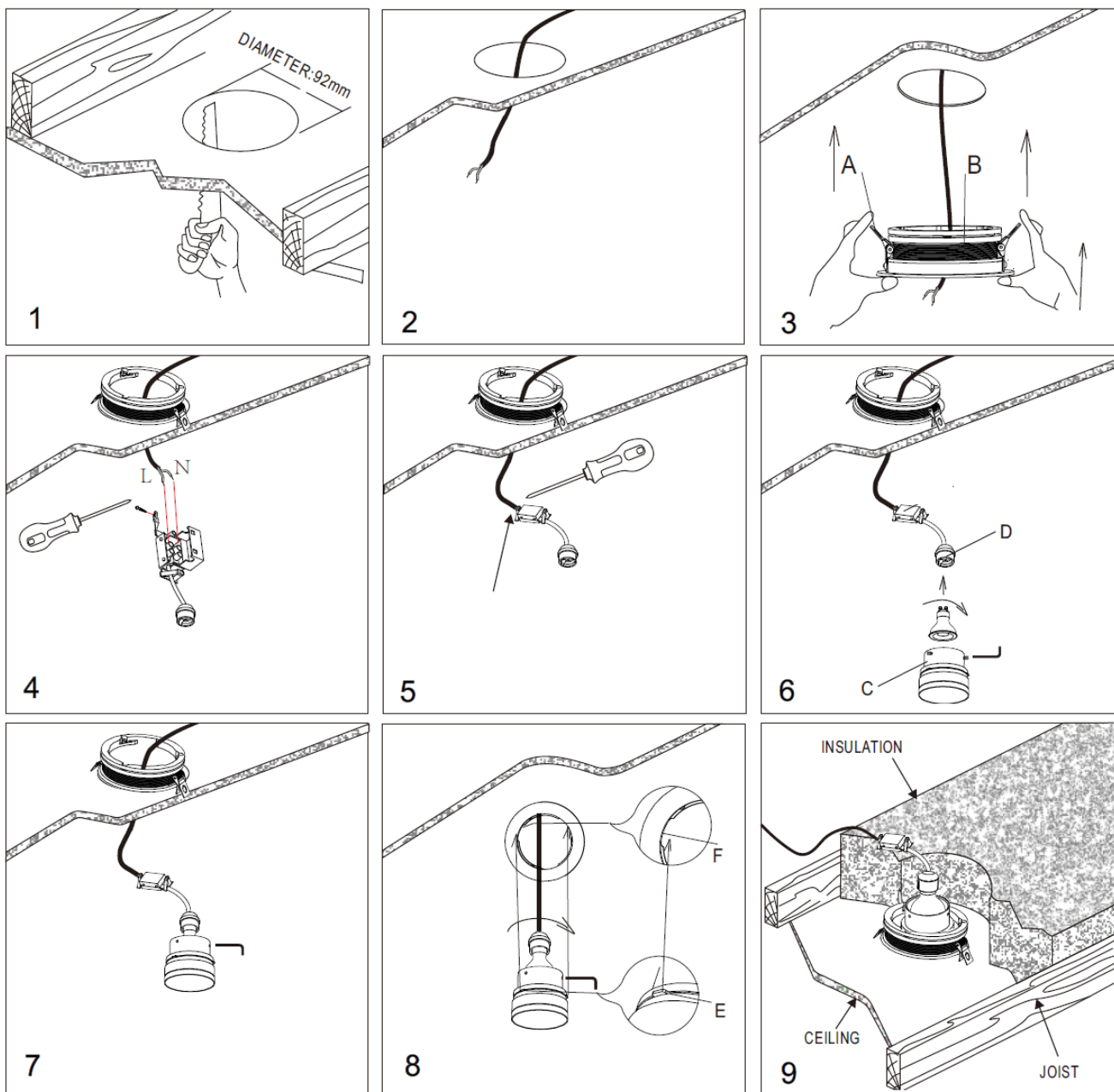
Luminaire Wire

Blue or N

Brown or L

Ensure wires are secure and no bare wires are exposed. Install and secure terminal block cover with screws. Fig.5

- Install a globe (not included) into the lamp holder (D). Do not exceed the maximum wattage rating. An energy saving LED or CFL globe is recommended. Fig. 6
- Secure the globe onto the lamp body (C) by tightening the 3 grub screws. Do NOT over tighten the grub screws, as it will damage the globe. Fig. 6, Fig. 7
- Insert the lamp body (C) into the frame (B) and secure it by rotating the tabs (E) into the grooves (F) until it locks into position. Fig.8
- Ensure all the clearance values are maintained during and after installation of the down light, thermal insulation, loose fill insulation, loose combustible materials and any structural members. Fig. 9
Please refer to the Clearance Information section and the IC-4 section in this instruction manual for further details.
- After the installation, switch on the luminaire to test and enjoy your new lighting product.



TRIMLESS DOWNLIGHT INSTALLATION

SKU# 177092 - Trimless Frame Kit is required for installation, this is sold separately and contains Parts C & D.

1. Remove the trim (B) from the frame body (A). Install the trimless frame (D - not included, sold separately) and the ring (C - not included, sold separately) onto the frame body (A). Fig.1
2. Cut an installation hole of Ø 92mm into the ceiling. Fig.2
3. Ensure the mains supply wire can be readily accessible for easier installation. Insert the trimless frame (D) into the ceiling and align with the installation hole. Fig.3
4. Secure the trimless frame (D) by installing two screws through the ceiling and allow the head to countersink into the plasterboard. Fig. 4 The screw heads should be countersunk into the plasterboard by 1-2mm. Fig. 5
5. Adjust the ring (C) so it is 1-2mm above the plaster board level.
6. Plaster the ceiling to cover the screw heads and the ring (C). Wait for it to dry Fig. 6 Sand back the plaster until the surface is smooth Fig. 7 Repaint the ceiling Fig. 8
7. Open the terminal block cover by loosening the screws. Connect the mains supply wire to the terminal block. Fig.9

Mains Supply Wire

Neutral – Blue

Live – Brown

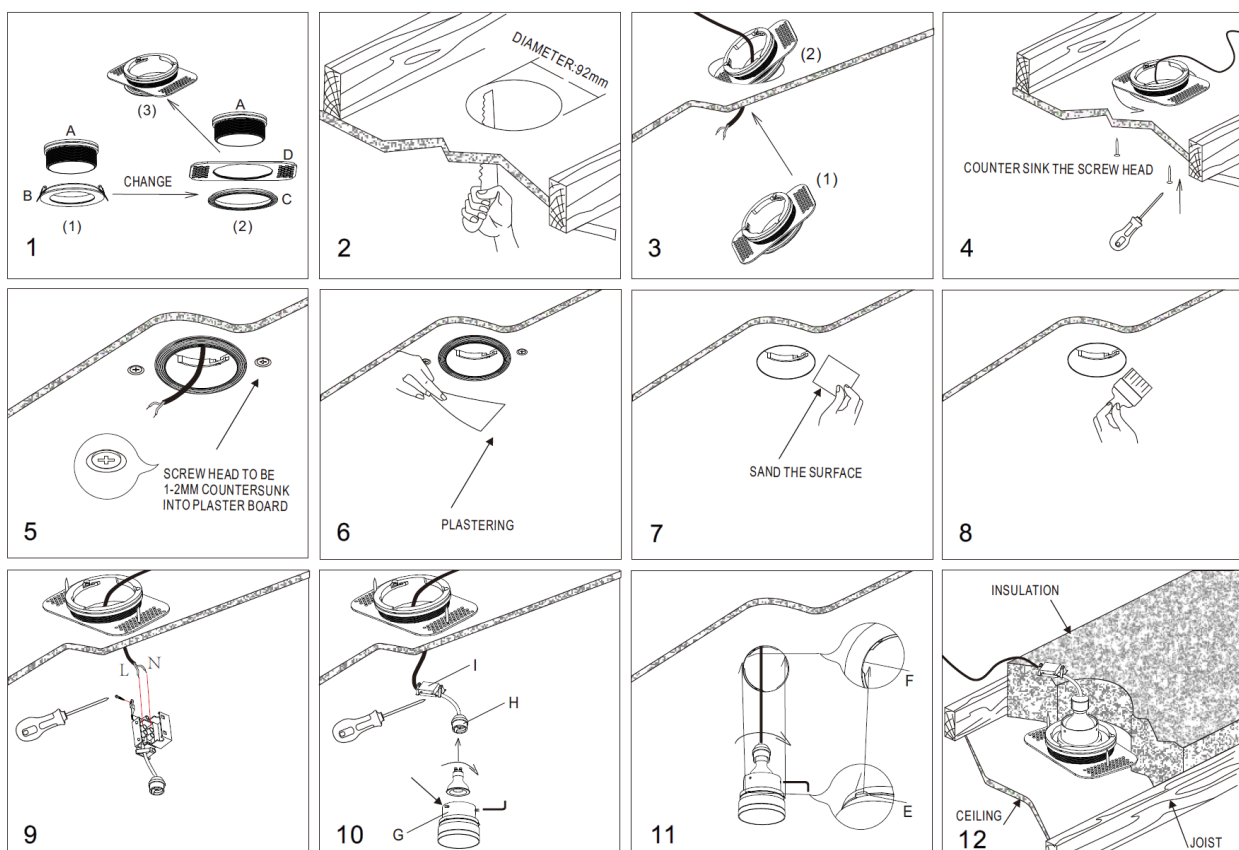
Luminaire Wire

Blue or N

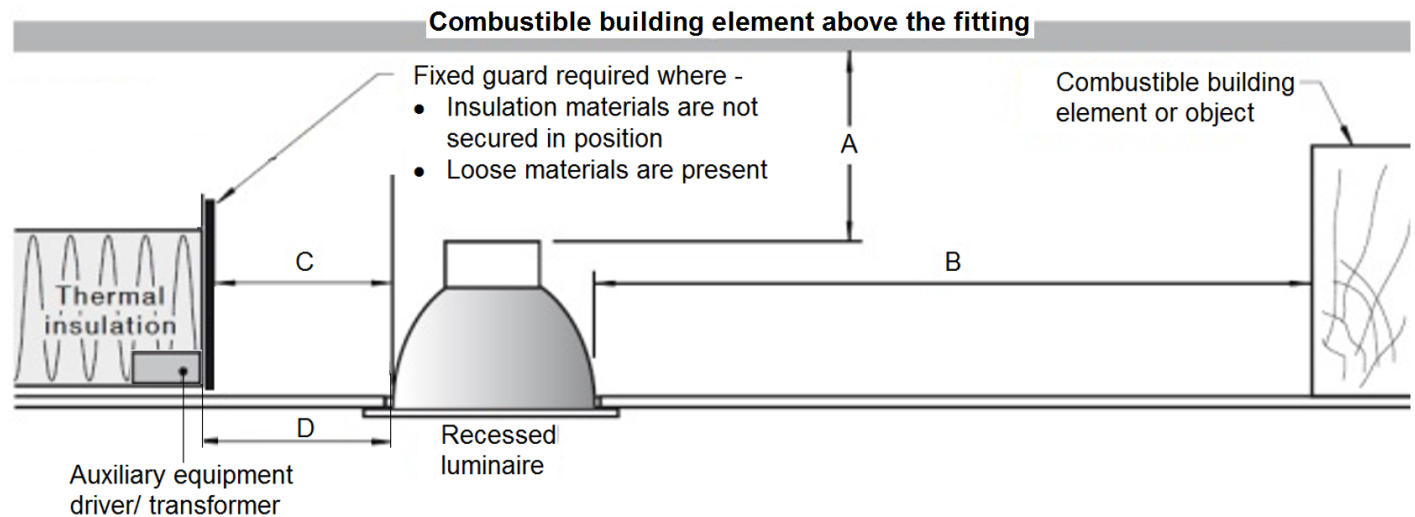
Brown or L

Ensure wires are secure and no bare wires are exposed. Install and secure terminal block cover with screws. Fig.10

8. Install a globe (not included) to the lamp holder (H). Do not exceed the maximum wattage rating. An energy saving LED or CFL globe is recommended. Secure the globe onto the lamp body (G) by tightening 3 grub screws. Do NOT over tighten the screws, as it will damage the globe. Fig. 10
 9. Insert the lamp module (G) into the trimless frame and secure it by rotating the tabs (E) into the grooves (F) until it locks into position. Fig.11
 10. Ensure all the clearance values are maintained during and after installation of the down light, thermal insulation, loose fill insulation, loose combustible materials and any structural members. Fig. 12
- Please refer to the Clearance Information section and the IC-4 section in this instruction manual for further details.
11. After the installation, switch on the luminaire to test and enjoy your new lighting product.

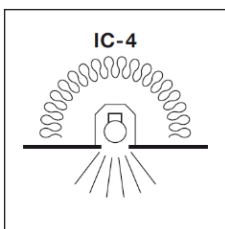


Clearance Information – AS/NZS 3000 Wiring Rules



LOCATION	DISTANCE	DESCRIPTION
A	50 mm (Minimum)	Clearance between the top of the recessed luminaire and any combustible materials, building elements or objects above it.
B	50 mm (Minimum)	Clearance between the side of the recessed luminaire and any combustible materials, building elements or objects.
C	0 mm (Abutted)	Insulation can be abutted against the side of recessed luminaire and covered as per IC-4 Rating. See IC-4 Rating section for more details.
D	N/A	N/A

IC Rating – AS/NZS 60598.2.2 : 2016



1. A closed luminaire that allows building insulation to come into contact with its sides and to cover it.
2. Type IC-4 recessed luminaire can be used together with building insulation that can safely be exposed continuously to temperatures up to 90°C may abut and cover the luminaire;
3. The declared IC-4 rating is based on the default testing ambient temperatures 40°C according to the standard.
4. The insulation material must be glass wool insulation batts type, with maximum R-value 5.0.

RISK OF FIRE – Required clearance from structural members and building elements
 SCB = 50 mm HCB = 50 mm

Safety Tips

- Always ensure the power is OFF and the luminaire has cooled down before performing any maintenance, cleaning or making any adjustment to the luminaire.
- To avoid injury or damage to the luminaire, ensure that power leads and screws are secure before connecting the power.
- Select a suitable location away from liquids and hazards.
- To clean, wipe with a soft damp cloth. Do NOT soak or immerse the product in water or other liquids.
- Ensure that the luminaire does not come in contact with corrosive chemicals/solvents or abrasive cleaners etc.

Specifications	
SKU #	177091
Colour	White
Rated Voltage	220-240V~ 50Hz,
Rated Wattage	Max. 10W LED (Energy saving LED or CFL globe recommended)
Weight	0.3kg
Cut-out Size	Ø 92mm
IP Rating	IP20
Dimensions	H:60mm Dia:100mm