

CLICK WIFI CAMERA

SKU# 177098

Rated Voltage 5V 

Thank you for purchasing this quality MFL product. To ensure correct function and safety, please read and follow all instructions carefully before assembly, installation and use of this product. Please keep the instructions for future reference.

Warranty

- This product is covered by a 2 year warranty. The warranty is from date of purchase, not the date of installation. Please retain proof of purchase.
- Warranty will be void if there is any damage due to improper usage or modification to the product.
- Failure to comply with the instructions in this manual may increase the risk of damage or injury and will void warranty.

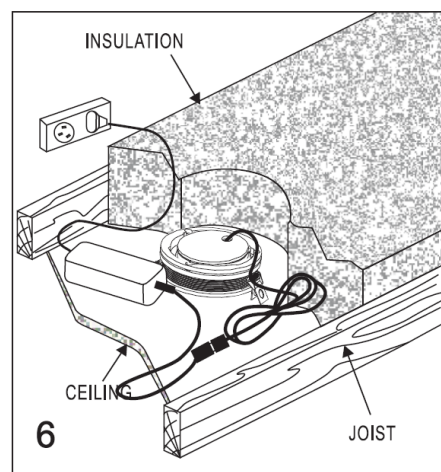
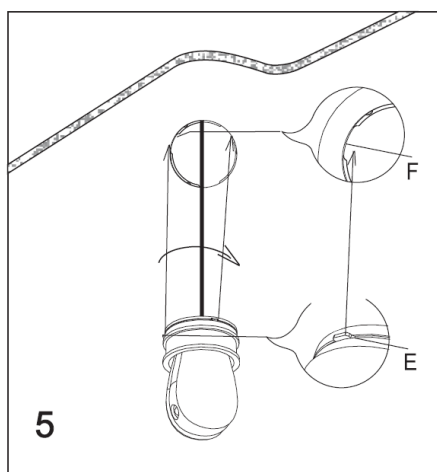
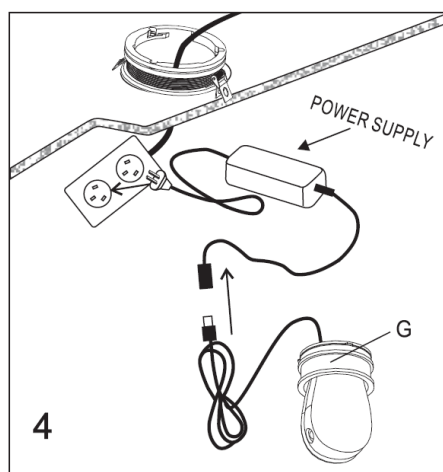
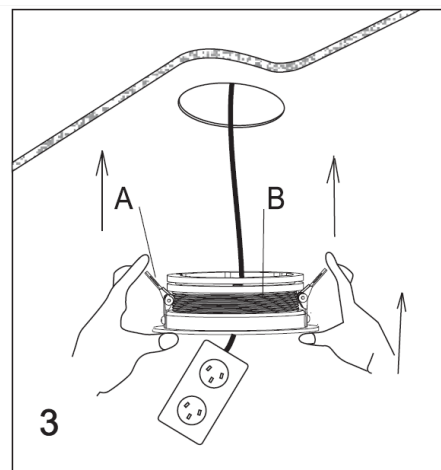
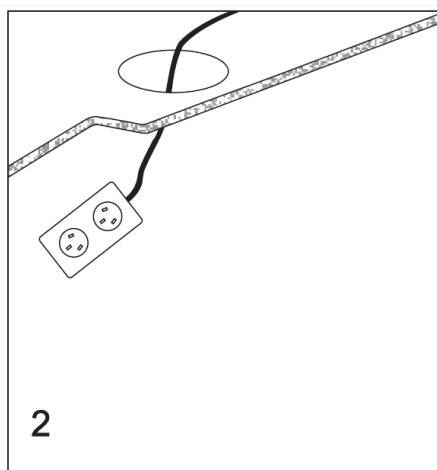
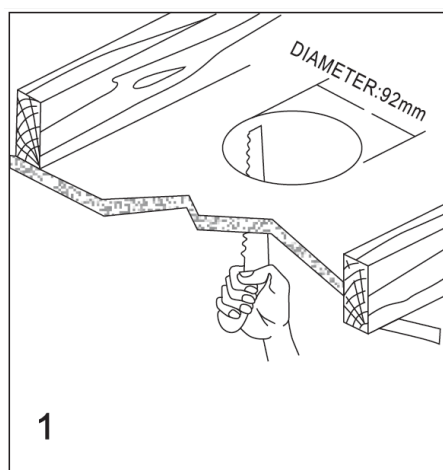
Installation Directions

- Before installation, check the installation location in the ceiling has access to a socket outlet. If it does not, please contact a licensed electrician to arrange installation of the socket outlet.
- Select a suitable location for installation:
 - This product is suitable for indoor use only.
 - Ensure this product is not installed in direct line of an air vent/system.
 - If installing the product in an area prone to moisture, ensure that the area is well ventilated and an appropriately rated exhaust fan is used if required. Damage or corrosion caused by moisture is not a product fault, and as such is not covered under warranty.
- Take care not to pull any electrical wires during unpacking as this may damage the connection.
- Lay out all the components on a smooth surface and make sure there are no components missing before assembling.
- If parts are missing, return the complete product to the place of purchase for inspection or replacement.
- Check whether the product has been damaged during transport. Do not operate/install any product which appears damaged in any way. Return the complete product to the place of purchase for inspection, repair or replacement.
- Remove all packaging material from the product and be careful not to throw away accessories that may be hidden within the packaging material.

NOTE: Before installation, plug the product into a socket outlet to ensure the camera is working correctly.

TRIM INSTALLATION

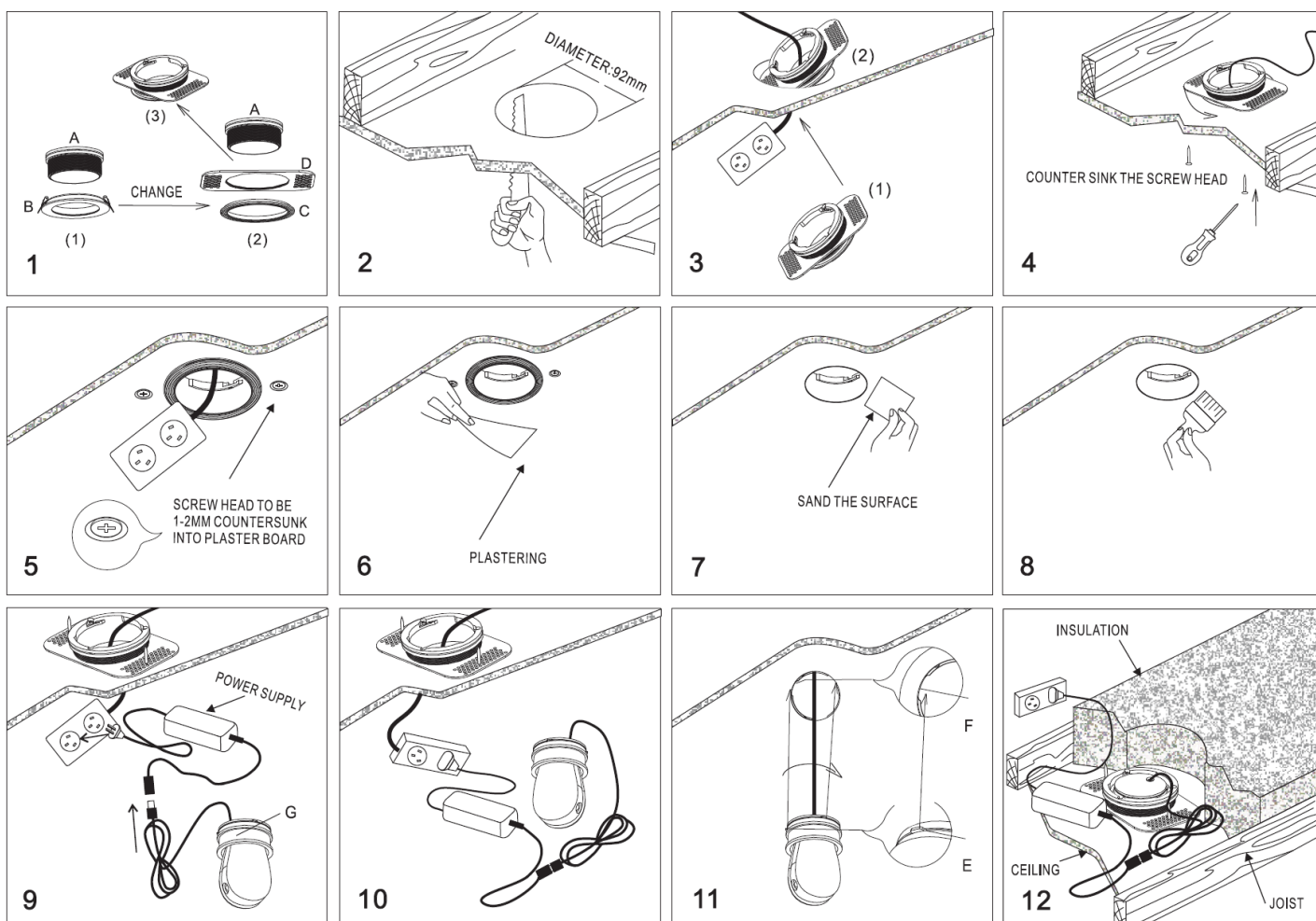
1. Cut an installation hole of Ø 92mm into the ceiling. Fig.1
2. Ensure the socket outlet can be readily accessible for easier installation. Fig.2
3. Press the springs (A) up and in towards the frame (B) and install the frame (B) into the cut-out hole. Fig.3
4. Connect the camera to the power adaptor via USB connector. Fig.4
5. Insert the power adaptor plug into the socket outlet and ensure it is fully plugged in. Fig.4
6. Insert the camera assembly (G) into the frame (B) and secure it by rotating the tabs (E) into the grooves (F) until it locks into position. Fig.5
7. After the installation, switch on the camera and refer to Lucci Connect user guide for how to use this product.



TRIMLESS INSTALLATION

SKU# 177092 - Trimless Frame Kit is required for installation, this is sold separately and contains Parts C & D.

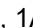
1. Remove the trim (B) from the frame body (A). Install the trimless frame (D - not included, sold separately) and the ring (C - not included, sold separately) onto the frame body (A). Fig.1
2. Cut an installation hole of Ø 92mm into the ceiling. Fig.2
3. Ensure the socket outlet can be readily accessible for easier installation. Insert the trimless frame (D) into the ceiling and align with the installation hole. Fig.3
4. Secure the trimless frame (D) by installing two screws through the ceiling and allow the head to countersink into the plasterboard. Fig. 4 The screw heads should be countersunk into the plasterboard by 1-2mm. Fig.5
5. Adjust the ring (C) so it is 1-2mm above the plaster board level.
6. Plaster the ceiling to cover the screw heads and the ring (C). Wait for it to dry Fig. 6. Sand back the plaster until the surface is smooth Fig. 7. Repaint the ceiling Fig. 8
7. Connect the camera to the power adaptor via USB connector. Fig.9
8. Insert the power adaptor plug into the socket outlet and ensure it is fully plugged in. Fig.9
9. Insert the camera assembly (G) into the frame (B) and secure it by rotating the tabs (E) into the grooves (F) until it locks into position. Fig.11
10. After the installation, switch on the camera and refer to Lucci Connect user guide for how to use this product.



Safety Tips

- Always ensure the power is OFF before performing any maintenance, cleaning or making any adjustment to the camera.
- To avoid injury or damage to the camera, ensure that power leads and screws are secure before connecting the power.
- Select a suitable location away from liquids and hazards.
- To clean, wipe with a soft damp clean cloth. Do NOT soak or immerse the product in water or other liquids.
- Ensure that the product does not come in contact with corrosive chemicals/solvents or abrasive cleaners etc.

Specifications

SKU #	177098
Rated Voltage	INPUT: 5V, 1A
Rated Wattage	Max. 4.5W
Weight	0.55kg
Cut-out Size	Ø 92mm
Dimensions	H:100mm Dia:100mm
Power adaptor	INPUT: 100-240V~, OUTPUT: 5V  , 1A
Pixel	1 Megapixel
IR Distance	10m
WDR	Digital Wide dynamic range
Bit Rate	32Kbps~2Mbps
Max Picture Size	1280x720
Audio	Two-way audio
Storage	Support Micro SD, Max. 128GB (not included)
Frequency	2.4GHz-2.4835GHz
Wifi Security	WPA-PSK / WPA2- PS encryption
Adjust Angle	Tilt/Vertical: -10° to 75° Pan/Horizontal: 0° to 355°
Camera Size	63mm x 58mm x 96mm