

LEDLUX DAWN II LED BATTEN
SKU# 180076,180077,180078,180079
Rated Voltage 220-240V~ 50Hz

Thank you for purchasing this quality Lucci product. To ensure correct function and safety, please read and follow all instructions carefully before assembly, installation and use of the product. Please keep the instructions for future reference.

Warranty

- This product is covered by a 3-year warranty. Please retain the proof of purchase.
- Warranty will be void if there is any damage due to improper usage or modification to the product.
- Failure to comply with the instructions in this manual may increase the risk of damage or injury and will void the warranty.
- This luminaire is not suitable for use with dimmer switches. Warranty will be void if the luminaire is used on the same circuit which has a dimmer switch.

Installation requirements

- Must be installed by a licensed electrician.
- All wiring and installation of the luminaire must adhere to the latest local and national wiring rules. E.g. AS/NZS 3000 Electrical installations.
- This is a Class I luminaire and must be earthed during installation.
- Select a suitable location for installation:
 - This luminaire is suitable for indoor use only.
 - The mounting point must support 2 times the weight of the luminaire.
 - Ensure the luminaire is not installed in direct line of an air vent/system
 - If installing a luminaire in an area prone to moisture, ensure that the area is well ventilated, and an appropriately rated exhaust fan is used if required. Damage or corrosion caused by moisture is not a product fault, and as such is not covered under warranty.
- Take care not to pull any electrical wires during unpacking as this may damage the connection.
- Lay out all the components on a smooth surface and make sure no components are missing before assembling. If parts are missing, return the complete product to the place of purchase for inspection or replacement.
- Check whether the luminaire has been damaged during transport. Do not operate/install any product which appears damaged in any way. Return the complete product to the place of purchase for inspection, repair or replacement.
- Ensure power to the circuit you are working on has been switched OFF, before commencing any electrical work.

Installation directions

Remove all packaging material from the luminaire and be careful not to throw away accessories that may be hidden within the packaging material. If assembly is required, place the luminaire on a smooth non-scratch surface.

1. Loosen the four screws from the end covers. Remove the insulation plugs before accessing the screws. (Fig.1)
2. Remove the end covers from both sides. (Fig.2)
3. Adjust the colour temperature (3000K - 4000K - 5000K) according to your need. (Fig.3)

NOTE: There are four spacers provided if the wires of the mains supply are required to run through the centre. Install the spacers first before proceeding to the next step.

4. Use the luminaire as a template, mark the screw positions on the desired surface. And then drill the holes into the desired surface. (Fig.4)
5. Install the luminaire onto the desired surface using appropriately sized mounting screws. Ensure the screws used are suitable for the mounting surface.

Connect the main supply wire to the terminal block as follows: (Fig.5)

Mains Supply Wire

- Earth – Yellow/Green
- Neutral – Blue or Black
- Live – Brown or Red

Luminaire Wire

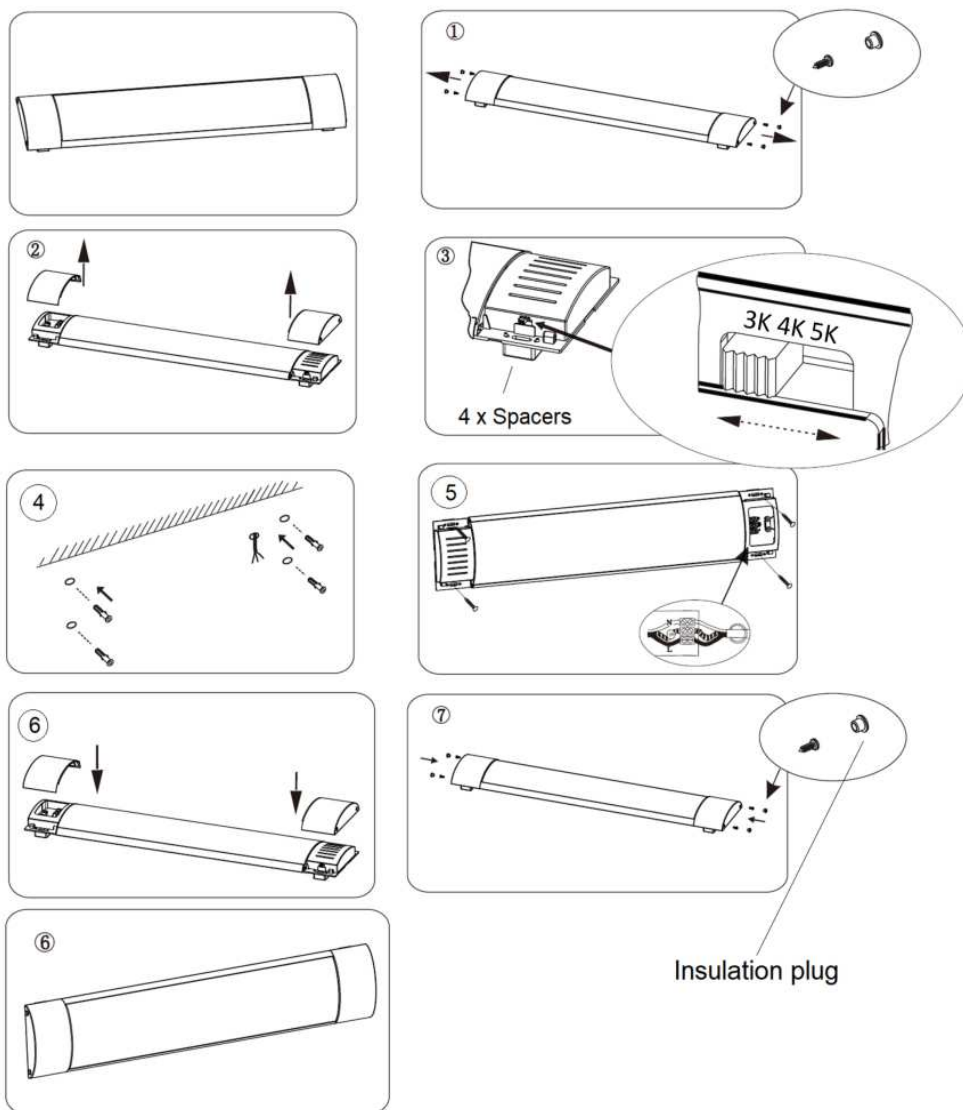
- Yellow/Green \oplus
- Blue
- Brown

Ensure wires are secure, and no bare wires are exposed.

6. Install the end covers back to the luminaire. (Fig.6)
7. Secure the end covers by tightening the four screws. (Fig.7)

NOTE: Ensure the insulation plug is installed back to the screw holes.

8. After the installation, switch on the luminaire to test all the lighting functions and enjoy your new luminaire.



Safety tips

- Always ensure the power is OFF and the luminaire has cooled down before performing any maintenance, cleaning or making any adjustment to the luminaire.
- To avoid injury or damage to the luminaire, ensure that power leads and screws are secure before connecting the power.
- The light source of this luminaire is not replaceable; when the light source reaches its end of life, the whole luminaire shall be replaced.
- Select a suitable location away from liquids and hazards.
- Ensure that the luminaire does not come in contact with corrosive chemicals/solvents or abrasive cleaners etc.
- To clean, wipe with a soft damp cloth. Do NOT soak or immerse the luminaire in water or other liquids.

Specifications

SKU #	180076	180077	180078	180079
Colour	Silver	White	Silver	White
Rated Voltage	220-240V~ 50Hz			
Rated Wattage	35W		48W	
LED	CCT 3000K - 4000K – 5000K 3600 lumens, CRI > 80		CCT 3000K - 4000K – 5000K 5000 lumens, CRI > 80	
Weight	0.9kg		1.2kg	
IP Rating	IP20		IP20	
Dimensions	L:910MM x W:120MM x H:30MM		L:1210MM x W:120MM x H:30MM	