

SANS 400mm FLUSH MOUNT

SKU# 189203

Rated Voltage 220-240V~ 50Hz

Thank you for purchasing this quality Bayside product. To ensure correct function and safety, please read and follow all instructions carefully before assembly, installation and use of this product. Please keep instructions for future reference.

Warranty

- This luminaire is covered by a 2-year warranty. The warranty is from the date of purchase, not the date of installation.
- If the luminaire is not assembled and installed by a licensed electrician, the warranty will be void.
- Please retain the proof of purchase and evidence of installation by a licensed electrician for any warranty enquiries.
- The use of non-compatible dimmers may damage the LED luminaire and will void your warranty.
- Warranty will be void if there is any damage due to improper usage or modification to the luminaire.
- Failure to comply with the instructions in this manual may increase the risk of damage or injury and will void the warranty.

Installation Requirements

- This luminaire must be assembled and installed by a licensed electrician.
- All wiring and installation of the luminaire must adhere to the latest local and national wiring rules. E.g. AS/NZS 3000 Electrical Installations.
- This luminaire is a Class II product and must be maintained during wiring and installation.
- Select a suitable location for installation:
 - This luminaire is suitable for indoor use only.
 - The mounting point must support 2 times the weight of the luminaire.
 - Ensure the luminaire is not installed in the direct line of an air vent/system.
 - If installing a luminaire in an area prone to moisture, ensure that the area is well ventilated, and an appropriately rated exhaust fan is used if required. Damage or corrosion caused by moisture is not a product fault, and as such is not covered under warranty.
- The colour shifting function will only operate with a mechanical or relay ON/OFF switch.
- The colour shifting function will not operate with a semi-conductor ON/OFF switch.
- This luminaire is dimmable and was tested with the dimmers listed in the specification section at the date of publication. The use of a LED dimmer such as the Lucci LEDlux SKU# 290998 or Lucci LEDlux SKU# 290997 or Lucci Connect SKU# 299043 dimmer is highly recommended.
NOTE: For the best dimming range, use the Lucci LEDlux SKU# 290998 dimmer and adjust the variable resistor at the minimum and maximum dimming positions on the dimmer during the installation.
NOTE: Dimming may cause buzzing sounds or a slight flicker. There may be slight delays with the LED luminaire start-up or uneven light performance when more than one LED luminaire is linked together, switched ON or dimmed. This is not a product fault and as such is not covered under warranty.
NOTE: Some dimmers have a minimum load of 20W. Ensure the dimmer position is on the maximum setting before turning on the LED light and adjust the dimmer down to your desired light level.
NOTE: Testing cannot account for installation variables such as variation in mains supply voltage, cable capacitance, electrical noise, transients, surges and ripple control signals (commonly found in NSW & QLD).
NOTE: The information provided is correct to the best of Beacon Lighting's knowledge at the date of publication.
- Take care not to pull any electrical wires during unpacking as this may damage the connection.
- Lay out all the components on a smooth surface and make sure no components are missing before assembling. If parts are missing, return the complete product to the place of purchase for inspection or replacement.

- Check whether the luminaire has been damaged during transport. Do not operate/install any product which appears damaged in any way. Return the complete product to the place of purchase for inspection, repair or replacement.

Installation Directions

- **Ensure power to the circuit you are working on has been switched OFF before commencing any electrical work.**
- **Two people will be required for the installation process.**

1. Remove all packaging material from the product and be careful not to throw away accessories that may be hidden within the packaging material.

2. Twist and remove the mounting bracket from the luminaire. (fig. A)

NOTE: Another person will need to help with the installation by holding up the luminaire, to ensure there is no strain on the luminaire wiring.

3. Use the mounting bracket as a template to mark the screw positions on the ceiling. (fig. B)

4. Install the mounting bracket onto the ceiling by using appropriately sized mounting screws and anchors. Ensure the screws and anchors used are suitable for the mounting surface and the surrounding environment. (fig. B)

5. Slide the included heat shrink tubes over the terminal blocks and onto the luminaire wiring. (fig. C)

NOTE: Check the heat shrink tubes are the correct size and large enough to cover the terminal blocks and maintain double insulation after the installation.

6. Connect the mains supply wire to the terminal block. (fig. D) A loop terminal is provided, please see the LOOP TERMINAL section (page 4) for assistance with the wiring connection and wiring diagram

Mains Supply Wire	Luminaire Wire / Terminal Block
Neutral – Blue or Black	Blue or N
Live – Brown or Red	Brown or L

7. Ensure the wires are secure and no bare wires are exposed.

8. Slide the heat shrink tubes over the terminal blocks and heat the tubing. Move the heat back and forth across the tubing and avoid staying in one place to minimise the risk of burns or damaging any components. Continue until the wrap has been tightly secured over the terminal blocks and fully maintains double insulation for the wiring connection. (fig. E)

NOTE: The luminaire is a Class II product and must be maintained during wiring and installation.

NOTE: If the loop terminal is not used, it must fully wrapped and covered, so it is not accessible.

9. Install the luminaire back onto the mounting bracket. Align the dot on the luminaire with the dot on the mounting bracket to help with the installation. (fig. E)

10. After the installation is complete, switch on the luminaire to test and enjoy your new lighting product.

11. To operate the colour shifting function, use the wall switch.

- While the luminaire is on, toggle the wall switch OFF and ON again within 3 minutes.

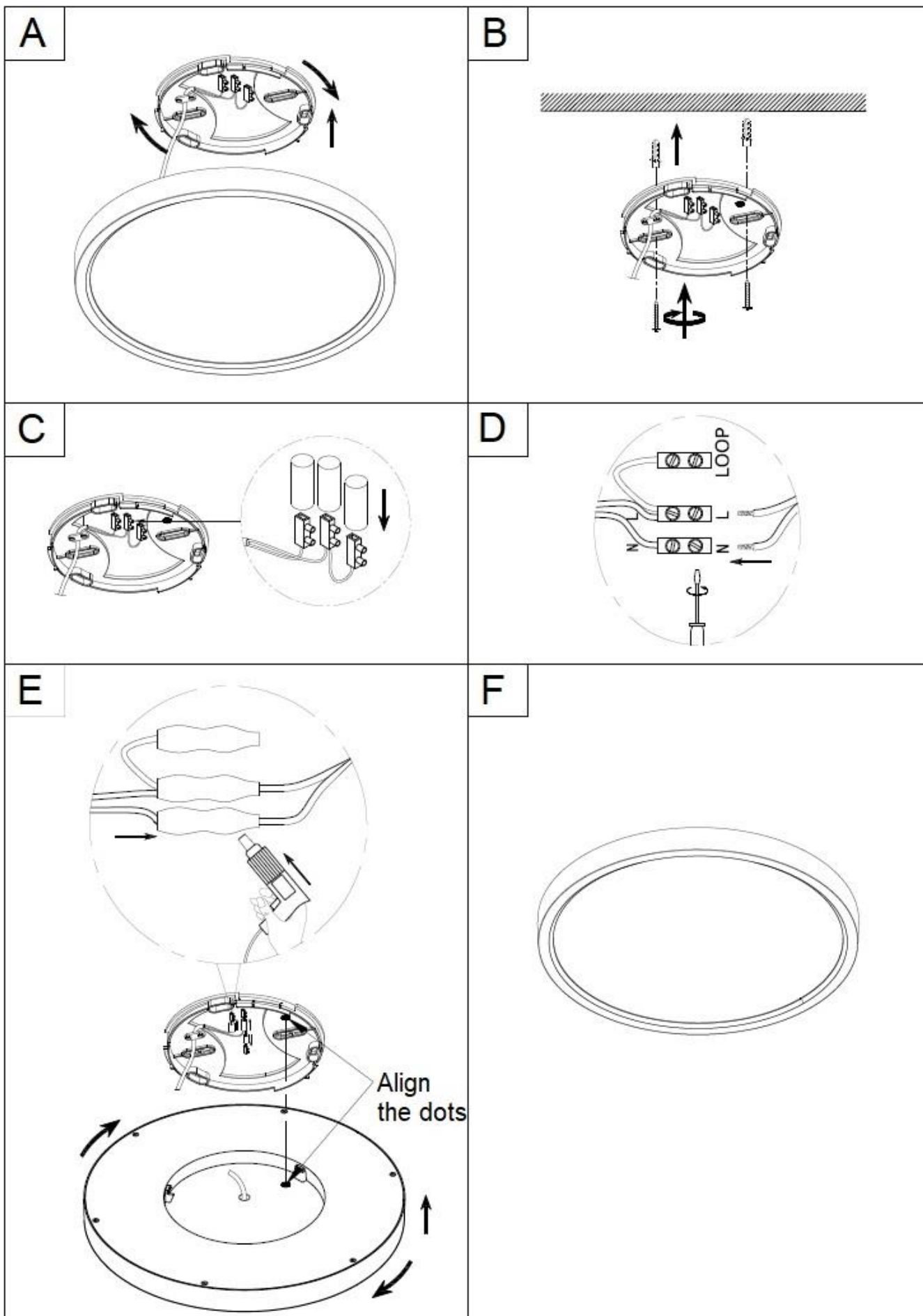
The colour shifting sequence will jump from 3000K – 5000K – 4000K.

- There is no memory function for the colour temperature setting.

- The colour temperature will reset to 3000K after the luminaire has been switched off for more than 3 minutes.

NOTE: The colour shifting function will only operate with a mechanical or relay ON/OFF switch.

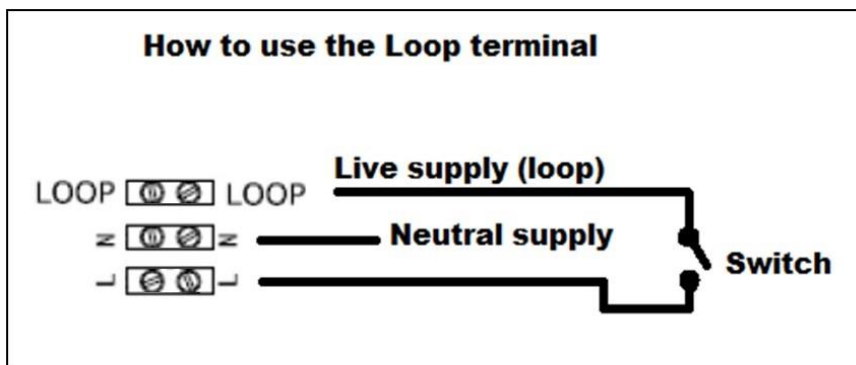
The colour shifting function will not operate with a semi-conductor ON/OFF switch.



Loop Terminal

The loop terminal is provided as a second live supply terminal. It is useful when a switch is included into the wiring as shown in the diagram below.

WARNING: ALL WIRING CONNECTION & DISCONNECTION MUST BE PERFORMED BY A LICENSED ELECTRICIAN



NOTE: Ensure the wires are secure, and no bare wires are exposed.

NOTE: The luminaire is a Class II product and must be maintained during wiring and installation.

NOTE: If the loop terminal is not used, it must fully wrapped and covered, so it is not accessible.

Troubleshooting

PROBLEM	POSSIBLE CAUSE	SUGGESTED SOLUTION
Does not work. (New installation)	Loose wiring or no power to the luminaire.	Check your circuit breaker/safety switch box and turn on the power to your circuit.
		Contact the installing licensed electrician to check if the luminaire has been installed correctly.
Does not work. (Existing installation)	No power to the luminaire.	Check your circuit breaker/safety switch box and turn on the power to your circuit.
		Contact your nearest Beacon Lighting store.
Flickers when dimming. (New installation)	Non-recommended dimmer used.	Check the dimmer used. Ensure the dimmer used is on the list of recommended dimmers in this manual.
	Some dimmers have a variable loading adjustment function. e.g. Lucci LEDlux SKU# 290998 dimmer. This may not have been adjusted during the installation of the dimmer.	The variable resistor needs to be adjusted to suit the luminaire load to reduce the flickering.
Flickers when dimming. (Existing installation)	Dimmer position on low.	Ensure the dimmer position is on the maximum setting before turning on the luminaire and adjust the dimmer down to your desired light level.
Buzzing sound.	Non-recommended dimmer used.	Check the dimmer used. Ensure the dimmer used is on the list of recommended dimmers in this manual.
Uneven light on start-up	Dimmer position on low when switched on.	Ensure the dimmer position is on the maximum setting before turning on the luminaire and adjust the dimmer down to your desired light level.

Safety Tips

- Always ensure the power is OFF and the luminaire has cooled down before performing any maintenance, cleaning or making any adjustment to the luminaire.
- To avoid injury or damage to the luminaire, ensure that power leads and screws are secure before connecting the power.
- Select a suitable location away from liquids and hazards.
- To clean, wipe with a soft damp cloth. Do NOT soak or immerse the luminaire in water or other liquids.
- Ensure that the luminaire does not come in contact with corrosive chemicals/solvents or abrasive cleaners etc.
- The light source of this luminaire is not replaceable; when the light source reaches its end of life, the whole luminaire shall be replaced. There are no serviceable parts, do not attempt to dismantle or open the product.

Specifications

SKU #	189203
Rated Voltage	220-240V~ 50Hz
Rated Wattage	24W Max.
LED Specs	Colour shifting LEDs*, Dimmable, CRI>90
Lumens	3000K – 2250 lumens 4000K – 2450 lumens 5000K – 2550 lumens
Highly Recommended Dimmers	Lucci LEDlux SKU# 290998, SKU# 290997, SKU# 299043. Buster + Punch DIM-002.
Compatible Dimmers	Clipsal PDL354RDMLLED-VW, 31E2RUDM, 32E450TM, 32E450UDM, 31E2PUDM, 32ELEDM, DIGINET LED Smart MEDM, HPM Cat. 400T.
Weight	1.2kg
Dimensions	H:25mm Dia:400mm

***NOTE: The colour shifting function will only operate with a mechanical or relay ON/OFF switch.
The colour shifting function will not operate with a semi-conductor ON/OFF switch.**