

PROTON 290MM LED FLUSH MOUNT

SKU# 189254

Rated Voltage 220-240V~ 50Hz

To ensure correct function and safety, please read and follow all instructions carefully before assembly, installation and use of this product. Please keep instructions for future reference.

Warranty

- This luminaire is covered by a 3-year warranty. The warranty is from date of purchase, not the date of installation.
- If the luminaire is not assembled and installed by a licensed electrician, the warranty will be void.
- Please retain the proof of purchase and evidence of installation by a licensed electrician for any warranty enquiries.
- This luminaire is not suitable for use with dimmer switches. Warranty will be void if the luminaire is used on the same circuit, which has a dimmer switch.
- Warranty will be void if there is any damage due to improper usage or modification to the luminaire.
- Failure to comply with the instructions in this manual may increase the risk of damage or injury and will void the warranty.

Installation Requirements

- This luminaire must be assembled and installed by a licensed electrician.
- All wiring and installation of the luminaire must adhere to the latest local and national wiring rules. E.g. AS/NZS 3000 Electrical Installations Do not exceed the maximum wattage rating.
- This luminaire is a Class I product and must be earthed during wiring and installation.
- This luminaire is recommended to be installed on ceiling mount only.
- This luminaire is rated IP23 and must be maintained during wiring and installation of the luminaire.
- Select a suitable location for installation:
 - This luminaire is suitable for indoor use only.
 - The mounting point must support 2 times the weight of the luminaire.
 - Ensure the luminaire is not installed in direct line of an air vent/system.
 - This luminaire is rated against water penetration to IP23 standards, which is spraying water at an angle of up to 60°.
 - If installing a luminaire in an area prone to moisture, ensure that the area is well ventilated, and an appropriately rated exhaust fan is used if required. Damage or corrosion caused by moisture is not a product fault, and as such is not covered under warranty.
- The luminaire is not suitable to use with dimmer switches and must not be used with a circuit which has a dimmer.
- The colour temperature selection **MUST** be made during the installation, as the switch can only be accessed by a licensed electrician
- Take care not to pull any electrical wires during unpacking as this may damage the connection.
- Lay out all the components on a smooth surface and make sure no components are missing before assembling. If parts are missing, return the complete product to the place of purchase for inspection or replacement.
- Check whether the luminaire has been damaged during transport. Do not operate/install any product which appears damaged in any way. Return the complete product to the place of purchase for inspection, repair or replacement.

Installation Directions

1. Ensure power to the circuit you are working on has been switched OFF before commencing any electrical work. (Fig 1)
Remove all packaging material from the product and be careful not to throw away accessories that may be hidden within the packaging material (Fig 2)

2. Remove the cover from the luminaire by twisting in clockwise direction. (Fig. 3)

3. Select the colour temperature by flicking the switch inside the luminaire. (Fig. 4)

CW – Cool White 4000K / NW – Daylight 5000K / WW – Warm White 3000K

NOTE: The colour temperature selection MUST be made during the installation as the switch can only be accessed by a licensed electrician.

NOTE: When changing the colour temperature, ensure the luminaire is switched off. If the luminaire is not switched off it may cause the LED driver to fail.

4. Use the luminaire body as a template to mark the screw positions on the ceiling. Install the luminaire body onto the ceiling by using appropriately sized mounting screws and anchors. Ensure the screws and anchors used are suitable for the mounting surface and the surrounding environment. (Fig. 5)
5. Remove the cover from the terminal block by loosening the screw nut. (Fig. 6)
6. Connect the mains supply wire to the terminal block. Ensure all wiring is secure and no bare wires are exposed. (Fig. 7)

Mains Supply Wire

Earth – Yellow/Green

Neutral – Blue or Black

Live – Brown or Red

Luminaire Wire / Terminal block

Yellow/Green or 

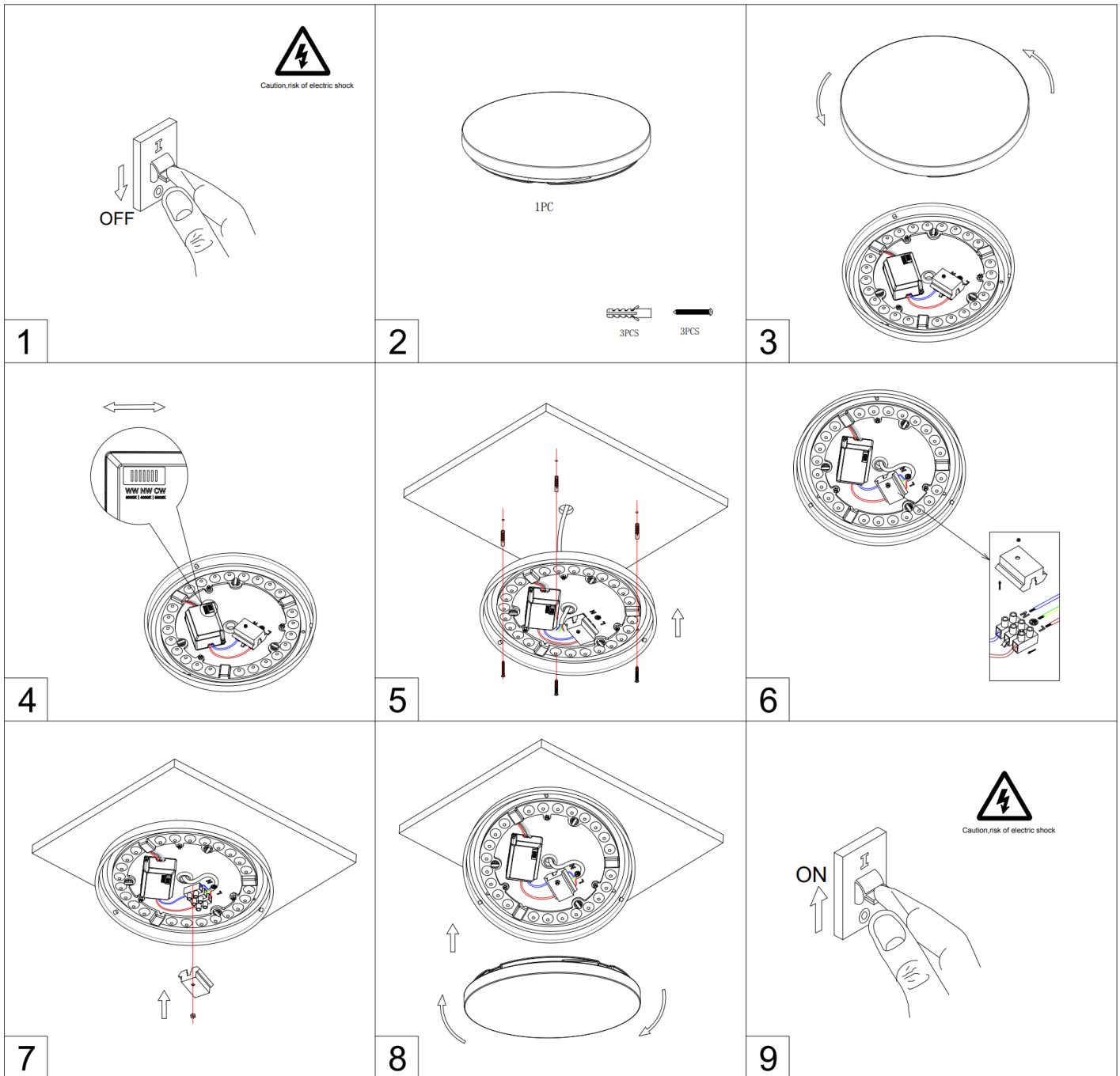
Blue or N

Brown or L

NOTE: This luminaire is a Class I product and must be earthed during the wiring and installation.

NOTE: Install the cover back onto the terminal block and secure using the screw nut.

7. Install the cover back onto the luminaire by twisting in anticlockwise direction. (Fig. 8)
8. After the installation is complete, turn the power to the circuit ON and test all the lighting functions of the luminaire before the licensed electrician leaves and enjoy your new lighting product. (Fig. 9)



Safety Tips

- Always ensure the power is OFF and the luminaire has cooled down before performing any maintenance, cleaning or making any adjustment to the luminaire.
- To avoid injury or damage to the luminaire, ensure that power leads and screws are secure before connecting the power.
- Select a suitable location away from liquids and hazards.
- To clean, wipe with a soft damp cloth. Do NOT soak or immerse the luminaire in water or other liquids.
- Ensure that the luminaire does not come in contact with corrosive chemicals/solvents or abrasive cleaners etc.
- The light source of this luminaire is not replaceable; when the light source reaches its end of life, the whole luminaire shall be replaced. There are no serviceable parts, do not attempt to dismantle or open the product.

Specifications	
SKU #	189254
Rated Voltage	220-240V~ 50Hz
Rated Wattage	11W
LED Specs	Non-dimmable , Colour shifting LEDs, CRI>80
Lumens	3000K – 900 lumens 4000K – 950 lumens 5000K – 900 lumens
IP rating	IP 23
Weight	0.4kg
Luminaire Dimensions	H:75mm Dia:290mm