

DASH LED CCT WALL BRACKET

SKU# 190740, 190741, 190742, 190743, 190744, 190745

Rated Voltage 220-240V~ 50Hz

Thank you for purchasing this quality Lucci product. To ensure correct function and safety, please read and follow all instructions carefully before assembly, installation and use of this product. Please keep instructions for future reference.

Warranty

- This luminaire is covered by a 3 year warranty. The warranty is from date of purchase, not the date of installation.
- If the luminaire is not assembled and installed by a licensed electrician the warranty will be void.
- Please retain proof of purchase and evidence of assembly and installation by a licensed electrician.
- The use of non-compatible dimmers may damage the LEDs and will void the warranty.
- Warranty will be void if there is any damage due to improper usage or modification to the luminaire.
- Failure to comply with the instructions in this manual may increase the risk of damage or injury and will void warranty.

Installation Requirements

- This luminaire must be assembled and installed by a licensed electrician.
- All wiring and installation of the luminaire must adhere to latest local and national wiring rules.
eg. AS/NZS 3000 Electrical installations.
- This luminaire is a Class I product and must be earthed.
- Select a suitable location for installation:
 - This luminaire is protected against water penetration to IP44 standards, which is against water splashed from all direction. This must be maintained during installation.
 - It is suitable for indoor or outdoor use.
 - The mounting point must support 2 times the weight of the luminaire.

- This luminaire is dimmable and has been tested at the date of publication with the dimmers listed in the specification section. The use of a LED dimmer such as the Lucci LEDlux SKU# 290998 or SKU# 290997 dimmer is highly recommended.

NOTE: For the best dimming range, use with the Lucci LEDlux SKU# 290998 dimmer and adjust the variable resistor at minimum and maximum dimming positions on the dimmer during the installation.

NOTE: Dimming may cause buzzing sounds or a slight flicker. There may be slight delays with the LED luminaire start up or slight uneven light performance when more than one LED luminaire is linked together, switched ON or dimmed. This is not a luminaire fault and as such is not covered under warranty.

NOTE: Some dimmers have a minimum load of 20W. Ensure the dimmer position is on the maximum setting before turning on the LED luminaire and adjust the dimmer down to your desired light level.

- Take care not to pull any electrical wires during unpacking as this may damage the connection.
- Lay out all the components on a smooth surface and make sure there are no components missing before assembling. If parts are missing, return the complete product to the place of purchase for inspection or replacement.
- Check whether the luminaire has been damaged during transport. Do not operate/install any product which appears damaged in any way. Return the complete product to the place of purchase for inspection, repair or replacement.

Installation Directions

Remove all packaging material from the product and be careful not to throw away accessories that may be hidden within the packaging material. If assembly is required, lay the luminaire on a smooth non-scratch surface.

1. Loose the screws on the side of the luminaire then remove the mounting bracket. (Fig 1)
2. Carefully pull the supply cable through the cable entry. (Fig 2)
3. Use the mounting bracket as a template to mark the position of the holes onto the wall. (Fig 3)

- Drill holes into the wall and place the plastic anchors into the holes. Secure the mounting bracket onto the wall with the screws provided. Ensure the screws and anchors used are suitable for the mounting surface and the surrounding environment. Water-proof gaskets is provided, make sure it is on the screws before tightening them up. (Fig 4)

NOTE: A non-corrosive bead of silicone MUST be applied before installation onto the wall ensuring that no water can run down into the cabling.

- Adjust the colour temperature (3000K – 4000K – 5000K) using the CCT switch inside the canopy according to your needs (Fig 5)
- Connect the mains supply wire to the terminal block. (Fig 6)

Mains Supply Wire

Earth – Yellow/Green

Neutral – Blue or Black

Live – Brown or Red

Luminaire Wire / Terminal block

Yellow/Green or 

Blue or N

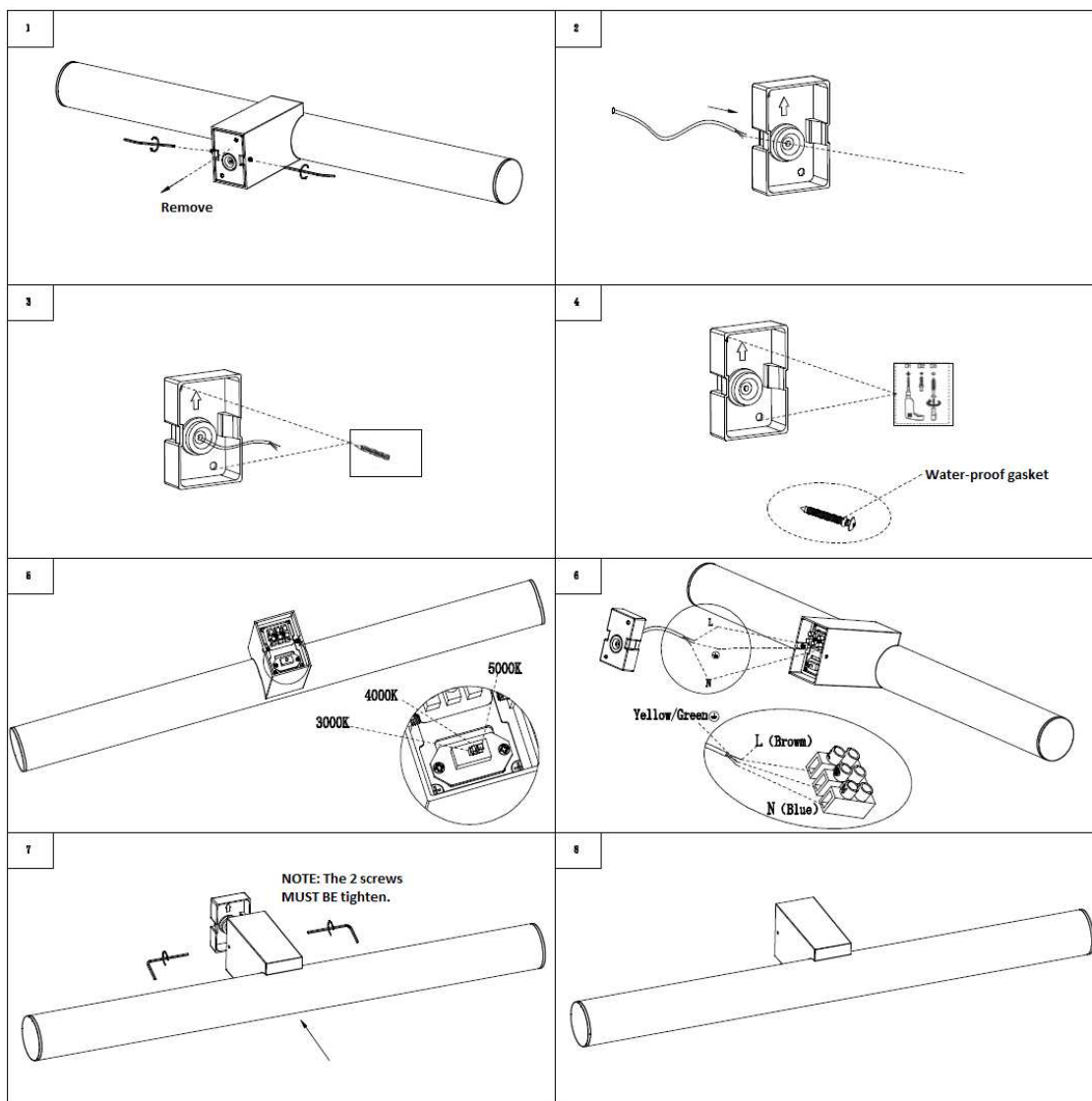
Brown or L

Ensure the wires are secure and no bare wires are exposed.

- Install the main body on the mounting bracket by tightening the two screws with the provided allen key. (Fig 7)

NOTE: Check and ensure the two screws are tighten.

- After the installation, switch on the luminaire to test and enjoy your new lighting product.



Safety Tips

- Always ensure the power is OFF and the luminaire has cooled down before performing any maintenance, cleaning or making any adjustment to the luminaire.
- To avoid injury or damage to the luminaire, ensure that power leads and screws are secure before connecting the power.
- The luminaire MUST NOT be used if the shade has been cracked. Replace any cracked protective shield.
- To clean, wipe with a soft damp cloth. Do NOT soak or immerse the product in water or other liquids.
- Ensure that the luminaire does not come in contact with corrosive chemicals/solvents or abrasive cleaners etc.

Specifications

SKU #	190740	190741	190742	190743	190744	190745
Colour	Matte Black	Chrome	Matte Black	Chrome	Matte Black	Chrome
Rated Voltage	220-240V~ 50Hz					
Rated Wattage	13W		19W		25W	
LED Specs	Bore LEDs, 750 Lumens, 3000K – 4000K – 5000K, CRI 85, Dimmable		Bore LEDs, 1100 Lumens, 3000K – 4000K – 5000K, CRI 85, Dimmable		Bore LEDs, 1500 Lumens, 3000K – 4000K – 5000K, CRI 85, Dimmable	
IP Rating	IP44					
Weight	0.7kg		0.9kg		1.0kg	
Dimensions	H:65mm W:600mm Ext:135 mm		H:65mm W:900mm Ext:135 mm		H:65mm W:1200mm Ext:135 mm	
Dimmer Information	Highly Recommended Dimmers			Compatible Dimmers		
	Lucci LEDlux SKU# 290998, SKU# 290997			Buster & Punch: DIM-002 LUMEX Load Smart LT1D450LS; DIGINET LED Smart MEDM; Clipsal 31E2RUDM, 32E450UDM, 31E2PUDM, 32ELEDM and 32E450TM HPM: Cat. 400T, Cat. 400L		

Troubleshooting		
PROBLEM	POSSIBLE CAUSE	SUGGESTED SOLUTION
Does not work. (New installation)	Wiring loose or no power to the LED fitting.	Check your circuit breaker/safety switch box and turn on power to your circuit.
		Contact the installing licensed electrician to check if the fitting has been installed correctly.
Does not work. (Existing installation)	No power to the LED fitting.	Check your circuit breaker/safety switch box and turn on power to your circuit.
		Contact your nearest Beacon Lighting store.
Flickers when dimming. (New installation)	Non-recommended dimmer used.	Check the dimmer used. Ensure the dimmer used is on the list of recommended dimmers in this manual.
	Some dimmers have a variable loading adjustment function. eg. Lucci LEDlux SKU# 290998 dimmer. This may not have been adjusted during the installation of the dimmer.	The variable resistor needs to be adjusted to suit the LED fitting load to reduce the flickering.
Flickers when dimming. (Existing installation)	Dimmer position on low.	Ensure the dimmer position is on the maximum setting before turning on the LED fitting and adjust the dimmer down to your desired light level.
Buzzing sound.	Non-recommended dimmer used.	Check the dimmer used. Ensure the dimmer used is on the list of recommended dimmers in this manual.
Uneven light start up	Dimmer position on low when switched on.	Ensure the dimmer position is on the maximum setting before turning on the LED fitting and adjust the dimmer down to your desired light level.