

AURA BACKLIT ROUND MIRROR

SKU# 190778

Rated Voltage 220-240V~ 50Hz

Thank you for purchasing this quality Lucci product. To ensure correct function and safety, please read and follow all instructions carefully before assembly, installation and use of this appliance. Please keep instructions for future reference.

Warranty

- This appliance is covered by a 3-year warranty. The warranty is from date of purchase, not the date of installation.
- If the appliance is not assembled and installed by a licensed electrician, the warranty will be void.
- Please retain the proof of purchase and evidence of installation by a licensed electrician for any warranty enquiries.
- Warranty will be void if there is any damage due to improper usage or modification to the appliance.
- Failure to comply with the instructions in this manual may increase the risk of damage or injury and will void the warranty.
- This product has a built-in dimmer switch, do not install on a circuit which has a dimmer switch. Warranty will be void if the product is used on the same circuit which has a dimmer switch.

Installation Requirements

- This appliance must be assembled and installed by a licensed electrician.
- All wiring and installation of the appliance must adhere to the latest local and national wiring rules. E.g. AS/NZS 3000 Electrical Installations.
- The appliance is not intended for use by persons (including children) with reduced physical, sensory or mental capabilities, or lack of experience and knowledge, unless they have been given supervision or instruction concerning the use of the appliance by a person responsible for their safety.
- Children should be supervised to ensure that they do not play with the appliance.
- **WARNING: FOR SAFE USE, AN ALL-POLE DISCONNECTION MUST BE INCORPORATED INTO THE FIXED WIRING IN ACCORDANCE WITH THE WIRING RULES.**

As outline in clause 7.12.2 of AS/NZS 60335-1 for meeting the minimum electrical safety of this standard.

Please note warranty will be void if installation is without a means for an all-pole disconnection incorporated in the fixed wiring in accordance with the wiring rules.

Example: If this product is connected to a circuit that can be isolated via an all-pole safety switch at the switchboard, then this is considered to be an all-pole disconnection to the appliance electrical circuit, meeting the requirements of clause 7.12.2 of AS/NZS 60335.1.

- This is a Class II product and must be maintained during wiring and installation.
- Select a suitable location for installation:
 - This appliance is suitable for indoor use only.
 - The mounting point must support 2 times the weight of the appliance.
 - This product is rated against water penetration to IP44 standards, which is water splashing from any direction.
 - Ensure the appliance is not installed in direct line of an air vent/system.
 - If installing the appliance in an area prone to moisture, ensure that the area is well ventilated, and an appropriately rated exhaust fan is used if required. Damage or corrosion caused by moisture is not a product fault, and as such is not covered under warranty.
- Take care not to pull any electrical wires during unpacking as this may damage the connection.
- Lay out all the components on a smooth surface and make sure no components are missing before assembling. If parts are missing, return the complete product to the place of purchase for inspection or replacement.
- Check whether the product has been damaged during transport. Do not operate/install any product which appears damaged in any way. Return the complete product to the place of purchase for inspection, repair or replacement.
- Ensure power to the circuit you are working on has been switched OFF before commencing any electrical work.

Installation Directions

1. Remove all packaging material from the product and be careful not to throw away accessories that may be hidden within the packaging material.
2. Use the product template to measure the installation location onto the wall. (Fig. 1)
NOTE: This product is suitable for wall mount only, not suitable for ceiling mount.
3. Use the product template to mark the mounting bracket screw hole positions on the wall. (Fig. 2)
4. Install the mounting brackets onto the wall by using appropriately sized mounting screws and anchors. Ensure the screws and anchors used are suitable for the mounting surface and the surrounding environment. (Fig. 2)
5. Remove the terminal box cover and grommet from the terminal box by loosening the screws at the top. (Fig. 3)
6. Connect the mains supply wire to the terminal block. (Fig. 3)

Mains Supply Wire

Neutral – Blue or Black

Live – Brown or Red

Luminaire Wire / Terminal Block

Blue or N

Brown or L

7. Ensure the wires are secure and no bare wires are exposed.

NOTE: This is a Class II product and must be maintained during wiring and installation.

8. Install the terminal box cover and grommet back onto the terminal box and secure by tightening the screws. (Fig. 4)
9. Install the product onto the mounting brackets. (Fig. 5)
10. Install the top bracket to secure this product onto the wall (Fig. 6)

NOTE: This appliance must be attached securely to the wall.

11. After the installation is complete, turn the power to the circuit back ON and test all product functions.

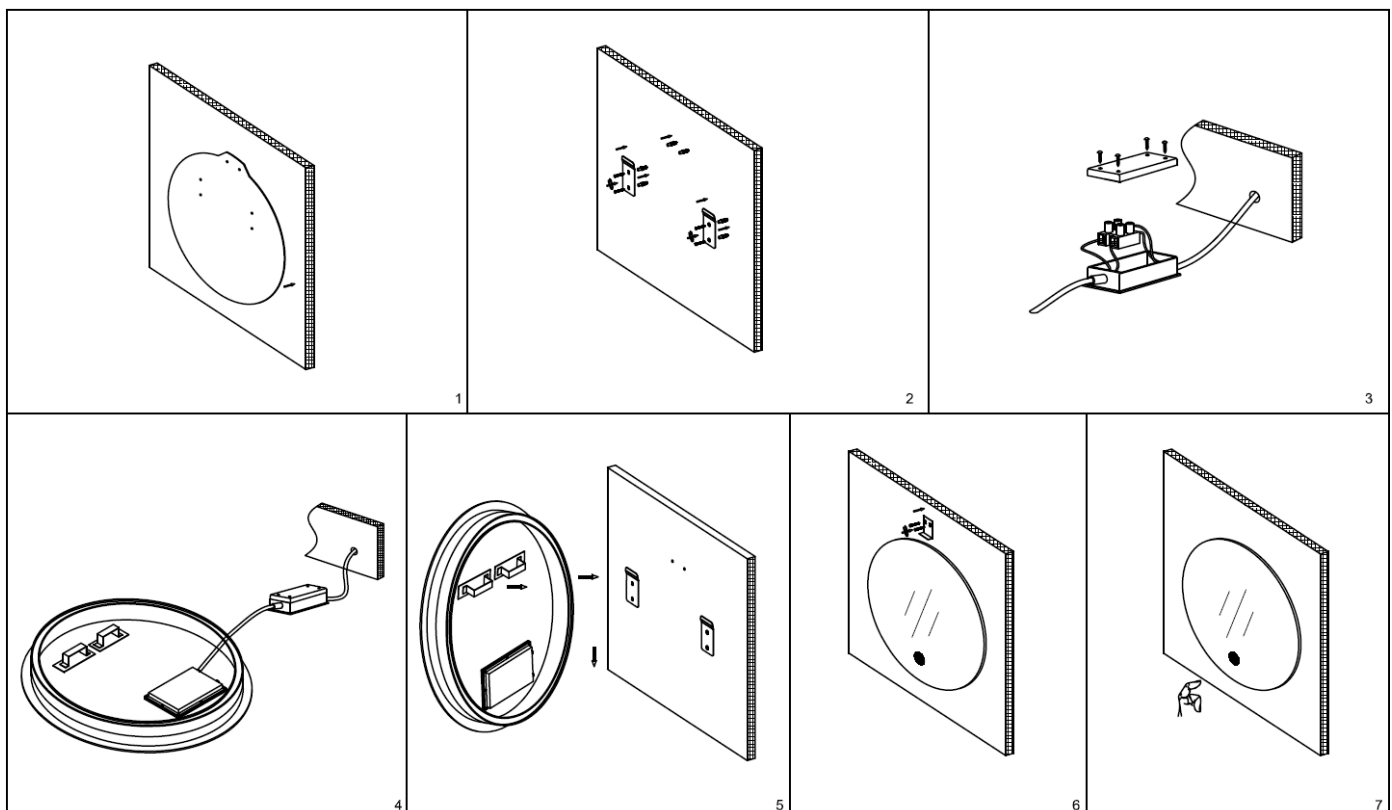
12. Press the touch switch to turn the light and demister ON/OFF. (Fig. 7)

Short press the touch switch to dim the LED light down 60% and short press again to dim down to 30%.

Long press the touch switch to change the colour temperature between 3000K-5000K.

When the LED light is ON, the demister will be ON.

When the LED light is OFF, the demister will be OFF.



Safety Tips

- Always ensure the power is OFF and the product has cooled down before performing any maintenance, cleaning, or making any adjustment to the product.
- To avoid injury or damage to the product, ensure that power leads and screws are secure before connecting the power.
- Select a suitable location away from liquids and hazards.
- To clean, wipe with a soft damp cloth. Do NOT soak or immerse the product in water or other liquids.
- Ensure that the product does not come in contact with corrosive chemicals/solvents or abrasive cleaners etc.
- The light source of this product is not replaceable; when the light source reaches its end of life, the whole product shall be replaced. There are no serviceable parts, do not attempt to dismantle or open the product.

Specifications

SKU #	190778
Rated Voltage	220-240V~ 50Hz
Rated Wattage	31W Max. (Demister Wattage:14W, LED Wattage:17W)
LED Specs	440 Max. lumens, Colour shifting 3000K-5000K, CRI>90 3-step dimming 100%-60%-30%-off
IP Rating	IP44
Weight	4.8kg
Dimensions	Dia:600mm E:40mm