

ARTISAN ROTARY DIMMER WITH INTEGRAL ON/OFF SWITCH

SKU# 197015, 197016, 197017, 197018

Rated Voltage 220-240V~ 50Hz

Thank you for purchasing this quality MFL product. To ensure correct function and safety, please read and follow all instructions carefully before assembly, installation and use of this dimmer. Please keep instructions for future reference.

Warranty

- This dimmer is covered by a 5-year warranty. The warranty is from the date of purchase, not the date of installation.
- If the dimmer is not installed by a licensed electrician, the warranty will be void.
- Please retain proof of purchase and evidence of installation by a licensed electrician for any warranty enquiries.
- Warranty will be void if there is any damage due to improper usage or modification to the dimmer.
- Failure to comply with the instructions in this manual may increase the risk of damage or injury and will void the warranty.

Installation Requirements

- **Must be wired and installed by a licensed electrician and in accordance to the current local and national wiring rules. AS/NZS 3000 Electrical Installations (the latest edition).**
- This MFL dimmer is designed for use with Lucci, MFL by Masson and Made by Mayfair branded families of dimmable LED luminaires. Where the loads are on the same electrical circuit, it must be Mains 240V dimmable LED retrofit luminaires which have a dimmable LED driver.
NOTE: A dimmable electronic transformer is not considered to be a dimmable LED Driver.
- Problems encountered when using other types of dimmable 240V luminaires NOT recommended in this installation guideline are NOT covered by the warranty.
- Do not exceed the rated output load listed below:
 - **For Mains 240V LED load: Max. 150W**
 - **For Mains 240V Halogen / Incandescent load: Max. 300W**
 - **ELV halogen with dimmable converter/transformer: Max. 300VA**
- Not suitable for inductive load, non-dimmable load, mixed loads and ELV halogen with iron core transformers.
- Do not exceed rated power input specification.
- This product is suitable for indoor use only.
- Only the front cover of the rotary dimmer is rated IP44 after it is fully installed. This must be maintained during installation. **NOTE: The recessed parts of the rotary dimmer are rated IP20.**

Installation Preparation

Before carrying out the installation the following must be considered:

- An isolation wall switch must be included in the wiring installation. The isolation wall switch allows disconnecting of the dimmer and loads from the mains 240VAC power during maintenance and cleaning of the connected load. This dimmer does not provide full disconnection/off-state. The circuit on the load side of the dimmer should be considered live.
- Ensure the power to the electrical circuit is switched OFF.
- All electrical wiring connection & disconnection must be in accordance with Australian & New Zealand wiring rules e.g. AS/NZS 3000 (the latest edition).

CAUTION: For your safety, this electronic dimmer must be installed by a licensed electrician.

Installation Directions

WARNING – HIGH VOLTAGE

- **Power to the circuit must be switched OFF at the switchboard before the installation. Household power can cause SERIOUS INJURY or DEATH.**
- **This dimmer does not provide full disconnection/off-state. The circuit on the load side of the dimmer should be considered live.**
- **Wiring must meet all local and national electrical wiring codes.**


MAKING THE ELECTRICAL CONNECTION

Ensure power to the circuit you are working on is disconnected at the switchboard before the installation.

1. Cut an installation hole of Ø75mm diameter into the wall.
2. Remove the rotary dimmer from the body/mounting frame.
3. Pull the mains supply earth, active and the luminaire load through installation hole to help with installation.

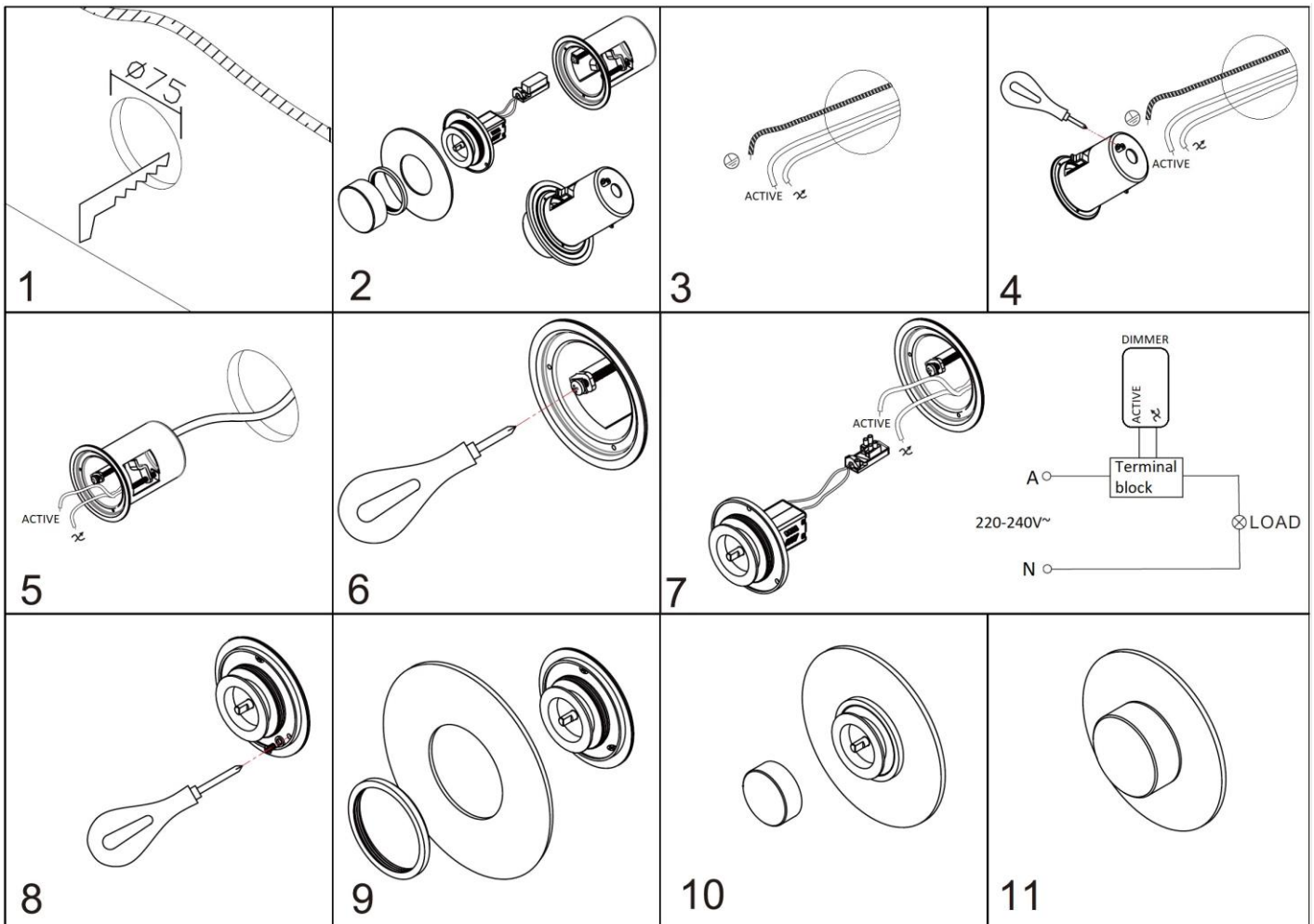
NOTE: This is a Class I product and must be earthed.

NOTE: The dimmer MUST be connected to the LINE side of the load. (See the wiring diagram in step 7)

4. Connect the mains supply earth to the earth terminal at the back of the body/mounting frame.
5. Pull the active and luminaire load through the back of the body/mounting frame.
6. Install the body/mounting bracket frame into the installation hole. To secure, tighten the screws until the clamp has enough force to hold onto the wall.
7. The dimmer MUST be connected to the LINE side of the load. See the wiring diagram.
Use the supplied terminal block and terminal box to connect the dimmer.
Connect the 240V~ active mains supply to the terminal block marked ACTIVE.
Connect the luminaire load to the terminal block marked .
Connect the neutral of the load to the 240V~ mains supply neutral.
8. Install the dimmer into the body/mounting frame and secure by tightening the screws.
9. Install the decorative plate over the dimmer and secure using the locking ring.
10. Install the rotary button onto the dimmer.
11. Test all the dimmer functions to ensure it is fully operational and functioning.

NOTE: Only the front cover side of the rotary dimmer is IP44 after it is fully installed.

NOTE: All recessed parts of the rotary dimmer are rated IP20



NOTE:

- Two or more dimmer **MUST NOT** be connected in parallel or series to control the same load from two different locations.
- An isolation wall switch must be included in the wiring installation. The isolation wall switch allows disconnecting of the dimmer and loads from the mains 240VAC power during maintenance and cleaning of the connected load. This dimmer does not provide full disconnection/off-state. The circuit on the load side of the dimmer should be considered live.
- This dimmer shall be protected by a 6A or up to a 10A maximum miniature circuit breaker, which is special use with this dimmer.
- When setting the lowest dimming point on a dimmer connected to a product featuring colour shifting at the wall switch, it is recommended to use the factory default setting. If the default setting is not used, this may cause your lights to change colour unexpectedly.

Standard Operating Functions

ON/OFF

- Push the rotary dimmer to turn the dimmer ON or OFF.

DIMMING

- Turn the rotary dimmer to dim up or down.

Additional Dimmer Functions & Settings

The below are additional settings that the end user can adjust after installation. To access or adjust these settings, push the rotary button (or dimmer post if the rotary button cover has been removed) the indicated number of times in quick succession.

NOTE: The indicator light is hidden behind the rotary button cover on this range. Remove the cover by pulling out from the wall to view the indicator light and adjust the settings, then replace the cover after adjusting.

NOTE: All colour shifting and colour temperature functions mentioned below are only compatible with products that feature colour shifting technology controlled via wall switch.

PUSH BUTTON	FUNCTION
2	Colour shifting function – Changes the colour temperature of a compatible light fitting. The indicator light on the dimmer does not flash during this operation.
4	Colour temperature reset – The luminaire will flash 2 times and reset to the warmest colour temperature (will be 3000K in most cases). The brightness will be at the lowest setting and the indicator light on the dimmer will be off.
5	Set custom minimum dimming brightness – turn the dimmer to adjust the brightness of your luminaire(s) until you have reached your preferred minimum level, then press the dimmer 5 times to set the current brightness level as the new minimum (See notes below for setting brightness below the default level). The indicator light on the dimmer will flash 4 times and will turn off after it has been set.
7	Minimum dimming brightness to zero – This will change the minimum brightness setting to zero, down from the default 20% brightness. The indicator light on the dimmer will flash 4 times and will turn off after it has been set.
10	<p>Memory function – Memorises the current brightness and colour temperature and returns the luminaire to this setting after the isolation switch has been turned OFF for more than 7 seconds and turned back on. The indicator light on the dimmer will flash 4 times and will turn off after it has been set.</p> <p>NOTE: If no memory function has been set, if the isolation switch is turned off for more than 7 seconds and then turned back on, the dimmer will reset to the OFF setting, and you will need to press the dimmer to turn on the luminaire.</p>
15	Reset to factory settings – The luminaire will be OFF, the minimum brightness will be returned to the default 20%, and any stored memory setting will be cleared. The indicator light on the dimmer will flash 4 times and will turn off after it has been set.
NOTES	<ol style="list-style-type: none"> The default minimum brightness is set at 20%. To adjust to a lower brightness, push 7 times to adjust minimum brightness to zero, then turn your dimmer to adjust to your desired level and then push 5 times to set the custom minimum brightness. If the connected luminaires are different colour temperatures, push the dimmer 4 times to reset the colour temperature. If the luminaire is dimmed down to the minimum level and the luminaire start-up is inconsistent and colour temperature is inconsistent, push the dimmer 15 times to reset to the factory settings. Repeat steps 1 and 2 again.

Product Features	
1	Soft-start operation to extend the life of the luminaire.
2	User can set the minimum dimming level.
3	Built-in short circuit protection, designed to ensure the dimmer can survive a wiring fault or catastrophic failure of the load.
4	Built-in re-settable thermal cut-off to protect the dimmer over normal operation temperature caused by overloads.

Specifications				
SKU#	197015	197016	197017	197018
Colour	Textured White	Textured Black	Brass Finish	Nickel Finish
Rated Voltage	220-240V~ 50Hz			
Minimum Load	Min. 3W			
Maximum Load	Dimmable LED - Max. 150W Halogen / Incandescent - Max. 300W ELV halogen with dimmable converter/transformer - Max. 300VA			
Compatible Loads	Capacitive load, Resistive load			
Non-compatible Loads	Inductive load, Non-dimmable load, Mixed loads, ELV halogen with iron core transformers			
IP Rating	IP20 for the back of the dimmer (recessed parts) IP44 for the front cover of the rotary dimmer (after installation)			
Weight	0.2kg			
Cut-out Size	Ø75mm			
Dimensions	Dia:90mm Ext:27.5mm			