

ARCH MIRRORED CABINET WITH LED BACKLIGHT

SKU# 198121

Rated Voltage 220-240V~ 50Hz

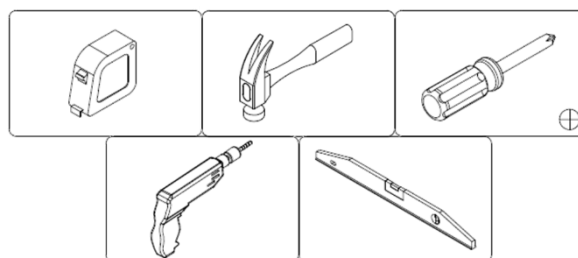
To ensure correct function and safety, please read and follow all instructions carefully before assembly, installation and use of this product. Please keep instructions for future reference.

Warranty

- This product is covered by a 3-year warranty. The warranty is from date of purchase, not the date of installation.
- If the product is not assembled and installed by a licensed electrician, the warranty will be void.
- Please retain the proof of purchase and evidence of installation by a licensed electrician for any warranty enquiries.
- Warranty will be void if there is any damage due to improper usage or modification to the product.
- Stains and damage caused by spills and leaks will not be covered by warranty.
- This product is not suitable for use with dimmer switches. Warranty will be void if the product is used on the same circuit, which has a dimmer switch.
- Failure to comply with the instructions in this manual may increase the risk of damage or injury and will void the warranty.

Installation Requirements

- This product must be assembled and installed by a licensed electrician.
- All wiring and installation of the product must adhere to the latest local and national wiring rules. E.g. AS/NZS 3000 Electrical Installations.
- This is a Class II product and must be maintained during wiring and installation.
- Select a suitable location for installation:
 - This product is suitable for indoor use only.
 - The mounting point must support 2 times the weight of the product.
 - This product is rated against water penetration to IP44 standards, which is water splashing from any direction.
 - Ensure the product is not installed in direct line of an air vent/system.
 - If installing the product in an area prone to moisture, ensure that the area is well ventilated, and an appropriately rated exhaust fan is used if required. Damage or corrosion caused by moisture is not a product fault, and as such is not covered under warranty.
- Take care not to pull any electrical wires during unpacking as this may damage the connection.
- Lay out all the components on a smooth surface and make sure no components are missing before assembling. If parts are missing, return the complete product to the place of purchase for inspection or replacement.
- Check whether the product has been damaged during transport. Do not operate/install any product which appears damaged in any way. Return the complete product to the place of purchase for inspection, repair or replacement.
- Ensure power to the circuit you are working on has been switched OFF before commencing any electrical work.
- The following tools (not included) are required for installation:
 - Tape measure
 - Hammer
 - Screwdriver
 - Drill
 - Spirit level



NOTE: Due to the size/weight of the product, two people will be required to lift it up during the installation process.

Installation Directions

1. Remove all packaging material from the product and be careful not to throw away accessories that may be hidden within the packaging material.
2. Select a suitable location for installation, see the installation requirements on page 1. Use the mounting bracket template (E x1) to measure and mark the mounting brackets (A x2) screw hole positions on the wall. (Fig. 1)
3. Install the mounting brackets (A x2) onto the wall by using appropriately sized mounting screws and anchors (B x6). Ensure the mounting screws and anchors (B x6) used are suitable for the mounting surface and the surrounding environment. (Fig. 1)
4. Remove the terminal box cover and grommet from the terminal box by loosening the screws at the top. (Fig. 2)
5. Connect the mains supply wire to the terminal block. (Fig. 2)

Mains Supply Wire

Neutral – Blue or Black

Live – Brown or Red

Luminaire Wire / Terminal Block

Blue or N

Brown or L

6. Ensure the wires are secure and no bare wires are exposed.

NOTE: This is a Class II product and must be maintained during wiring and installation.

7. Install the terminal box cover and grommet back onto the terminal box and secure by tightening the screws. (Fig. 2)
8. Install the cabinet by hanging it onto the mounting brackets. (Fig. 3)
9. Use a spirit level (not included) to check if the cabinet is level. If the cabinet is not level, remove the covers from the holes inside the cabinet. Adjust the cabinet by inserting the screwdriver (not included) into the holes and turn the screw clockwise or anti-clockwise:
 - The top hole is to adjust the cabinet inwards and outwards.
 - The bottom hole is to adjust cabinet up and down.

10. Install the top bracket (C x1) onto the cabinet to secure the cabinet onto the wall. (Fig. 4) Start by marking the screw holes onto the wall and then installing appropriately sized mounting screws and anchors (B x2). Then affix the bracket onto the cabinet using the smaller screws (D x2).

NOTE: This product must be attached securely onto the wall.

11. Install the mirrored doors onto the cabinet hinges. Ensure the button on the hinge is locked into position. (Fig. 5)
12. Adjust the hinges of the mirrored doors to ensure they are properly aligned. (Fig. 7, step 1)
 - If the height of the two doors is not level, you can loosen the screws G1 and G2 to adjust them up and down. Secure screws after leveling.
 - The gap between the door panel and cabinet can be adjusted by twisting screw G3.
 - The gap between the two doors can be adjusted by twisting screw G4.
13. Once the mirrored doors are properly aligned, the hinge brackets can be further secured by adding 2x smaller screws (D1 and D2) into the additional bracket holes for each hinge. (Fig. 7, step 2)
14. Clean the mirror and cabinet with a soft damp cloth. Ensure the product does not come in contact with corrosive chemicals/solvents or abrasive cleaners etc. (Fig. 6)
15. After the installation is complete, turn the power to the circuit back ON and test all product functions.

NOTE: The maximum load capacity of the cabinet is 2kg per shelves.

1

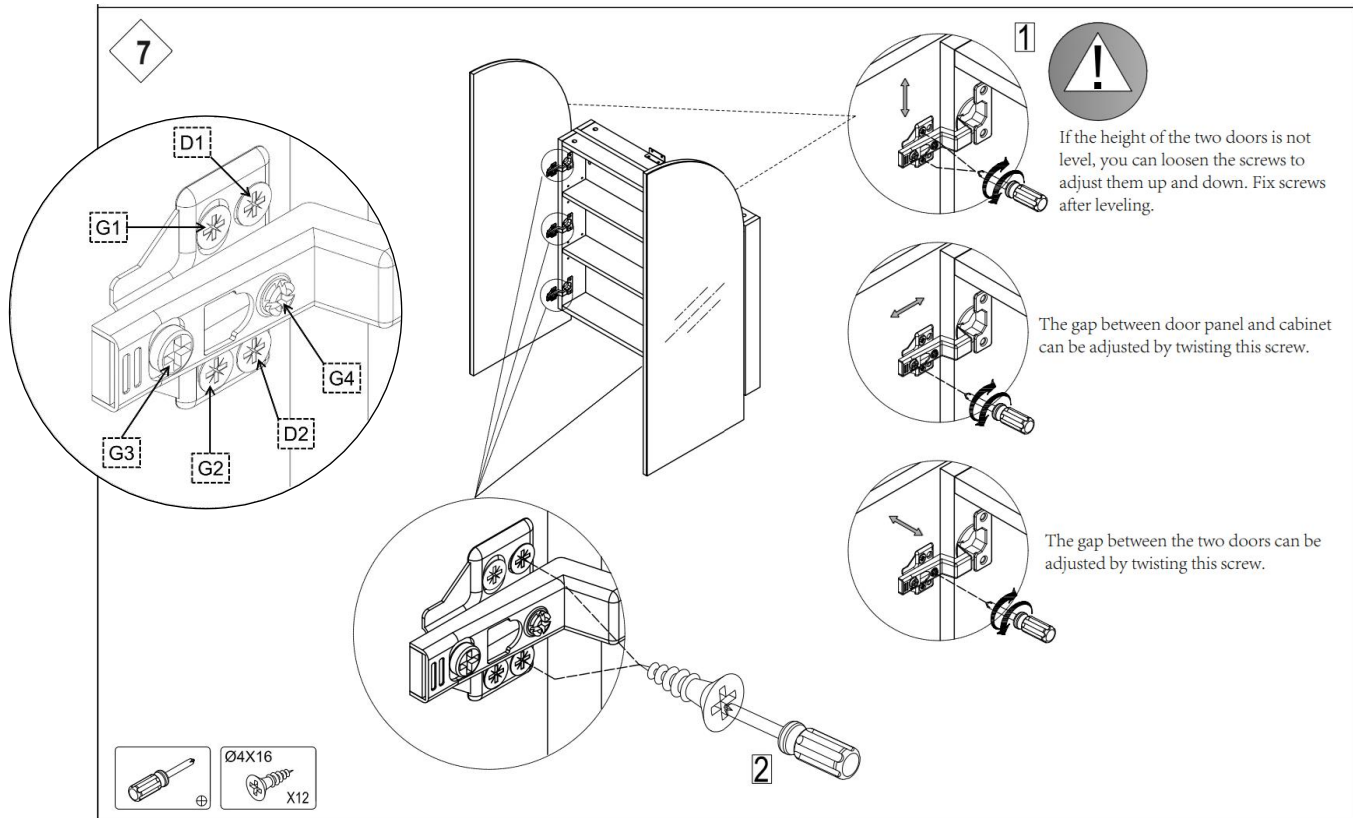
2

3

4

5

6



Safety Tips

- Always ensure the power is OFF and the product has cooled down before performing any maintenance, cleaning, or making any adjustment to the product.
- To avoid injury or damage to the product, ensure that power leads and screws are secure before connecting the power.
- Select a suitable location away from liquids and hazards.
- To clean, wipe with a soft damp cloth. Do NOT soak or immerse the product in water or other liquids.
- Ensure that the product does not come in contact with corrosive chemicals/solvents or abrasive cleaners etc.
- The light source of this product is not replaceable; when the light source reaches its end of life, the whole product shall be replaced. There are no serviceable parts, do not attempt to dismantle or open the product.

Specifications

SKU #	198121
Rated Voltage	220-240V~ 50Hz
Rated Wattage	26W
Insulation Class	Class II
LED Specs	Non-dimmable, CRI>90, 825 lumens, 3000K Warm-White
IP Rating	IP44
Weight	37kg Max. (35kg - Product weight, 2kg - Maximum load capacity of the cabinet per shelves)
Dimensions	H:1200mm W:900mm E:170mm