



LucciAR

PARSEC

SMALL DC EXHAUST FAN WITH LED LIGHT

SKU# 200082

- **INSTALLATION**
- **OPERATION**
- **MAINTENANCE**
- **WARRANTY INFORMATION**

CAUTION

**READ INSTRUCTIONS CAREFULLY FOR SAFE
INSTALLATION AND FAN OPERATION.**

To ensure correct function and safety, please read and follow all instructions carefully before assembly, installation and use of this exhaust fan. Please keep instructions for future reference.

WARRANTY

- This exhaust fan is covered by a 3 year warranty. The warranty is from date of purchase, not the date of installation.
- Please retain proof of purchase for any warranty enquires.
- Warranty will be void if there is any damage due to improper usage or modification to the exhaust fan.
- Failure to comply with instructions in this manual may increase the risk of damage or injury and will void warranty.

SAFETY PRECAUTIONS

- Always ensure the power is OFF and the exhaust fan has cooled down before performing any maintenance, cleaning or making any adjustment to the exhaust fan.
- Ensure that the exhaust fan is switched off from the supply mains before removing the fascia.
- This appliance is not intended for use by persons (including children) with reduced physical, sensory or mental capabilities, or lack of experience and knowledge, unless they have been given supervision or instruction concerning use of the appliance by a person responsible for their safety.
- Children should be supervised to ensure that they do not play with the appliance.
- Do not allow any foreign object to enter the grille opening as which may damage the product.
- If the supply cord is damaged, it must be replaced by the manufacturer, it's service agent or similarly qualified persons to avoid any potential hazard.

INSTALLATION REQUIREMENTS

- Before installation, check the installation location in the ceiling has access to 2x socket outlets which are connected to a wall switch(es). If it does not, please contact a licensed electrician to arrange installation of the socket outlets and wall switch(es) before continuing. Refer to the circuit diagram section for more information. (Fig.3)
- All wiring and installation of the exhaust fan must adhere to the local council regulation and latest local and national wiring rules, eg. AS/NZS 3000 electrical installations. If unsure, contact a licensed electrician.
- This is a Class I product and must be earthed.
- This product is suitable for indoor use only.
- This product is to be installed so that the blades are more than 2.1 m above the floor.
- Before cutting a hole in the ceiling, check that there are no ceiling joists, etc. or electrical wiring above the desired mounting location.
- The mounting point must be able to support at least 2 times the weight of the exhaust fan.
- Ensure all the clearance values to structural building elements are maintained according to the clearance diagram in Fig. 2.
- Do not install the exhaust fan in canopies over stoves etc., as excessive heat will damage the product.
- This product is designed for installation in the flat ceiling only. Do not mount it on a sloping ceiling or a vertical wall.
- Any duct (not included) attached to the product must be installed horizontally in the ceiling and with the same height or lower than the exhaust fan.
- Ensure the duct (not included) is not bent otherwise the performance will be reduced.
- Where applicable, precautions must be taken to avoid the back-flow of gases into the room from the open flue of gas or other fuel-burning appliances.

- Do not allow any thermal insulation to cover any part of the rear of the appliance.
- Ensure the thermal insulation does not obstruct the airflow.
- There must be an adequate source of external air to ensure the rated performance. For exhaust fan optimum performance, volume of air being extracted should be equal to the amount of air entering the room. Air is drawn mostly from under a door, or an open window. If the bathroom or room is air-tight (door and windows shut), the exhaust will not perform well.
- The LED lighting of this appliance is designed to provide general lighting only. While it may be sufficient for most common tasks, others such as shaving or applying make-up may require additional lighting.

PARTS LIST

- Unpack your fan carefully. Remove all parts and hardware.

NOTE: Take care not to pull any electrical wires during unpacking as this may damage the connection.

- Lay out all the components on a smooth surface and make sure there are no components missing before assembling. If parts are missing, return the complete product to the place of purchase for inspection or replacement.
- Check whether the exhaust fan has been damaged during transport. Do not operate/install any product which appears damaged in any way. Return the complete product to the place of purchase for inspection, repair or replacement.
- Examine all parts, which should include the following (Fig.1):

- 1 Fan motor assembly x 1
- 2 Fascia with LED Light Panel x 1
- 3 Small Outlet nozzle (100mm) x 1
- 4 Large Outlet nozzle (150mm) x 1



Fig. 1

- Complete your exhaust fan installation by purchasing from our range of compatible Lucci Air flexible aluminium ducting and ducting accessories, which are sold separately:

Chosen Ducting Size	Flexible Alum Ducting (3m)	Ducting Clamps & Aluminium Tape	External Vent Covers
100mm	SKU# 209100	Clamp: SKU# 209112, Tape: SKU# 209114	Stainless Steel Vent with Mesh: SKU# 209103, Plastic Vent with Mesh: SKU# 209109, Louvred Plastic Wall Vent with Mesh: SKU# 209117
150mm	SKU# 209102	Clamp: SKU# 209113, Tape: SKU# 209114	Stainless Steel Vent with Mesh: SKU# 209106, Plastic Vent with Mesh: SKU# 209111, Louvred Plastic Wall Vent with Mesh: SKU# 209118

CLEARANCE REQUIREMENTS

Before installation, please plan and check the ceiling space to make sure that there are no obstructions such as ceiling joists and there is sufficient height clearance for the motor housing. Refer to the below Figure 2 for the clearance requirements.

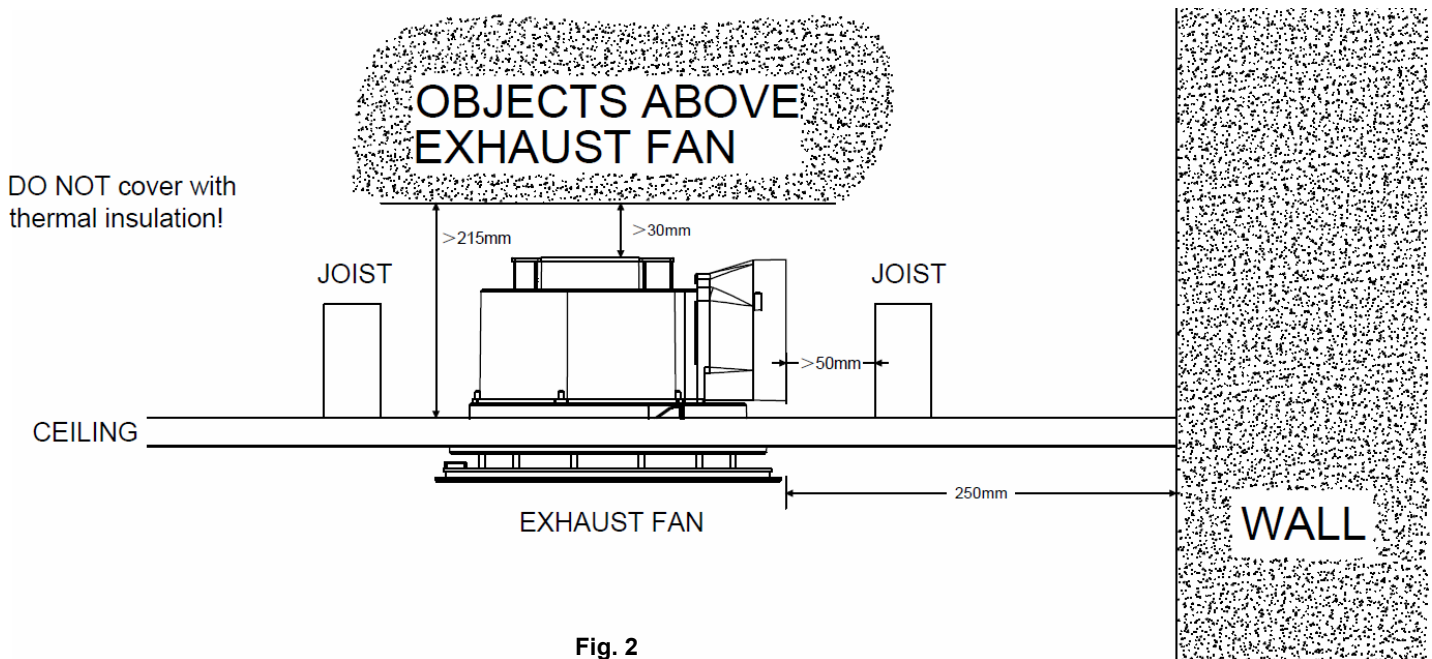


Fig. 2

INSTALLATION INSTRUCTIONS

NOTE: Before installation, it is recommended to test the exhaust fan by plugging into an available socket outlet prior to installation to ensure the product is working correctly.

Switch off the mains power before commencing the below installation.

This fitting has been supplied with 2 separate cutout templates. For best results, please ensure the correct cutout template is selected for your chosen installation method.

INSTALLATION METHOD 1: Attaching ducting to the exhaust fan from within the ceiling cavity

1. Using the smaller 240mm Cut-out Template, mark and cut an installation hole into the ceiling (Picture A)

NOTE: Ensure clearance requirements listed in Fig. 2 above are met prior to cutting into the ceiling.

2. Install the appropriately sized ducting (not included, sold separately) and external vent (not included, sold separately) that is best suited for your installation setup.

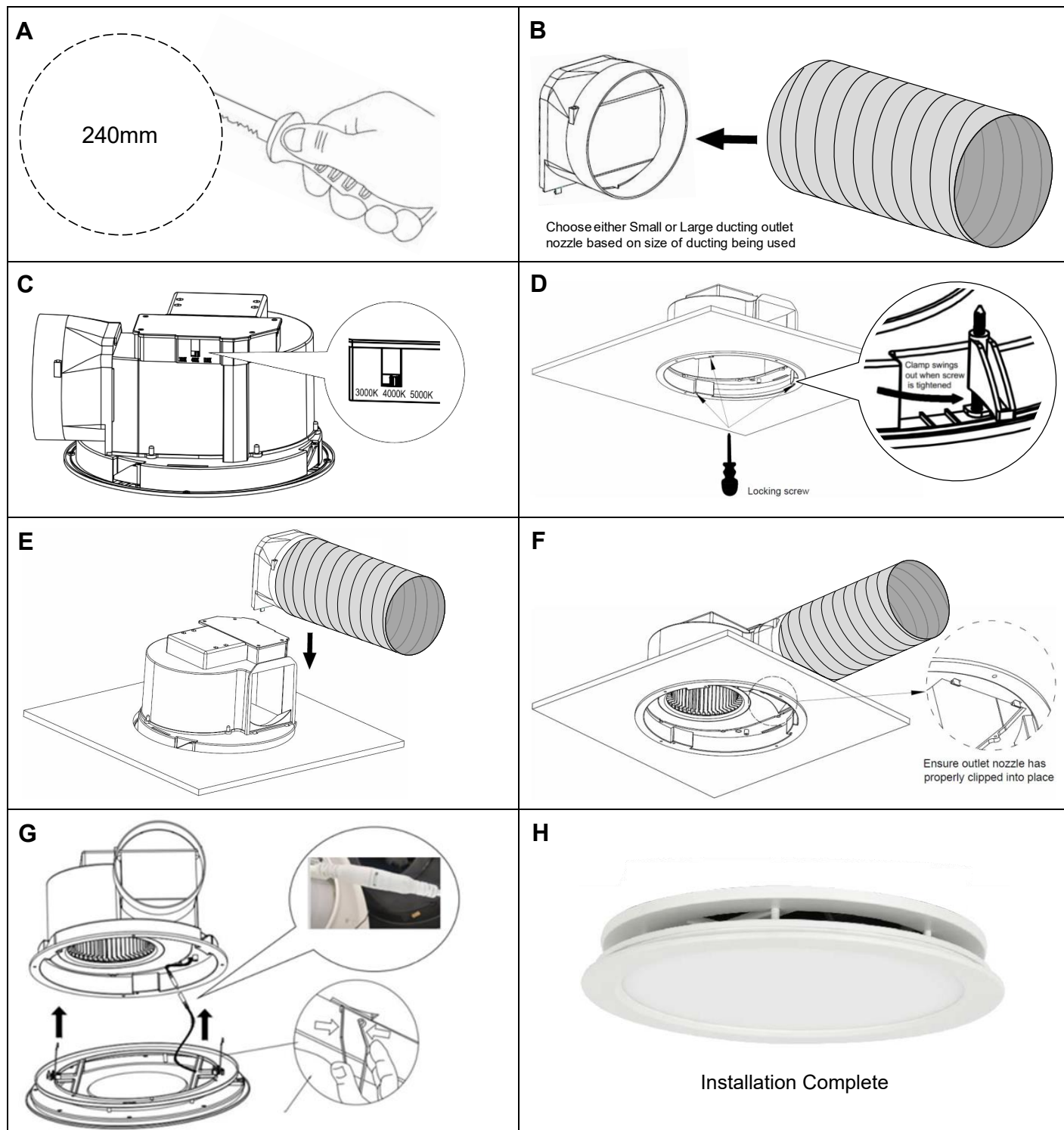
NOTE: For optimum performance, the 150mm sized ducting is highly recommended.

3. Attach the Small (100mm) or Large (150mm) outlet nozzle onto your installed ducting (not included) based on the ducting size being used, and place within the ceiling cavity near the cut-out hole (Picture B).
4. Select the desired colour temperature (3000K Warm White, 4000K Cool White or 5000K Daylight) of the LED Light Panel using the switch on the back of the luminaire. (Picture C)
5. Plug the power leads for both the Exhaust Fan and LED Light into available sockets within the ceiling cavity, and then fit the exhaust fan through the cut-out and into the ceiling.
6. Using a screwdriver, adjust the three mounting clips outwards and then tighten the screws until the mounting clips are clamped down to the ceiling tightly. (Picture D) If required, additional screws can be used to aid in holding the

unit in the ceiling. Screw holes are provided in the flange for this purpose.

7. From within the ceiling cavity, slide the chosen outlet nozzle onto the exhaust fan body until it clicks into place. (Picture E) Ensure the ducting outlet nozzle has been properly fitted by checking the fastenings from underneath the exhaust fan (Picture F)
8. Connect the LED Light Panel connector on the fascia to the connector on the exhaust fan, and then Install the fascia onto the exhaust fan body by fitting the spring clips into the slots within the fan body. (Picture G)
9. Switch on the power and test that both the exhaust fan and LED light are functioning properly.

INSTALLATION DIAGRAM: Attaching ducting to the exhaust fan from within the ceiling cavity



INSTALLATION METHOD 2: Attaching ducting to the exhaust fan prior to installing into the ceiling

1. Using the larger 255mm Cut-out Template, mark and cut an installation hole into the ceiling (Picture A)

NOTE: Ensure clearance requirements listed in Fig. 2 above are met prior to cutting into the ceiling.

2. Install the appropriately sized ducting (not included, sold separately) and external vent (not included, sold separately) that is best suited for your installation setup.

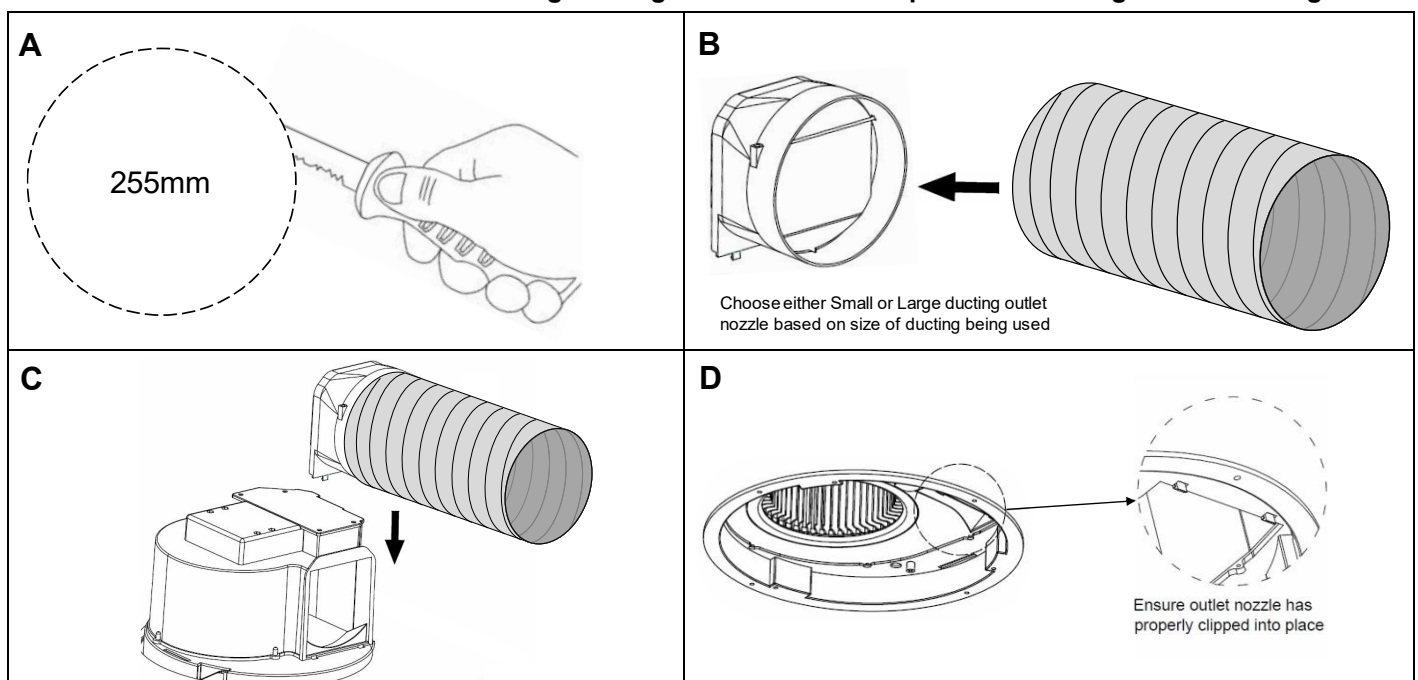
NOTE: For optimum performance, the 150mm sized ducting is highly recommended.

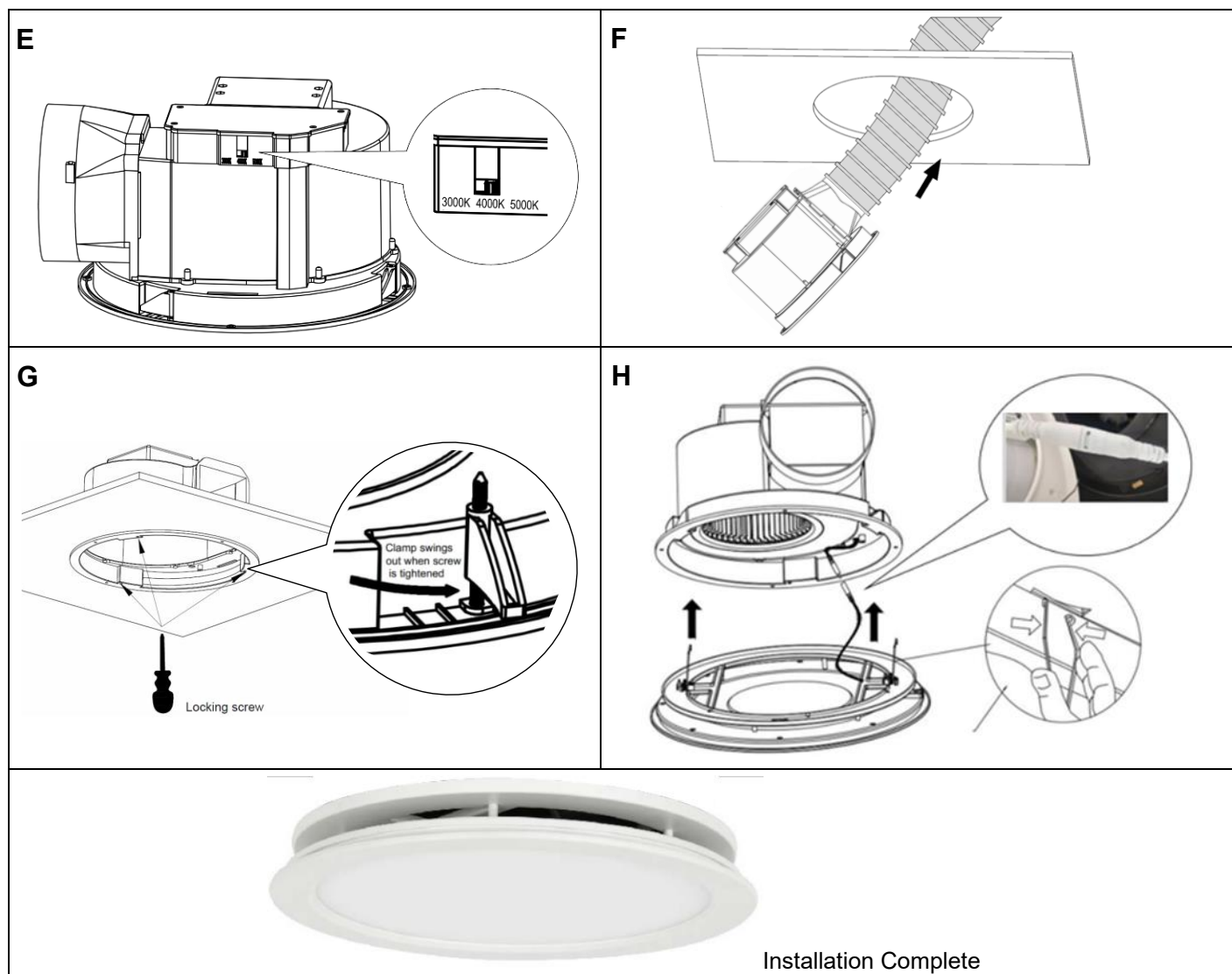
3. Attach the Small (100mm) or Large (150mm) outlet nozzle onto your ducting (not included) based on the ducting size being used, and feed through the cut-out hole from the ceiling cavity. (Picture B)
4. Slide the chosen outlet nozzle onto the exhaust fan body until it clicks into place. (Picture C) Ensure the ducting outlet nozzle has been properly fitted by checking the fastenings from underneath the exhaust fan. (Picture D)
5. Select the desired colour temperature (3000K Warm White, 4000K Cool White or 5000K Daylight) of the LED Light Panel using the switch on the back of the luminaire. (Picture E)
6. Plug the power leads for both the Exhaust Fan and LED Light into available sockets within the ceiling cavity, and then fit the exhaust fan through the cut-out and into the ceiling. (Picture F) Ensure Ducting doesn't become compressed or twisted when fitting the exhaust fan into the ceiling.

NOTE: Due to the larger sized cut-out, the exhaust fan body will sit loosely within the hole. Ensure the exhaust fan body has been positioned within the centre of the cut out with no cut edges exposed prior to tightening the mounting clips in the following step.

7. Using a screwdriver, adjust the three mounting clips outwards and then tighten the screws until the mounting clips are clamped down to the ceiling tightly. (Picture G)
8. Connect the LED Light Panel connector on the fascia to the connector on the exhaust fan, and then Install the fascia onto the exhaust fan body by fitting the spring clips into the slots within the fan body. (Picture H)
9. Switch on the power and test that both the exhaust fan and LED light are functioning properly.

INSTALLATION DIAGRAM: Attaching ducting to the exhaust fan prior to installing into the ceiling





CIRCUIT DIAGRAM

NOTE: The appliance is provided with flex cord and plug. Check the installation location in the ceiling has access to 2x socket outlets which are connected to wall switch(es). If it does not, please contact a licensed electrician to arrange installation of the socket outlets and wall switch(es).

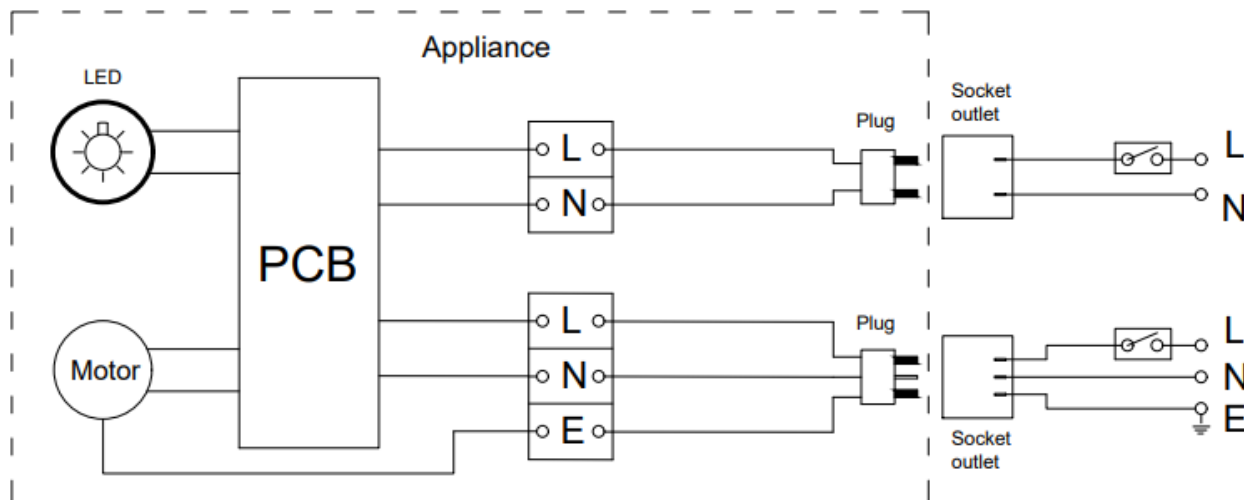


Fig. 3

CARE & CLEANING

NOTE: Always turn OFF the power at the mains switch before performing any maintenance or attempting to clean your fan.

- Clean the fascia and blades regularly. To clean, wipe with a damp clean cloth with NO organic solvents or cleaners.
- Do not soak or immerse your fan in the water or other liquids. It could damage the product and create the possibility of an electrical shock.

Specifications	
SKU #	200082
Colour	White
Insulation class	Class I
IP rating	IP24 after installation (underneath ceiling only)
Rated voltage	220-240V~, 50Hz
Fan Rated wattage	20W
Light Wattage	14W
Lumens	900 lumens
Colour Temperature	CCT 3000K/4000K/5000K via Toggle switch on back of product.
Max. Airflow	450M ³ /H
Cut-out size	<p>Φ240mm or Φ255mm*</p> <p>*Depending on installation method being used</p>
Overall dimensions	Dia: Φ295mm H:219mm
Size of faceplate	Round (Φ295mm)
Exhaust outlet / Duct size	Φ100mm or Φ150mm with interchangeable ducting outlet nozzles
Blade diameter	Φ128mm
Weight	2kg



BATHROOM EXHAUST FAN WARRANTY CARD

Our goods come with guarantees that cannot be excluded under the Australian Consumer Law. You are entitled to a replacement or refund for a major failure and compensation for any other reasonably foreseeable loss or damage. You are also entitled to have the goods repaired or replaced if the goods fail to be of acceptable quality and the failure does not amount to a major failure.

Every Lucci Air Exhaust fan is thoroughly inspected and tested before being released for sale. In addition to any warranties or conditions implied by applicable Statute or Regulation, Lucci Design warrants all of its bathroom heaters against defective workmanship and faulty materials for thirty six (36) months from the original date of purchase. Lucci Design undertakes, at its option, to repair or replace, free of charge, each product or part thereof subject to the below warranty conditions;

- 1) The fan or relevant part has not been modified, subjected to misuse, neglect, or been involved in an accident.
- 2) The repairs are not required as a result of normal wear and tear.
- 3) The product was installed by a licenced electrical contractor in accordance with this instruction manual.
- 4) No solid state speed control device has been used with the appliance.
- 5) A copy of the original receipt of purchase is presented.
- 6) Globes supplied are not covered by this warranty

Lucci Design cannot be held responsible for any repair other than those carried out by it or one of its Authorised Service Agents. Please keep this warranty form in a safe place. This form must be produced in the event of service being required.

IN THE EVENT OF SERVICE BEING REQUIRED, PLEASE CALL
THE LUCCI FAN WARRANTY HOTLINE ON 1800 602 243 BETWEEN
9AM & 5PM (E.S.T) MONDAY TO FRIDAY ENSURING THAT YOU

HAVE THE FOLLOWING DETAILS ON HAND:

MODEL (SKU) NUMBER: _____

DATE OF PURCHASE: _____

RETAILER: _____

RECEIPT NUMBER: _____

INSTALLED BY: _____

LICENCE # : _____ PH: _____

DESCRIPTION OF FAULT: _____
