

METT INLINE 600MM LINEAR VENT

SKU# 209048

NOTE: This instruction manual is the installation directions for the METT VENT only.

The Exhaust fan is sold separately, refer to the instruction manual included with the Exhaust fan for installation directions.

Thank you for purchasing this quality Lucci product. To ensure correct function and safety, please read and follow all instructions carefully before assembly, installation, and use of this product. Please keep instructions for future reference.

Warranty

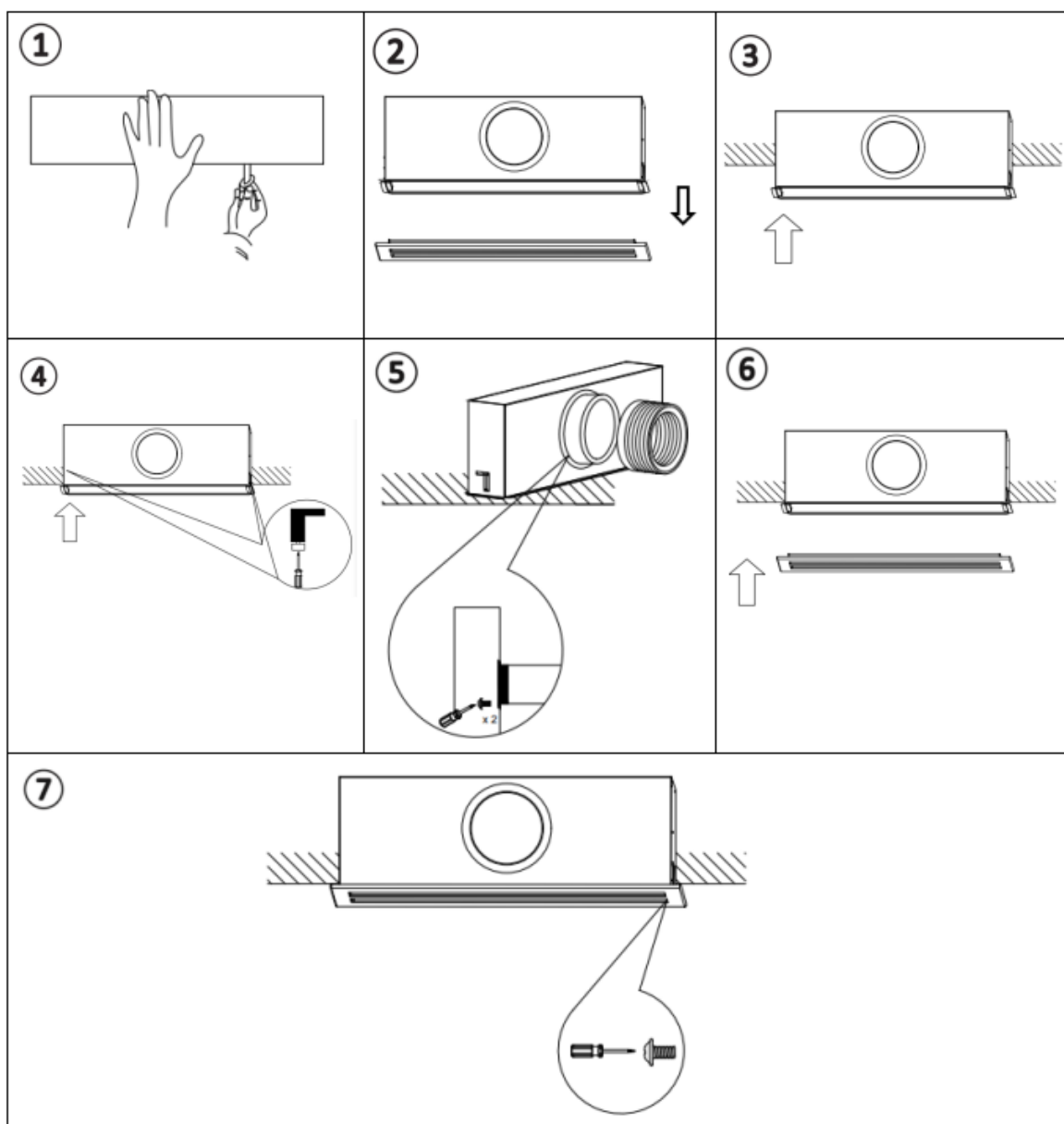
- This product is covered by a 2-year warranty. The warranty is from date of purchase, not the date of installation.
- Please retain the proof of purchase for any warranty enquiries.
- Warranty will be void if there is any damage due to improper usage or modification to the product.
- Failure to comply with the instructions in this manual may increase the risk of damage or injury and will void the warranty.

Installation Requirements

- This installation instruction is for the Mett vent only. No electrical wiring connection or disconnection is required for installation of the finishing kit. The service of a licensed electrician is not required.
- The exhaust fan (sold separately) must be assembled and installed by a licensed electrician.
- Lay out all the components on a smooth, non-scratch surface and make sure no components are missing before assembling.
If parts are missing, return the complete product to the place of purchase for inspection or replacement.
- Check whether the product has been damaged during transport. Do not operate/install any product which appears damaged in any way. Return the complete product to the place of purchase for inspection, repair or replacement.
- Ensure power to the circuit you are working on has been switched OFF before commencing any electrical work.

Installation Directions

1. Remove all packaging material from the product and be careful not to throw away accessories that may be hidden within the packaging material.
2. Check whether the product has been damaged during transport. Do not operate/install any product which appears damaged in any way. Return the complete product to the place of purchase for inspection, repair or replacement.
3. Cut an installation hole into the ceiling according to cut-out size specified in the specification section. (Fig.1)
4. Remove the fascia from the Mett vent body. (Fig.2)
5. Insert the Mett vent body (without the fascia) into the installation hole (step 3) and push up. (Fig.3)
6. Push the two mounting clips out of the Mett vent body to hold the Mett vent body onto the ceiling. Use a screwdriver to tighten the two screws on the mounting clips to secure the Mett vent onto the ceiling. Check and ensure the mounting clips are clamped onto the ceiling tightly. (Fig.4)
7. Stretch the duct through the hole of Mett vent body and attach them to Mett vent body. Secure the duct by lock the screws. (Fig.5)
8. Reinstall the fascia back onto the Mett vent body. (Fig.6)
9. Secure the fascia by lock the screws. (Fig.7)



Safety Tips

- Always ensure the power is OFF before performing any maintenance, cleaning, changing the globe or making any adjustment to the product.
- To avoid injury or damage to the product, ensure that power leads and screws are secure before connecting the power.
- Select a suitable location away from liquids and hazards.
- To clean wipe with a soft damp cloth. Do NOT soak or immerse the product in water or other liquids.
- Ensure that the product does not come in contact with corrosive chemicals/solvents or abrasive cleaners etc

Specifications

SKU #	209048
Colour	White
Weight	4 kg
Exhaust outlet / Duct size	Φ 150mm
Cut-out size	L:605mm x W:100mm
Dimensions	L:635mm W:126mm H:215mm Max.