



## **LUCCI AIR MAXI AIR PURIFIER**

- **INSTALLATION**
- **OPERATION**
- **MAINTENANCE**
- **WARRANTY INFORMATION**

### **CAUTION**

**READ INSTRUCTIONS CAREFULLY FOR SAFE  
INSTALLATION AND OPERATION.**

## THANK YOU FOR PURCHASING

Thank you for purchasing this quality Lucci product. To ensure correct function and safety, please read and follow all instructions carefully before assembly, installation and use of this appliance. Please keep instructions for future reference.

## WARRANTY

- This product is covered by a 2-year warranty. The warranty is from date of purchase, not the date of installation.
- Please retain the proof of purchase for any warranty enquires.
- Warranty will be void if there is any damage due to improper usage or modification to the product.
- Failure to comply with the instructions in this manual may increase the risk of damage or injury and will void the warranty.

## SAFETY PRECAUTIONS

- Always ensure the power is OFF and the appliance has cooled down before performing any maintenance, cleaning or making any adjustment to the appliance.
- This product is suitable for indoor use only.
- This appliance is not intended for use by persons (including children) with reduced physical, sensory or mental capabilities, and lack of experience and knowledge, unless they have been given supervision or instruction concerning use of the appliance by a person responsible for their safety.
- Children should be supervised to ensure that they do not play with the appliance.
- **WARNING:** If unusual oscillating movement is observed, immediately stop using the product and contact the manufacturer, its service agent or suitably qualified persons.
- The supply cord cannot be replaced. If the cord is damaged, the appliance should be scrapped.
- Do not block the air inlet and outlet.
- Do not try to insert fingers or other foreign objects into the air outlet/inlet to prevent physical damage.
- This product can not replace normal ventilation, regular vacuum cleaning and the use of range hood while cooking.
- Ensure the appliance is placed on a stable and horizontal surface.
- There must be at least 300mm of free space on each side of the product. There must be at least 500mm of free space above the appliance.
- Do not use the appliance near a gas appliance, heating appliance or fireplaces.
- Do not spray insecticide, perfume or any other flammable spray around the product.
- Do not use the appliance in surroundings with high humidity, such as a bathroom, toilet, or kitchen.
- The appliance does not remove carbon monoxide. Do not use as a safety ventilation device in the presence of hazardous chemicals.
- Do not move the appliance when it is operating. During the event of the appliance being knocked over, unplug the main power immediately.
- Ensure the filter and its cover are properly installed after replacement. Only use the specified filters of this appliance.

## PARTS LIST

- Unpack the appliance carefully. Remove all packaging material, parts and hardware.
- Lay out all the components on a smooth surface and make sure no components are missing before assembling. If parts are missing, return the complete product to the place of purchase for inspection or replacement.
- Check whether the appliance has been damaged during transport. Do not operate/install any product which appears damaged in any way. Return the complete product to the place of purchase for inspection, repair or replacement.
- Examine all parts, which should include the following

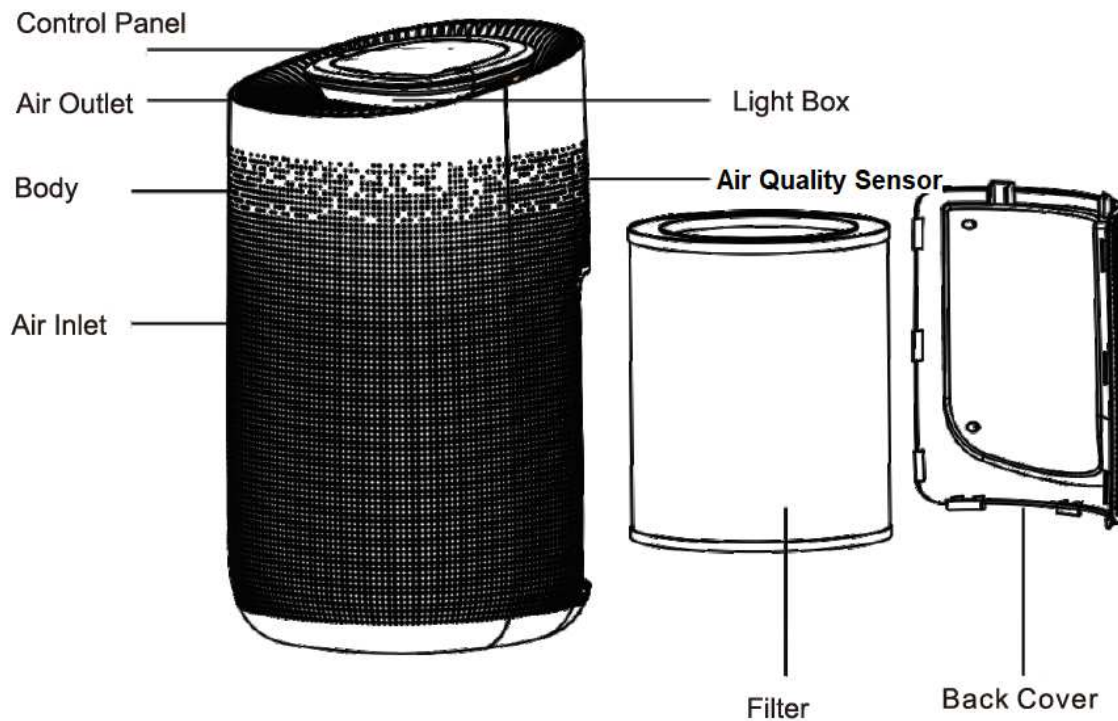


Fig. 1

- 1 Air purifier body (including Air outlet, Control panel, Body, Indicator, Air quality sensor, Air inlet) x 1
- 2 Filter x 1
- 3 Back cover x 1

## OPERATION DIRECTION

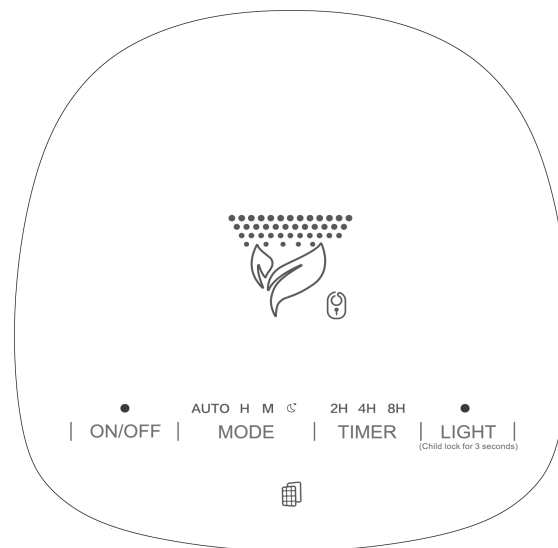


Fig. 2

### ON/OFF

- 1) Touch the ON/OFF button to turn on the appliance. The appliance will enter the default medium-wind-speed mode.
- 2) The colours of the indicator light will cycle through Blue-Cyan-Green-Yellow-Orange-Red-Purple for 30s during the start-up period.
- 3) After the start-up period, the light will indicate accordingly to the air quality.

**NOTE: Blue means the best air quality, while purple means the worst.**

- 4) Touch the ON/OFF button again. The appliance will turn off, and all indicators will be off.

**NOTE: The appliance will memorise the working modes when turning off without unplugging from the mains power.**

### TIMER

- 1) Once the power is turned on, press the timer button to set the 2H, 4H, and 8H timer in sequence. The relevant indicator will be on.
- 2) Press the timer button for the fourth time, the timer indicator will turn off, and the appliance will exit the timer mode and operate continuously.

### MODE

#### Wind Speed Button

- 1) Once the power is turned on, press the wind speed button to set the Medium/High/Auto/Sleep wind speed in sequence. The relevant indicator will be on.

**NOTE: If it is set to the Auto mode, the wind speed will automatically adjust according to the detected air quality.**

## LIGHT

### Light/Child lock Button

- 1) Press the light button once, and the night light will be on. The light will change between Soft-Standard-Off mode.
- 2) Long press the button for 3s then the appliance will enter the child-lock mode. All buttons are locked and can not be operated.
- 3) Long press the button for 3s again to exit the child-lock mode.



### Reminder of Replacing Filter

When the appliance reaches 2200-hour operation time, the reminder will flash in red, which means the filter requires replacing; **once the filter has been replaced, press and hold the power button for about 7 seconds to reset the reminder.**

**NOTE: It is not required to be reset when using the appliance for the first time.**

**FILTER INSTALLATION / REPLACEMENT DIRECTION**

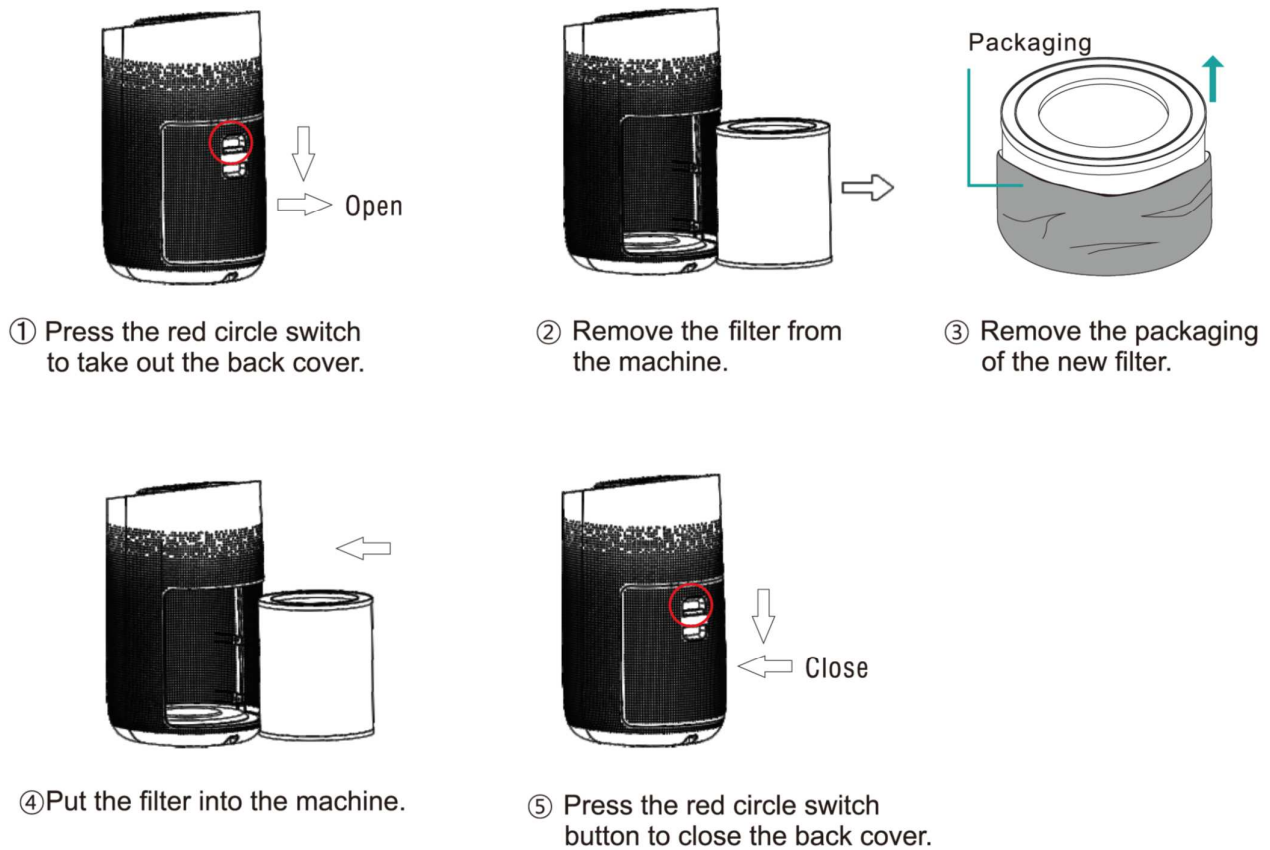


Fig. 3

1. Open the back cover by pressing the tab switch;
2. Take the filter out of the appliance body;
3. Remove the packaging from the new filter;
4. Install the new filter back into the appliance body;
5. Install the cover back onto the appliance body. Check and ensure the back cover is secured.

**NOTE:**

- **Unplug the appliance from the mains power before performing the filter installation/replacement;**
- **Packaging of the new filter MUST BE removed before use;**
- **Only use the specified filter supplied and designed for this product.**

**CARE & CLEANING**

**NOTE: Always turn OFF the power at the mains switch before performing any maintenance or attempting to clean your appliance.**

- Clean the inlet & outlet of the appliance regularly. To clean, wipe with a damp clean cloth with NO organic solvents or cleaners.
- Do not soak or immerse the product in the water or other liquids. It could damage the product and create the possibility of an electrical shock.
- Use a dry cloth, gently wipe off any dust on the filter regularly. Do not wash the filter with water.
- Do not try to use the vacuum cleaner to clean the filter. Replace filter with a new one if the indicator to replace the filter is on.

**FAQ & Trouble Shooting**

PROBLEM	POSSIBLE CAUSE	SUGGESTED SOLUTION
Does not work	<ul style="list-style-type: none"> <li>- Is it plugged into the power socket?</li> <li>- Is the filter replacing indicator flashing in red?</li> </ul>	<ul style="list-style-type: none"> <li>- Check and plug into the power socket properly.</li> <li>- Replace with the new filter.</li> </ul>
Poor performance	<ul style="list-style-type: none"> <li>- Is there any dust on the surface of the pre-filter?</li> <li>- Is there anything blocking the air inlet/outlet?</li> </ul>	<ul style="list-style-type: none"> <li>- Clean the dust of the filter with a dry cloth.</li> <li>- Keep the required clearance.</li> </ul>
Significant noise	<ul style="list-style-type: none"> <li>- Is there anything blocking the air inlet/outlet?</li> <li>- Is the appliance tilted?</li> </ul>	<ul style="list-style-type: none"> <li>- Keep the required clearance.</li> <li>- Place the appliance on the flat &amp; stable surface.</li> </ul>
Unpleasant smell	<ul style="list-style-type: none"> <li>- It is a normal phenomenon that the machine emits the smell of plastic for the first time of use.</li> <li>- Is there any dust on the surface of the pre-filter?</li> </ul>	<ul style="list-style-type: none"> <li>- Turn on the appliance for a couple of hours.</li> <li>- Clean the dust of the filter with a dry cloth.</li> </ul>
The indicator to replace the filter is still flashing after filter replacement	<ul style="list-style-type: none"> <li>- The reminder is not reset.</li> </ul>	<ul style="list-style-type: none"> <li>- Press the power button for 7s to reset.</li> </ul>

**NOTE: If the problem can not be solved by the suggested solutions, contact the supplier for further instruction. DO NOT try to disassemble the appliance in any circumstances.**

Specifications	
SKU #	213082
Model #	MAX
Colour	White
Insulation class	Class II
IP rating	IP20
Rated voltage	220-240V~, 50/60Hz
Rated wattage	50W
Max. Airflow/CADR	400M <sup>3</sup> /H
Coverage Area	≤ 50m <sup>2</sup>
Filter type	H13 HEPA ALL IN ONE (Included, replaced filter sold separately)
Filter life	2200 hours
Noise level	< 56 dB at highest speed
Timer	2/4/8 hours
Overall dimensions	H: 497mm L: 303mm W: 270mm
Weight	4.6kg



## LUCCI AIR WARRANTY DETAIL

LUCCI WARRANTY HOTLINE- 1800 602 243

### **THIS WARRANTY IS VALID IN AUSTRALIA ONLY**

In the event of service being required, please call the Lucci Air Warranty Hotline on 1800 602 243 between 9am & 5pm (EST) Monday to Friday. Please make sure you have all the fan details filled out at the end of the manual before making the call.

Every Lucci fan is thoroughly inspected and tested before being released for sale. In addition to any warranty rights or conditions under statutory regulations, Lucci warrants all of its fans against defective workmanship and faulty materials for twenty four (24) months from the date of purchase. Lucci undertakes, at its option, to repair or replace, free of charge, each product or part thereof on condition that;

1. The fan or relevant part has not been subjected to misuse, neglect, or been involved in an accident.
2. The repairs are not required as a result of normal wear and tear.
3. The product was installed by a licensed electrical contractor.
4. A copy of the original receipt of purchase is presented.
5. 12 month warranty applies when used in any non-domestic applications.
6. This warranty does not cover stains, scratch and scuff marks, or dents if the product is purchased through a factory outlet or to refurbished items.

Our goods come with guarantees that cannot be excluded under the Australian Consumer Law. You are entitled to a replacement or refund for a major failure and compensation for any other reasonably foreseeable loss or damage. You are also entitled to have the goods repaired or replaced if the goods fail to be of acceptable quality and the failure does not amount to a major failure.

**Lucci Design cannot be held responsible for any repair other than those carried out by it or one of its Authorised Service Agents. Please keep this warranty information in a safe place. This information must be produced in the event of service being required.**

**Distributed by:**

Beacon Lighting  
140 Fulton Drive  
Derrimut, Victoria, 3026  
Australia  
Ph +613 9368 1000  
Fax +613 9360 9332  
Email: [warranty@beaconlighting.com.au](mailto:warranty@beaconlighting.com.au)

## LUCCI AIR WARRANTY INFORMATION

LUCCI WARRANTY HOTLINE- 1800 602 243

Complete and retain this form for your personal records and warranty purposes.

NAME.....

ADDRESS.....

.....POSTCODE.....

MODEL NUMBER.....

PO NUMBER or DATECODE ..... (PO# + DATECODE Sticker here)

DATE OF PURCHASE.....

INSTALLING LICENSED ELECTRICIAN.....

.....

LICENCE No.....

ATTACH PROOF OF PURCHASE HERE

THIS COMPLETED DETAIL PAGE SHOULD BE PRODUCED AND FAXED TO THE WHOLESALE OR THEIR AUTHORISED AGENTS BEFORE OBTAINING WARRANTY SERVICE