

**SENTINEL EYELID LIGHT
with VERSION 2 connector**

SKU# 220309

Rated Voltage 12V 

To ensure correct function and safety, please read and follow all instructions carefully before assembly, installation and use of this luminaire. Please keep the installation instructions for future reference.

NOTE: This installation instruction applies to the 12V side of the luminaire only.

This luminaire is rated 12V and is classified as ELV (Extra Low Voltage).

This luminaire can be DIY and does not require any electrical connection or disconnection.

Do not plug this luminaire directly into 240V.

When working with 240V, a licensed electrician is required.

The assistance of a technical person with the correct tools may be required to complete the installation.

The Lucci wiring kit (SKU# 220826, 220827) and Lucci transformer (SKU# 220818, 220819, 220829) are sold separately.

Warranty

- This luminaire is covered by a 12-month warranty valid for in-store replacement or refund only.
- The warranty period starts from the date of purchase, not the date of installation.
- Please retain the proof of purchase for any warranty enquiries.
- Warranty will be void if there is any damage due to improper usage or modification to the luminaire.
- Failure to comply with the instructions in this manual may increase the risk of damage or injury and will void the warranty.

Installation Requirements

- All wiring and installation of the luminaire must adhere to the latest local and national wiring rules. e.g. AS/NZS 3000 Electrical installations. If unsure, please contact a licensed electrician.
- The luminaire must not be used if the protective lamp shade has been cracked or damaged.
- Do not exceed the maximum wattage rating.
- Select a suitable location for installation:
 - This luminaire is suitable for step light or recessed in-ground installation only. Not suitable for ceiling installations.
 - This luminaire is protected against water penetration to IP65 and IP67 – Ground recessed luminaires Standards. This is resistance to water jets for 15mins from all directions by means of a hose and nozzle from 3m away and temporary immersion in 150mm depth of water for 30mins.

NOTE: Ensure the luminaire is positioned in a location where the water can be easily drained away.

The luminaire is not designed to be immersed in water for long periods.

- The wiring kit and connectors are not suitable for underground installation without protection from water or damp conditions.

NOTE: Ensure the wiring kit and connectors are positioned in a location where the water can be easily drained away. They are not designed to be immersed in water.

NOTE: The installation location may require a gravel substrate to help with water drainage, to prevent the wiring kit and connectors being submerged in water after heavy rain or from watering the garden.

- The mounting point must support 2 times the weight of the luminaire.
- Thermal insulation material must NOT be abutted or cover the luminaire.
- Ensure there is no thermal insulation, loose fill insulation, loose combustible materials, leaves etc. near or covering the luminaire inside the wall. If there is, a barrier or guard is required to prevent anything from covering or abut to the luminaire.

- Take care not to pull any electrical wires during unpacking as this may damage the connection.
- Lay out all the components on a smooth surface and make sure there are no components missing before assembling. If parts are missing, return the complete product to the place of purchase for inspection or replacement.
- Check whether the luminaire has been damaged during transport. Do not operate/install any product which appears damaged in any way. Return the complete product to the place of purchase for inspection, repair or replacement.
- Ensure power to the circuit you are working on has been switched OFF before commencing any electrical work.

Installation Directions

1. Remove all packaging material from the product and be careful not to throw away accessories that may be hidden within the packaging material.
2. Cut an installation hole of $\varnothing 70\text{mm}$ into the mounting point. (Fig.1)
3. Install the moulded box into the installation hole. (Fig.2)
4. Remove the shade from the luminaire.
5. Install a globe (not included) into the lamp holder. Do not exceed the maximum wattage rating. Do not touch the globe with bare hands, use clean gloves or tissue. Using bare hands may reduce the life of the globe. (Fig.3)
6. Install the shade back onto the luminaire. There will be a small gap between the shade and luminaire, this is normal and the luminaire will retain its IP65 rating. (Fig.4)

Proceed to step 7.

7. **INSTALLATION USING V2 CONNECTOR - LUCCI WIRING KIT AND TRANSFORMERS (both sold separately)**

Connect the luminaire to the Lucci wiring kit (SKU# 220826, 220827 - sold separately). Ensure the connector is fully tightened. (Fig. 5) **NOTE: The wiring kit is rated for Max. 80VA load only.**

Proceed to step 8.

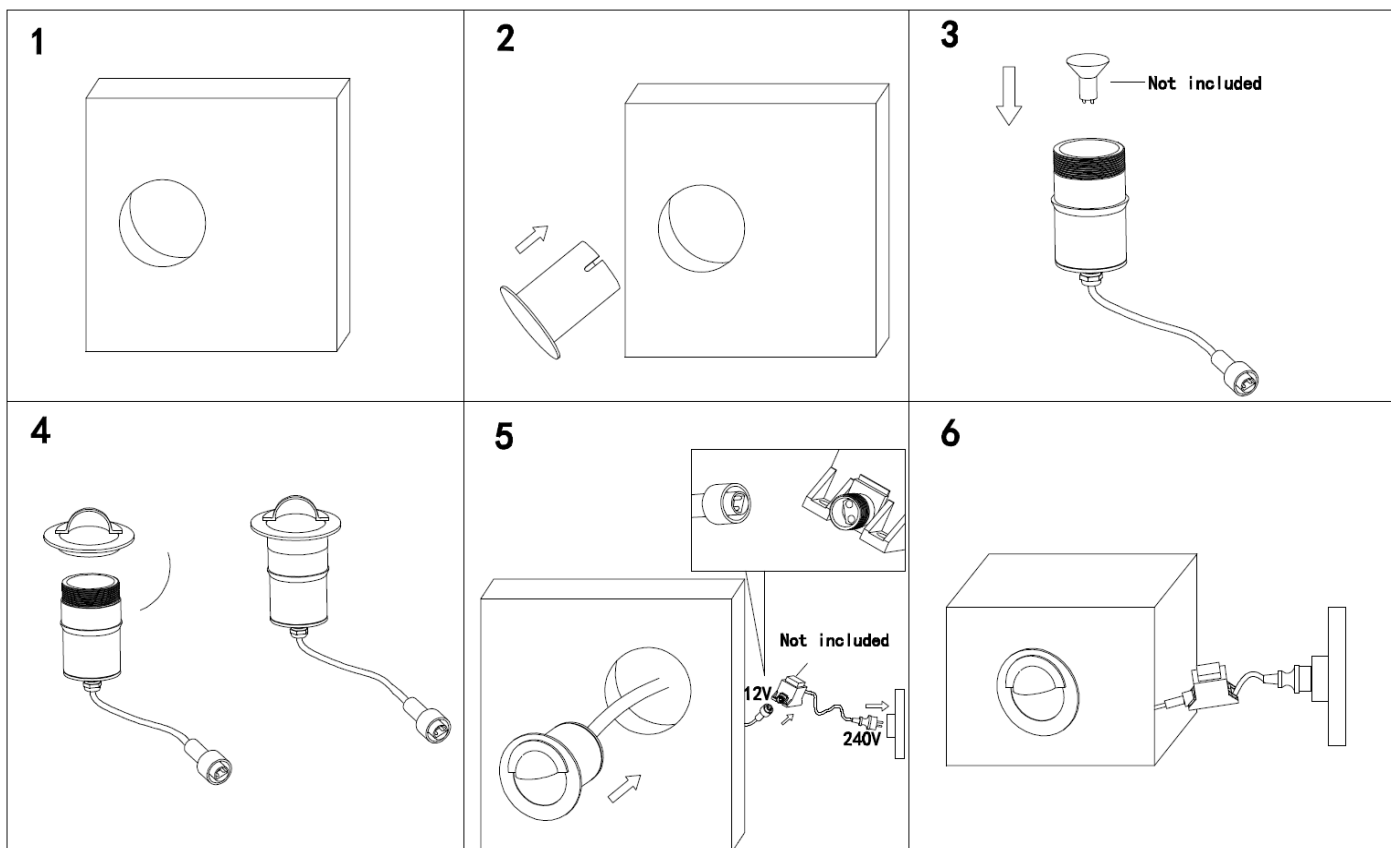
7. **INSTALLATION USING OTHER WIRING AND TRANSFORMER (not included)**

Remove the 12V bi-pin connector from the cable for hard wiring or alternative wiring method and power supply system. This luminaire is rated IP65, this must be maintained during wiring and installation.

Ensure that the wires are secure and no bare wires are exposed. Ensure all wiring and the transformer used are appropriately rated and suitable for the location used. **If unsure, please contact a licensed electrician.**

Proceed to step 8.

8. Insert the luminaire into the plastic mounting bracket and ensure it is secure and does not come out easily.
9. Install the luminaire into the installation hole. (Fig. 5)
10. Check and ensure thermal insulation material must NOT be abutted or cover the luminaire. (Fig. 6)
Ensure all the clearance values are maintained during and after installation of this luminaire.
11. Switch on the luminaire to test all the lighting functions and enjoy your new luminaire. (Fig. 5 & 6)




RISK OF FIRE – BUILDING INSULATION MUST NOT COVER THIS LUMINAIRE.
WARNING – RISK OF OVERHEATING OR FIRE IF THE CLEARANCE DISTANCES ARE COMPROMISED.
 HCB=50mm MIC=20mm SCB=20mm SCI=20mm

Safety Tips

- Always ensure the power is OFF and the fitting has cooled down before performing any maintenance, cleaning, changing the globe or making any adjustment to the fitting.
- The external flexible cable or cord of this luminaire cannot be replaced; if the cable or cord is damaged, the luminaire shall be destroyed.
- The luminaire must not be used if the protective shield has been cracked. Replace any cracked protective shield before using the luminaire.
- Do not touch the globe with bare hands. Use a clean cloth, gloves or a tissue.
- To avoid injury or damage to the luminaire, ensure that power leads and screws are secure before connecting the power.
- To clean, wipe with a soft damp cloth. Do NOT soak or immerse the luminaire in water or other liquids.
- Ensure that the luminaire does not come in contact with corrosive chemicals/solvents or abrasive cleaners etc.

Specifications

SKU #	220309
Connector Type	Version 2
Rated Voltage	12V 
Rated Wattage	10W MAX
Lamp Holder	G5.3
IP Rating	IP65 & IP67*
Recessed Luminaire Classification	Do-Not-Cover luminaire
Weight	0.41kg
Cut out size	Dia:70mm
Dimensions	H:160mm Dia:89mm

* Ground recessed luminaires Standards

See the Installation Requirements on Page 1 for additional information.