

Installation Instructions
SKU# 220461 (LD-C622)
Rated Voltage 220-240V, 50Hz

PLEASE READ AND SAVE ALL INSTRUCTIONS CAREFULLY BEFORE USING THE PRODUCT

WARNING - to reduce the risk of fire, electrical shock or injury to persons or property, please follow the guideline below for safe use and installation.

INSTALLATION REQUIREMENTS:

- **Must be installed by a Licensed Electrician.**
- **Must be installed according to the current wiring rules AS/NZS3000.**
- **Do not exceed the maximum wattage rating**
- **The fitting is rated IP44, this must be maintained during installation.**
- **Take note of the installation direction label on the fitting.**

INSTALLATION DIRECTIONS:

- Take care not to pull any wires during unpacking as a bad connection may occur.
 - Level all the components on a smooth surface and make sure there is no component missing before assembly.
 - Check whether the fitting has been damaged during transport. Do not operate/install any product which appears damaged in any way. Return the complete product to the place of purchase for inspection, repair or replacement.
 - Ensure all power connection is off for your own safety.
1. Loosen and remove the mounting bracket from the back of fitting.
 2. Using the mounting bracket, mark holes onto the wall and drill holes.
Put the plastic anchors into the holes.
Secure the mounting bracket onto the wall with the screws provided.
Ensure the screws used are suitable for the mounting surface.
 3. Connect the mains supply wire to the light fitting using the terminal block provided.
Ensure that the wires are secure and no bare wires are exposed.

Mains Supply Wire

Earth – Yellow/Green

Neutral – Blue or Black

Live – Brown or Red

Fitting Wire

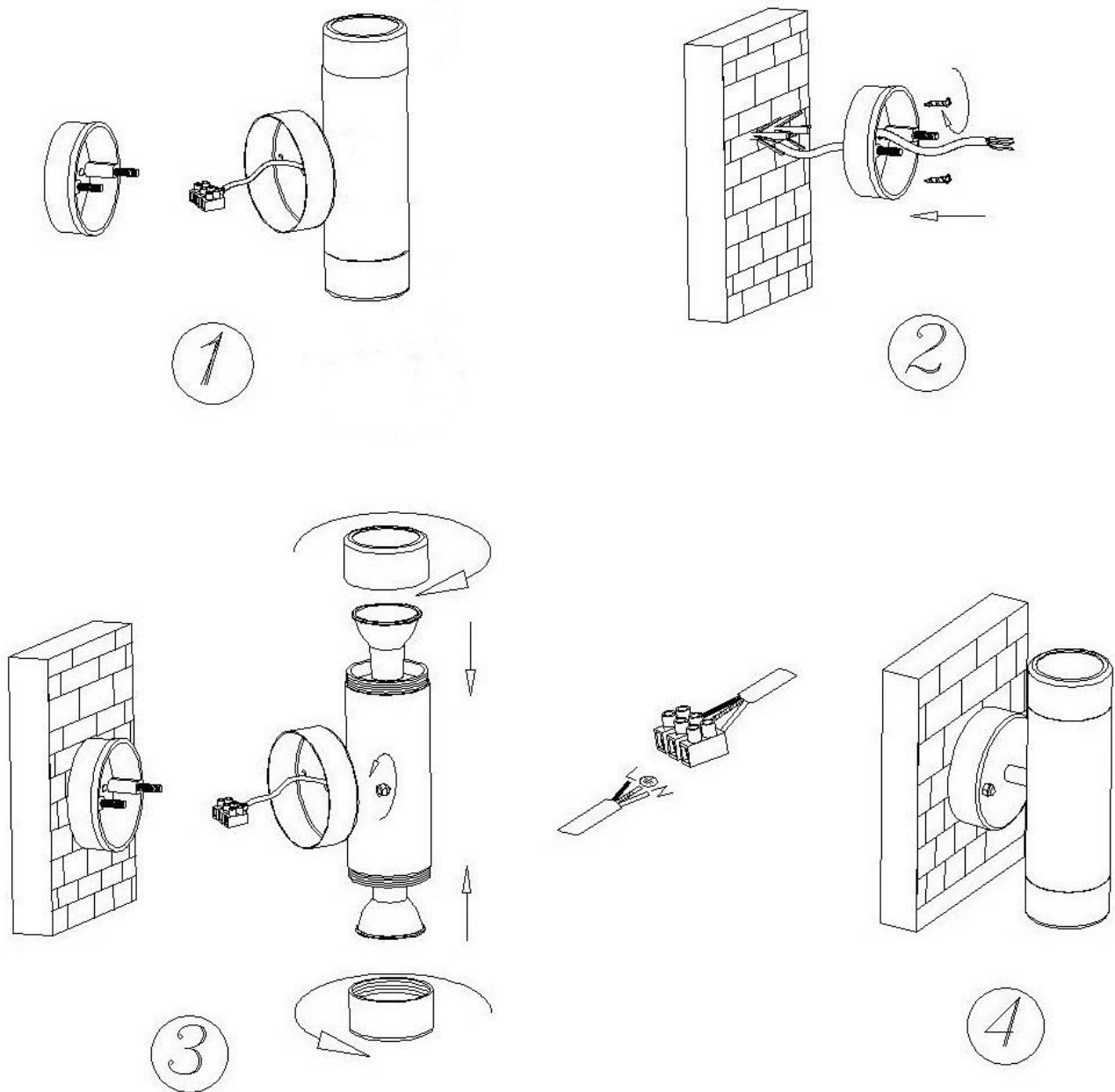
Yellow/Green 

Blue

Brown

Install the bulb (not included) into the lamp holder.

4. Turn on the power and enjoy your new light fitting.



TIPS:

1. To avoid injury or damage to the fitting, ensure that power leads and screws are secure before connecting the power.
2. Handle the fitting and cover/shade with care to avoid breakage.
3. Ensure that the fitting does not come in contact with corrosive chemicals, etc.
4. When changing or cleaning bulbs, turn OFF power and allow to cool. Do not touch bulbs with bare hands, use gloves or a tissue.
5. To clean, turn OFF the power and wipe with a damp clean cloth. Never soak the fitting with water.

SPECIFICATIONS:

SKU #	MODEL #	IP RATING	RATED VOLTAGE	LAMP HOLDER	RATED WATTAGE
220461	LD-C622	IP44	220-240V~ 50Hz	GU10	2x Max. 35W