

MARINE LED 12V GROUND LIGHT with VERSION 2 connector

SKU# 221053, 221056

Rated Voltage 12V

NOTE: This installation instruction applies to the 12V side of the luminaire only.
This luminaire is rated 12V and is classified as ELV (Extra Low Voltage).
This luminaire can be DIY and does not require any electrical connection or disconnection.
Do not plug this luminaire directly into 240V.
When working with 240V, a licensed electrician is required.
The assistance of a technical person with the correct tools may be required to complete the install.
The Lucci wiring kit (SKU# 220826, 220827) and Lucci transformer (SKU# 220818, 220819, 220829) are sold separately.

Thank you for purchasing this quality LUCCI product. To ensure correct function and safety, please read and follow all instructions carefully before assembly, installation and use of this luminaire. Please keep instructions for future reference.

Warranty

- This luminaire is covered by a 3 year warranty. The warranty is from date of purchase, not the date of installation.
- Please retain proof of purchase for any warranty enquiries.
- This luminaire is not suitable for use with dimmer switches.
- Warranty will be void if the luminaire is used on the same circuit which has a dimmer switch.
- Warranty will be void if there is any damage due to improper usage or modification to the luminaire.
- Failure to comply with the instructions in this manual may increase the risk of damage or injury and will void warranty.

Installation Requirements

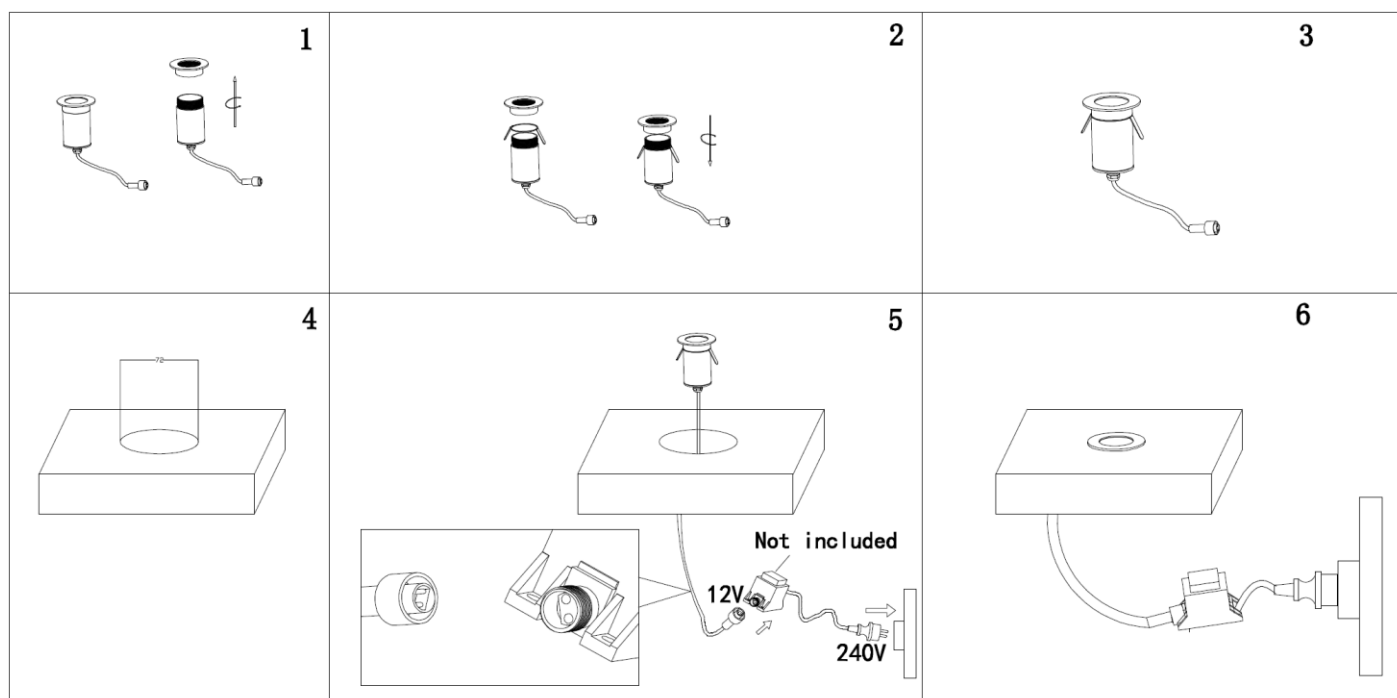
- All wiring and installation of the luminaire must adhere to the latest local and national wiring rules. eg. AS/NZS 3000 Electrical installations. If unsure, please contact a licensed electrician.
- The luminaire must not be used if the diffuser on the LED has been cracked or damaged.
- Select a suitable location for installation:
 - This luminaire is protected against water penetration to IP65 standards, which is against low pressure jets of water from all practicable direction. This must be maintained during installation.
 - The wiring kit and connectors are not suitable for underground installation without protection from water or damp conditions. Ensure they are positioned in a location where the water can be easily drained away. They are not designed to be immersed in water.
 - The installation location may require a gravel substrate to help with water drainage, to prevent the wiring kit and connectors being submerged in water after heavy rain or from watering the garden.
 - This luminaire is designed for in ground installation only. Not suitable for ceiling or step light installations.
 - The mounting point must support 2 times the weight of the luminaire.
- Take care not to pull any electrical wires during unpacking as this may damage the connection.
- Lay out all the components on a smooth surface and make sure there are no components missing before assembling. If parts are missing, return the complete product to the place of purchase for inspection or replacement.
- Check whether the luminaire has been damaged during transport. Do not operate/install any product which appears damaged in any way. Return the complete product to the place of purchase for inspection, repair or replacement.
- Ensure power to the circuit you are working on has been switched OFF before commencing any electrical work.

Installation Directions

Remove all packaging material from the product and be careful not to throw away accessories that may be hidden within the packaging material. If assembly is required, place the luminaire on a smooth non-scratch surface.

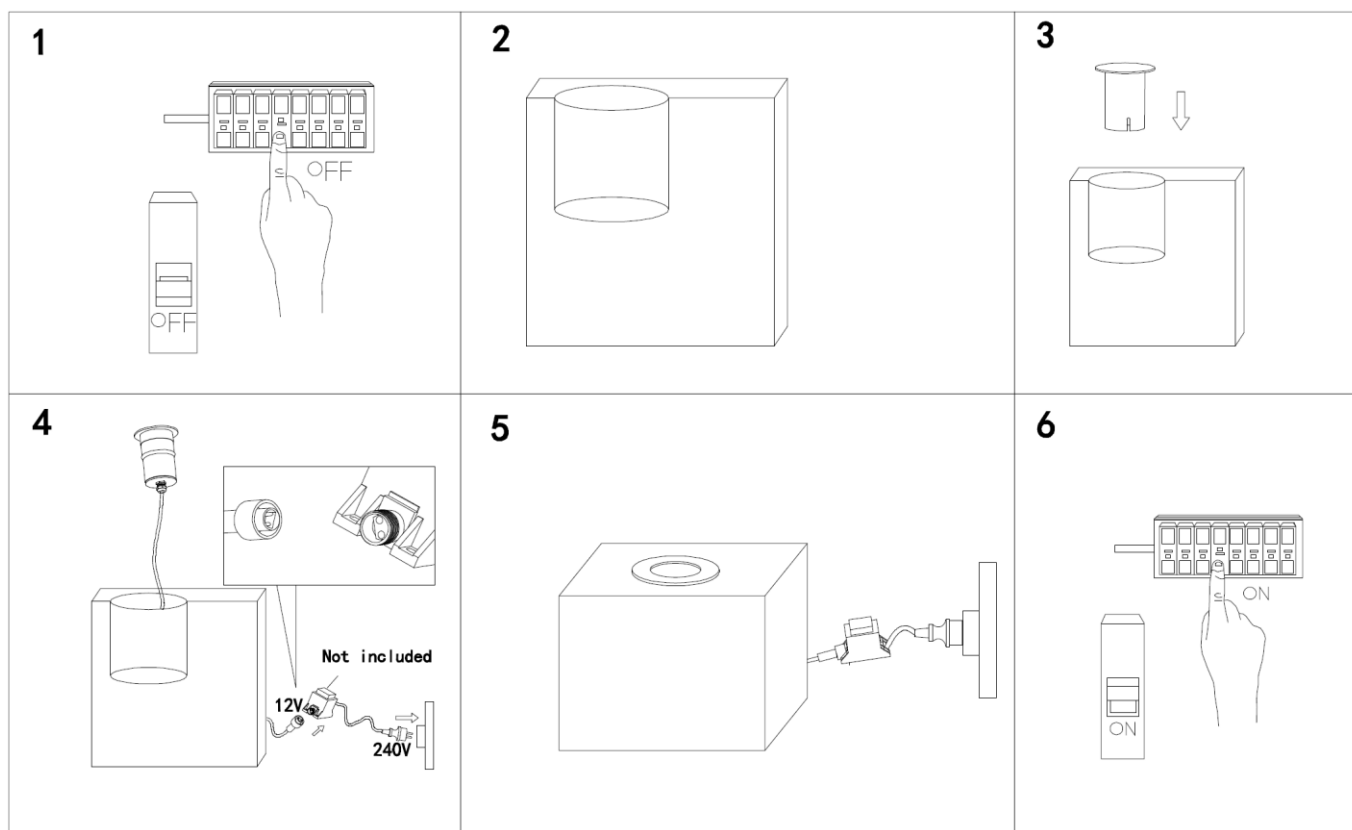
INSTALLING THE GROUND LIGHT WITH SPRINGS (refer to diagram below)

1. Ensure power to the circuit you are working on has been switched OFF, before commencing the installation.
2. Take the luminaire out from the moulded box.
3. Remove the lamp shade from luminaire by turning it anti-clockwise. (Fig. 1)
4. Install the spring onto the luminaire and re-install the lamp shade onto the luminaire. (Fig. 2 & 3)
5. Cut an installation hole of Ø72mm into the mounting point. (Fig. 4)
6. Connect the luminaire to the Lucci wiring kit (SKU# 220826, 220827 - sold separately). Ensure the connector is fully tightened. (Fig. 5) **NOTE: The wiring kit is rated for Max. 80VA load only.**
7. Connect the Lucci wiring kit (SKU# 220826, 220827 – sold separately) to the Lucci transformer (SKU# 220818, 220818, 220829 – sold separately). (Fig. 5) **NOTE: Do not exceed the load of the Lucci wiring kit and Lucci transformer which are rated 80VA, 28VA and 10VA load respectively.**
8. Press the springs and install the luminaire into the installation hole. (Fig. 5 & 6)
9. Insert the transformer plug (not included) into mains power socket outlet (not included) and ensure it is fully plugged in. Switch on the luminaire to test all the lighting functions and enjoy your new luminaire. (Fig. 5 & 6).



INSTALLING THE GROUND LIGHT WITH MOULDED BOX (refer to diagram below)

1. Ensure power to the circuit you are working on has been switched OFF, before commencing the installation. (Fig.1)
2. Take the luminaire out from the moulded box.
3. Cut an installation hole of Ø84mm into the mounting point. (Fig.2)
4. Insert the moulded box into the mounting point. Fig. 3
5. Connect the luminaire to the Lucci wiring kit (SKU# 220826, 220827 - sold separately). Ensure the connector is fully tightened. (Fig. 4) **NOTE: The wiring kit is rated for Max. 80VA load only**
6. Connect the Lucci wiring kit (SKU# 220826, 220827 – sold separately) to the Lucci transformer (SKU# 220818, 220818, 220829 – sold separately). (Fig. 4) **NOTE: Do not exceed the load of the Lucci wiring kit and Lucci transformer which are rated 80VA, 28VA and 10VA load respectively.**
7. Install the luminaire into the moulded box. (Fig. 5)
8. Insert the transformer plug (not included) into mains power socket outlet (not included) and ensure it is fully plugged in. Switch on the luminaire to test all the lighting functions and enjoy your new luminaire. (Fig. 5 & 6)



Safety Tips

- Always ensure the power is OFF and the luminaire has cooled down before performing any maintenance, cleaning or making any adjustment to the luminaire.
- The external flexible cable or cord of this luminaire cannot be replaced; if the cable or cord is damaged, the luminaire shall be destroyed.
- The luminaire must not be used if the protective shield has been cracked. Replace any cracked protective shield before using the luminaire.
- The light source of this luminaire is not replaceable; when the light source reaches its end of life the whole luminaire shall be replaced. There are no serviceable parts, do not attempt to dismantle or open the product.
- To avoid injury or damage to the luminaire, ensure that power leads and screws are secure before connecting the power.
- To clean, wipe with a damp clean cloth. Do NOT soak or immerse the luminaire in water or other liquids.
- Ensure that the luminaire does not come in contact with corrosive chemicals/solvents or abrasive cleaners etc.

Specifications

SKU #	221053	221056
Color	Black	316 Marine Grade Stainless Steel
Connector Type	Version 2	
Rated Voltage	12V	
Rated Wattage	8W	
LED	300 lumens, 3200K, Non-dimmable	
IP Rating	IP65	
Weight	0.5kg	
Cut Out Size	When using springs : Dia: 72mm When using moulded box: Dia:84mm	
Dimensions	H:132mm Dia:88mm	H:132mm Dia:90mm