

MALVERN 12V LED BOLLARD with VERSION 2 connector

SKU# 221065

Rated Voltage 12V

Thank you for purchasing this quality LUCCI product. To ensure correct function and safety, please read and follow all instructions carefully before assembly, installation and use of this luminaire. Please keep instructions for future reference.

NOTE: This installation instruction applies to the 12V side of the luminaire only.

This luminaire is 12V extra-low voltage and can be DIY.

Do not plug this luminaire directly into 240V.

When working with 240V, a licensed electrician is required.

The Lucci wiring kit (SKU# 220826, 220827), Lucci transformer (SKU# 220818, 220819, 220829) are sold separately.

Warranty

- This luminaire is covered by a 3 year warranty. The warranty is from date of purchase, not the date of installation.
- Please retain proof of purchase for any warranty enquiries.
- Warranty will be void if there is any damage due to improper usage or modification to the luminaire.
- Failure to comply with the instructions in this manual may increase the risk of damage or injury and will void warranty.

Installation Requirements

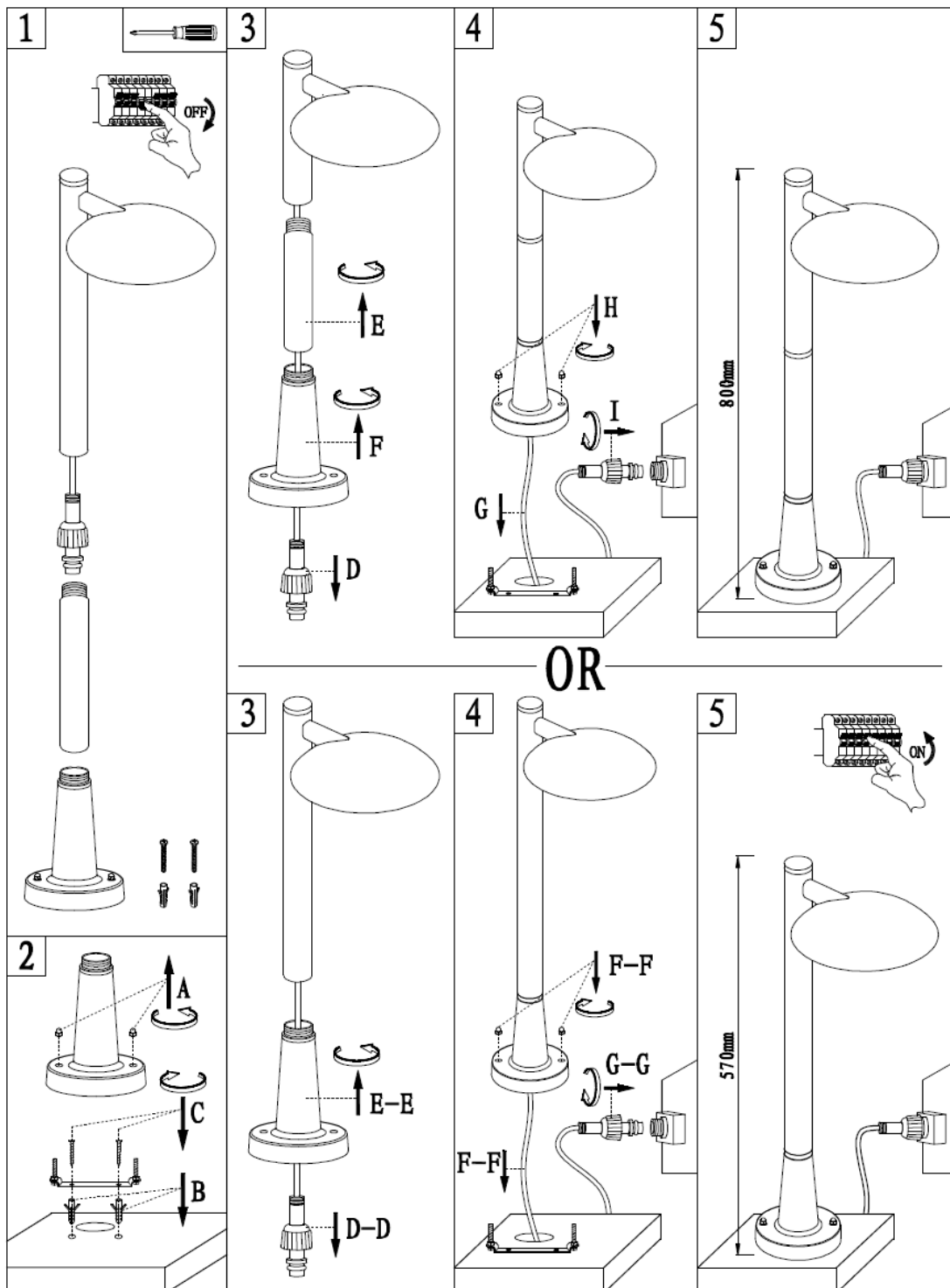
- All wiring and installation of the luminaire must adhere to the latest local and national wiring rules. eg. AS/NZS 3000 Electrical installations. If unsure, please contact a licensed electrician.
- Do not exceed the maximum wattage rating.
- This luminaire is rated IP65. This must be maintained during installation.
- Replace any cracked protective lamp shade to maintain IP rating when using this luminaire.
- Select a suitable location for installation:
 - This luminaire is protected against water penetration to IP65 standards, which is against low pressure jets of water from all practicable direction. This must be maintained during installation.
 - The wiring kit and connectors are not suitable for underground installation without protection from water or damp conditions. It is not designed to be immersed in water.
 - The installation location may require a gravel substrate to help with water drainage, to prevent the wiring kit and connectors being submerged in water after heavy rain or from watering the garden.
- Take care not to pull any electrical wires during unpacking as this may damage the connection.
- Lay out all the components on a smooth surface and make sure there are no components missing before assembling. If parts are missing, return the complete product to the place of purchase for inspection or replacement.
- Check whether the luminaire has been damaged during transport. Do not operate/install any product which appears damaged in any way. Return the complete product to the place of purchase for inspection, repair or replacement.
- Ensure power to the circuit you are working on has been switched OFF before commencing any electrical work.

Installation Directions

1. Remove all packaging material from the product and be careful not to throw away accessories that may be hidden within the packaging material. If assembly is required, place the luminaire on a smooth non-scratch surface.
2. Turn OFF the power to Lucci transformer (sold separately). Fig.1
3. Remove the mounting bracket from the luminaire by loosening the screws. Fig. 2
4. Use the mounting bracket as a template to mark the screw positions on installation area. Fig.2
5. Install the mounting brackets onto the installation area by using appropriately sized mounting screws and anchors. Ensure the screws and anchors used are suitable for the mounting surface and the surrounding environment. Fig. 2

Installation Instructions

6. Install the LED head onto the lamp base with or without the extension rod. Fig.3
7. Install the luminaire onto the mounting bracket by tightening the screws. Fig. 4
8. Remove the cover from the connector on the Lucci wiring kit (SKU# 220826, 220827 – sold separately). Connect the fitting to the wiring kit. **NOTE: The wiring kit is rated for Max.120VA load only.** Fig. 4
9. Connect the Lucci wiring kit (SKU# 220826, 220827 – sold separately) to the Lucci transformer (SKU# 220818, 220819, 220829 – sold separately). **NOTE: The transformers are rated for 80VA, 28VA and 10VA load respectively.** Fig. 4
10. Ensure that the wires are secure and no bare wires are exposed. Ensure all wiring and the transformer used are appropriately rated and suitable for the location. If unsure please contact a licensed electrician.
11. Turn ON the power to the luminaire.



Safety Tips

- Always ensure the power is OFF and the luminaire has cooled down before performing any maintenance, cleaning, changing the globe or making any adjustment to the luminaire.
- The external flexible cable or cord of this luminaire cannot be replaced; if the cable or cord is damaged, the luminaire shall be destroyed.
- To avoid injury or damage to the luminaire, ensure that power leads and screws are secure before connecting the power.
- The luminaire must not be used if the protective shield has been cracked. Replace any cracked protective shield before using the luminaire.
- Ensure that the luminaire does not come in contact with corrosive chemicals/solvents or abrasive cleaners etc.
- To clean, wipe with a damp clean cloth. Do NOT soak or immerse the luminaire in water or other liquids.
- The light source contained in this luminaire shall only be replaced by the manufacturer or his service agent or a similar qualified person.

Specifications

SKU #	221065
Connector Type	Version 2
Colour	Black
Rated Voltage	220-240V~ 50Hz
Rated Wattage	12W
LED Specs	3000K, 700 Lumens
Weight	1.2kg
Dimensions	H:800mm L:290mm W:200mm Max
IP Rating	IP65