

GECKO 24V Control box

SKU# 221080

Rated Voltage 24V DC

Thank you for purchasing this quality LUCCI product. To ensure correct function and safety, please read and follow all instructions carefully before assembly, installation and use of this device. Please keep instructions for future reference.

NOTE: This control box is 24V extra-low voltage and can be DIY.

Do not plug this control box directly into 240V.

When working with 240V, a licensed electrician is required.

The GECKO wiring kit (SKU# 221082, 221083, 221084, 221085), GECKO transformer (SKU# 221070, 221071, 221072), GECKO Series Luminaires sold separately.

Warranty

- This device is covered by a 3 year warranty. The warranty is from date of purchase, not the date of installation.
- Please retain proof of purchase for any warranty enquiries.
- Warranty will be void if there is any damage due to improper usage or modification to the device.
- Failure to comply with the instructions in this manual may increase the risk of damage or injury and will void warranty.

Installation Requirements

- All wiring and installation of the device must adhere to the latest local and national wiring rules. eg. AS/NZS 3000 Electrical installations. If unsure, please contact a licensed electrician.
- This device is only used with the compatible Lucci products.
- This device is rated IP65. This must be maintained during installation.
- Select a suitable location for installation:
 - This device is protected against water penetration to IP65 standards, which is against low pressure jets of water from all practicable directions. This must be maintained during installation.
 - The installation location may require a gravel substrate to help with water drainage, to prevent the wiring kit and connectors being submerged in water after heavy rain or from watering the garden.
- Take care not to pull any electrical wires during unpacking as this may damage the connection.
- Lay out all the components on a smooth surface and make sure there are no components missing before assembling. If parts are missing, return the complete product to the place of purchase for inspection or replacement.
- Check whether the device has been damaged during transport. Do not operate/install any product which appears damaged in any way. Return the complete product to the place of purchase for inspection, repair or replacement.
- Ensure power to the circuit you are working on has been switched OFF before commencing any electrical work.
- This device can be abutted to the structural or building element.
- Do not cover with thermal insulation.

Installation Directions

Remove all packaging material from the product and be careful not to throw away accessories that may be hidden within the packaging material. If assembly is required, place the device on a smooth non-scratch surface.

1. Identify a suitable location for installation. Refer to the installation requirement.
2. Remove the cover from the connector on the wiring kit (SKU# 221082, 221083, 221084, 221085 – sold separately).

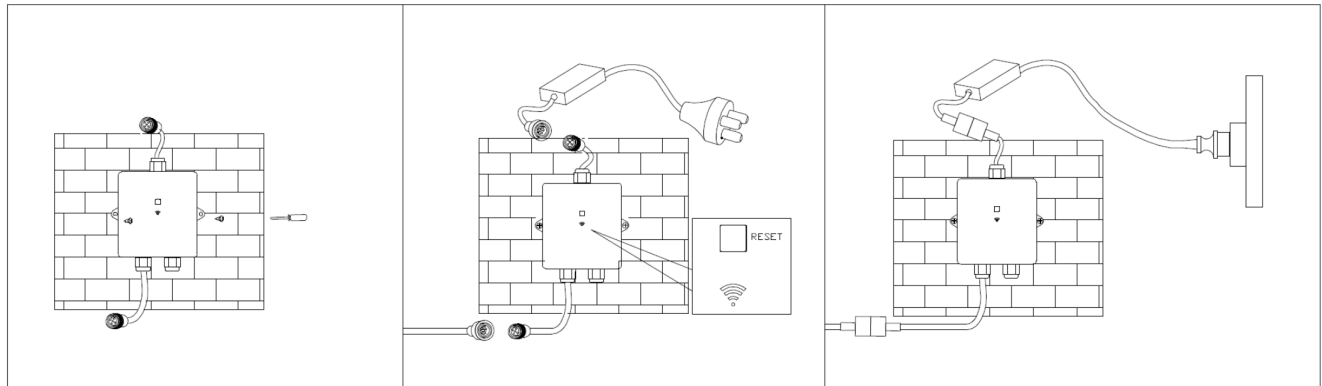
Connect the luminaires to the wiring kit. **NOTE: The wiring kit is rated for a Max. 150W load only.**

Connect the wiring kit (SKU# 221082, 221083, 221084, 221085 – sold separately) to the GECKO control box.

Connect the GECKO control box to the transformer (SKU# 221070, 221071, 221072 – sold separately).

NOTE: The transformers are rated for 40W, 75W and 150W load respectively. (Fig.3, 4)

NOTE: The total power of the luminaires must be not over the maximum rated power of the GECKO wiring kit, control box, and the transformers.



Safety Tips

- Always ensure the power is OFF and the device has cooled down before performing any maintenance, cleaning, or making any adjustment to the device.
- The external flexible cable or cord of this device cannot be replaced; if the cable or cord is damaged, the device shall be destroyed.
- To avoid injury or damage to the device, ensure that power leads and screws are secure before connecting the power.
- Ensure that the device does not come in contact with corrosive chemicals/solvents or abrasive cleaners etc.
- To clean, wipe with a damp clean cloth. Do NOT soak or immerse the device in water or other liquids.

Specifications

SKU #	221080
Color	Black
Rated Voltage	Input: 24V DC Output: 24V DC
Max.Load	150W
IP Rating	IP65
Weight	0.4kg
Dimensions	H: 31mm L: 135mm W: 125mm Max.