

SUNSET SOLAR 4 LIGHT SPIKE KIT

SKU#221126

Rated Voltage 5 VDC

To ensure correct function and safety, please read and follow all instructions carefully before assembly, installation and use of the product. Please keep instructions for future reference.

Warranty

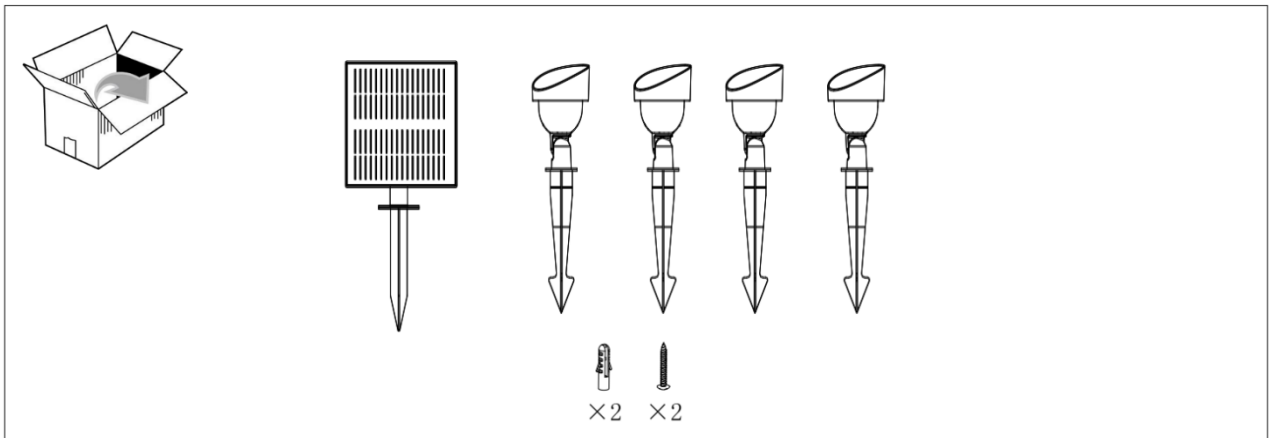
- This luminaire is covered by a 5-year warranty. The warranty is from date of purchase, not the date of installation.
- Please retain proof of purchase for any warranty enquiries.
- The warranty is for the luminaire only and does not include the rechargeable battery.
- Warranty will be void if there is any damage due to improper usage or modification to the fitting.
- Failure to comply with the instructions in this manual may increase the risk of damage or injury and will void warranty.

Installation requirements

- All wiring and installation of the luminaire must adhere to the latest local and national wiring rules. eg. AS/NZS 3000 Electrical installations. If unsure, please contact a licensed electrician.
- Select a suitable location for installation:
 - This luminaire is suitable for outdoor use only.
 - The mounting point must support 2 times the weight of the luminaire.
 - This luminaire is protected against water penetration to IP54 standards, which is splashing in every direction and is not designed to be immersed in water.
 - The luminaire is not suitable for underground installation without protection from water or damp conditions. Ensure they are positioned in a location where the water can be easily drained away. They are not designed to be immersed in water.
 - The installation location may require a gravel substrate to help with water drainage, to prevent the luminaire being submerged in water after heavy rain or from watering the garden.
 - The solar panel must have access to direct sunlight to recharge the battery. Avoid any areas where there is possible shading on top of the solar panel.
- The luminaire must not be used if the protective shield or shade has been cracked or damaged. Replace the protective shield or shade before using the luminaire.
- Take care not to pull any electrical wires during unpacking as this may damage the connection.
- Type Z: the external flexible cable or cord of this luminaire cannot be replaced; if the cord is damaged, the luminaire shall be destroyed.
- Lay out all the components on a smooth surface and make sure there are no components missing before assembling. If parts are missing, return the complete product to the place of purchase for inspection or replacement.
- Check whether the fitting has been damaged during transport. Do not operate/install any product which appears damaged in any way. Return the complete product to the place of purchase for inspection, repair or replacement.

Installation directions

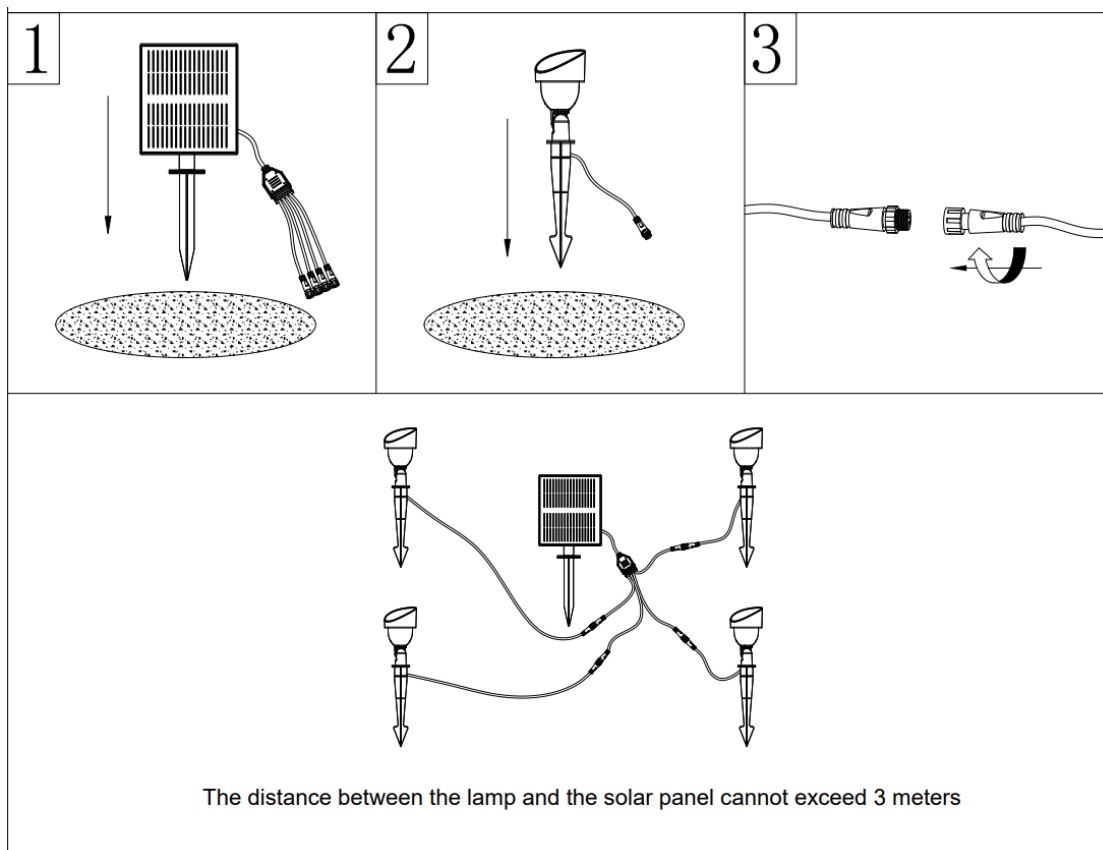
Remove all packaging material from the product and be careful not to throw away accessories that may be hidden within the packaging materials.



This luminaire can be installed as a **SPIKE MOUNT** or **SCREW MOUNT**.

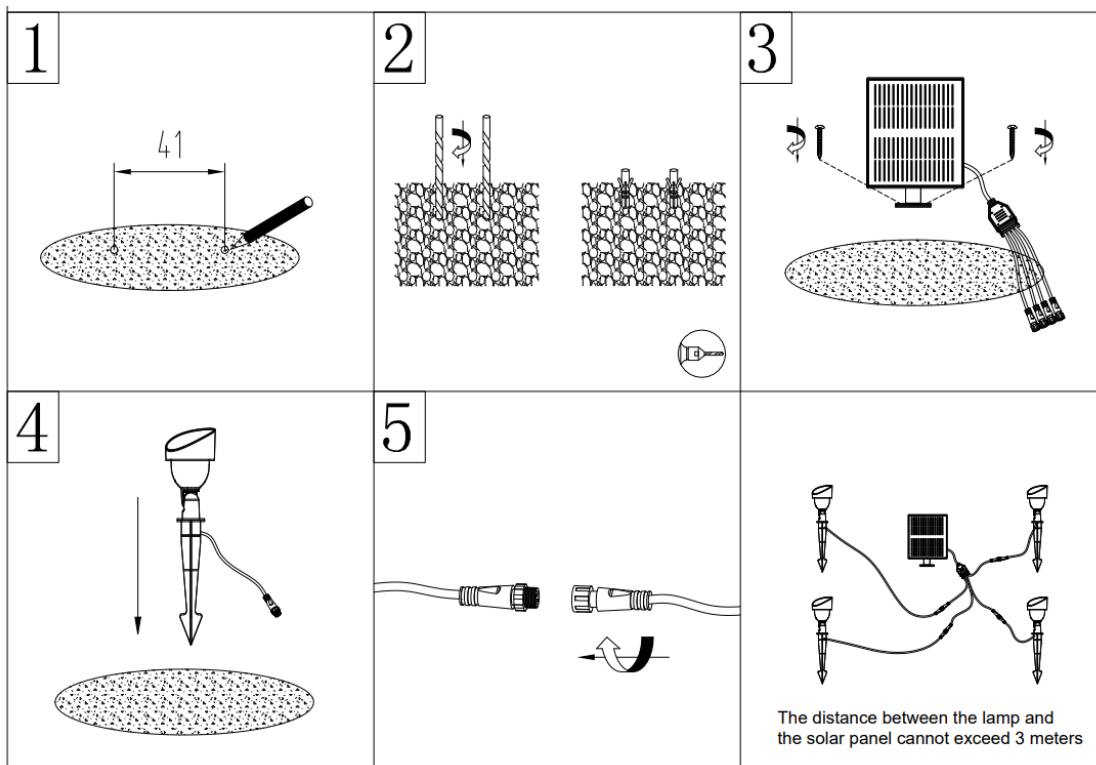
SPIKE MOUNT (Refer to the diagram below)

- Insert the spike of solar panel into the ground. Fig.1
- Insert the spikes of the four lamps into the ground. Fig.2
- Use the quick connectors of lamps to connect the quick connectors of solar panel. Ensure the connectors is fully tightened. Fig.3
- **NOTE: The distance between the lamp and the solar panel cannot exceed 3 meters.**



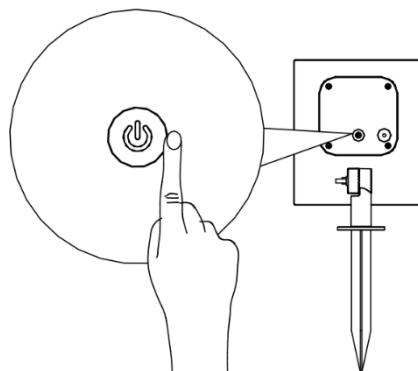
SCREW MOUNT (Refer to the diagram below)

- Mark the screw hole positions on the ground. Fig.1
- Drill the screw holes on the ground and install the anchors into the screw holes. Fig.2
- Remove the spike from the solar panel, install the solar panel on the ground by locking the solar panel base with mounting screws. Fig.3
- Insert the spikes of the four lamps into the ground. Fig.4
- Use the quick connectors of lamps to connect the quick connectors of solar panel. Ensure the connectors is fully tightened. Fig.5
- **NOTE: The distance between the lamp and the solar panel cannot exceed 3 meters.**



Function:

After the installation, short press the power button on the back of solar panel one time to turn on the power, solar panel can charge battery for 9 hours during daytime. when the ambient light is reduced to around 20 lux, the lamps will light on automatically and turn off automatically when the ambient light is above 20 lux. After charge battery fully, the lamps can be light on for 10 hours. If you want to turn off the lamps, long press the power button 3 seconds.



Battery Replacement

This luminaire has a built-in rechargeable lithium battery. (Li-ion HB18650 2P, 3.7VDC, 4400mAh)

Battery full Charging time: 9 hours under strongest direct sunlight or 100W halogen bulbs at 100mm direct lighting distance

Full battery: light up time > 10 hours when fully charged.

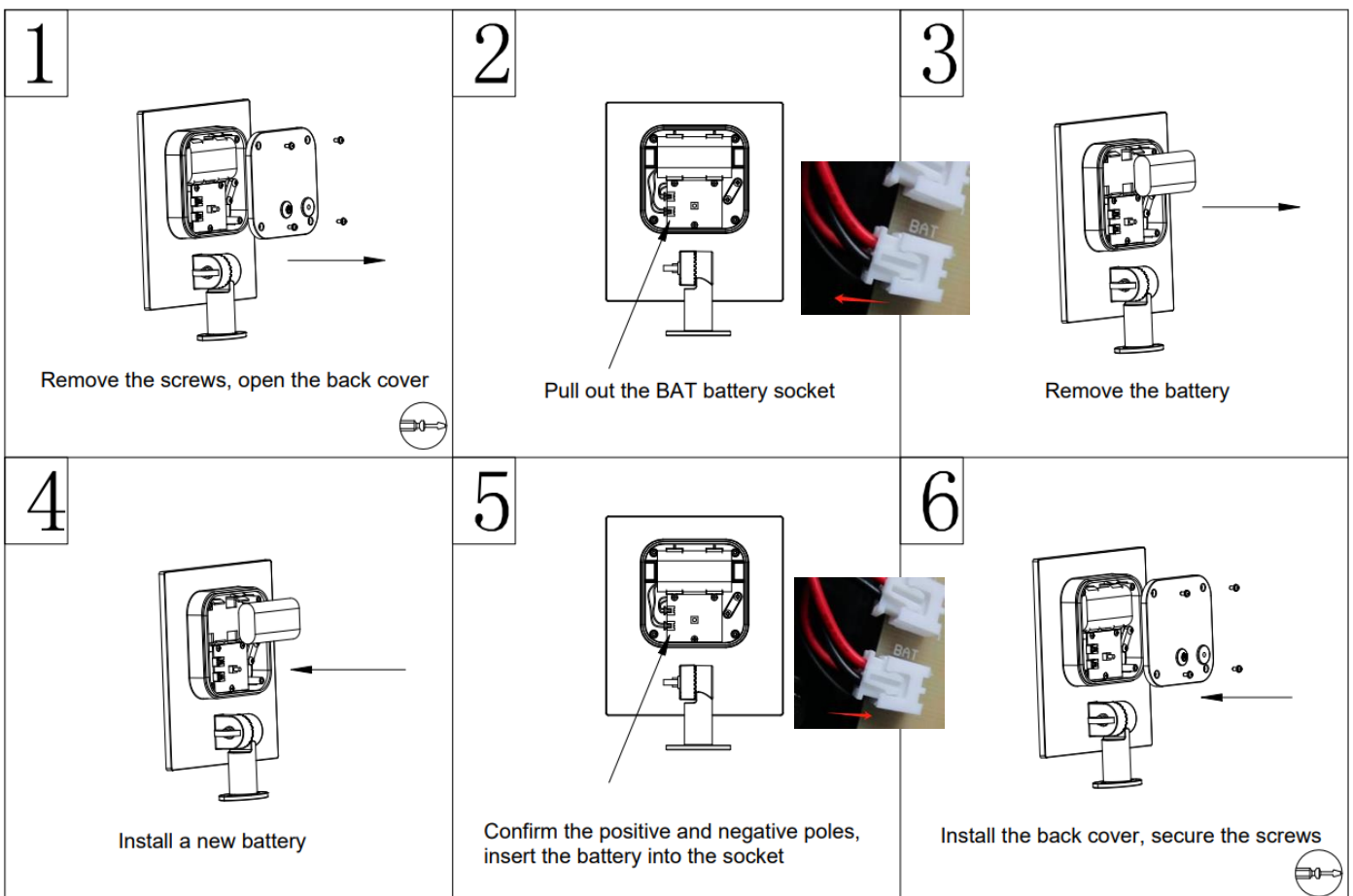
The battery has a limited life (1.5 – 2 years). After this time, the battery can be replaced following these steps:

NOTE: During the battery replacement, do not scratch or damage the surface of the solar panel, as this will reduce its efficiency to recharge the battery.

1. Turn the luminaire upside down and place on a smooth, flat non-scratch surface.
2. Remove the screws, open the back cover from the back of solar panel. (Fig. 1)
3. Locate the wires from the battery to the luminaire and pull the connector from the luminaire marked **BAT**. (Fig. 2)
4. Remove the old battery and replace with the new battery. (Fig. 3 & Fig.4)
5. Install the battery connector to the luminaire marked **BAT**. (Fig. 5)

NOTE: Dispose of exhausted batteries immediately and safely (so they cannot be retrieved by children). Contact your local council to dispose of the battery safely.

6. Install the back cover back onto the back of solar panel, secure the screws. (Fig. 6)



Safety tips

- Always ensure the power is OFF and the luminaire has cooled down before performing any maintenance, cleaning, making any adjustment to the luminaire.
- Young children should be supervised to ensure that they do not play with the luminaire.
- Handle the luminaire with care to avoid any damage or breakage.
- To clean, wipe with a soft damp cloth. Do NOT soak or immerse the luminaire in water or other liquids.
- Ensure that the luminaire does not come in contact with corrosive chemicals/solvents or abrasive cleaners etc.
- The luminaire must not be used if the protective shield or shade has been cracked or damaged. Replace the protective shield or shade before using the luminaire.
- The light source of this luminaire is not replaceable; when the light source reaches its end of life, the whole luminaire shall be replaced. There are no serviceable parts, do not attempt to dismantle or open the luminaire.
- Dispose of exhausted batteries immediately and safely (so they cannot be retrieved by children). Contact your local council to dispose of the battery safely.
- Do not install the fitting in a position where sunlight cannot reach the solar panel.
- Type Z: the external flexible cable or cord of this luminaire cannot be replaced; if the cord is damaged, the luminaire shall be destroyed.

Specifications

| | |
|---------------|---|
| SKU # | 221126 |
| Rated Voltage | 5V DC |
| Rated Wattage | 6W |
| LED Specs | 480 lumens, 6W, Warm White – 3000K, CRI > 80 |
| Battery Specs | Li-ion HB18650 2P, 3.7VDC 4400mAh Rechargeable Li-ion battery (included) Battery life (1.5 – 2 years) Replaceable battery* |
| IP Rating | IP54 |
| Light up time | >10 hours when fully charged (and there has been sufficient sunlight) |
| Weight | 2kg |
| Dimensions | W145mm H360mm E145mm MAX (the max size able to be adjusted for every lamp at any direction) D82mm H360mm (the max size in upright way) W180mm H388mm E180mm MAX (the max size able to be adjusted for solar module at any direction) W160mm H388mm E38mm MAX (the max size in upright way) |

*Refer to the instruction manual for more details