

Installation Instructions
SKU# 230306, 230307 (LD-215-3/304, LD-215-3/316)
Rated Voltage 220-240V~ 50Hz

THANK YOU FOR PURCHASING THIS QUALITY LUCCI PRODUCT, TO ENSURE CORRECT FUNCTION AND SAFETY, PLEASE READ AND SAVE ALL INSTRUCTIONS CAREFULLY BEFORE USING THE PRODUCT.

WARRANTY:

- This light fitting is covered by a 12 month warranty; please retain proof of purchase and evidence of installation by a licensed electrician.
- Warranty will be void if there is any damage due to improper usage or modification to the fitting.

INSTALLATION REQUIREMENTS:

- **Must be installed by a Licensed Electrician.**
- **All wiring must adhere to Local and National wiring codes. eg. AS/NZS 3000 latest edition.**
- **This fitting is a Class I product and must be earthed.**
- **This fitting is rated IP44, this must be maintained during installation.**
- **Do not exceed the maximum wattage rating.**
- **The mounting point must be able to support 2 times the weight of the fitting.**
- **A clearance of 0.5m should be kept between the globe and nearest object/wall/ceiling.**

INSTALLATION DIRECTIONS:

- Take care not to pull any electrical wires during unpacking as this may damage the connection.
 - Lay out all the components on a smooth surface and make sure there is no component's missing before assembling.
 - Check whether the fitting has been damaged during transport. Do not operate/install any product which appears damaged in any way. Return the complete product to the place of purchase for inspection, repair or replacement.
 - Ensure all power to the circuit you are working on has been switched OFF.
1. Select a suitable location for installation. This fitting is protected against water penetration to IP44 standards, which is splashing in every direction. Take note of the clearance required and the directional label on the fitting before installation.
 2. Use the fitting as a template and mark the screw positions onto the wall. Drill holes into the wall and put the plastic anchors into the holes.
 3. Connect the earth and mains supply wire to the terminal block in the fitting. Ensure that the wires are secure and no bare wires are exposed.

Mains Supply Wire

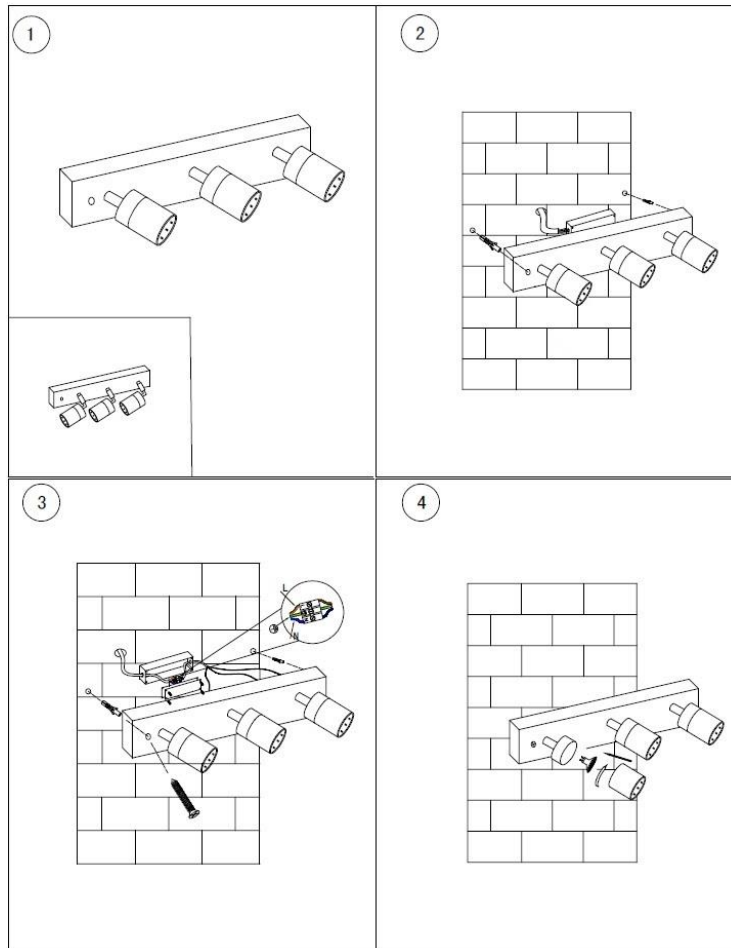
Earth – Yellow/Green
Neutral – Blue or Black
Live – Brown or Red

Fitting Wire

Yellow/Green ⊕
Blue
Brown

Install the fitting onto the wall with the screws provided. Ensure the screws used are suitable for the mounting surface. The mounting point must be able to support 2 times the weight of the fitting.

4. Install the globes (not included) into the lamp holders. Do not exceed the maximum wattage rating.
5. Turn the fitting on and enjoy your new lighting product.



TIPS:

1. Always ensure the power is OFF and the fitting has cooled down before performing any maintenance or adjustment to the fitting.
2. Always ensure the power is OFF and the fitting has cooled down before changing or cleaning the globe. Do not touch the globe with bare hands, use a clean cloth, gloves or a tissue.
3. To avoid injury or damage to the fitting, ensure that power leads and screws are secure before connecting the power.
4. Handle the fitting and cover/shade with care to avoid breakage.
5. Ensure that the fitting does not come in contact with corrosive chemicals, etc.
6. To clean, wipe with a damp clean cloth. Never soak the fitting with water.

SPECIFICATIONS:

SKU #	230306	230307
MODEL #	LD-215-3/304	LD-215-3/316
RATED VOLTAGE	220-240V~ 50Hz	
RATED WATTAGE	Use 3 x MAX. 35W	
LAMP HOLDER	GU10	
WEIGHT	1.78 kg	
DIMENSIONS	600mm x 97mm x 145mm (W x E x H)	
IP RATING	IP44	

