

SENTINEL SQUARE UP/DOWN WALL BRACKET

SKU# 230356

Rated Voltage 220-240V~ 50Hz

Thank you for purchasing this quality Lucci product. To ensure correct function and safety, please read and follow all instructions carefully before assembly, installation and use of this product. Please keep instructions for future reference.

Warranty

- This light fitting is covered by a 12 month warranty. The warranty is from date of purchase, not the date of installation.
- If the fitting is not assembled and installed by a licensed electrician the warranty will be void.
- Please retain proof of purchase and evidence of installation by a licensed electrician for any warranty claims.
- Warranty will be void if there is any damage due to improper usage or modification to the fitting.
- Failure to comply with the instructions in this manual may increase the risk of damage or injury and will void warranty.


Installation Requirements

- This fitting must be assembled and installed by a licensed electrician.
- All wiring and installation of the light fitting must adhere to local and national wiring rules.
eg. AS/NZS 3000:2007/Amendment 2:2012 Electrical installations.
- This fitting is a Class I product and must be earthed.
- This fitting is rated IP23, this must be maintained during installation.
- Do not exceed the maximum wattage rating.
- Select a suitable location for installation:
 - The mounting point must be able to support 2 times the weight of the fitting.
 - A clearance of 0.5m must be kept between the globe and the nearest wall or object etc.
 - This fitting is protected against water penetration to IP23 standards, which is spraying water at an angle of up to 60°.
- Take care not to pull any electrical wires during unpacking as this may damage the connection.
- Lay out all the components on a smooth surface and make sure there are no components missing before assembling. If parts are missing, return the complete product to the place of purchase for inspection or replacement.
- Check whether the fitting has been damaged during transport. Do not operate/install any product which appears damaged in any way. Return the complete product to the place of purchase for inspection, repair or replacement.
- Ensure power to the circuit you are working on has been switched OFF before commencing any electrical work.

Installation Directions

1. Remove all packaging material from the product and be careful not to throw away accessories that may be hidden within the packaging material.
2. Remove the mounting bracket from the fitting by loosening the screws on the side of the fitting. (Fig. 1)
3. Use the mounting bracket as a template to mark the screw positions on the wall. (Fig. 2)
4. Install the mounting bracket on the wall by using appropriately sized mounting screws and anchors.
Ensure the mounting screws and anchors used are suitable for the mounting surface and the surrounding environment. (Fig. 3)
5. Remove the cover from the terminal box and connect the mains supply wire to the terminal block. (Fig. 4)
Ensure the wires are secure and no bare wires are exposed.


Mains Supply Wire

Earth – Yellow/Green 

Neutral – Blue or Black

Live – Brown or Red

Fitting Wire

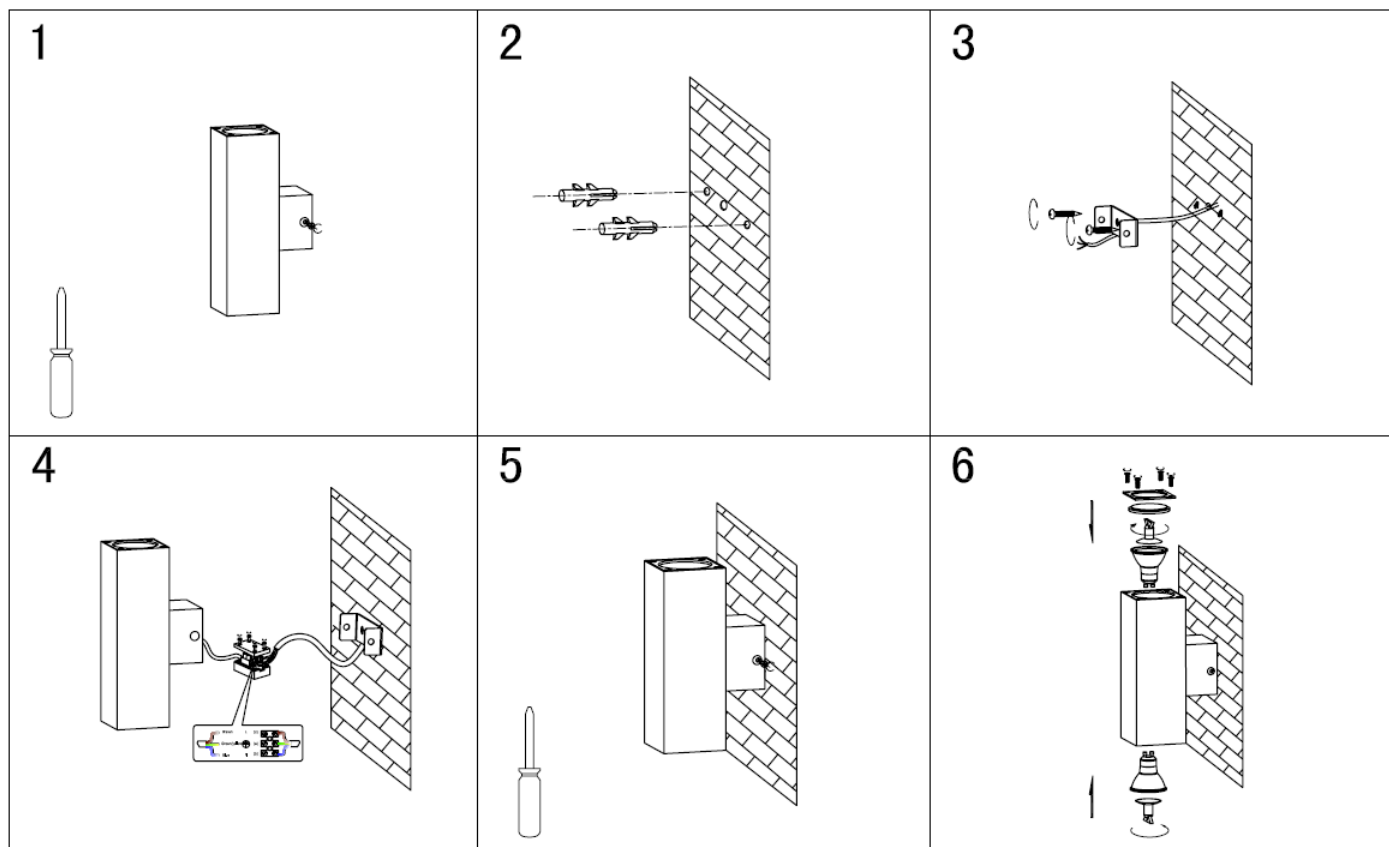
Yellow/Green or 

Blue or N

Brown or L

6. Install the cover back over the terminal box and place the terminal box into the cavity of the fitting.
7. **NOTE: It is recommended that a non-corrosive bead of silicone be applied before installation onto the wall ensuring that no water can run down into the cabling.**

8. Install the fitting onto mounting bracket and tighten the screws on the side of the fitting. (Fig. 5)
Take note of the directional label.
9. Remove the lamp covers from the lamp body by loosening the screws. (Fig. 6)
10. Install a globe (not included) into each lamp holder. Do not exceed the maximum wattage rating. (Fig. 6)
11. Install the lamp covers back onto the lamp body and secure by tightening the screws. (Fig. 6)
12. Check that all parts are secured tightly. Switch on the fitting to test and enjoy your new lighting product.



Safety Tips

- Always ensure the power is OFF and the fitting has cooled down before performing any maintenance, cleaning, changing the globe or making any adjustment to the fitting.
- To avoid injury or damage to the fitting, ensure that power leads and screws are secure before connecting the power.
- The fitting must not be used if the shade has been cracked. Replace any cracked protective shield.
- Ensure that the fitting does not come in contact with corrosive chemicals/solvents or abrasive cleaners etc.
- To clean, wipe with a soft damp cloth. Do NOT soak or immerse the product in water or other liquids.

Specifications

SKU #	230356
Rated Voltage	220-240V~ 50Hz
Rated Wattage	70W Max. (2x Max 35W globe)
Lamp Holder	GU10
IP Rating	IP23
Weight	0.7kg
Dimensions	H:200mm W:60mm E:98mm