

**Installation Instructions**  
**SKU# 230396 (LD-ST5008-GU10)**  
**Rated Voltage 220-240V~ 50Hz**

**THANK YOU FOR PURCHASING THIS QUALITY LUCCI PRODUCT. TO ENSURE CORRECT FUNCTION AND SAFETY, PLEASE READ AND SAVE ALL INSTRUCTIONS CAREFULLY BEFORE USING THE PRODUCT.**

**WARRANTY:**

- This light fitting is covered by a 12 month warranty; please retain proof of purchase and evidence of installation by a licensed electrician.
- Warranty will be void if there is any damage due to improper usage or modification to the fitting.

**INSTALLATION REQUIREMENTS:**

- **Must be installed by a licensed electrician.**
- **All wiring and installation of the light fitting must adhere to local and national wiring codes. eg. AS/NZS 3000 latest edition.**
- **This fitting is rated IP66, this must be maintained during installation.**
- **Select a suitable location for installation;**
  - **The mounting point must support 2 times the weight of the fitting.**
  - **A clearance of 0.5m should be kept between the globe and nearest object/wall etc.**
- **Do not exceed the maximum wattage rating**
- **Take care not to pull any electrical wires during unpacking as this may damage the connection.**
- **Lay out all the components on a smooth surface and make sure there are no components missing before assembling.**
- **Check whether the fitting has been damaged during transport.**  
**Do not operate/install any product which appears damaged in any way.**  
**Return the complete product to the place of purchase for inspection, repair or replacement.**
- **Ensure all power to the circuit you are working on has been switched OFF.**

**INSTALLATION DIRECTIONS:**

1. Remove the mounting bracket from the fitting by loosening the screws with the Allen key provided.
2. Use the mounting bracket as a template to mark the screw positions onto the wall.
3. Drill holes into the wall and push the plastic screw anchors into the holes.  
Ensure the plastic screw anchors used are suitable for the mounting surface.
4. Install the mounting bracket onto the wall by using appropriately sized mounting screws.  
Ensure the mounting screws used are suitable for the mounting surface.
5. Connect the mains supply wire to the terminal block.  
Ensure that the wires are secure and no bare wires are exposed.

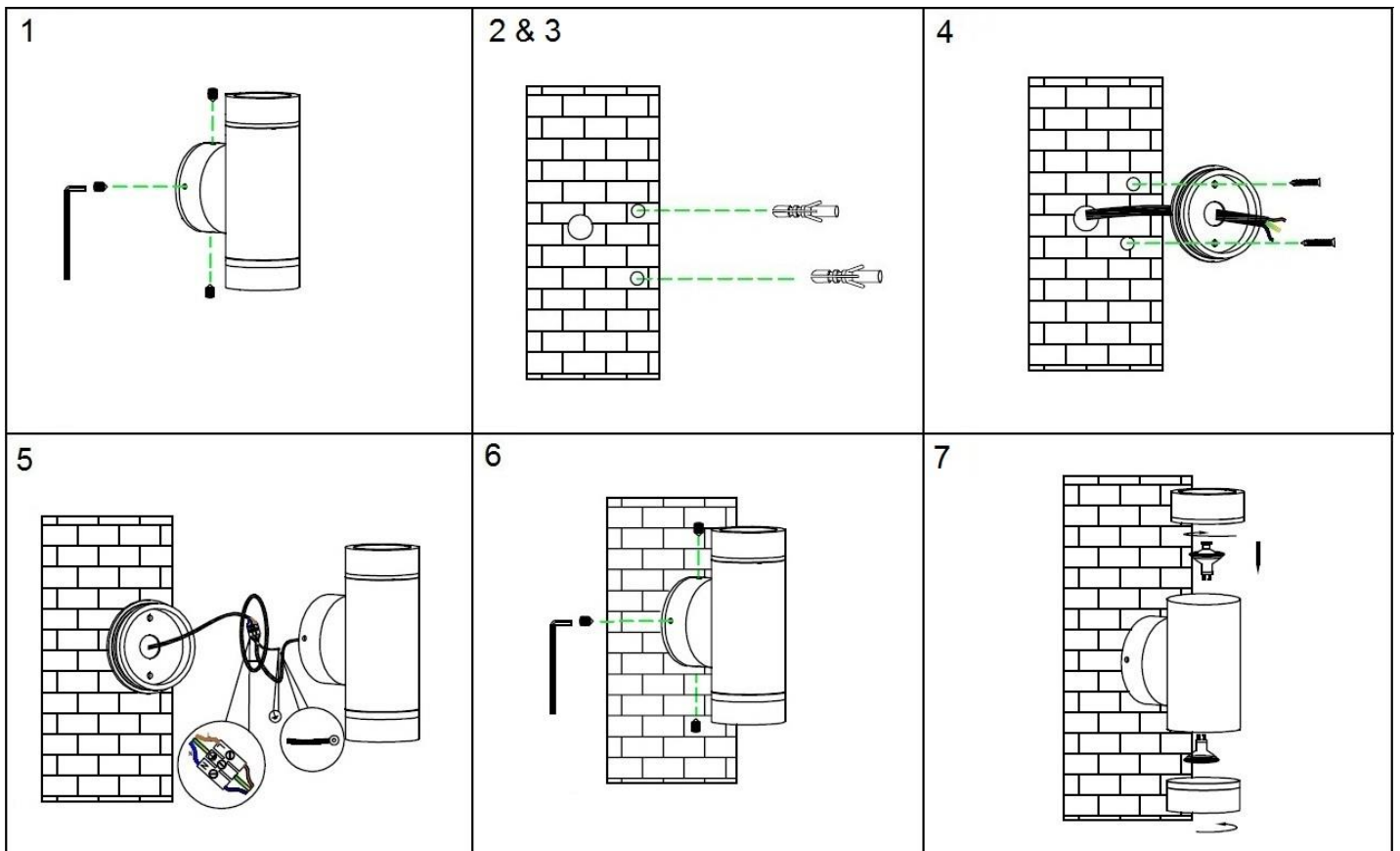
**Mains Supply Wire**

Earth – Yellow/Green  
Neutral – Blue or Black  
Live – Brown or Red

**Fitting Wire**

Yellow/Green ⊕  
Blue  
Brown

6. Install the fitting back onto the mounting bracket and **tighten** the screws with the Allen key provided.
7. Install globes (not included) into the fitting. Do not exceed the maximum wattage rating.



**SAFETY TIPS:**

1. Always ensure the power is OFF and the fitting has cooled down before performing any maintenance or adjustment to the fitting.
2. Always ensure the power is OFF and the fitting has cooled down before cleaning or changing the globe. Do not touch the globe with bare hands. Use a clean cloth, gloves or a tissue.
3. To avoid injury or damage to the fitting, ensure that power leads and screws are secure before connecting the power.
4. Ensure that the fitting does not come in contact with corrosive chemicals, etc.
5. To clean, wipe with a damp clean cloth. Never soak the fitting with water.

**SPECIFICATIONS:**

<b>SKU #</b>	230396
<b>MODEL #</b>	LD-ST5008-GU10
<b>RATED VOLTAGE</b>	220-240V~ 50Hz
<b>RATED WATTAGE</b>	70W - Use 2 x MAX. 35W
<b>LAMP HOLDER</b>	GU10
<b>IP RATING</b>	IP66
<b>WEIGHT</b>	1.39kg
<b>DIMENSIONS</b>	206 x 75 x 95mm (H x W x E)