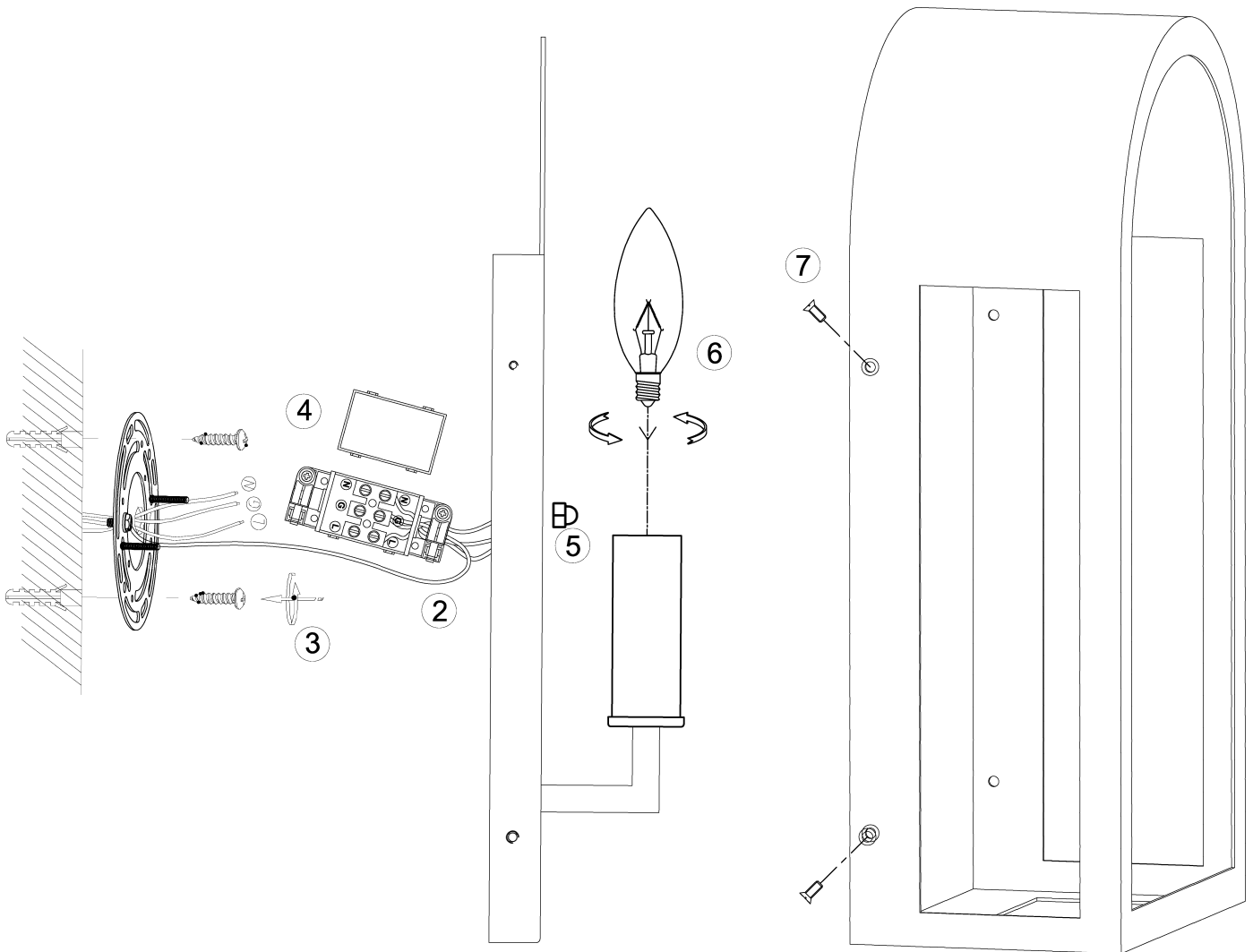


# POSITANO ASSEMBLY SHEET



Please ensure power to the circuit you are working on has been switched OFF before commencing any electrical work.

This fitting is for WALL MOUNT ONLY and the directional label must be adhered to.

1. Remove the backplate from the luminaire by undoing the 4 Phillips Head screws that attach it to the front of the luminaire.
2. Connect the earth wire (Yellow/Green wire) from the circular mounting plate to the terminal block on the primary side.
3. Attach the circular mounting plate to the wall using the screws and anchors supplied. Please ensure that the screws supplied are suitable for the mounting surface.
4. Connect the mains power supply wires to the terminal block. Please ensure that the black weatherproof sleeves are in place on each end of the terminal block and all wires are connected through these sleeves as they are part of the weatherproofing.
5. Push the backplate over the circular mounting plate and attach the 2 knobs to the threaded screws coming off the circular mounting plate. Make sure the directional arrow is facing up as with this fitting the SES lampholders must be facing upwards and the drainage holes are facing downwards.  
**To maintain IP44 integrity it is the responsibility of the electrician to seal the backplate to the affixed surface with a suitable silicon sealant.**
6. Screw the appropriate globes (not supplied by Cougar Lighting) into the SES lampholders. Do not exceed the maximum wattage rating.
7. Place the front face of the luminaire onto the backplate. Tighten the 4 Phillips Head screws through the front face into the backplate.

**This light fixture must be installed by a licensed electrician.  
In accordance to Australian wiring rules AS/NZS 3000.**