

SENTINEL 3 LIGHTS BAR

SKU# 239388,239396

Rated Voltage 220-240V~ 50Hz

Thank you for purchasing this quality Lucci product. To ensure correct function and safety, please read and follow all instructions carefully before assembly, installation and use of this product. Please keep instructions for future reference.

Warranty

- This luminaire is covered by a 12 month warranty. The warranty is from date of purchase, not the date of installation.
- If the luminaire is not assembled and installed by a licensed electrician the warranty will be void.
- Please retain proof of purchase and evidence of installation by a licensed electrician.
- Warranty will be void if there is any damage due to improper usage or modification to the luminaire.
- Failure to comply with the instructions in this manual may increase the risk of damage or injury and will void warranty.

Installation requirements

- Must be assembled and installed by a licensed electrician.
- All wiring and installation of the luminaire must adhere to the latest local and national wiring rules. eg. AS/NZS 3000 Electrical installations.
- Do not exceed the maximum wattage rating.
- Select a suitable location for installation:
 - This luminaire is protected against water penetration to IP65 standards, which is against low pressure jets of water from all practicable direction. This must be maintained during installation.
 - It is suitable for indoor or outdoor use.
 - The mounting point must support 2 times the weight of the luminaire.
- Take care not to pull any electrical wires during unpacking as this may damage the connection.
- Lay out all the components on a smooth surface and make sure there are no components missing before assembling. If parts are missing, return the complete product to the place of purchase for inspection or replacement.
- Check whether the luminaire has been damaged during transport. Do not operate/install any product which appears damaged in any way. Return the complete product to the place of purchase for inspection, repair or replacement.

Installation directions

1. Remove all packaging material from the product and be careful not to throw away accessories that may be hidden within the packaging material.
2. Switch off the power before commencing the installation. (Fig.1)
3. Remove the lamp covers & the lamp retaining ring. (Fig.2)
4. Install the globes (not included) into the lamp holders. **Do not exceed the maximum wattage rating.** Then install the lamp retaining ring & lamp covers back onto the luminaire. (Fig.3)
5. Remove the mounting bracket by loosening the screws from the side. (Fig.4)
6. Install the mounting bracket on the wall by using appropriately sized mounting screws and anchors. Ensure the screws and anchors used are suitable for mounting surface and the surrounding environment. (Fig.5, 6)

NOTE: Make sure the luminaire is installed according to the directional label on the back of the luminaire. The drain holes must face downward.

NOTE: It is recommended that a non-corrosive bead of silicone be applied before installation onto the wall ensuring that no water can run down into the cabling.

7. Connect the mains supply wire to the luminaire using the terminal block provided. Ensure that the wires are secure and no bare wires are exposed. (Fig.7)

Installation Instructions

Mains Supply Wire

Earth – Yellow/Green

Live – Brown or Red

Neutral – Blue or Black

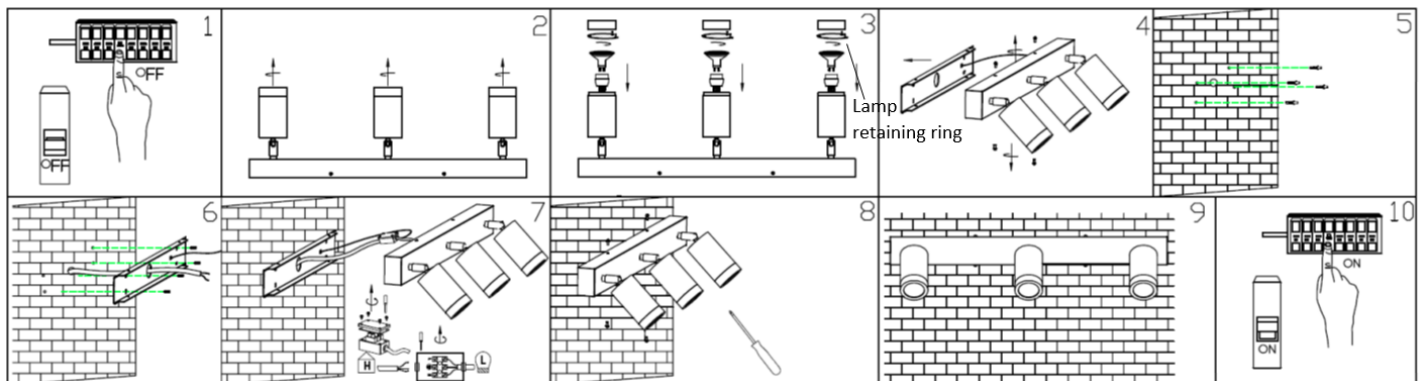
Terminal block

Yellow/Green or 

Live (L)

Neutral (N)

8. Install the luminaire back onto the mounting bracket by tightening the screws on the both sides with the provided allen key (Fig.8)
9. Make any final adjustments to the luminaire and check that all parts are secured tightly before turning the power on. (Fig.9 & 10)



Safety tips

- Always ensure the power is OFF and the luminaire has cooled down before performing any maintenance, cleaning, changing the globe or making any adjustment to the luminaire.
- To avoid injury or damage to the luminaire, ensure that power leads and screws are secure before connecting the power.
- The luminaire must not be used if the shade has been cracked. Replace any cracked protective shield.
- Ensure that the luminaire does not come in contact with corrosive chemicals/solvents or abrasive cleaners etc.
- To clean, wipe with a damp clean cloth. Do NOT soak or immerse the product in water or other liquids.

Specifications

SKU #	239388	239396
Colour	Black	White
Rated Voltage	220-240V~ 50Hz	
Rated Wattage	30W Max. (Use Max. 3 x 10W globes, LED Only)	
Lamp Holder	GU10	
IP Rating	IP65	
Weight	1.7kg	
Dimensions	H:210mm W:270mm L:770mm	