

REMIUS LED RECTANGLE TALL BUNKER

SKU# 239406, 239407, 239408

Rated Voltage 220-240V~ 50Hz

Thank you for purchasing this quality Lucci product. To ensure correct function and safety, please read and follow all instructions carefully before using the product, installation and use of this product. Please keep instructions for future reference.

Warranty

- This light fitting is covered by a 3 year warranty. The warranty is from date of purchase, not the date of installation.
- Please retain proof of purchase and evidence of installation by a licensed electrician for any warranty enquiries
- If the fitting is not installed by a licensed electrician it will void the warranty.
- Warranty will be void if there is any damage due to improper usage or modification to the fitting.
- This light fitting is not suitable for use with dimmer switches. Warranty will be void if the fitting is used on the same circuit which has a dimmer switch.
- Failure to comply with the instructions in this manual may increase the risk of damage or injury and will void warranty.

Installation requirements

- Must be assembled and installed by a licensed electrician.
- All wiring and installation of the light fitting must adhere to local and national wiring rules. eg. AS/NZS 3000:2007/Amendment 2:2012 Electrical installations.
- This is a CLASS I fitting and must be earthed during installation.
- This fitting is not suitable for use with dimmer switches and should not be used with a circuit which has a dimmer.
- This fitting is rated IP65, this must be maintained during wiring and installation.
- Select a suitable location for installation:

This fitting is rated IP65 which is protected against jets of water.

The mounting point must support 2 times the weight of the fitting.

- Take care not to pull any electrical wires during unpacking as this may damage the connection.
- Lay out all the components on a smooth surface and make sure there are no components missing before assembling.
- Check whether the fitting has been damaged during transport. Do not install any product which appears damaged in any way. Return the complete product to the place of purchase for inspection, repair or replacement.
- Ensure power to the circuit you are working on has been switched OFF, before commencing any electrical work.

Installation directions


Remove all packaging material from the product and be careful not to throw away accessories that may be hidden within the packaging material. If assembly is required, place the fitting on a smooth non-scratch surface.

1. Remove the shade from the fitting by loosening the screws. (Fig. B)
2. Use the fitting as a template to mark the screw positions onto the wall. Drill holes into the wall and push the plastic anchors into the holes.
3. Install the fitting onto the wall by using the mounting screws with rubber ring provided. Check and ensure the anchors and mounting screws used are suitable for the mounting surface and the surrounding environment. (Fig. C)
4. Remove the terminal block cover by loosening the screw. Connect the mains supply wire to the terminal block. (Fig. D)

Mains Supply Wire

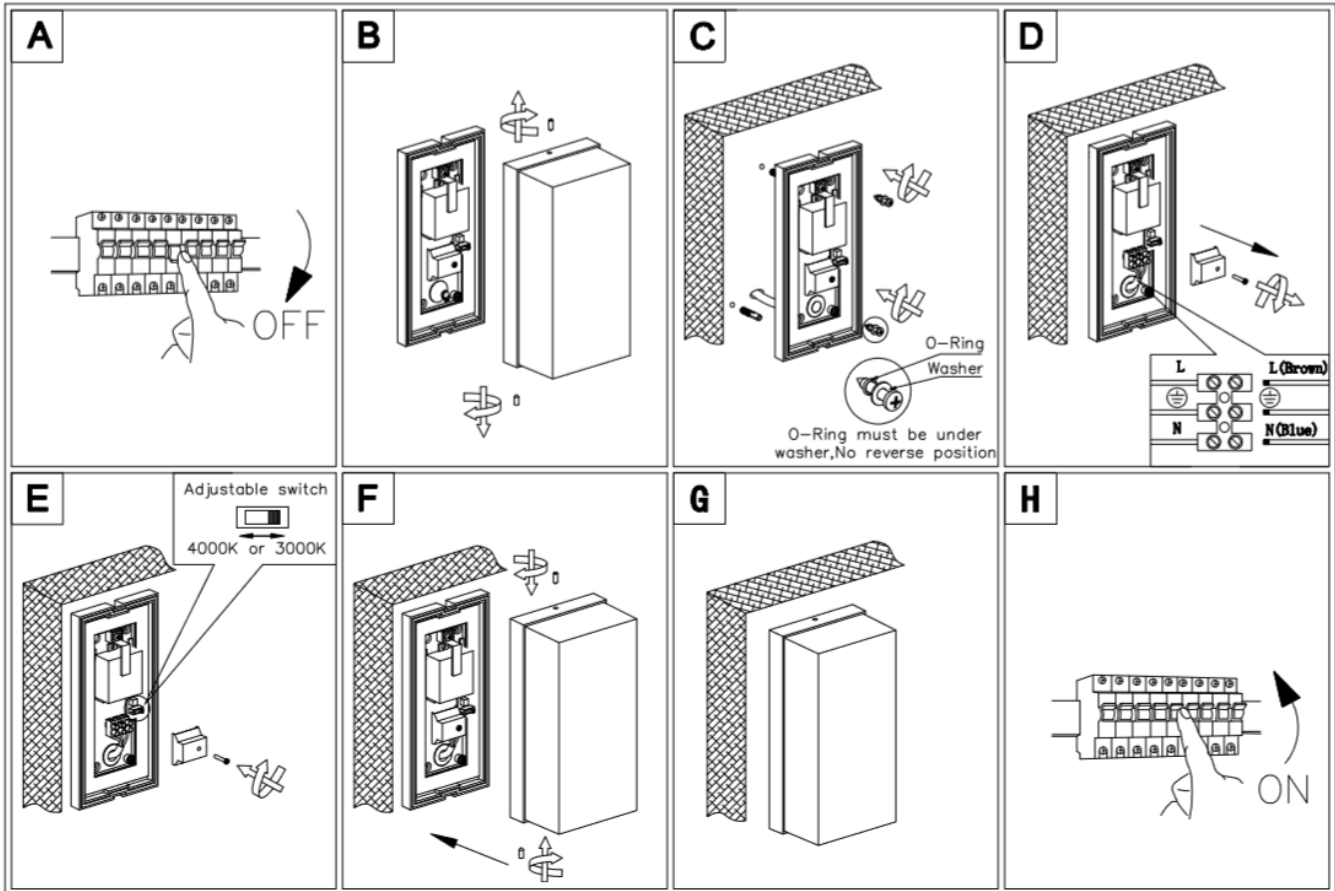
Earth – Yellow/Green
Neutral – Blue or Black
Live – Brown or Red

Fitting Wire

Yellow/Green 
Blue
Brown

5. Ensure that the wires are secure and no bare wires are exposed. Install the cover back onto the terminal block and secure with the screw. (Fig. E)

6. Select the colour temperature by sliding the adjustable switch. (Fig. E)
7. Install the shade back onto the fitting and secure by tightening the screws. (Fig. F)
8. After the installation, switch on the fitting to test and enjoy your new lighting product.



Safety tips

- Always ensure the power is OFF and the fitting has cooled down before performing any maintenance, cleaning or adjustment to the fitting.
- The fitting must not be used if the protective shield has been cracked or damaged. Replace any cracked protective shield.
- To avoid injury or damage to the fitting, ensure that power leads and screws are secure before connecting the power.
- Select a suitable location away from hazards.
- Ensure that the fitting does not come in contact with corrosive chemicals/solvents or abrasive cleaners etc.
- To clean, wipe with a soft damp cloth. Do NOT soak or immerse the product in water or other liquids.

Specifications

SKU #	239406	239407	239408
Colour	Silver	Black	White
Rated Voltage	220-240V~ 50Hz		
Rated Wattage	11W		
LEDs	SUNPU, 650LM, 3000K or 4000K		
IP Rating	IP65		
Weight	0.56kg		
Dimensions	H:200mm W:100mm E:70mm		