

ENDEAVOUR LED OVAL BUNKER

SKU# 239435


Rated Voltage 220-240V~ 50Hz

To ensure correct function and safety, please read and follow all instructions carefully before assembly, installation and use of this luminaire. Please keep instructions for future reference.

Warranty

- This luminaire is covered by a 5 year warranty. The warranty is from date of purchase, not the date of installation.
- If the luminaire is not installed by a licensed electrician it will void the warranty.
- Please retain proof of purchase and evidence of installation by a licensed electrician for any warranty enquiries.
- Warranty will be void if there is any damage due to improper usage or modification to the luminaire.
- This luminaire is not suitable for use with dimmer switches. Warranty will be void if the luminaire is used on the same circuit which has a dimmer switch.
- Failure to comply with the instructions in this manual may increase the risk of damage or injury and will void warranty.

Installation Requirements

- Must be assembled and installed by a licensed electrician.
- All wiring and installation of the light fitting must adhere to local and national wiring rules.
eg. AS/NZS 3000:2007/Amendment 2:2012 Electrical installations.
- This luminaire is rated IP54, this must be maintained during wiring and installation.
- Select a suitable location for installation:
 - This luminaire is protected against water penetration to IP54 standards, which is splashing in every direction.
 - The mounting point must support 2 times the weight of the luminaire.
- CAUTION: risk of electric shock . The light source of this luminaire is not replaceable; when the light source reaches its end of life the whole luminaire will require replacement.
- Take care not to pull any electrical wires during unpacking as this may damage the connection.
- Lay out all the components on a smooth surface and make sure there are no components missing before assembling. If parts are missing, return the complete product to the place of purchase for inspection or replacement.
- Check whether the luminaire has been damaged during transport. Do not operate/install any luminaire which appears damaged in any way. Return the complete product to the place of purchase for inspection, repair or replacement.
- Ensure power to the circuit you are working on has been switched OFF, before commencing any electrical work.

Installation Directions

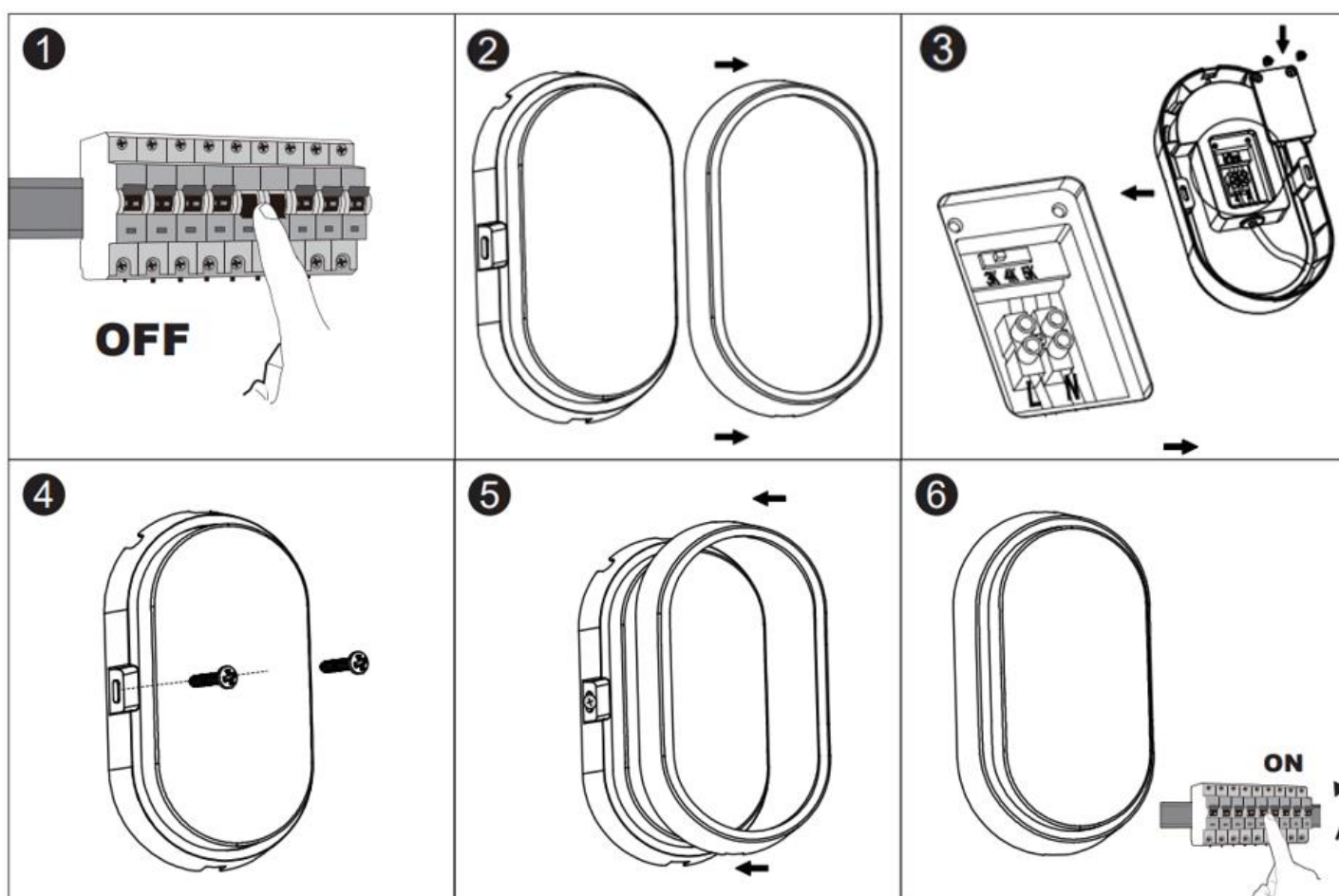
Remove all packaging material from the product and be careful not to throw away accessories that may be hidden within the packaging material. If assembly is required, place the luminaire on a smooth non-scratch surface.

1. Pull the decorative ring out from the luminaire. And remove the diffuser by loosening the screws.Fig.2
2. Remove the terminal block cover from the lamp base by loosening the screws.Fig.3
3. Insert the power cords through the hole on the lamp base. Connect the main supply wire to the terminal block. Ensure wires are secure and no bare wires are exposed. Fig.3

Mains Supply Wire	Luminaire Wire
Neutral – Blue or Black	Blue or N
Live – Brown or Red	Brown or L

4. Use the switch in the luminaire to select the colour temperature – 3000K or 4000K or 5000K. Fig.3

5. Install the terminal block cover back to the lamp base and secure it by tightening the screws. Fig.3
6. Use the lamp base as a template to mark the screw position on the installation area. Fig. 4
7. Install the lamp base onto the installation area using appropriate size mounting screws and anchors. Ensure the screws are suitable for the mounting surface and surrounding environment. Fig. 4
8. Reinstall the diffuser back to lamp base. Push and press the decorative ring onto the luminaire. Fig.5.
9. After the installation, switch on the fitting to test and enjoy your new lighting product.



Safety tips

- Always ensure the power is OFF and the fitting has cooled down before performing any maintenance, cleaning or making any adjustment to the luminaire.
- To avoid injury or damage to the luminaire, ensure that power leads and screws are secure before connecting the power.
- Select a suitable location away from hazards.
- The luminaire must not be used if the shade has been cracked. Replace any cracked protective shield.
- To clean, wipe with a soft damp cloth. Do NOT soak or immerse the product in water or other liquids.
- Ensure that the luminaire does not come in contact with corrosive chemicals/solvents or abrasive cleaners etc.

Specifications

SKU #	239435		
Colour #	Black		
Rated Voltage	220-240V~ 50Hz		
Rated Wattage	10W		
LED	NON-Dimmable, Colour switching 3000K/4000K / 5000K, 900 lumens Max.		
Weight	0.25kg		
IP Rating	IP54		
Dimensions	H:210mm	W:120mm	E:60mm