

## LUCCI CONNECT FLOOD LIGHT WITH CAMERA

SKU# 240915

Rated Voltage 220-240V~ 50Hz

Thank you for purchasing this quality Lucci product. To ensure correct function and safety, please read and follow all instructions carefully before assembly, installation and use of this product. Please keep instructions for future reference.

### Warranty

- This luminaire is covered by a 3-year warranty. The warranty is from date of purchase, not the date of installation.
- If the luminaire is not assembled and installed by a licensed electrician, the warranty will be void.
- Please retain the proof of purchase and evidence of installation by a licensed electrician.
- Warranty will be void if there is any damage due to improper usage or modification to the luminaire.
- Failure to comply with the instructions in this manual may increase the risk of damage or injury and will void the warranty.

### Installation requirements

- Must be assembled and installed by a licensed electrician.
- All wiring and installation of the luminaire must adhere to the latest local and national wiring rules.  
Eg. AS/NZS 3000 Electrical installations.
- This luminaire is not suitable for use with dimmer switches and should not be used on a circuit which has a dimmer.
- Select a suitable location for installation:
  - This luminaire is protected against water penetration to IP44 standards, which is splashing from every direction. This must be maintained during installation.
  - It is suitable for indoor or outdoor use.
  - The mounting point must support 2 times the weight of the luminaire.
- Take care not to pull any electrical wires during unpacking as this may damage the connection.
- Lay out all the components on a smooth surface and make sure no components are missing before assembling. If parts are missing, return the complete product to the place of purchase for inspection or replacement.
- Check whether the luminaire has been damaged during transport. Do not operate/install any product which appears damaged in any way. Return the complete product to the place of purchase for inspection, repair or replacement.

### Installation directions

Remove all packaging material from the product and be careful not to throw away accessories that may be hidden within the packaging material.

#### **Installation of the micro SD card (Figure A)**

1. Press the camera module until it rotates about 70°.
2. Remove the cover of the SD card slot using the screwdriver provided.

**NOTE: The screw is an anti-theft screw, which must be unscrewed by the screwdriver provided.**

3. Uncover the plastic plug.
4. Install the SD card onto the slot.
5. Install the plastic plug and the cover back to the camera module. Rotate the camera module back to its original position.

#### **Installation of the luminaire (Figure.B)**

1. Switch off the power before commencing the installation.
2. Loosening the screw on the bottom part using the screwdriver provided.

**NOTE: The screw is an anti-theft screw, which must be unscrewed by the screwdriver provided.**

3. Remove the mounting bracket by pressing the button (A) and pulling (B).
  4. Use the mounting bracket as a template to mark the screw position on the wall.
  5. Remove the cord anchorage by loosening the two screws. Insert the supply cable through the cable entry.
  6. Install the mounting bracket on the wall by using appropriately sized mounting screws and anchors.
  7. Ensure the screws and anchors used are suitable for mounting surface and the surrounding environment.
- NOTE: It is recommended that a non-corrosive bead of silicone be applied before installation onto the wall, ensuring that no water can run down into the cabling.**
8. Connect the mains supply wire to the luminaire using the terminal block provided. Ensure that the wires are secure and no bare wires are exposed.

## Mains Supply Wire

Earth – Yellow/Green

Live – Brown or Red

Neutral – Blue or Black

## Terminal block

Yellow/Green or 

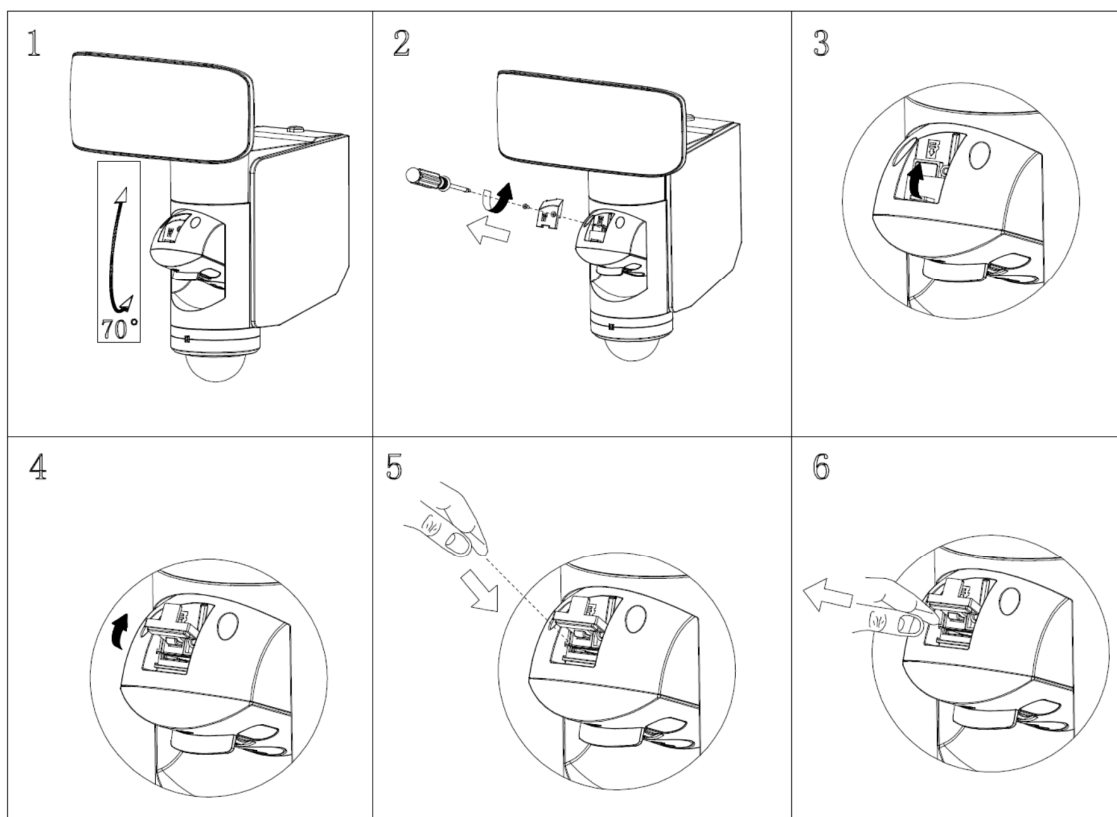
Live (L)

Neutral (N)

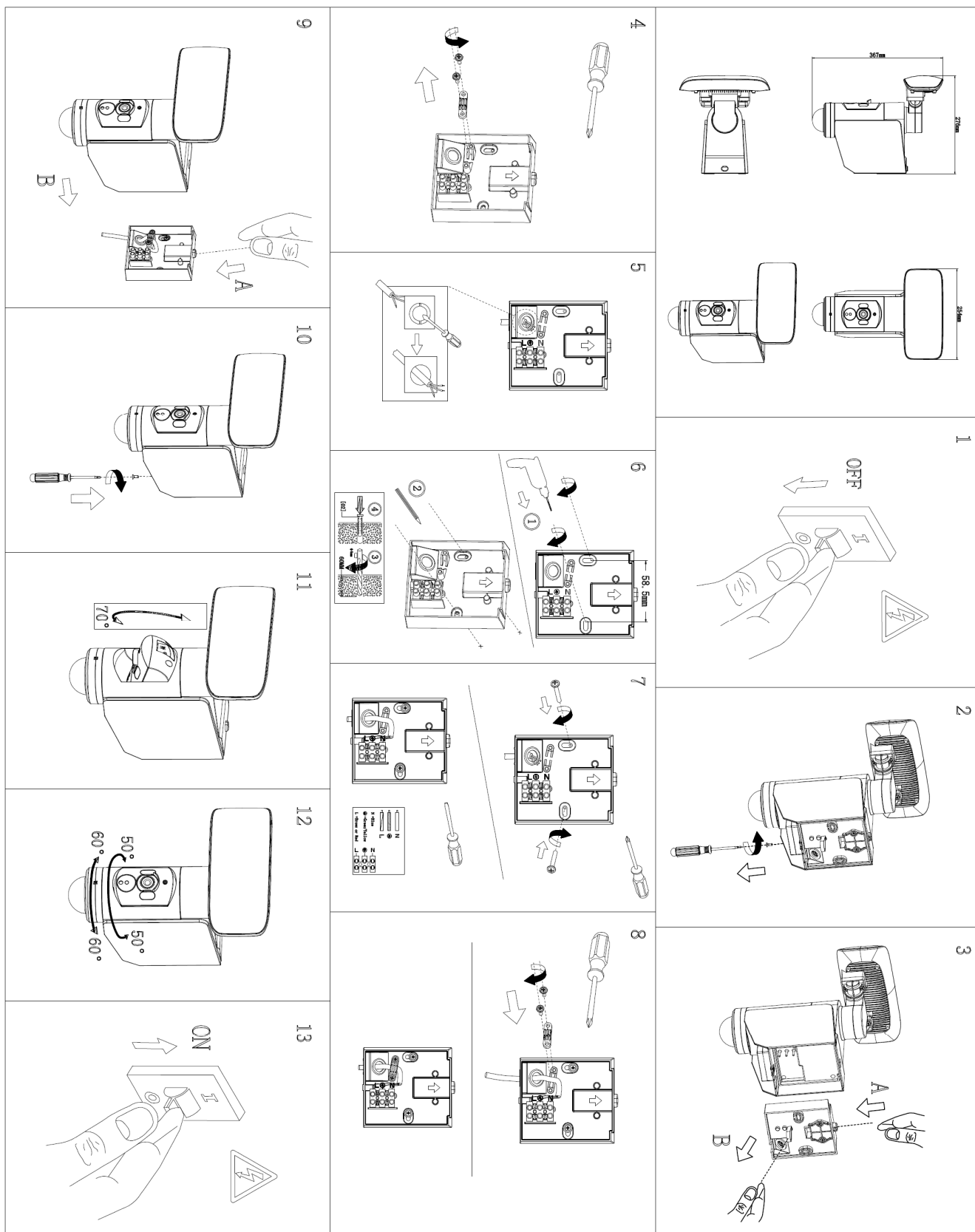
Install the cord anchorage back and ensure the supply cable is firmly clamped.

9. Install the luminaire back onto the mounting bracket.
10. Retighten the screw on the bottom part of the luminaire.
11. Adjust the angle of the camera according to your need.
12. Adjust the angle of the luminaire and the PIR sensor according to your need.
13. Make any final adjustments to the luminaire and check that all parts are secured tightly before turning the power on.
14. Turn on the power and **set up the wireless & in-app control according to the 'Lucci CONNECT user guide'**.

**Figure A – Installation of the micro SD card**



**Figure B – Installation of the luminaire**



## PIR sensor information

### **PIR (PASSIVE INFRA-RED) SENSOR:**

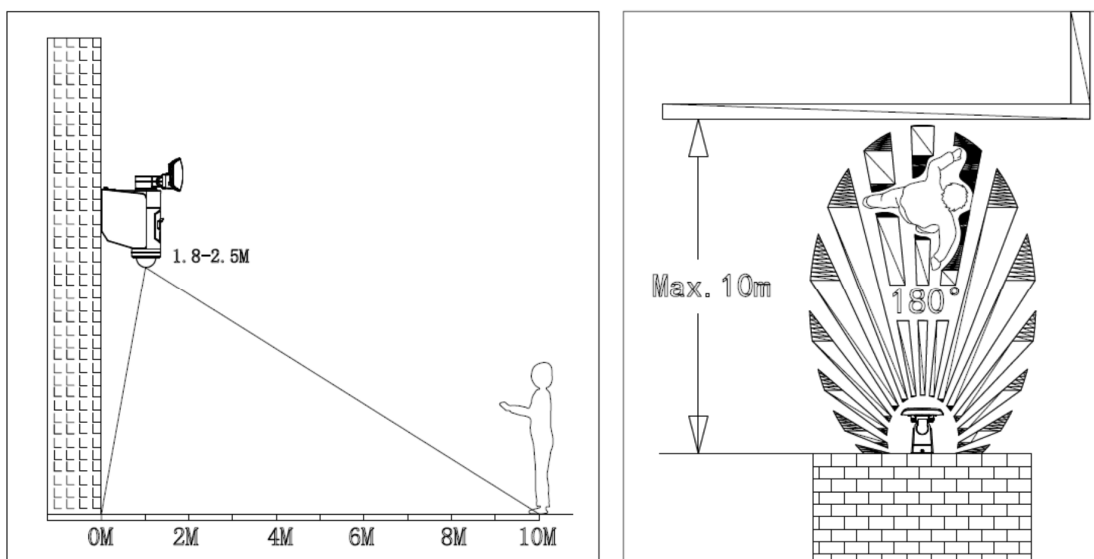
The fitting has a PIR (Passive Infra-Red) sensing device which continuously scans the operating zone and immediately switches the light on when it detects movement in that area. Whenever movement is detected within the range of the sensor, the light will switch on automatically to illuminate the area. While there are movements within the sensor range, the light will remain on.

### **SENSOR LOCATION & INFORMATION:**

To find a suitable location for installation, please take into consideration the following points:

- The ideal mounting height for the fitting is between 1.8m to 2.5m above the detection area.
- The detection area is approximately a maximum of 10 metres away at an angle of 180° wide; this may vary depending on the mounting height and location.
- The detection area may also alter at different temperatures. PIR sensors are more sensitive in cold weather than warm weather.
- The sensor has better sensitivity with movement across the detection area.
- The sensor has reduced sensitivity with movement towards and away from the detection area.
- If movement is made walking directly towards or away from the sensor and not across, the apparent detection range will be substantially reduced.
- To avoid false triggering; the sensor should be directed away from potential heat sources, such as barbecues, air-conditioners, air vent etc.
- Avoid installing the fitting in close proximity or on the same circuit to any fluorescent light fittings or ceiling fans. RFI (Radio Frequency Interference) may cause the fitting to switch on unintentionally.
- Do not aim the sensor towards reflective surfaces, such as smooth white walls, swimming pools etc.
- To avoid damage to the sensor, do not aim the sensor towards the sun.
- It is recommended that the fitting is installed on its own switch and does not interconnect with other lights on the same switch as it may cause false triggering.

**NOTE: The duration time, lux level, sensitivity, and override mode of the PIR Sensor can be adjusted via the 'Lucci Connect' APP.**



## Safety tips

- Always ensure the power is OFF and the luminaire has cooled down before performing any maintenance, cleaning, or making any adjustment to the luminaire.
- To avoid injury or damage to the luminaire, ensure that power leads and screws are secure before connecting the power.
- The luminaire must not be used if the shades have been cracked. Replace any cracked protective shield.
- The light source of this luminaire is not replaceable; when the light source reaches its end of life, the whole luminaire shall be replaced.
- Ensure that the luminaire does not come in contact with corrosive chemicals/solvents or abrasive cleaners etc.
- To clean, wipe with a damp clean cloth. Do NOT soak or immerse the product in water or other liquids.

## Specifications

SKU #	240915
Colour	Black
Rated Voltage	220-240V~ 50Hz
Rated Wattage	20W
LED Specs	1500 lumen, CCT 4000K, CRI > 80, Dimmable via Lucci Connect App* (* Not suitable with dimmer switch)
IP Rating	IP44
Additional Features (In-app control)	Motion detection notification, Two-way audio, Security camera (Live view & playback), Buzzer alarm
PIR Sensor spec	Detection range & angle: Max.10M, 180° Required installation height: 1.8 – 2.5M Lux & Time adjustment: 0 – 200lux, 10s-10min/3hours/6hours/D2D.
Camera spec	2 Mega (1980*1080) pixel resolution, visual angle 130° Night vision
Audio spec	Two-way audio, speaker 4Ω, 3W
Storage card	Micro SD card (Max.128G, FAT32)
Security	Anti-theft screw for Mounting bracket & SD card slot
Weight	1.0kg
Dimensions	H:250mm W:170mm E:210mm