

SHEPHRD FLOOD LIGHT WITH SENSOR

SKU# 246100, 246101, 246104, 246105

Rated Voltage 220-240V~ 50Hz

Thank you for purchasing this quality Lucci product. To ensure correct function and safety, please read and follow all instructions carefully before assembly, installation and use of this product. Please keep instructions for future reference.

Warranty

- This luminaire is covered by a 5-year warranty. The warranty is from date of purchase, not the date of installation.
- If the luminaire is not assembled and installed by a licensed electrician, the warranty will be void.
- Please retain the proof of purchase and evidence of installation by a licensed electrician for any warranty enquiries.
- Warranty will be void if there is any damage due to improper usage or modification to the luminaire.
- Failure to comply with the instructions in this manual may increase the risk of damage or injury and will void the warranty.

Installation Requirements

- Must be assembled and installed by a licensed electrician.
- All wiring and installation of the luminaire must adhere to latest local and national wiring rules.
eg. AS/NZS 3000 Electrical installations.
- This luminaire is not suitable for use with dimmer switches and should not be used on a circuit which has a dimmer.
- Select a suitable location for installation:
 - It is suitable for indoor or outdoor use.
 - This luminaire is suitable for protected against water penetration to IP44 standards, which is water splashing from every direction. This must be maintained during installation.
 - The mounting point must support 2 times the weight of the luminaire.
- Take care not to pull any electrical wires during unpacking as this may damage the connection.
- Lay out all the components on a smooth surface and make sure there are no components missing before assembling. If parts are missing, return the complete product to the place of purchase for inspection or replacement.
- Check whether the luminaire has been damaged during transport. Do not operate/install any product which appears damaged in any way. Return the complete product to the place of purchase for inspection, repair or replacement.

Installation Directions

1. Remove all packaging material from the product and be careful not to throw away accessories that may be hidden within the packaging material. If assembly is required, place the luminaire on a smooth non-scratch surface.
2. Ensure power to the circuit you are working on has been switched OFF before commencing any electrical work.
3. Remove the mounting bracket from the luminaire by loosening the screws.

NOTE: Press the release the button then pull out the mounting bracket.

4. Use the mounting bracket as a template to mark the screw positions on the wall.
5. Install the mounting bracket onto the wall by using appropriately sized mounting screws and anchors. Ensure the screws and anchors used are suitable for the mounting surface and the surrounding environment.

NOTE: A non-corrosive bead of silicone MUST be applied before installation onto the wall ensuring that no water can run down into the cabling.

6. Connect the mains supply wire to the terminal block. Ensure the wires are secure and no bare wires are exposed. Secure the mains supply wire with the cord anchorage on the mounting bracket.

Installation Instructions

Mains Supply Wire

Earth – Yellow/Green 

Neutral – Blue or Black

Live – Brown or Red

Luminaire Wire

Yellow/Green or 

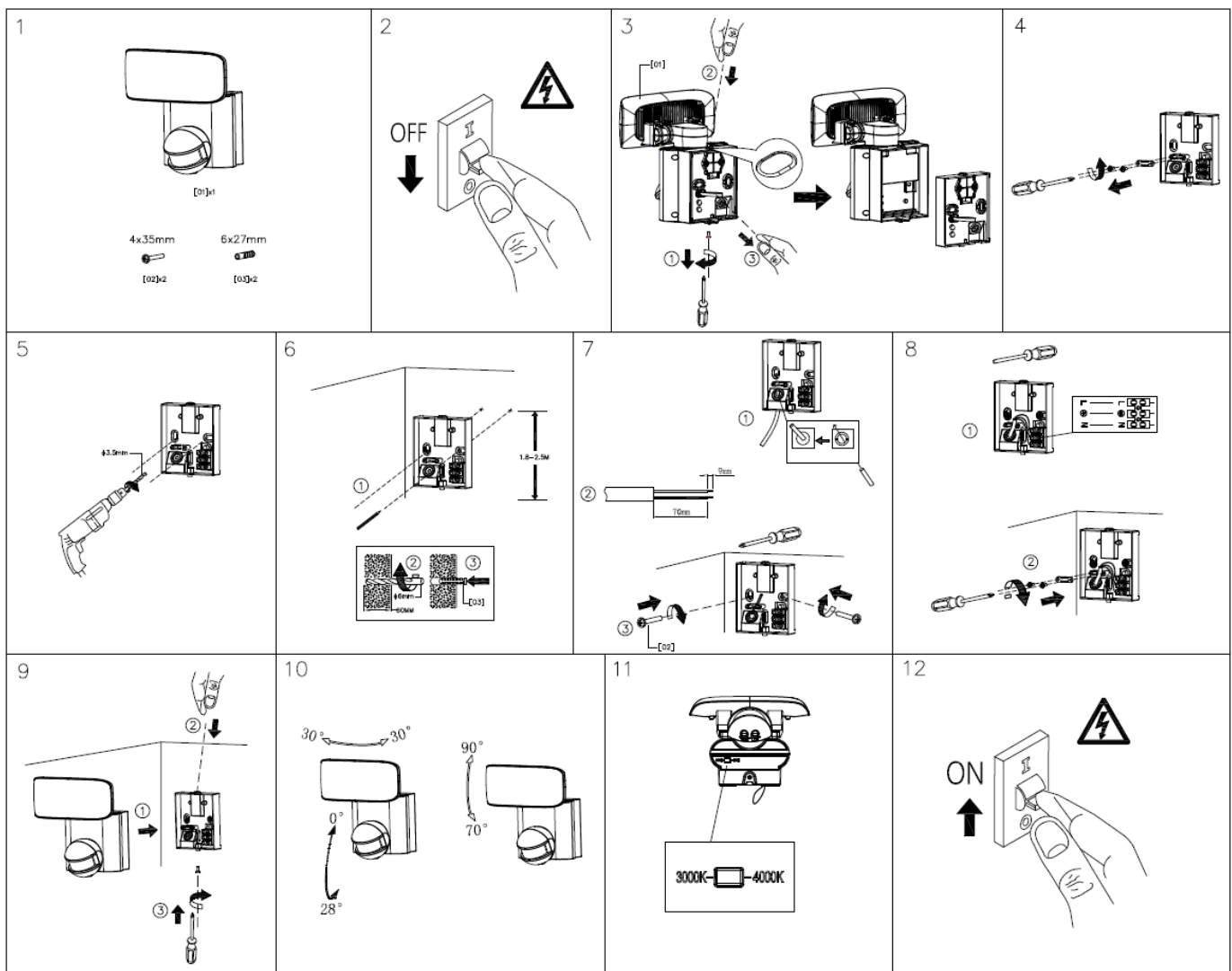
Blue or N

Brown or L

7. Install the luminaire back onto the mounting bracket and secure by tightening the screws.
8. Adjust the CCT switch (3000K or 4000K) according to your need.
9. Adjust the setting of the PIR sensor according to your need.
10. After the installation is complete, turn the power to the circuit ON and test all the lighting functions of the luminaire before the licensed electrician leaves.

Refer to the 'PIR Sensor Information' section for more information.

NOTE: DO NOT rotate over the specified angles, which may damage the internal wires.



PIR sensor information

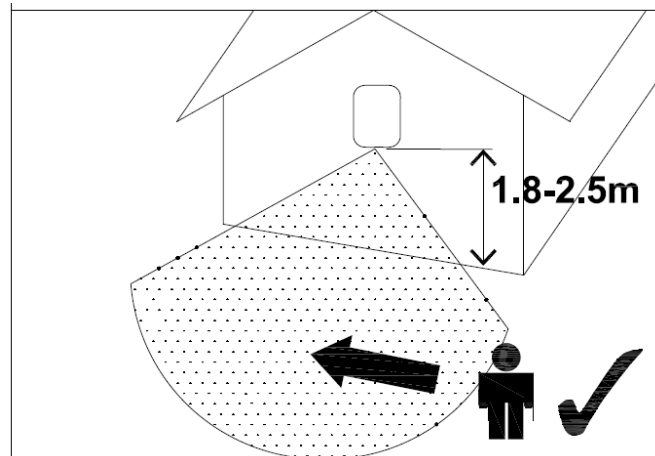
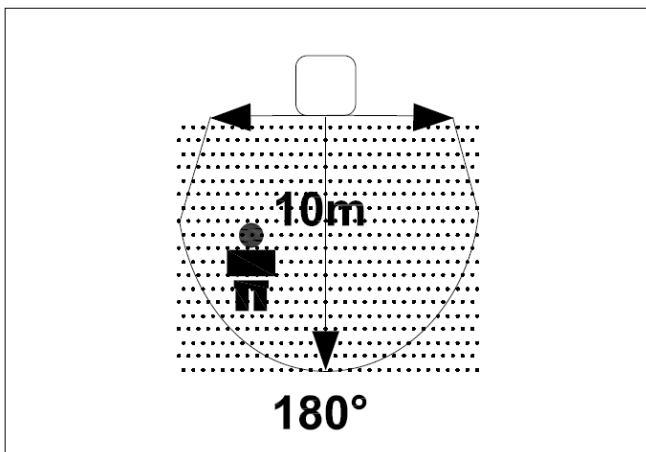
PIR (PASSIVE INFRA RED) SENSOR:

The fitting has a PIR (Passive Infra Red) sensing device which continuously scans the operating zone and immediately switches the light on when it detects movement in that area. Whenever movement is detected within the range of the sensor, the light will switch on automatically to illuminate the area. While there is movement within the sensor range, the light will remain on.

SENSOR LOCATION & INFORMATION:

To find a suitable location for installation, please take into consideration the following points:

- The ideal mounting height for the fitting is between 1.8m to 2.5m above the detection area.
- The detection area is approximately maximum 10 metres away at an angle of 180° wide. This may vary depending on the mounting height and location.
- The detection area may also alter at different temperatures. PIR sensors are more sensitive in cold weather than warm weather.
- The sensor has better sensitivity with movement across the detection area.
- The sensor has reduced sensitivity with movement towards and away from the detection area.
- If movement is made walking directly towards or away from the sensor and not across, the apparent detection range will be substantially reduced.
- To avoid false triggering, the sensor should be directed away from potential heat sources, such as barbecues, air-conditioners, air vent etc.
- Avoid installing the fitting in close proximity or on the same circuit to any fluorescent light fittings or ceiling fans. RFI (Radio Frequency Interference) may cause the fitting to switch on unintentionally.
- Do not aim the sensor towards reflective surfaces, such as smooth white walls, swimming pools etc.

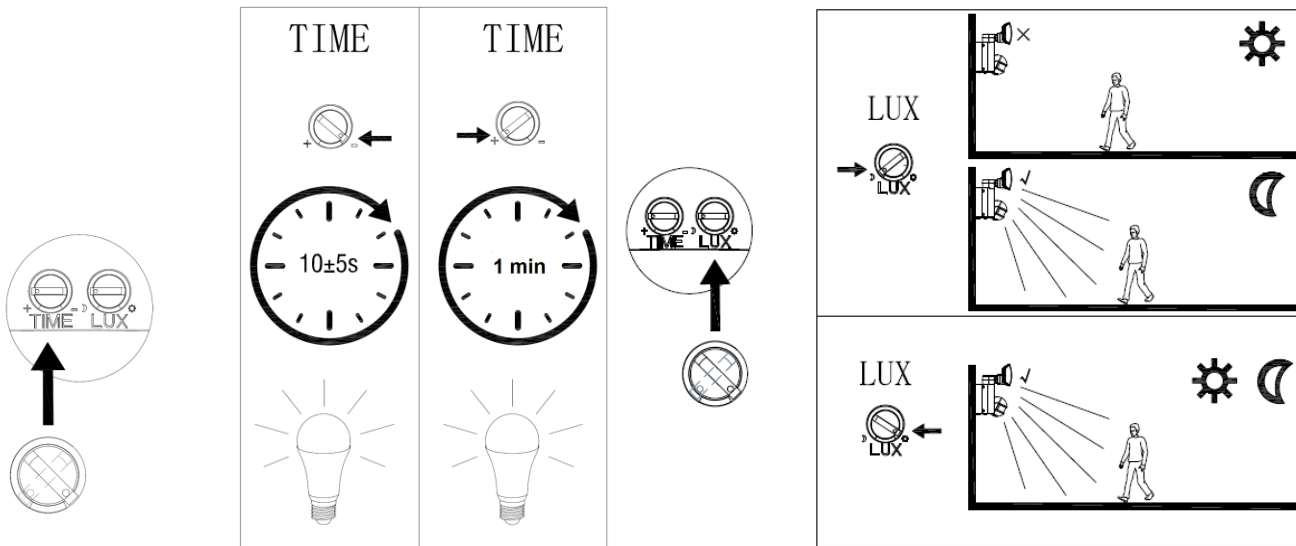


SENSOR SWITCH SETTINGS:

DURATION TIME: The time of the light remain switched on after activation can be adjusted from 10 secs to 1 mins. Adjust the timer switch clockwise to the minimum position then the fitting will activate and last 10 secs before turn off. Adjust the timer switch anti-clockwise to the maximum position then the fitting will activate and last 1 mins before turn off.

LUX LEVEL: The lux control module has a built-in sensing device (photocell) that detects daylight and darkness. Adjust the lux-level switch anti-clockwise to the minimum position then the fitting will work at both day and night. Adjust the lux-level switch clockwise to the maximum position then it will only work at night.

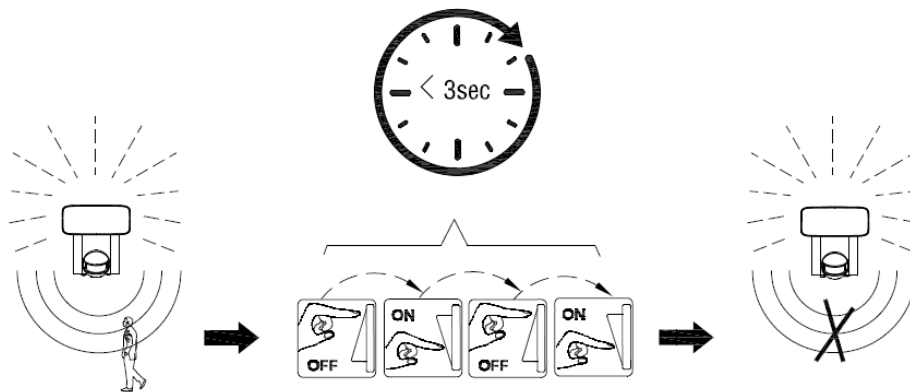
NOTE: If you want to test the detection area of the PIR sensor, please wait for the ambient light level is below 10 lux.



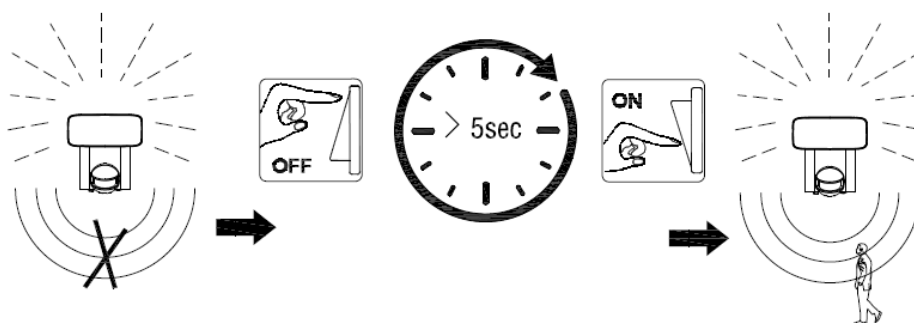
MANUAL MODE (SENSOR OVERRIDE FUNCTION):

Sensor override mode is used when you would like the luminaire to be constantly on. The PIR sensor will be disabled and not affected by the duration time and lux level settings.

- 1) To switch into the sensor override mode, turn on the wall switch twice within three seconds. (Wall switch action: OFF → ON → OFF → ON.) Then the PIR sensor will be deactivated.
- 2) The PIR sensor can be activated again by turning the luminaire OFF then wait for more than 5 second to switch the luminaire on again. (Wall switch action: OFF → Wait for > 5S → ON).



1) Deactivate the PIR sensor



2) Activate PIR sensor

Safety Tips

- Always ensure the power is OFF and the luminaire has cooled down before performing any maintenance, cleaning or making any adjustment to the luminaire.
- To avoid injury or damage to the luminaire, ensure that power leads and screws are secure before connecting the power.
- To clean, wipe with a soft damp cloth. Do NOT soak or immerse the luminaire in water or other liquids.
- Ensure that the luminaire does not come in contact with corrosive chemicals/solvents or abrasive cleaners etc.
- The luminaire must not be used if the protective shield or shade has been cracked or damaged. The luminaire shall be discarded if the protective shield or shade is cracked or damaged.
- The light source of this luminaire is not replaceable; when the light source reaches its end of life, the whole luminaire shall be replaced.
- There are no serviceable parts inside the sensor, do not attempt to dismantle or open the sensor.

Specifications

SKU #	246100	246104	246101	246105
Colour	Black	White	Black	White
Lights	1 Light		2 Lights	
Rated Voltage	220 – 240V~			
Rated Wattage	20W			
LED Specs	2000 lumen, CCT 3000K / 4000K CRI > 80, Non-Dimmable			
IP Rating	IP44			
PIR Sensor	Detection range & angle: Max.10M, 180° Required installation height: 1.8 – 2.5M Lux & Time adjustment: 10 – 1000lux, 10s – 1min.			
Weight	0.65 kg			
Dimensions	H:180mm W:170mm E:125mm		H:180mm W:230mm E:125mm	