

WANAKA 1 LIGHT WALL LIGHT

SKU# 246110, 239659

Rated Voltage 220-240V~ 50Hz

To ensure correct function and safety, please read and follow all instructions carefully before assembly, installation and use of this product. Please keep instructions for future reference.

Warranty

- This luminaire is covered by a 5-year warranty. The warranty is from the date of purchase, not the date of installation.
- If the luminaire is not assembled and installed by a licensed electrician, the warranty will be void.
- Please retain the proof of purchase and evidence of installation by a licensed electrician for any warranty enquiries.
- Warranty will be void if there is any damage due to improper usage or modification to the luminaire.
- Failure to comply with the instructions in this manual may increase the risk of damage or injury and will void the warranty.

Installation Requirements

- This luminaire must be assembled and installed by a licensed electrician.
- All wiring and installation of the luminaire must adhere to the latest local and national wiring rules. E.g. AS/NZS 3000 Electrical Installations.
- This luminaire is a Class II product, this must be maintained during wiring and installation of the luminaire.
- Do not exceed the maximum wattage rating.
- Select a suitable location for installation:
 - The mounting point must be able to support 2 times the weight of the luminaire.
 - This luminaire is protected against water penetration to IP65 standards, which is against low-pressure jets of water from all practicable directions. The IP65 rating must be maintained during wiring and installation.
- The luminaire must not be used if the protective shield or shade has been cracked or damaged. Replace the protective shield or shade before using the luminaire.
- Take care not to pull any electrical wires during unpacking as this may damage the connection.
- Lay out all the components on a smooth surface and make sure there are no components missing before assembling. If parts are missing, return the complete product to the place of purchase for inspection or replacement.
- Check whether the luminaire has been damaged during transport. Do not operate/install any product which appears damaged in any way. Return the complete product to the place of purchase for inspection, repair or replacement.

Installation Directions

1. Remove all packaging material from the product and be careful not to throw away accessories that may be hidden within the packaging material. If assembly is required, place the luminaire on a smooth non-scratch surface.
2. Ensure power to the circuit you are working on has been switched OFF before commencing any electrical work. (Fig. 1)
3. Remove the back plate from the luminaire by loosening the nuts and washers from the front of the luminaire.

NOTE: Keep the nuts and washers in a safe location, they are required for installation later.

4. Use the back plate as a template to mark the screw positions on the wall. (Fig. 1)
5. Install the back plate on the wall by using appropriately sized mounting screws and anchors. Ensure the mounting screws and anchors used are suitable for the mounting surface and the surrounding environment. (Fig. 2)

NOTE: A non-corrosive bead of silicon MUST be applied before installation onto the wall ensuring that no water can run down into the cabling or the mounting screws.

NOTE: Follow the mounting direction on the back plate.

6. Slide the heat shrink tube over the terminal block and onto the luminaire wires (Fig. A)
7. Connect the mains supply wire to the terminal block. (Fig. B)

Mains Supply Wire

Neutral – Blue or Black

Live – Brown or Red

Luminaire Wire / Terminal label

Blue or N

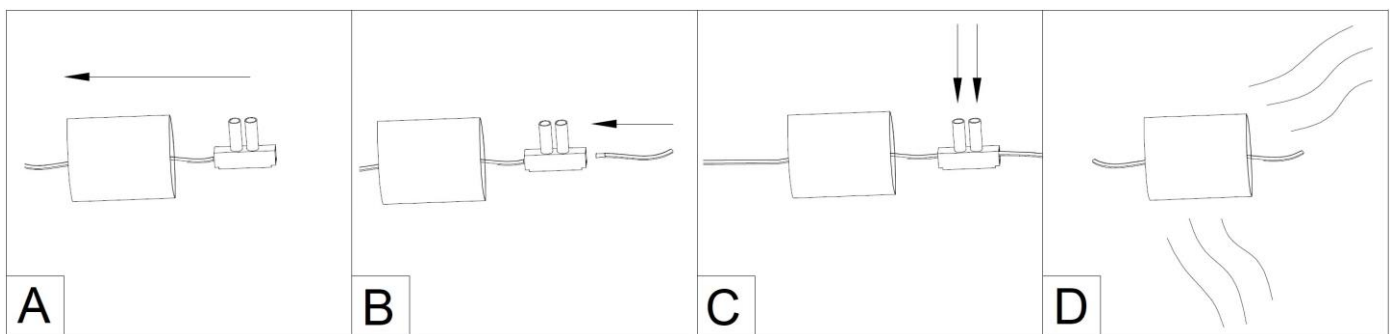
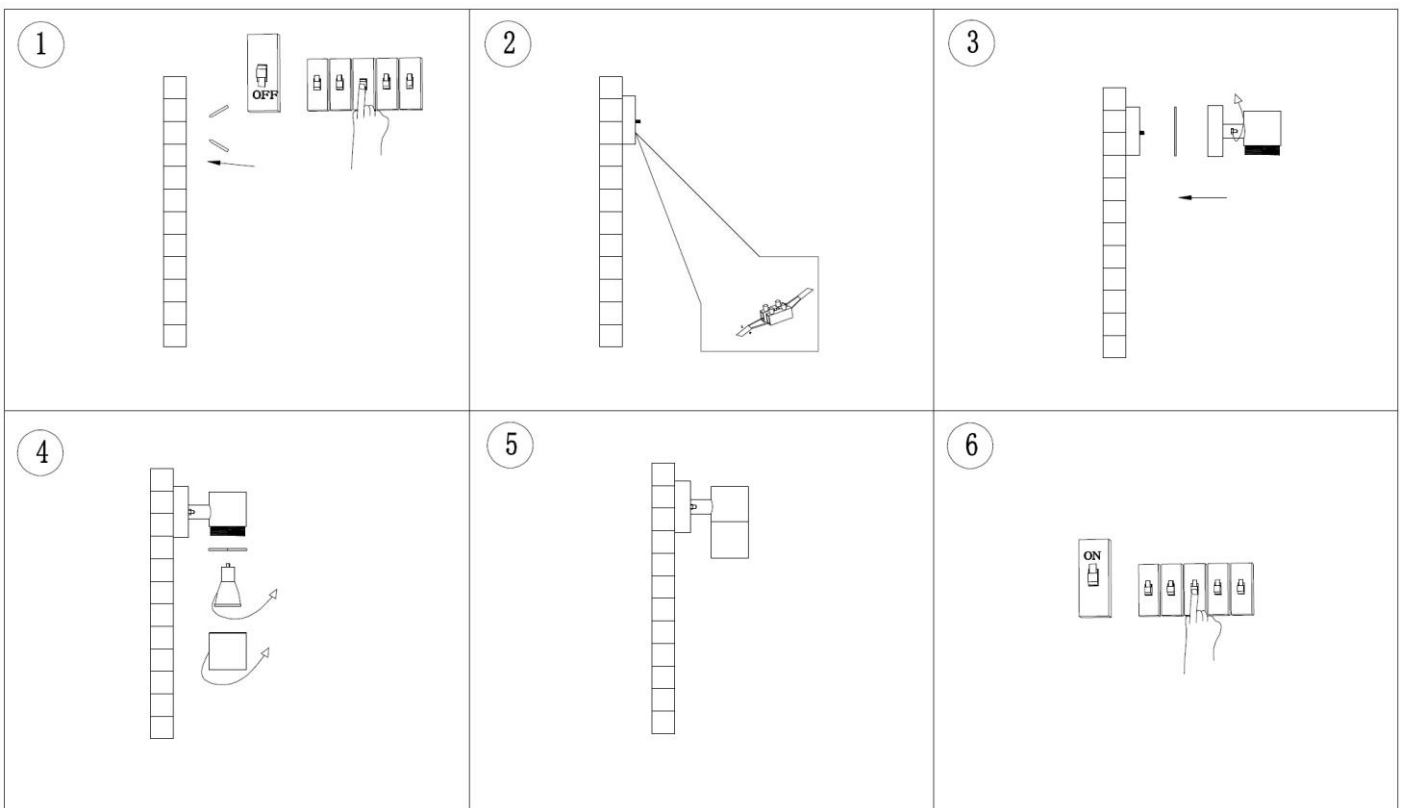
Brown or L

NOTE: This luminaire is a Class II product and must be maintained during wiring and installation.

8. Ensure the wires are secure and no bare wires are exposed. (Fig. C)
9. Slide the heat shrink tube over the terminal block so it covers both sides of the terminal block. (Fig. D)
10. Apply heat to the tube until it is tightly secured to the terminal block and wires. (Fig. D)

NOTE: THE INSTALLING ELECTRICIAN MUST ENSURE THE SUPPLY WIRE MAINTAINS DOUBLE INSULATION AFTER CONNECTING TO THE TERMINAL BLOCK.

11. Install the luminaire onto the back plate and secure using the washer and nuts. (Fig. 3)
 12. Install a LED globe (not included) into the lamp holder and install the shade back onto the luminaire. (Fig. 4)
- NOTE: Do not exceed the maximum wattage rating. This luminaire is suitable for use with LED globes only.**
13. Check that all parts are done up tightly before turning on. (Fig. 5)
 14. Switch on the luminaire to test and enjoy your new lighting product. (Fig. 6)



Safety Tips

- Always ensure the power is OFF and the luminaire has cooled down before performing any maintenance, cleaning, changing the globe or making any adjustment to the luminaire.
- To avoid injury or damage to the luminaire, ensure that power leads and screws are secure before connecting the power.
- The luminaire must not be used if the protective shield or shade has been cracked or damaged. Replace the protective shield or shade before using the luminaire
- To clean, wipe with a soft damp cloth. Do NOT soak or immerse the luminaire in water or other liquids.
- Ensure that the luminaire does not come in contact with corrosive chemicals/solvents or abrasive cleaners etc.

Specifications

SKU #	246110	239659
Colour	Matte Black	White
Rated Voltage	220-240V~ 50Hz	
Rated Wattage	10W Max. (LED globes only)	
Lamp Holder	GU10	
Protection Class	Class II	
IP Rating	IP65	
Weight	0.2kg	
Dimensions	H:120mm W:77mm E:110mm	