

## BASE LED FLOOD LIGHT

SKU# 246127, 246128

Rated Voltage 220-240V~ 50Hz

To ensure correct function and safety, please read and follow all instructions carefully before assembly, installation and use of this product. Please keep instructions for future reference.

### Warranty

- This luminaire is covered by a 5-year warranty. The warranty is from date of purchase, not the date of installation.
- If the luminaire is not assembled and installed by a licensed electrician, the warranty will be void.
- Please retain the proof of purchase and evidence of installation by a licensed electrician for any warranty enquiries.
- Warranty will be void if there is any damage due to improper usage or modification to the luminaire.
- This luminaire is not suitable for use with dimmer switches. Warranty will be void if the luminaire is used on the same circuit, which has a dimmer switch.
- Failure to comply with the instructions in this manual may increase the risk of damage or injury and will void the warranty.

### Installation Requirements

- This luminaire must be assembled and installed by a licensed electrician.
- All wiring and installation of the luminaire must adhere to the latest local and national wiring rules.  
E.g. AS/NZS 3000 Electrical Installations.
- This luminaire is a Class I product and must be earthed during wiring and installation.
- This luminaire is rated IP65 this must be maintained during wiring and installation
- Select a suitable location for installation:
  - This luminaire is suitable for wall and ceiling mount, follow the directional label during installation for wall mounting only.
  - The mounting point must be able to support 2 times the weight of the luminaire.
  - This luminaire is protected against water penetration to IP65 standards, which is against low-pressure jets of water from all practicable directions.
- The luminaire is not suitable to use with dimmer switches and must not be used with a circuit which has a dimmer.
- If the diffuser is damaged or cracked. For your safety, discontinue use and replace the luminaire, the diffuser is non-replaceable.
- The colour temperature selection MUST be made during the installation, as the switch can only be accessed by a licensed electrician.
- Take care not to pull any electrical wires during unpacking as this may damage the connection.
- Lay out all the components on a smooth surface and make sure no components are missing before assembling. If parts are missing, return the complete product to the place of purchase for inspection or replacement.
- Check whether the luminaire has been damaged during transport. Do not operate/install any product which appears damaged in any way. Return the complete product to the place of purchase for inspection, repair or replacement.

Installation Directions

- 1. Remove all packaging material from the product and be careful not to throw away accessories that may be hidden within the packaging material. If assembly is required, place the luminaire on a smooth non-scratch surface.
- 2. Ensure power to the circuit you are working on has been switched OFF before commencing any electrical work.(Fig. 1)
- 3. Remove the back plate from the luminaire by loosening the screws from the side with the supplied Allen Key. (Fig. 2)



**NOTE: Carefully place the screws, aside, they are required to be re-installed later.**

- 4. Use the back plate as a template to mark the screw positions on the mounting surface. (Fig. 3)
- 5. Drill the screw holes on the mounting surface. (Fig. 4)
- 6. Install the back plate onto the mounting surface by using appropriately sized mounting screws and anchors. Ensure the screws and anchors are suitable for the mounting surface and the surrounding environment. (Fig. 5)

**NOTE: A non-corrosive bead of silicone MUST be applied before installation onto the wall ensuring that no water can run down into the cabling**

**NOTE: Follow the direction label on the back plate for wall mounting only.**

- 7. Connect the mains supply wire to the terminal block. Ensure the wires are secure and no bare wires are exposed. (Fig. 6)

Mains Supply Wire	Luminaire Wire / Terminal label
Earth – Yellow/Green 	Yellow/Green or 
Neutral – Blue or Black	Blue or N
Live – Brown or Red	Brown or L

**NOTE: This luminaire is a Class I product and must be earthed during the wiring and installation.**

- 8. Select the colour temperature by flicking the switch inside the luminaire. (Fig. 8)  
WW – Warm White 3000K / NW – Daylight 5000K / CW – Cool White 4000K

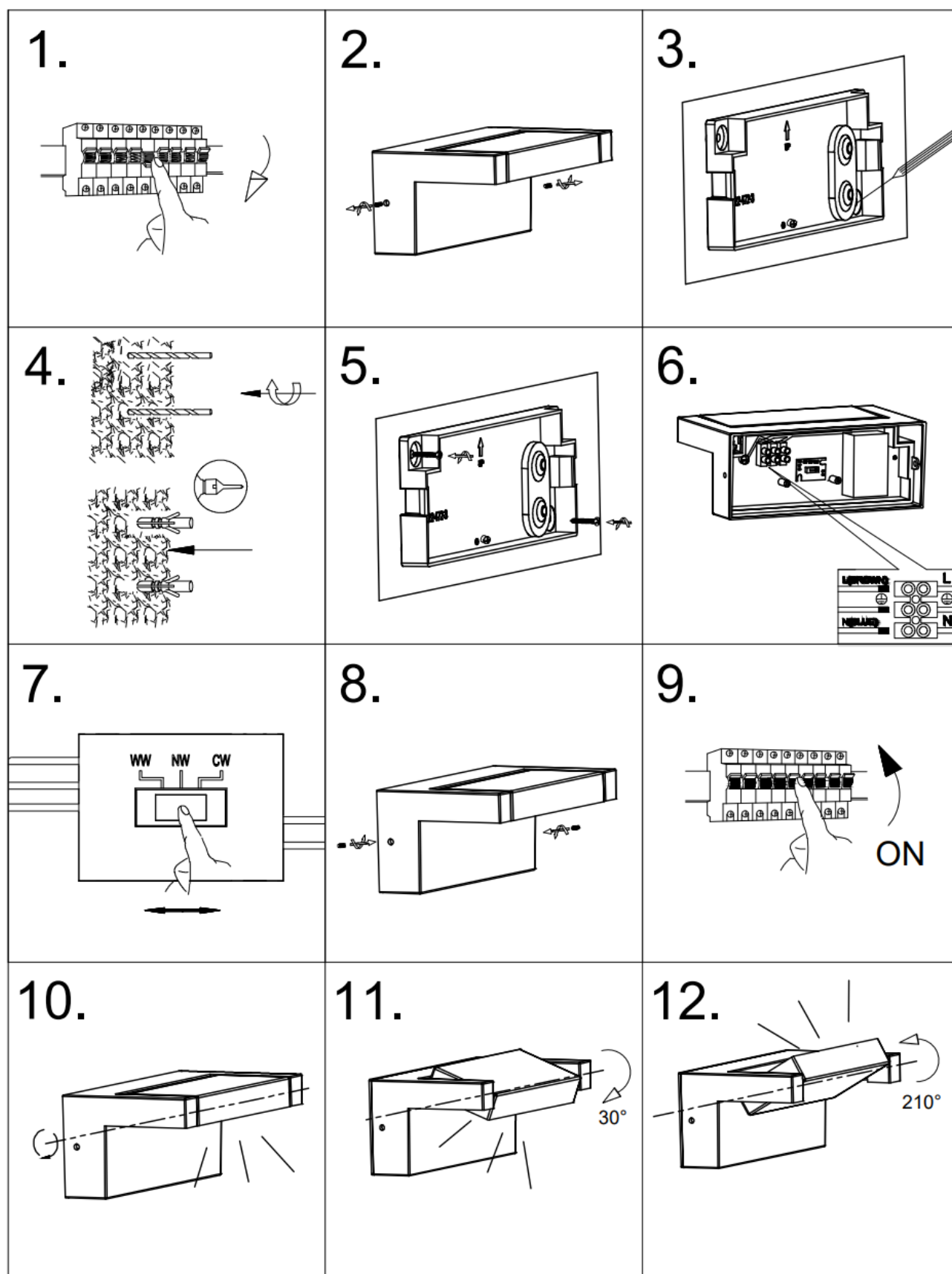
**NOTE: The colour temperature selection MUST be made during the installation as the switch can only be accessed by a licensed electrician.**

- 9. Install the luminaire back onto the back plate and secure by tightening the screws to the side of the luminaire. (Fig. 8)

**NOTE: This luminaire is rated IP65 this must be maintained during wiring and installation.**

- 10.After the installation is complete, turn the power to the circuit ON and test all the lighting functions of the luminaire. (Fig. 9)
- 11.Adjust the luminaire to your desired angle (Fig. 10,11,12)

**NOTE: Do not adjust the luminaire and up more than 210° and down more than 30°, as this may damage the internal wiring.**



**NOTE:** Do not adjust the luminaire and up more than 210° and down more than 30°, as this may damage the internal wiring.

Safety Tips

- Always ensure the power is OFF and the luminaire has cooled down before performing any maintenance, cleaning or making any adjustment to the luminaire.
- To avoid injury or damage to the luminaire, ensure that power leads and screws are secure before connecting the power.
- To clean, wipe with a soft damp cloth. Do NOT soak or immerse the luminaire in water or other liquids.
- Ensure that the luminaire does not come in contact with corrosive chemicals/solvents or abrasive cleaners etc.
- If the diffuser is damaged or cracked. For your safety, discontinue use and replace the luminaire, the diffuser is non-replaceable
- The light source of this luminaire is not replaceable; when the light source reaches its end of life, the whole luminaire shall be replaced. There are no serviceable parts, do not attempt to dismantle or open the luminaire.

Specifications

SKU #	246127	246128
Colour	Black	White
Rated Voltage	220-240V~ 50Hz	
Rated Wattage	18W	
LED Specs	Non-dimmable , Colour shifting LEDs*, CRI>80	
Rated Lumens	3000K – 1600 lumens 5000K – 1700 lumens 4000K – 1800 lumens	
IP Rating	IP65	
Weight	0.9kg	
Dimensions	H:80mm W:203mm E:108mm	