

NERO LED TABLE LAMP

SKU# 250890

Rated Voltage 5V DC, 1A

Thank you for purchasing this quality Lucci product. To ensure correct function and safety, please read and follow all instructions carefully before assembly, installation and use of the product. Please keep the instructions for future reference.

Warranty

- This product is covered by a 3 year warranty from the date of purchase. Please retain proof of purchase.
- Warranty will be void if there is any damage due to improper usage or modification to the product.
- Failure to comply with the instructions in this manual may increase the risk of damage or injury and will void warranty.

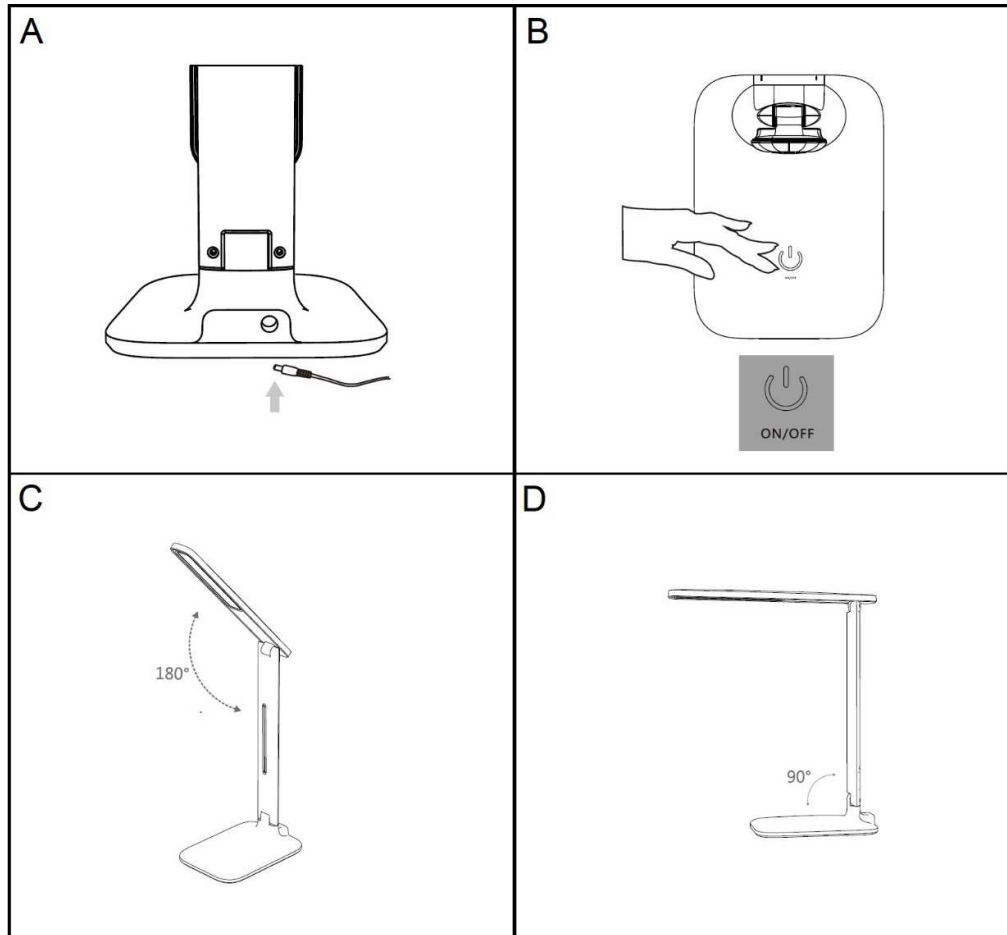
Installation Requirements

- Select a suitable location for this luminaire:
 - Ensure it is on a flat and stable surface.
 - This luminaire is suitable for indoor use only.
 - Do not place flammable material near or over the luminaire.
 - Ensure the luminaire is not installed in direct line of an air vent/system.
 - If the luminaire is placed in an area prone to moisture, ensure that the area is well ventilated and an appropriately rated exhaust fan is used if required. Damage or corrosion caused by moisture is not a product fault, and as such is not covered under warranty.
- Only use the supplied plug in LED driver with this portable lamp.
- Take care not to pull any electrical wires during unpacking as this may damage the connection.
- Lay out all the components on a smooth surface and make sure there are no components missing before assembling. If parts are missing, return the complete product to the place of purchase for inspection or replacement.
- Check whether the luminaire has been damaged during transport. Do not operate/install any luminaire which appears damaged in any way. Return the complete product to the place of purchase for inspection, repair or replacement.
- Do not plug into the mains power socket outlet before or during assembly. Only do so after the luminaire is fully assembled and is ready to use for the first time.

Installation Directions

1. Remove all packaging material from the luminaire.
2. Insert the plug from the power adaptor into the base of the portable lamp. (Fig. A)
3. Insert the power adaptor into the mains socket outlet and ensure it is fully plugged in.
4. Use the ON/OFF button on the base of the portable lamp for on/off, dimming and colour shift function. (Fig. B)
 - Tap the button once and the luminaire will turn on at low brightness.
 - Tap the button a second time and the luminaire will be at medium brightness.
 - Tap the button a third time and the luminaire will be at maximum brightness.
 - Press and hold the button to change the colour temperature.
 - This luminaire has 3-step colour shift function.
5. Adjust the arms to your preferred lighting angle. Ensure the portable lamp is stable after adjusting the arms.
 - The maximum angle of adjustment for the upper arm is 180°. (Fig. C)
 - The maximum angle of adjustment for the lower arm is 90°. (Fig. D)

NOTE: When adjusting the arms, do not adjust more than the angles shown in figure C & D, as this may damage the internal wiring and void the warranty.



Safety Tips

- Always ensure the power is OFF and the luminaire has cooled down before performing any maintenance, cleaning or making any adjustment to the luminaire.
- To avoid injury or damage to the luminaire, ensure that power leads and screws are secure before connecting the power.
- Young children should be supervised to ensure that they do not play with the portable lamp.
- Handle the luminaire and/or shade with care to avoid any damage or breakage.
- Select a suitable location away from liquids and hazards.
- To clean, wipe with a soft damp cloth. Do NOT soak or immerse the luminaire in water or other liquids.
- Ensure that the luminaire does not come in contact with corrosive chemicals/solvents or abrasive cleaners etc.

Specifications

SKU #	250890
Colour	Black
Rated Voltage	5V DC, 1A
Rated Wattage	Max. 5.5W (Including driver)
LED Specs	Max.210 Lumens, 3-step dimming, 3-stage colour shifting (3000K – 4200K – 5200K)
Weight	0.6kg
Dimensions	H:345mm W:120mm L:168mm Max.