

FINNLEY LED TABLE LAMP

SKU# 259970, 259971

Rated Voltage 5V DC, 1A

Thank you for purchasing this quality Lucci product. To ensure correct function and safety, please read and follow all instructions carefully before assembly, installation and use of the product. Please keep the instructions for future reference.

Warranty

- This fitting is covered by a 3 year warranty from the date of purchase. Please retain proof of purchase.
- Warranty will be void if there is any damage due to improper usage or modification to the product.
- Failure to comply with the instructions in this manual may increase the risk of damage or injury and will void warranty.

Installation Requirements

- Select a suitable location for this light fitting;
 - This product is suitable for indoor use only.
 - Do not place flammable material near or over the fitting.
 - Ensure the fitting is not installed in direct line of an air vent/system.
 - If installing a fitting in an area prone to moisture, ensure that the area is well ventilated and an appropriately rated exhaust fan is used if required. Damage or corrosion caused by moisture is not a product fault, and as such is not covered under warranty.
- Only use the supplied cable & plug-in LED driver with this fitting.
- Take care not to pull any electrical wires during unpacking as this may damage the connection.
- Lay out all the components on a smooth surface and make sure there are no components missing before assembling.
If parts are missing, return the complete product to the place of purchase for inspection or replacement.
- Check whether the fitting has been damaged during transport. Do not operate/install any product which appears damaged in any way. Return the complete product to the place of purchase for inspection, repair or replacement.
- Do not plug into the mains power socket outlet before or during assembly. Only do so after the portable lamp is fully assembled and ready to use for the first time.

Operation Directions

1. Plug the DC connector into the light fitting.
2. Connect the USB cable to the LED Driver, then plug the LED Driver to the main socket.
3. Press the ON/OFF button to switch on and dim the fitting.

This fitting has a 3 step dimming function, operating in the following order:

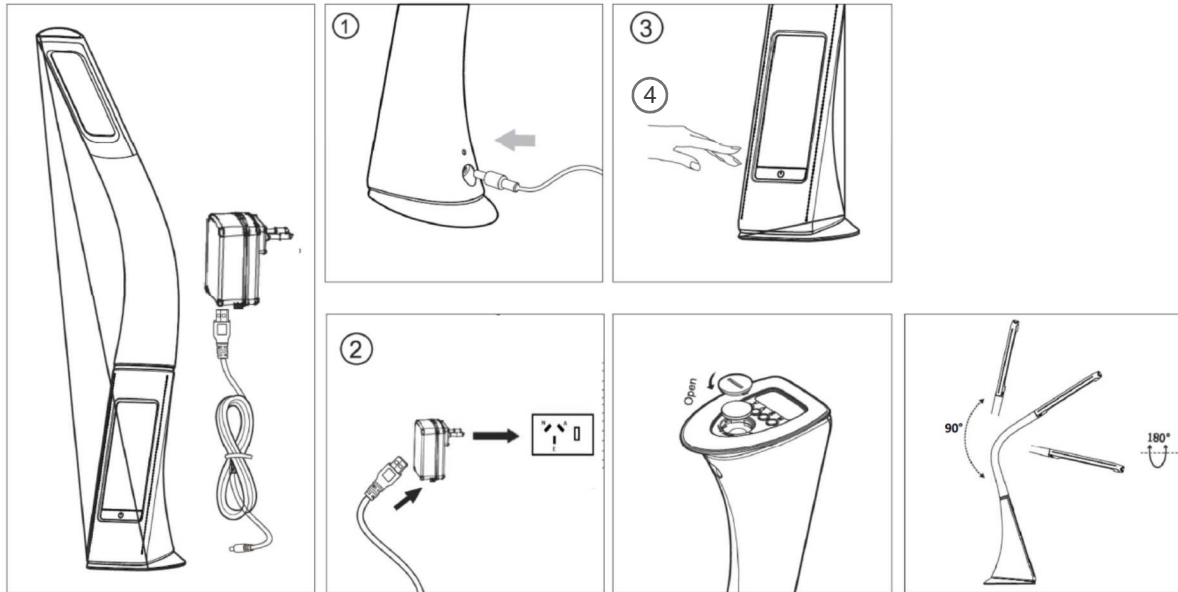
Press the button once, and the fitting will turn ON and light up at low brightness, approximately 10%.

Press the button a second time, and the fitting will light up at medium brightness, approximately 40%.

Press the button a third time, and the fitting will light up to the maximum brightness at 100%.

Press the button a fourth time, and the fitting will turn off.

4. Use the key pad under the light fitting to complete desired function accordingly. Refer to Settings and Functions section below.



NOTE: This product contains a coin/button cell battery (Type CR2032) for the memory function. Replace battery when required. Refer to Battery Tips and Warnings section for more information.

NOTE: When adjusting the angle of the head, do not rotate more than 180° as this may damage the internal wires. When adjusting the height of the head, do not adjust more than 90° as this may damage the internal wires.

Setting and Functions

Display screen

Key pad under the fitting

V	DOWN key
^	UP key
S	SET key
M	MODE key

Temperature unit setting:

Under normal mode, press DOWN key to change between Celsius & Fahrenheit.

Date and Time setting:

- a. Under normal mode, press SET key enter Date / Time setting mode. Press SET key again to enter the next setting. The sequence of the settings is as follows: Hour-> Minute-> Year-> Month-> Date-> Back;
- b. Press UP and DOWN key to vary accordingly;
- c. Under setting mode, if there is no operation within 60 seconds or the MODE key is pressed, it will return back to the normal mode.

Alarm & Snooze function setting:

- d. Under normal mode, press MODE key enter alarm mode;
- e. Under alarm mode, press SET key to enter Alarm / Snooze setting. Press SET key again to enter the next setting. The sequence of setting is as follows: Hour-> Minute-> Snooze time (0-60 Minutes)-> Alarm Music-> Back
- f. Press UP and DOWN key to vary accordingly;
- g. Under alarm mode, press UP and DOWN key to switch on/off of the alarm and snooze function. The sequence is as follows: Alarm function ON-> Snooze function ON-> Alarm & Snooze function both OFF;

- h. When the set time of the alarm is reached, the alarm will last 1 minute then snooze according to your setting;
- i. When snooze time is reached, alarm will ring again, press SET key or any buttons to stop the alarm.

Battery Tips and Warnings

- **WARNING** – KEEP BATTERIES OUT OF REACH OF CHILDREN.
- **CAUTION** – Do not ingest battery—Chemical burn hazard.
- If the coin/button cell battery is swallowed, it can cause severe internal burns in just 2 hours and can lead to death due to chemical burns and potential perforation of the oesophagus.
- If you think batteries might have been swallowed or placed inside any part of the body, seek immediate medical attention.
- If you suspect your child has swallowed or inserted a button battery, immediately call the 24-hour Poisons Information Centre on **13 11 26** for fast, expert advice.
- Regularly check the product and make sure the battery box lid is correctly secured. If the battery compartment does not close securely, stop using the product and keep it away from children.
- If the battery box lid has been cracked or damaged, do not continue to use this product.
- Dispose of used batteries immediately and safely (so they cannot be retrieved by children). Flat batteries can still be dangerous.
- Keep new and used batteries away from children.
- Exhausted batteries are to be removed from the product.
- Batteries shall only be installed or replaced by an adult. Securely tight the battery box lid after replacement.
- Do not use rechargeable batteries in this product.
- The supply terminals are not to be short-circuited.
- Ensure the batteries are inserted with the correct polarity.
- Remove batteries from the product when not in use for long periods of time.

Safety Tips

- Always ensure the power is OFF and the fitting has cooled down before performing any maintenance, cleaning or adjustment to the fitting.
- To avoid injury or damage to the fitting, ensure that power leads and screws are secure before connecting the power.
- Young children should be supervised to ensure that they do not play with the portable lamp.
- Handle the fitting and/or shade with care to avoid any damage or breakage.
- Select a suitable location away from liquids and hazards.
- Ensure that the fitting does not come in contact with corrosive chemicals, etc.
- To clean, wipe with a damp clean cloth. Never soak the fitting with water.

Specifications

SKU #	259970	259971
Model Nr.	202961N	202962N
Colour	Black	White
Rated Voltage	5V DC, 1A	
Rated Wattage	Max.6.5W (Including driver)	
LED Specs	260 Lumens, 5000K Cool White, CRI ≥ 80, 3-step dimming	
Weight	0.7kg	
Dimensions	H:510mm W:70mm L:100mm Max.	