

IZZY LED CLAMP LAMP

SKU# 259991, 259992, 259993, 259994

Rated Voltage 220-240V~ 50/60Hz

Thank you for purchasing this quality Lucci product. To ensure correct function and safety, please read and follow all instructions carefully before assembly, installation and use of the product. Please keep the instructions for future reference.

Warranty

- This luminaire is covered by a 3-year warranty from the date of purchase. Please retain the proof of purchase.
- Warranty will be void if there is any damage due to improper usage or modification of the product.
- Failure to comply with the instructions in this manual may increase the risk of damage or injury and will void the warranty.

Installation Requirements

- Select a suitable location for this luminaire:
 - The clamp is for mounting on a surface with the appropriate thickness (Min.10mm – Max.30mm).
 - Ensure it is on a flat and stable surface.
 - This product is suitable for indoor use only.
 - Do not place flammable material near or over the luminaire.
 - Ensure the luminaire is not installed in the direct line of an air vent/system.
 - If installing the luminaire in an area prone to moisture, ensure that the area is well ventilated and an appropriately rated exhaust fan is used if required. Damage or corrosion caused by moisture is not a product fault, and as such is not covered under warranty.
- Take care not to pull any electrical wires during unpacking as this may damage the connection.
- Lay out all the components on a smooth surface and make sure no components are missing before assembling. If parts are missing, return the complete product to the place of purchase for inspection or replacement.
- Check whether the luminaire has been damaged during transport. Do not operate/install any product which appears damaged in any way. Return the complete product to the place of purchase for inspection, repair or replacement.
- Do not plug into the mains power socket-outlet before or during assembly. Only do so after the portable lamp is fully assembled and ready to use for the first time.

Installation Directions

Remove all packaging material from the product and be careful not to throw away accessories that may be hidden within the packaging material. If assembly is required, place the luminaire on a smooth non-scratch surface.

1. Select a suitable location for clamping the light luminaire.

NOTE: The clamp is for mounting on a surface with the appropriate thickness (Min.10mm – Max.30mm).

2. Insert the USB cable into the power adaptor/device.

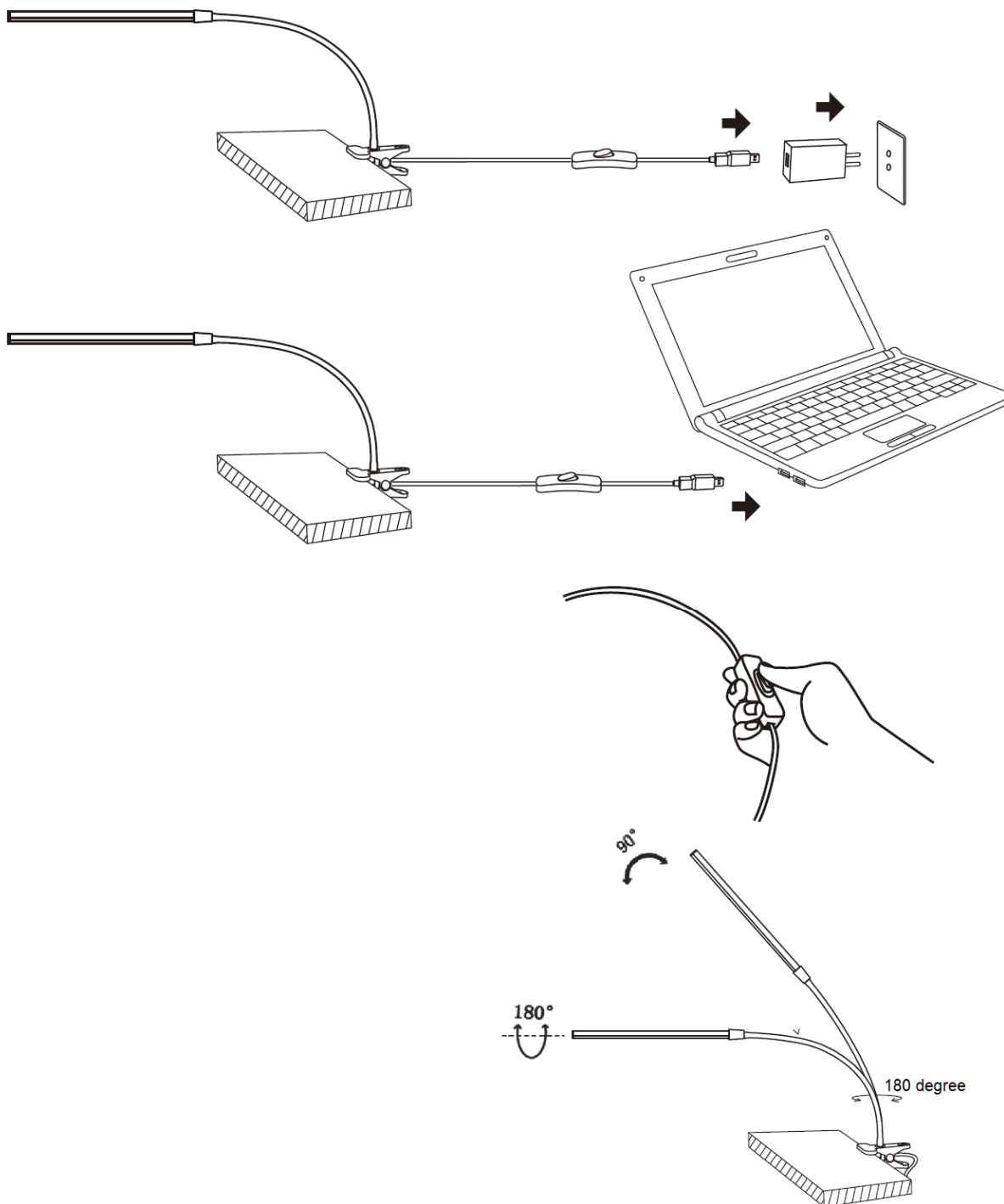
NOTE: Please ensure an appropriate power adaptor/device is used according to the rated input (5V DC, 1A) of this product.

3. Use the cord-line switch to turn the light On/Off.

4. Adjust the light head according to your need.

NOTE: When adjusting the angle of the head, do not rotate more than 180° as this may damage the internal wires.

When adjusting the height of the head, do not adjust more than 90° as this may damage the internal wires.



NOTE: When adjusting the angle of the head, do not rotate more than 180° as this may damage the internal wires. When adjusting the height of the head, do not adjust more than 90° as this may damage the internal wires.

Safety Tips

- Always ensure the power is OFF and the luminaire has cooled down before performing any maintenance, cleaning or adjustment to the luminaire.
- The external flexible cable or cord of this luminaire cannot be replaced; if the cord is damaged, the luminaire shall be destroyed.
- The light source of this luminaire is not replaceable; when the light source reaches its end of life the whole luminaire shall be replaced.
- To avoid injury or damage to the luminaire, ensure that power leads and screws are secure before connecting the power.
- Young children should be supervised to ensure that they do not play with the portable lamp.
- Handle the luminaire and/or shade with care to avoid any damage or breakage.
- Select a suitable location away from liquids and hazards.
- Ensure that the luminaire does not come in contact with corrosive chemicals, etc.
- To clean, wipe with a damp clean cloth. Never soak the luminaire with water.

Specifications

SKU #	259991	259992	259993	259994
Model Nr.	MA02-BLK	MA02-WH	MA02-PNK	MA02-BL
Colour	Black	White	Pink	Blue
Rated Voltage	5V 1A USB Input			
Rated Wattage	5W			
LED Specs	220 Lumens, 5000K Cool White, CRI ≥ 80			
Weight	0.2kg			
Dimensions	H:305mm W:75mm L:650mm			