

Paris

SKU# 260618, 260619

Rated Voltage 220-240V~ 50Hz

Thank you for purchasing this quality Lucci product. To ensure correct function and safety, please read and follow all instructions carefully before using the product. Please keep the instructions for future reference.

Warranty

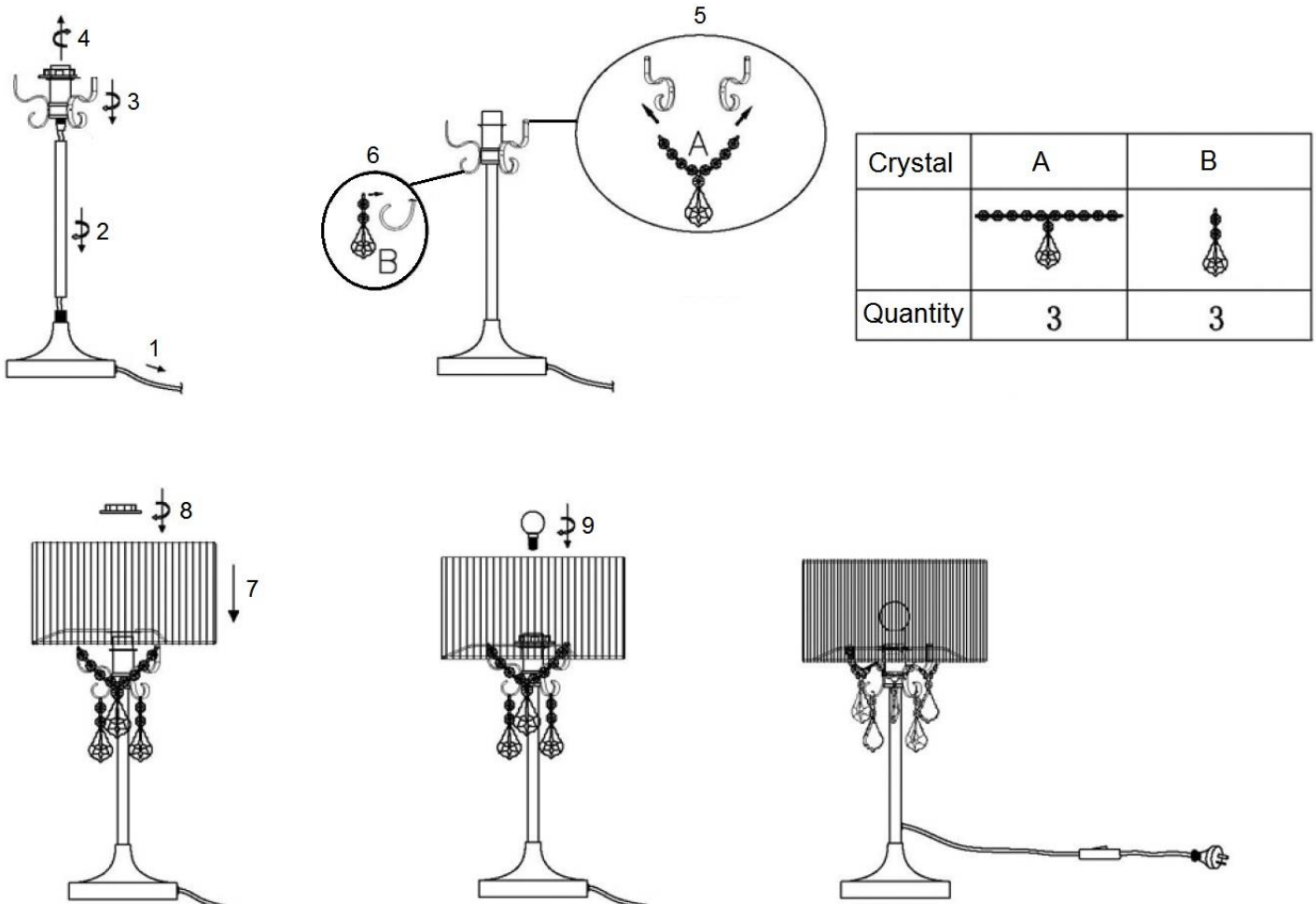
- This light fitting is covered by a 12 month warranty. Please retain proof of purchase.
- Warranty will be void if there is any damage due to improper usage or modification to the fitting.

Installation requirements

- Select a suitable location for installation;
 - This product is suitable for indoor use only.
 - Ensure the fitting is not installed next to any air vents and is not in any moist or damp areas.
 - Do not place flammable material near or over the fitting.
 - Ensure it is on a flat and stable surface.
- Do not exceed the maximum wattage rating.
- Take care not to pull any electrical wires during unpacking as this may damage the connection.
- Lay out all the components on a smooth surface and make sure there are no components missing before assembling.
- Check whether the fitting has been damaged during transport. Do not operate/install any product which appears damaged in any way. Return the complete product to the place of purchase for inspection, repair or replacement.
- Ensure power connection is off for your own safety.

Installation directions

1. Remove all packaging material from the product and shade.
Pull out the excess slack in the cord from the bottom of the base.
2. Install the rod into the base.
3. Install the lamp holder assembly onto the top of the rod.
4. Remove the lamp holder ring from the lamp holder.
5. Hang and attach crystal type A to the upper arms of the fitting.
6. Hang and attach crystal type B to the lower arms of the fitting.
7. Install the shade onto the lamp holder.
8. Secure the shade by attaching the lamp holder ring onto the lamp holder again.
9. Install a globe (not included) into the lamp holder. Do not exceed the maximum rated wattage.
10. Insert the plug into the socket outlet and ensure it is fully plugged in.
11. Turn power on at the socket outlet.
12. Use the cord line switch to turn the lamp on/off.



Safety tips

- Always ensure the power is OFF and the fitting has cooled down before performing any maintenance, cleaning, changing the globe or adjustment to the fitting.
- To avoid injury or damage to the fitting, ensure that power leads and screws are secure before connecting the power.
- Handle the fitting and shade with care to avoid any damage or breakage.
- Select a suitable location away from liquids and hazards.
- Ensure that the fitting does not come in contact with corrosive chemicals, etc.
- To clean, wipe with a damp clean cloth. Never soak the fitting with water.

Specifications

SKU #	260618	260619
Model #	LD-T82515-1/BK	LD-T82515-1/WH
Rated Voltage	220-240V~ 50Hz	
Rated Wattage	45W MAX	
Lamp Holder	SES	
Weight	1.53kg	
Dimensions	H:480mm Dia:270mm	