

FRANKIE LED PORTABLE LAMP

SKU# 269440

Rated Voltage 5V DC, 1.5A

Thank you for purchasing this quality Lucci product. To ensure correct function and safety, please read and follow all instructions carefully before assembly, installation and use of the product. Please keep the instructions for future reference.

Warranty

- This product is covered by a 12-month warranty. Please retain the proof of purchase.
- Warranty will be void if there is any damage due to improper usage or modification to the product.
- Failure to comply with the instructions in this manual may increase the risk of damage or injury and will void the warranty.

Installation requirements

- Select a suitable location for the luminaire;
 - Ensure it is on a flat and stable surface.
 - This product is suitable for both indoor and outdoor use. This luminaire is rated against water penetration to IP44 standards, which is splashing water from any direction.

NOTE: When using the product outdoor, select a place without exposing to strong wind and direct sunlight.

Option 2 (Figure B) is suitable for indoor use only.

- Do not place flammable material near or over the luminaire.
- Take care not to pull any electrical wires during unpacking as this may damage the connection.
- Lay out all the components on a smooth surface and make sure no components are missing before assembling. If parts are missing, return the complete product to the place of purchase for inspection or replacement.
- Check whether the luminaire has been damaged during transport. Do not operate/install any product which appears damaged in any way. Return the complete product to the place of purchase for inspection, repair or replacement.

Operation directions

This product can either be used as a normal table lamp (Figure A – Option 1) or placed on the wall by the magnetic bracket. (Figure B – Option 2).

Option 1 (Figure A): Place the luminaire on the magnetic bracket, which is also a stand. Make sure to place the device on a horizontal and stable surface.

Option 2 (Figure B): Installation of the magnetic bracket on the wall.

NOTE: Option 2 is only suitable for indoor condition. The magnetic bracket MUST ONLY BE installed indoor since the magnetic contact is not designed for the outdoor windy condition.

1. Use the mounting bracket as a template to mark the position of the holes onto the wall.
2. Drill holes into the wall and place the plastic anchors into the holes.
3. Secure the mounting bracket onto the wall with screws and anchors provided. Ensure the screws and anchors used are suitable for the mounting surface and the surrounding environment.
4. Place the luminaire onto the wall bracket; the strong magnetic contact secures it.

NOTE: There is a VHB ‘3M’ adhesive tape provided in case the surface is not suitable for drilling. Ensure the surface is smooth, dry and clean before applying the tape to the bottom of the bracket. Ensure your location first as the tape has very high bonding ability which might not be easily removed.

Operation:

1. Press the dimmer switch to activate the luminaire. The luminaire will reach 25% of its maximum brightness.
2. Press the dimmer switch the second time; the luminaire will reach 50% of its maximum brightness.
3. Press the dimmer switch the third time; the luminaire will reach 100% of its maximum brightness.
4. Press the dimmer switch again, and the luminaire will turn off.

NOTE: DO NOT operate the dimmer switch with only one hand when the luminaire is placed on the wall. Take the luminaire off the bracket first or use the other hand to hold the luminaire while making the switch.

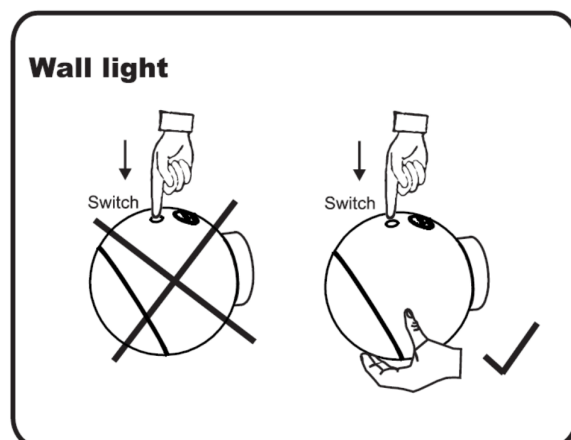
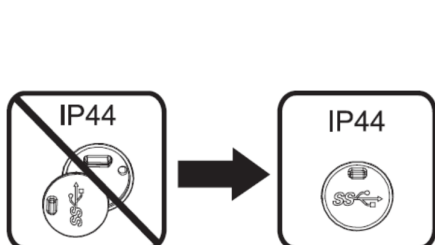
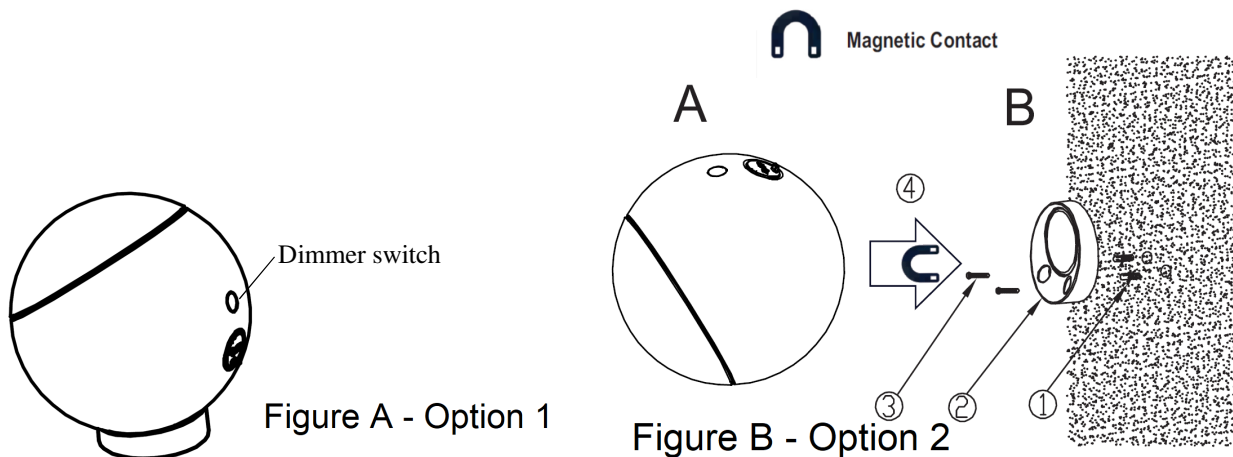
Batteries and charging:

NOTE: The luminaire includes a re-chargeable Li-Battery.

To charge the luminaire, plug the provided USB cable into the charging port and connect the USB cable to a power adaptor. The charging indicator will be red when charging and will be green when fully charged.

NOTE: Please ensure an appropriate power adaptor is used for charging according to the rated input (5V DC, 1.5A) of this luminaire.

NOTE: When the product is used outdoor, it must NOT be charged, and the USB charging port must be covered.



Safety tips

- Always ensure the power is OFF and the luminaire has cooled down before performing any maintenance, cleaning or adjustment to the luminaire.
- To avoid injury or damage to the luminaire, ensure that the power lead is secure before connecting the power.
- The luminaire is not a toy. Young children should be supervised to ensure that they do not play with the luminaire.
- The luminaire shall be placed/installed out of reach from young children.
- The luminaire includes a built-in Li-ion battery. The battery of this luminaire is not replaceable; when the battery reaches its end of life, the whole luminaire shall be replaced. Contact your local council to safely dispose of equipment with built-in battery.
- Handle the luminaire and shade with care to avoid any damage or breakage.
- Select a suitable location away from direct sunlight and hazards.
- Ensure that the luminaire does not come in contact with corrosive chemicals/solvents or abrasive cleaners etc.
- To clean, wipe with a damp clean cloth. Never soak the luminaire with water.

Specifications

| | |
|------------------|---|
| SKU # | 269440 |
| Model # | 2180A |
| Colour | Sandy Black |
| Rated Wattage | 1.5W |
| Rated input | 5V DC, 1.5A |
| IP rating | IP 44 |
| Battery capacity | 2600 mAh |
| LED Specs | Max.130 lumens, 3-step dimming (25% - 50% - 100%) CCT 2700K (Warm white), CRI 80 |
| Weight | 0.3kg |
| Dimensions | Dia: 120mm |